



Stow Professional Building

## 3869 Darrow Rd.

**Property Features**      Stow, OH 44224

- Over 26,000 SF total
- 104 Parking Spaces
- Street Signage Available
- High visibility on SR-91/Darrow Road
- Easy access to SR-8

### LEASE RATES

Suite 101	754 SF	\$12.00 SF	MG
Suite 102	800 SF	\$12.00 SF	MG
Suite 104	702 SF	<b>LEASED</b>	MG
Suite 106	545 SF	\$12.00 SF	MG
Suite 109	1,714 SF	<b>LEASED</b>	MG
Suite 208	900 SF	\$17.50 SF	MG



For more information:

**Ronald Midcap II**  
+1 216 455 0900  
RMidcap@naipvc.com

MAIN LOBBY



CONFERENCE ROOM



LOWER LEVEL HALL



UPPER LEVEL HALL



## COMMON AREAS



## SUITE 101

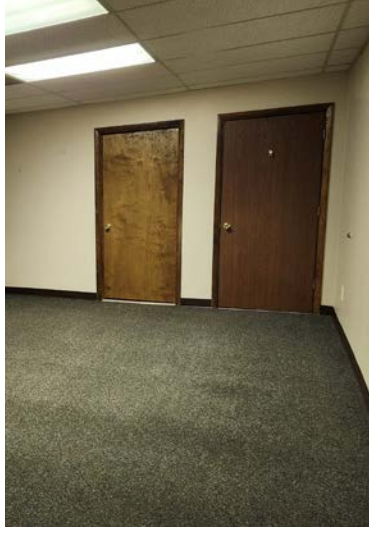


## SUITE 102



SUITE 104

**LEASED**



## SUITE 106



SUITE 109

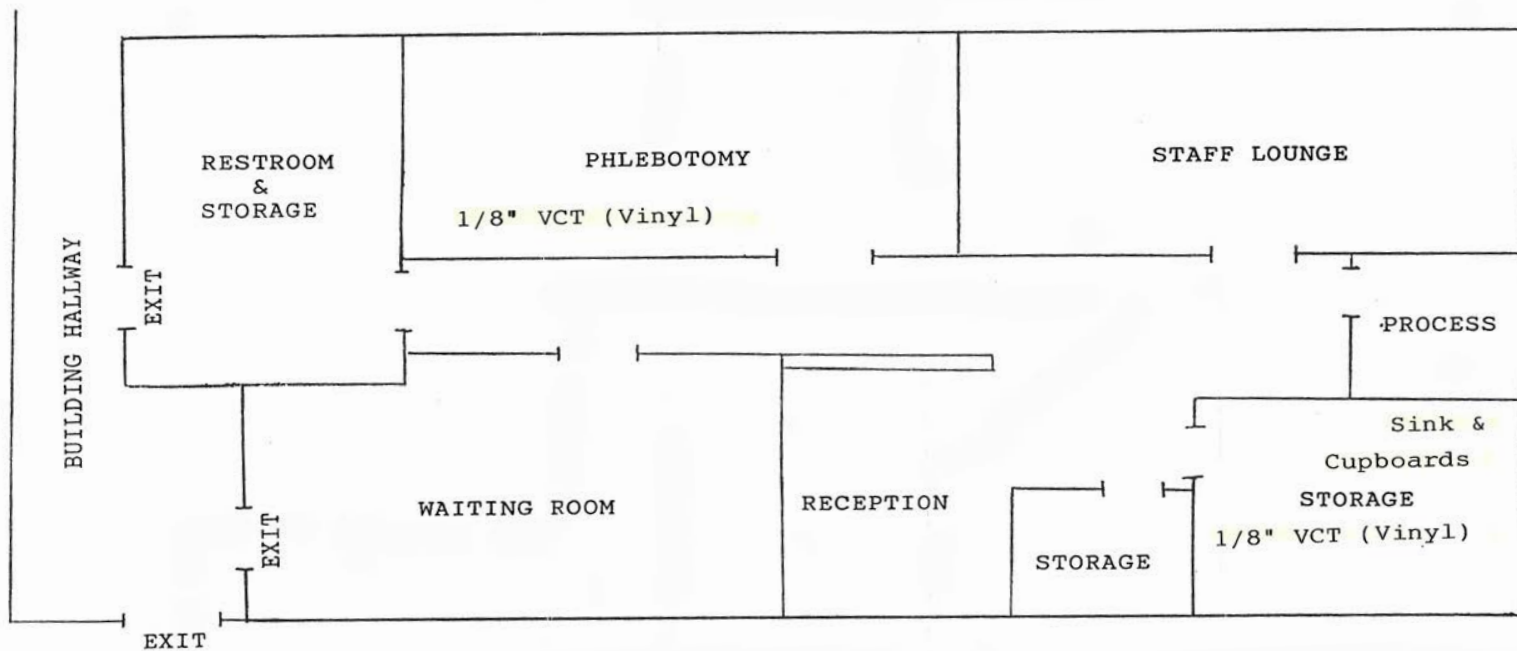
**LEASED**



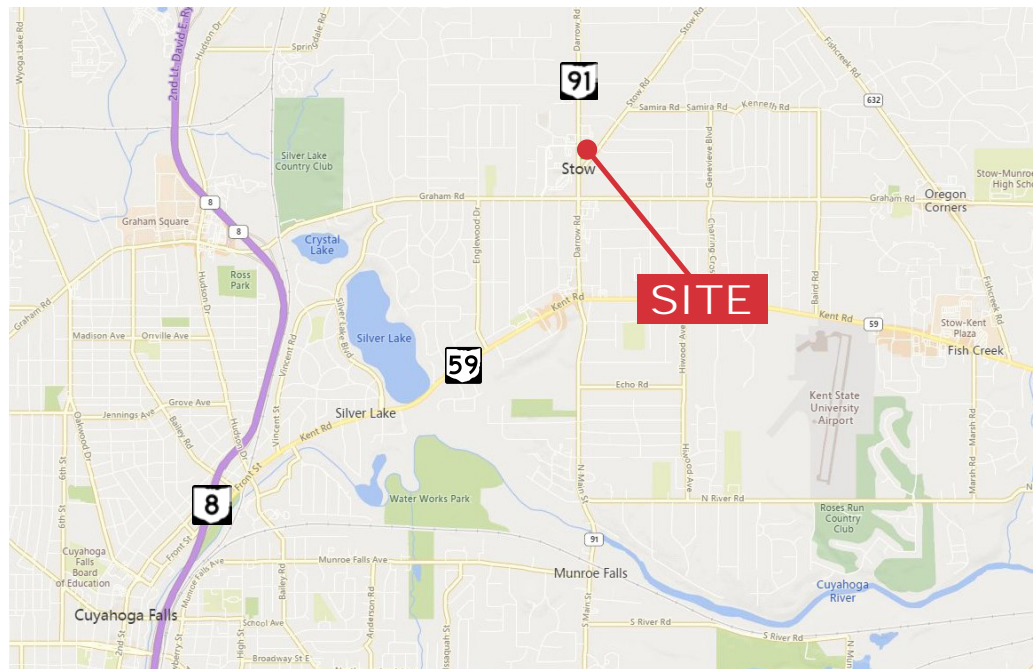
ENTRANCE



DEDICATED PARKING SPACES



## SUITE 208



Demographics	1 Mile	3 Miles	5 Miles
Population:	9,590	61,706	136,814
Median Age:	43.6	41.9	41.3
Average HH Income:	\$71,367	\$72,164	\$66,204
Traffic Count:	14,610 CPD	Darrow Rd. @ Uniondale Dr.	18,258 CPD Darrow Rd. near Graham Rd.

Located next to Key Bank on busy Darrow Rd/SR 91 in the main corridor for Stow and across from Stow City Hall and the US Post Office.

