



RICE OFFICE COMPLEX- BUILDING I

2500 NE 11TH STREET BENTONVILLE, AR 72712



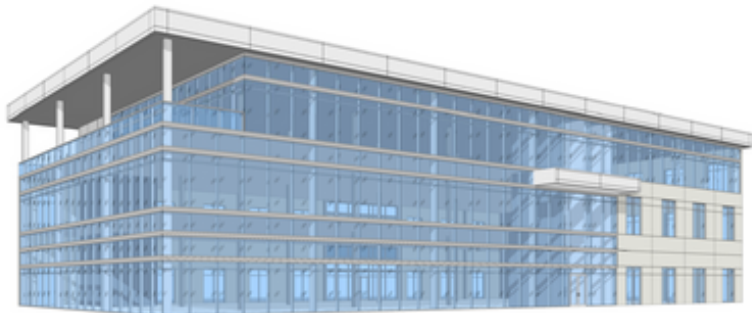
ABOUT THE SPACE

- 1st Floor- 2900 Square Feet Available
- 2nd Floor- 16,200 Square Feet Available
- 3rd Floor- 4,700 Square Feet Available

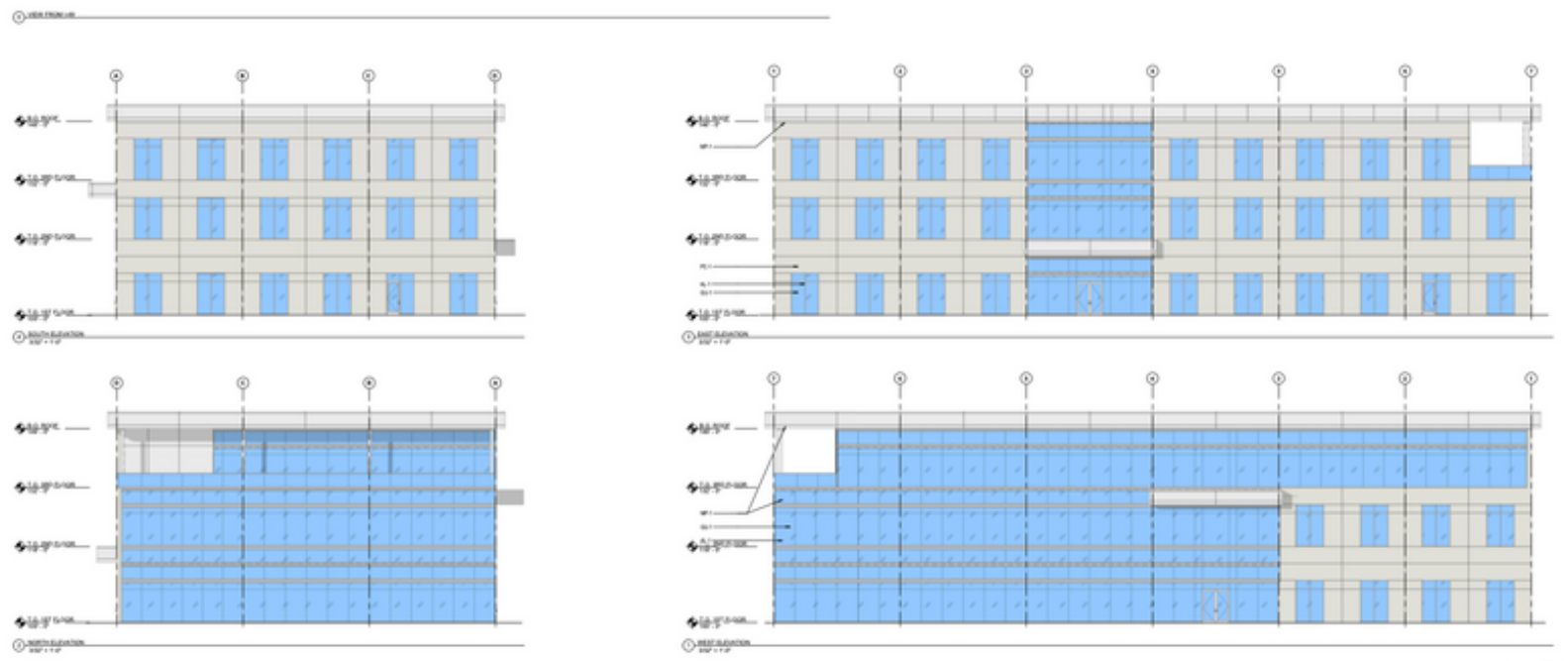
BUILDING HIGHLIGHTS

- Building Size: 48,000 SF
- Class A Property Delivered in 2020
- Mixed Use Campus with Executive Balcony Suites
- Less Than 3 Miles from Downtown Bentonville
- 1 Mile from Newly Constructed Wal-Mart Campus
- 23,869 SF Available
- Right Off Exit 88A
- High Ceilings and an Abundance of Natural Light
- 5:1000 Parking Ratio and Maximum Visibility
- Part of Master Planned Park that will have a mixed use campus feel with amenities, residential, and high tech infrastructure





FINISH LEGEND	
WALL PANEL CONCRETE/STAINLESS STEEL PANEL METAL: METAL PANEL COLOR: WHITE SW: 900 OF ARCHITECTURAL HORIZONTAL	WALL PANEL CONCRETE/STAINLESS STEEL PANEL METAL: 2000-1000-1000-1000 CONCRETE REINFORCED METAL PANEL COLOR: PAINT (SHEEN) (COLOR REFERRED DATE BY THE SHEEN) (SHEEN) SW: SHEEN (SHEEN)
ALL ALUMINUM FINISHES/CLADDING METAL: ALUMINUM EXTERIOR COLOR: WHITE SW: 900000	ALL INTERIOR WALL FINISHES/CLADDING METAL: 2000-1000-1000-1000 CONCRETE REINFORCED METAL PANEL COLOR: WHITE SW: 900000 (SHEEN) (COLOR REFERRED DATE BY THE SHEEN) (SHEEN)
WALL PANEL CONCRETE/STAINLESS STEEL PANEL METAL: ALUMINUM EXTERIOR COLOR: POLYURETHANE EXTERIOR SW: 900000	



THE ROC BUILDING 2
DATE: 02/18/2018

ELEVATION

EXTERIOR PHOTOS

2500 NE 11th Street | Bentonville, AR



INTERIOR PHOTOS

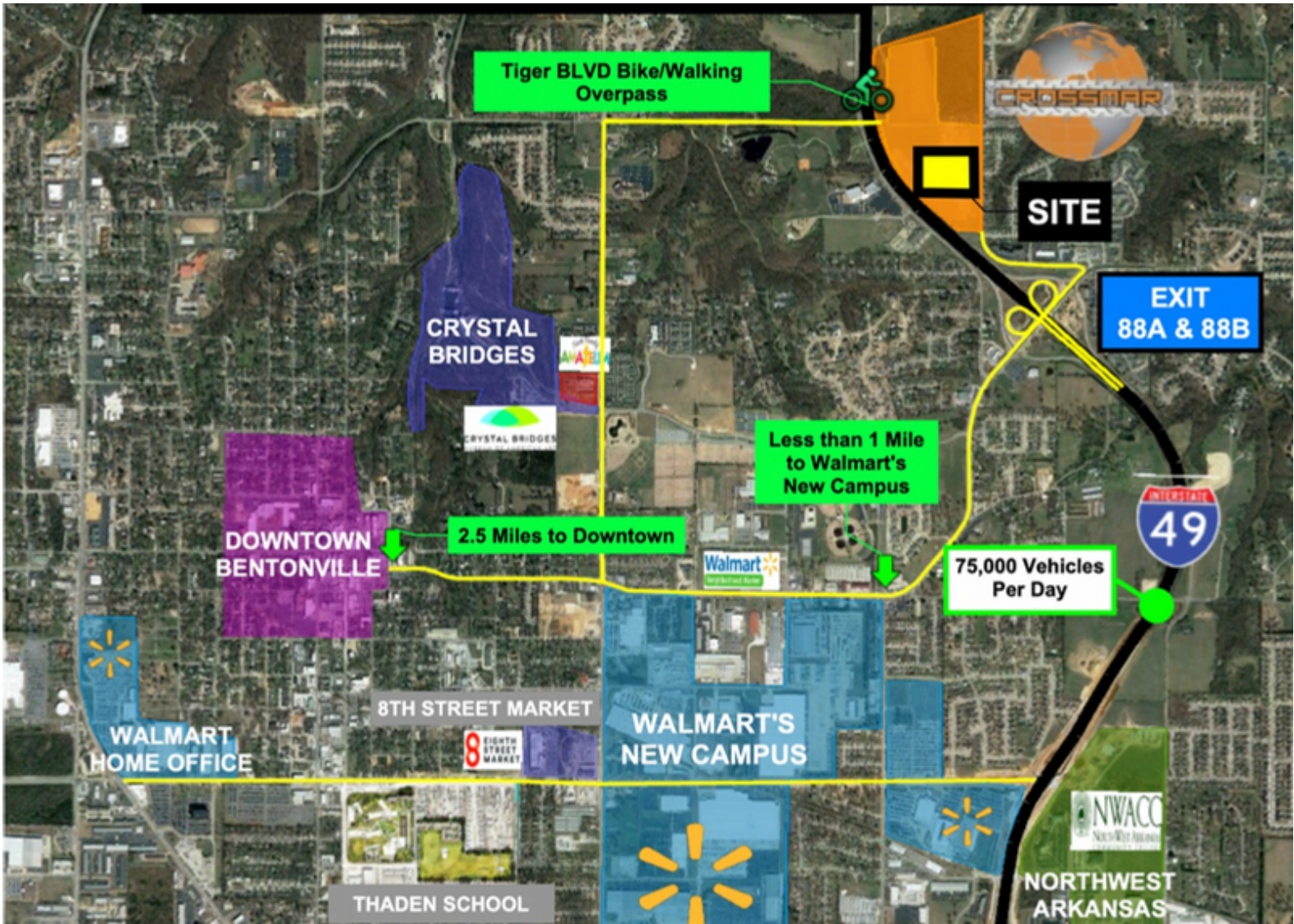
2500 NE 11th Street | Bentonville, AR



FUTURE PARK PLANS

2500 NE 11th Street | Bentonville, AR







CROSSMAR INVESTMENTS LLC

RICE OFFICE COMPLEX- BUILDING I

2500 NE 11TH STREET BENTONVILLE, AR 72712

For More Information Please Contact

Chris Crossland, CEO

cpcrossland@crossmarinvestments.com

(479) 903-0433

Matt Brasel, CFO

mbrasel@crossmarinvestments.com

(479) 876-8377

