

2,289 SF MEDICAL SPACE FOR LEASE

3155 N COLLEGE AVE



COREY FUHRMAN
BROKER | HEALTHCARE | OFFICE
479.387.4014
COREY@BENNETTCRE.COM

360° VIRTUAL TOUR

ADDRESS 3155 N COLLEGE AVE

CITY, STATE FAYETTEVILLE, AR

AVAILABLE 2,289 SF

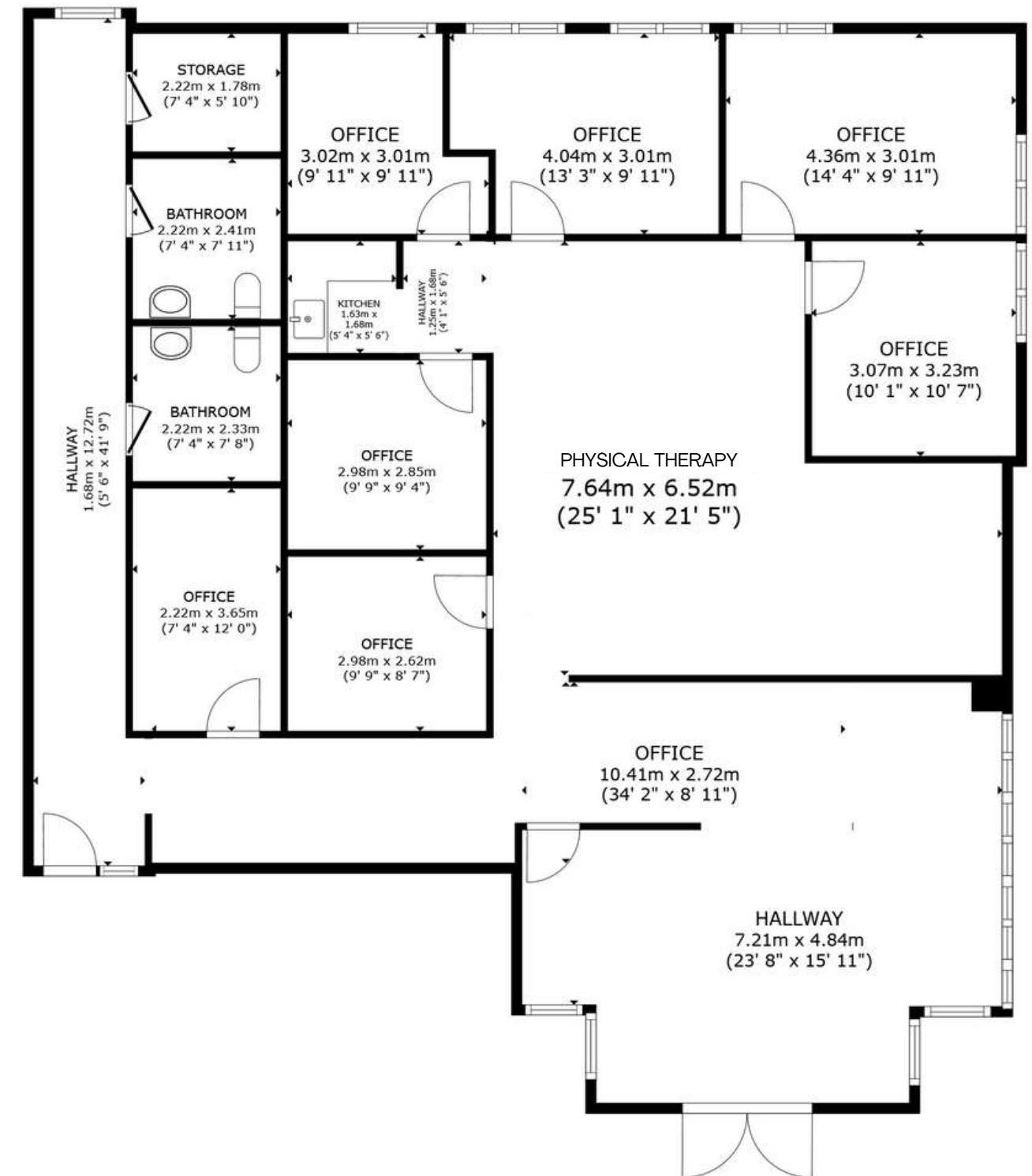
RENT \$28.00 PSF

LEASE TYPE MODIFIED GROSS

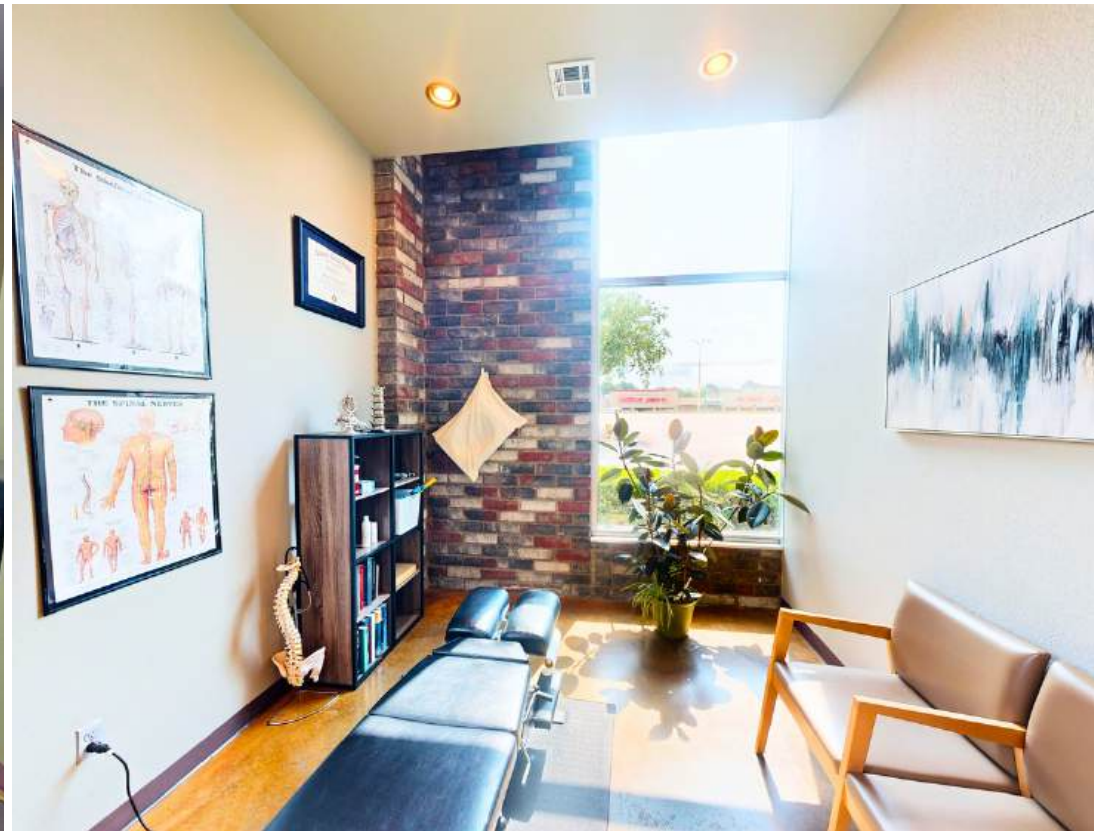
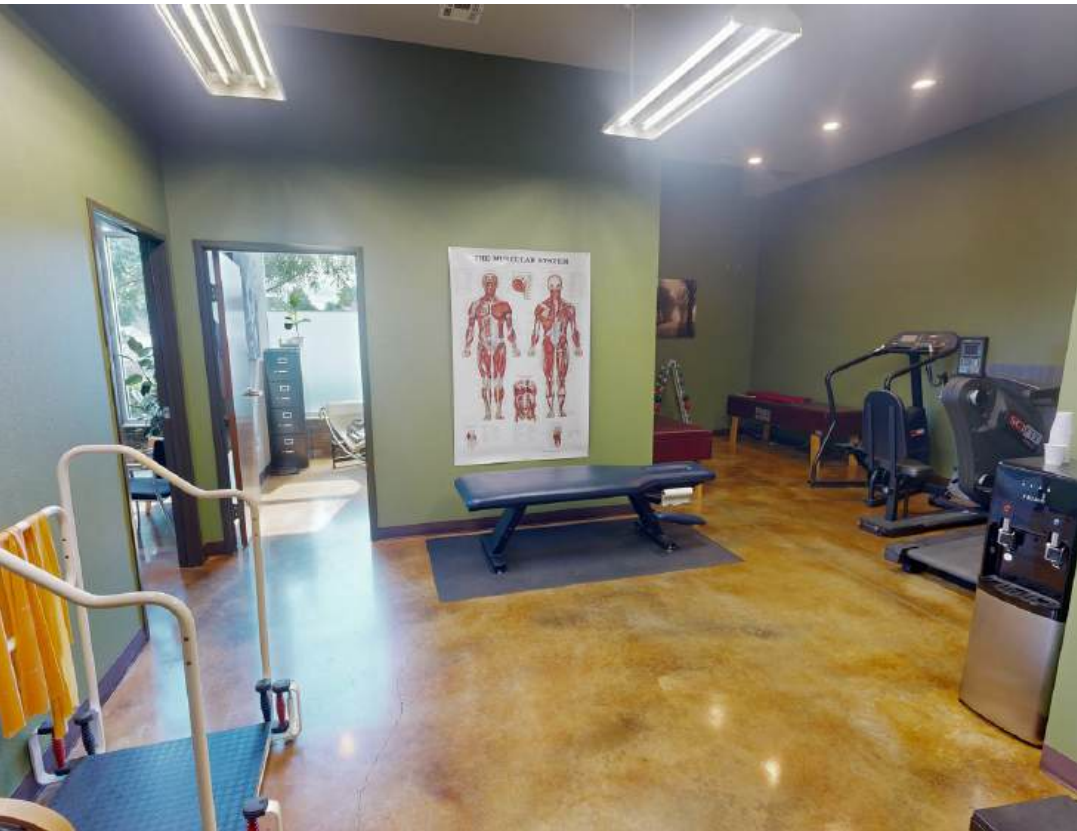
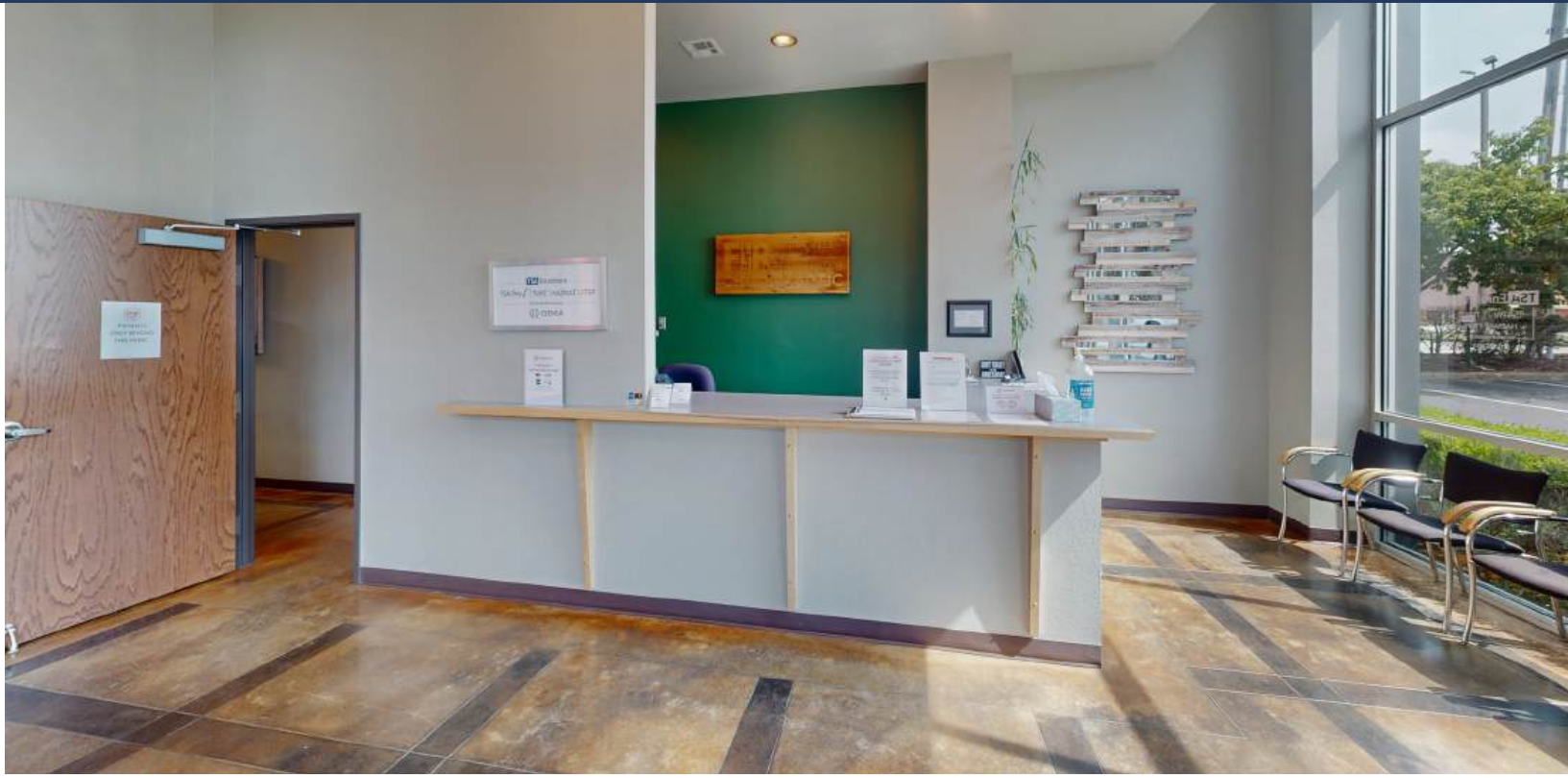
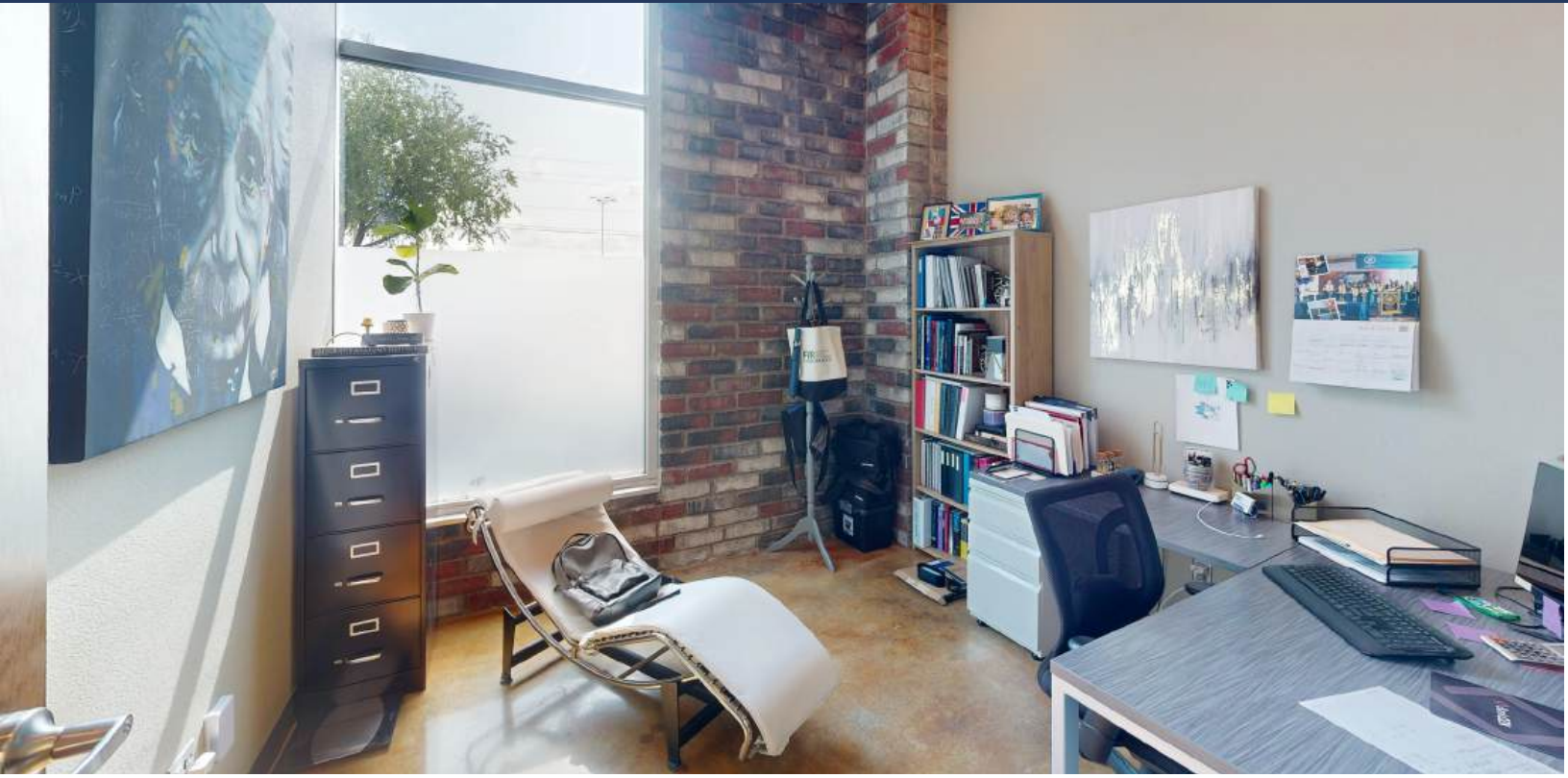
HIGHLIGHTS

- + FORMER MEDICAL SPACE
- + MOVE IN READY
- + 7 OFFICES, KITCHEN, RECEPTION AND 2 RESTROOMS
- + PLENTY OF NATURAL LIGHT
- + CONVENIENTLY LOCATED ON N. COLLEGE

360° VIRTUAL TOUR



COREY FUHRMAN
BROKER | HEALTHCARE | OFFICE
479.387.4014
COREY@BENNETTCRE.COM



COREY FUHRMAN
BROKER | HEALTHCARE | OFFICE
479.387.4014
COREY@BENNETTCRE.COM

5512 WEST WALSH LN, #201, ROGERS, AR 72758 | 479.278.4040 | BENNETTCRE.COM

3155 N COLLEGE AVE, FAYETTEVILLE, AR 72703

AERIAL VIEW



COREY FUHRMAN
BROKER | HEALTHCARE | OFFICE
479.387.4014
COREY@BENNETTCRE.COM

5512 WEST WALSH LN, #201, ROGERS, AR 72758 | 479.278.4040 | BENNETTCRE.COM

3155 N COLLEGE AVE, FAYETTEVILLE, AR 72703

NORTH AERIAL VIEW



COREY FUHRMAN
BROKER | HEALTHCARE | OFFICE
479.387.4014
COREY@BENNETTCRE.COM

5512 WEST WALSH LN, #201, ROGERS, AR 72758 | 479.278.4040 | BENNETTCRE.COM

3155 N COLLEGE AVE, FAYETTEVILLE, AR 72703

SOUTH AERIAL VIEW



COREY FUHRMAN
BROKER | HEALTHCARE | OFFICE
479.387.4014
COREY@BENNETTCRE.COM

5512 WEST WALSH LN, #201, ROGERS, AR 72758 | 479.278.4040 | BENNETTCRE.COM



SITE



COREY FUHRMAN
BROKER | HEALTHCARE | OFFICE
479.387.4014
COREY@BENNETTCRE.COM

COREY FUHRMAN

BROKER | HEALTHCARE | OFFICE



Corey brings 6+ years of experience in Commercial Real Estate Brokerage and Development across Arkansas, with expertise in various transaction types, including office, retail, investment, and healthcare. In his time in the business, he has developed a specialty in healthcare. This includes Buyer/Tenant representation, Landlord/Seller Representation, Sale-leasebacks, and

Ground-up developments. Corey was raised in DeWitt, Arkansas, and later attended Arkansas State University, graduating with a B.S. in Finance in 2017.

ACHIEVEMENTS

- Diamond Award Winner for Total Transaction Volume: 2022
- Diamond Award Winner for Total Transaction Volume: 2021
- Platinum Award Winner for Total Transaction Volume : 2020
- Arkansas State University, 2017 : B.S. in Finance, Emphasis in Mgmt

corey@bennettcre.com

479.504.2034 | bennettcre.com

CLIENTS REPRESENTED

Arkansas Chiropractic Group	Ozark Comprehensive Dentistry	STG International
Conley Injury Clinic	Nutex Health	IVX Health
Radiant Eyecare	Jonesboro Pediatric Dentistry	Neurology Associates
MRG Exams	Autism in Motion	Alleviant Health
		Miller Commerce

SIGNIFICANT TRANSACTIONS

Tenant Rep | 3,200 SF Medical Space LEASED | Fayetteville
Landlord Rep | 4,029 SF Medical Space LEASED | Rogers
Landlord & Tenant Rep | 2,880 SF Medical Space LEASED | Fayetteville
Buyer & Seller Rep | 11,853 SF Medical Sale Leaseback SOLD | Jonesboro
Buyer Rep | 3 Acres for Medical Development | SOLD | Little Rock
Tenant Rep | 2,526 SF Medical Space LEASED | Fort Smith
Tenant Rep | 15,100 SF Medical Space LEASED | Jonesboro
Buyer & Seller Rep | 14,070 SF Medical Building SOLD | Jonesboro
Buyer & Seller Rep | 7,900 SF Medical Building SOLD | Jonesboro
Landlord & Tenant Rep | 6,500 SF Medical Build-to-suit LEASED | Conway

INVOLVEMENT

Urban Land Institute (ULI), Member
International Council of Shopping Centers (ICSC), Member
ULI Young Leaders Group (YLG), Member
NWA Emerging Leaders, Member