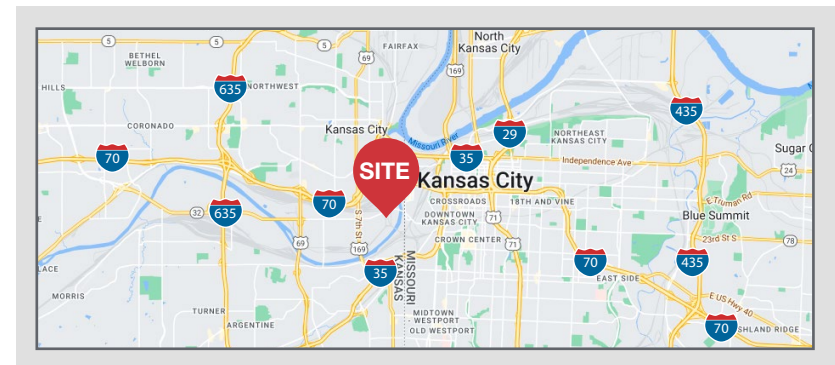


636 Adams Street

Kansas City, Kansas

Property Features

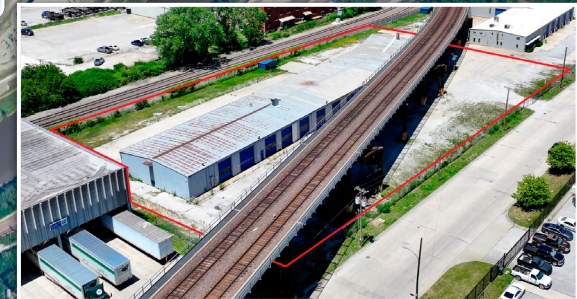
- ± 19,400 SF Truck Maintenance Facility
- 29 Drive-in doors (12'x14'), 14 drive-through bays
- 15.5' Clear height
- Approx. 2.2 acres
- Paved/gravel fenced lot
- Est. 480v 3-Phase
- Lease Rate: \$15,000.00 per month gross (\$9.28 PSF)



For more information:

Joe O'Neill, CCIM
+1 913 890 2010
joe@nai-heartland.com

Nathan Anderson, SIOR, CCIM
+1 913 890 2001
nate@nai-heartland.com



NO WARRANTY OR REPRESENTATION, EXPRESS OR IMPLIED, IS MADE AS TO THE ACCURACY OF THE INFORMATION CONTAINED HEREIN, AND THE SAME IS SUBMITTED SUBJECT TO ERRORS, OMISSIONS, CHANGE OF PRICE, RENTAL OR OTHER CONDITIONS, PRIOR SALE, LEASE OR FINANCING, OR WITHDRAWAL WITHOUT NOTICE, AND OF ANY SPECIAL LISTING CONDITIONS IMPOSED BY OUR PRINCIPALS NO WARRANTIES OR REPRESENTATIONS ARE MADE AS TO THE CONDITION OF THE PROPERTY OR ANY HAZARDS CONTAINED THEREIN ARE ANY TO BE IMPLIED.

4400 College Boulevard, Suite 170
Overland Park, Kansas 66211
+1 913 956 1000

nai-heartland.com