

Panorama Point

9200 E Mineral Avenue, Centennial, CO 80112

GREAT LOCATION IN PANORAMA PARK



PROPERTY HIGHLIGHTS

- Located in Panorama Park, home to major facilities for Comcast, ULA, Travelport, Cisco, Arrow, Centura Health and RingCentral.
- Convenient access to I-25 and Dry Creek light rail station.
- Tenant lounge and conferencing center.
- Executive covered parking.
- Beautiful mountain views.
- Roof top patio.



For leasing information please contact:

Matt Smith | 303.996.8460
msmith@premisescommercial.com

Michelle Gertzman | 720.743.6399
mgertzman@premisescommercial.com

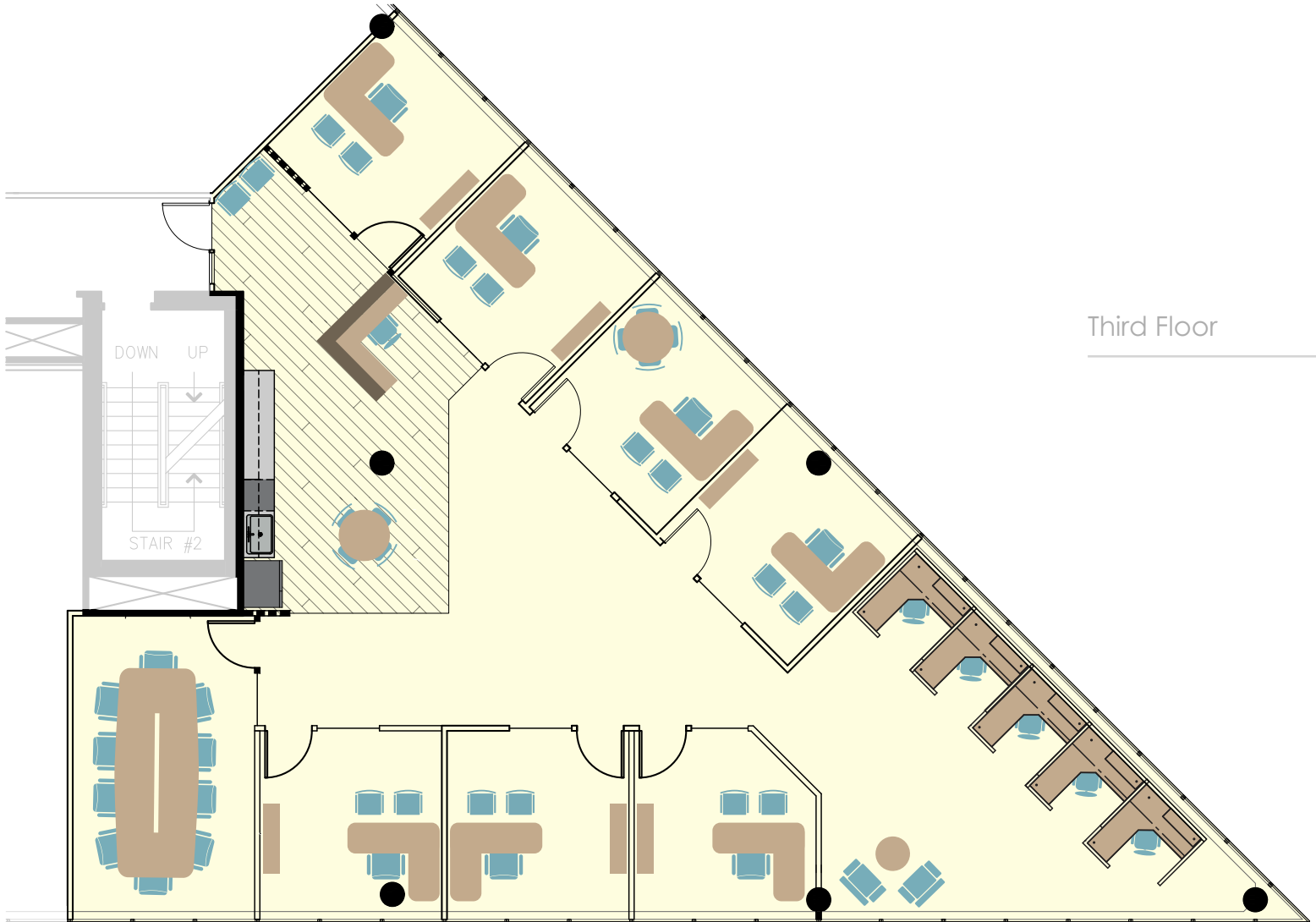
PREMISES
PREMISES COMMERCIAL REAL ESTATE LLC
WWW.PREMISESCOMMERCIAL.COM

Panorama Point

9200 E Mineral Avenue, Centennial, CO 80112

AVAILABLE SUITES

Suite 300
2,885 sf



Third Floor

(Available 10/01/2026)

WWW.PREMISESCOMMERCIAL.COM

The information contained herein, while not guaranteed, has been secured from sources we believe to be reliable. Different brokerage relationships are available which include Seller/Landlord Agency, Buyer/Tenant Agency and Transaction Broker. Premises Commercial Real Estate, LLC is acting in this capacity as Landlord's/Sublessor's Agent, unless otherwise agreed, and owes its fiduciary allegiance to Landlord/Sublessor as defined by Colorado Real Estate Commission.