



Bridge Park Center

370-390 Bridge Pky, Redwood City, CA 94065



Alex Hawkins

Sharevest Property Management
330 Primrose Rd, Suite 512, Burlingame, CA 94010
alexhawkins@thegilmartins.com
(650) 348-2020



Bridge Park Center

\$39.00 /SF/YR

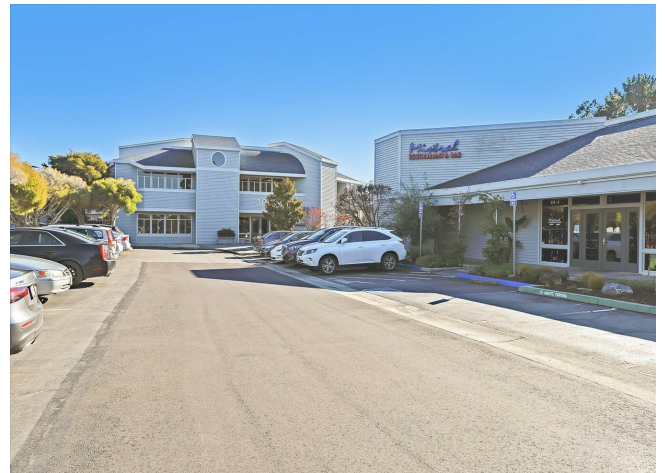
370-390 Bridge Park Center is a professional office park and retail, located on the water in Redwood Shores, conveniently close to HWY 101. It is a well-maintained mid-peninsula near ORACLE with ample parking and is easily accessible to Redwood Shores residents and office professionals.

370 Bridge Parkway can be used as an office or retail space with a shared kitchen, bathrooms, a rear entrance for loading, and ample parking. Great location for health care support, such as massage, physical therapy, chiropractor, gym, health food store, specialty goods, wine, or retail therapy.

390 is a Two Story professional office center that boasts waterfront views of the Redwood Shores Lagoon and has ample parking

390-250 is a complete suite, currently built out to have a central work area with offices along the perimeter of the space. It includes a kitchen and storage/office supply/printing room.

Minutes from the Redwood Shores Center (Bay Club, Nob Hill Foods, Starbucks, Bank of America, and Chase Bank)....



Rental Rate:	\$39.00 /SF/YR
Property Type:	Office
Building Class:	B
Rentable Building Area:	43,504 SF
Year Built:	1986
Walk Score ®:	46 (Car-Dependent)
Rental Rate Mo:	\$3.25 /SF/MO

1st Floor Ste 370-2

Space Available	2,596 SF
Rental Rate	\$39.00 /SF/YR
Date Available	Now
Service Type	Full Service
Built Out As	Professional Services
Space Type	Relet
Space Use	Office/Retail
Lease Term	1 - 5 Years

1

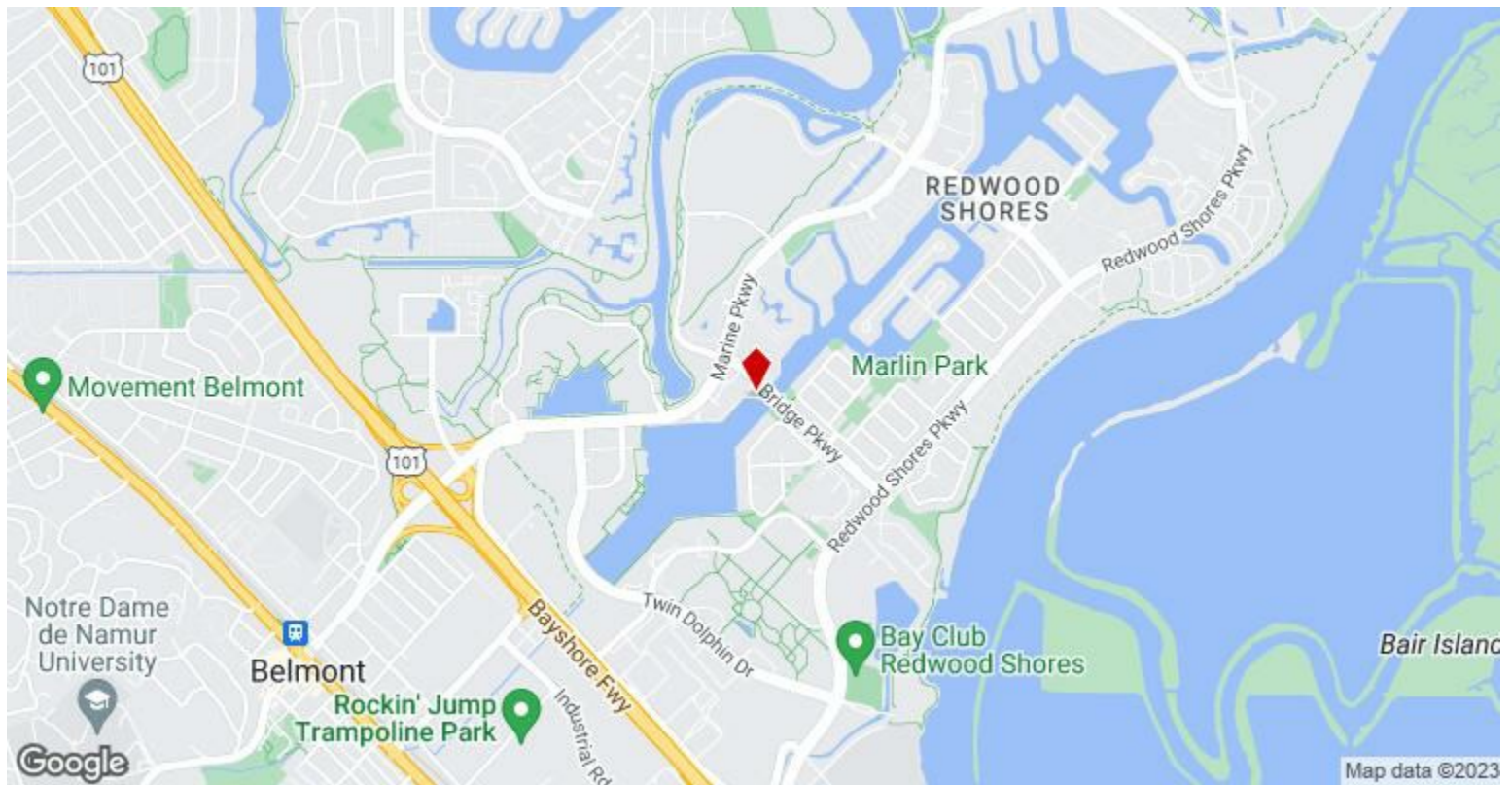
2nd Floor Ste 390-250

Space Available	2,424 SF
Rental Rate	\$39.00 /SF/YR
Date Available	Now
Service Type	Full Service
Space Type	Relet
Space Use	Office
Lease Term	1 - 5 Years

2

Major Tenant Information

Tenant	SF Occupied	Lease Expired
Johnson & Dugan	1,000	
Pollack Financial	-	
SJ Amoroso Construction Co.,Inc	11,867	
Stanzler Law Firm	-	
Tim Cronin Law Firm	2,001	



370-390 Bridge Pky, Redwood City, CA 94065

370-390 Bridge Park Center is a professional office park and retail, located on the water in Redwood Shores, conveniently close to HWY 101. It is a well-maintained mid-peninsula near ORACLE with ample parking and is easily accessible to Redwood Shores residents and office professionals.

370 Bridge Parkway can be used as an office or retail space with a shared kitchen, bathrooms, a rear entrance for loading, and ample parking. Great location for health care support, such as massage, physical therapy, chiropractor, gym, health food store, specialty goods, wine, or retail therapy.

390 is a Two Story professional office center that boasts waterfront views of the Redwood Shores Lagoon and has ample parking

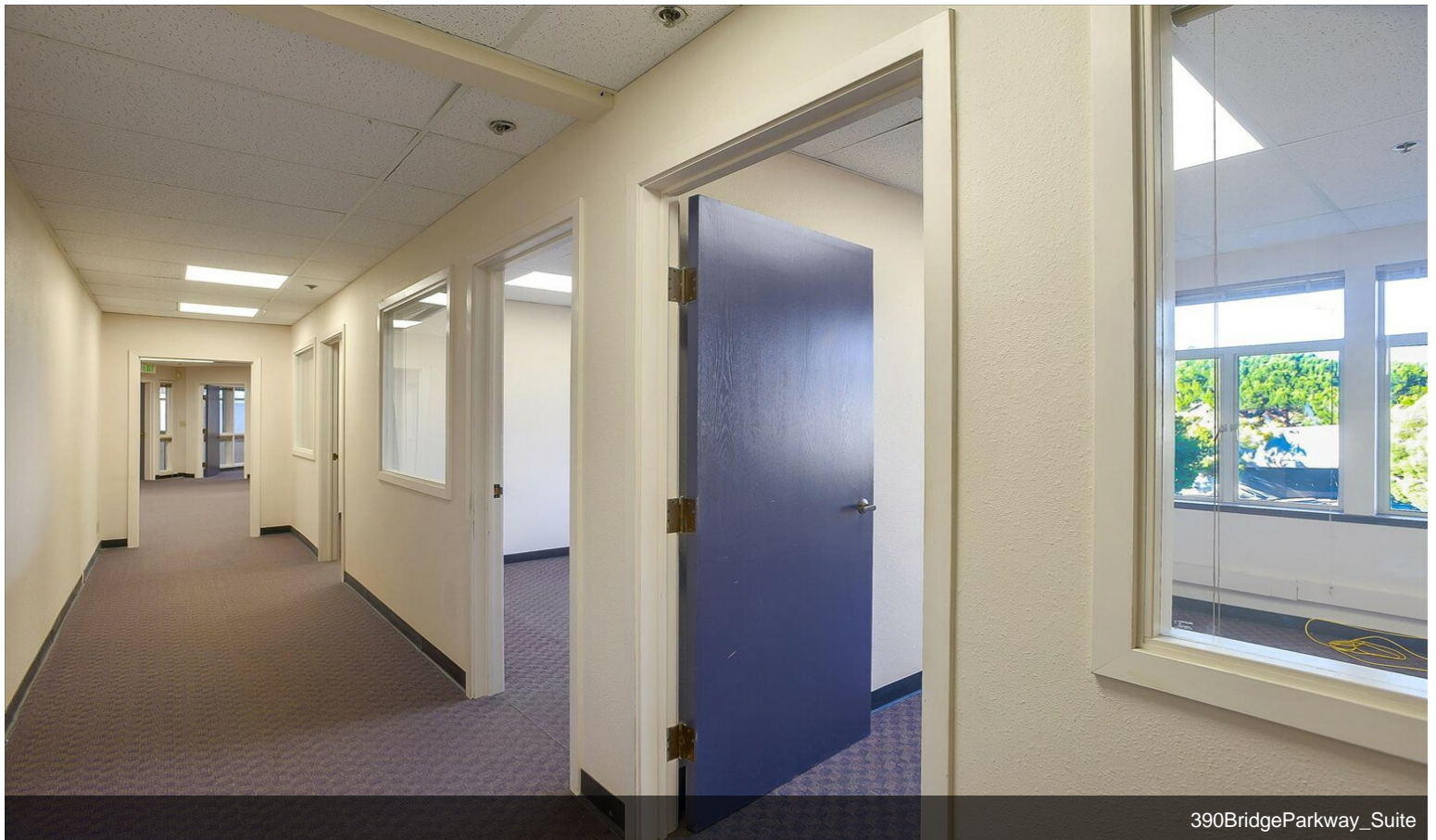
390-250 Is a complete suite, currently built out to have a central work area with offices along the perimeter of the space. It includes a kitchen and storage/office supply/printing room.

Minutes from the Redwood Shores Center (Bay Club, Nob Hill Foods, Starbucks, Bank of America, and Chase Bank).

Property Photos



390BridgeParkway_Suite



390BridgeParkway_Suite

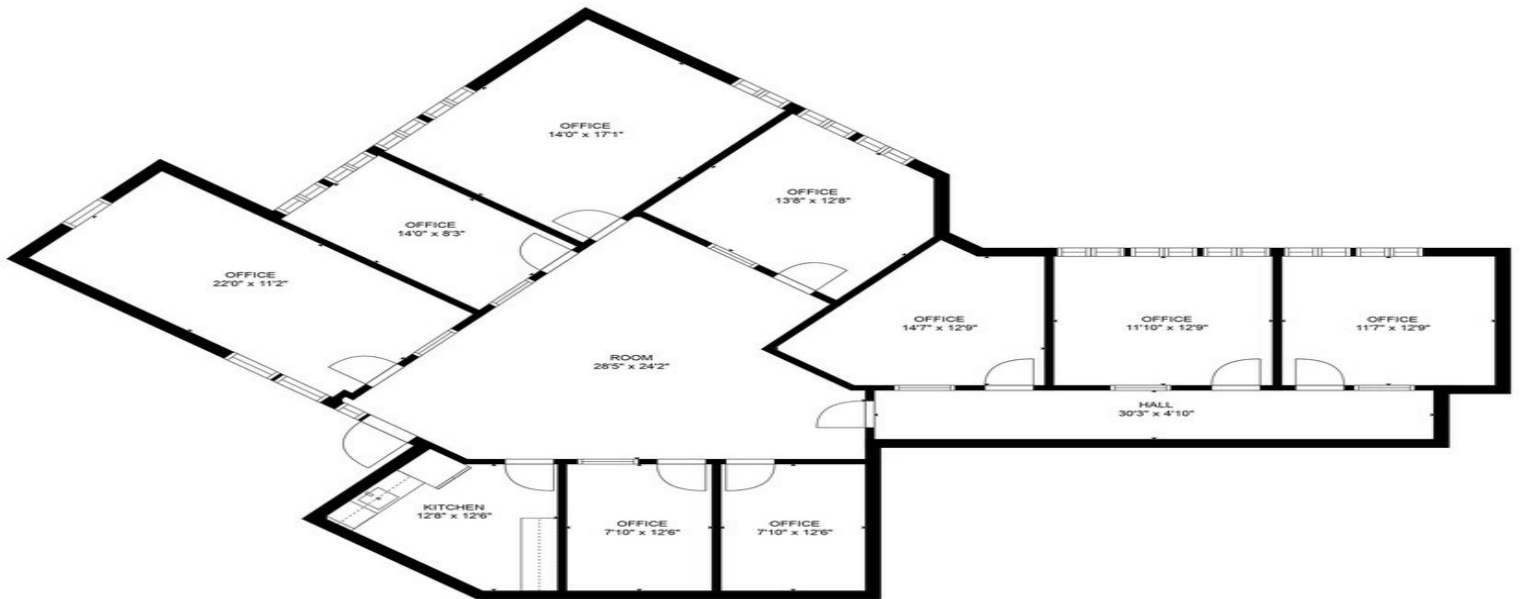
Property Photos



Property Photos

390 Bridge Parkway, Redwood Ci

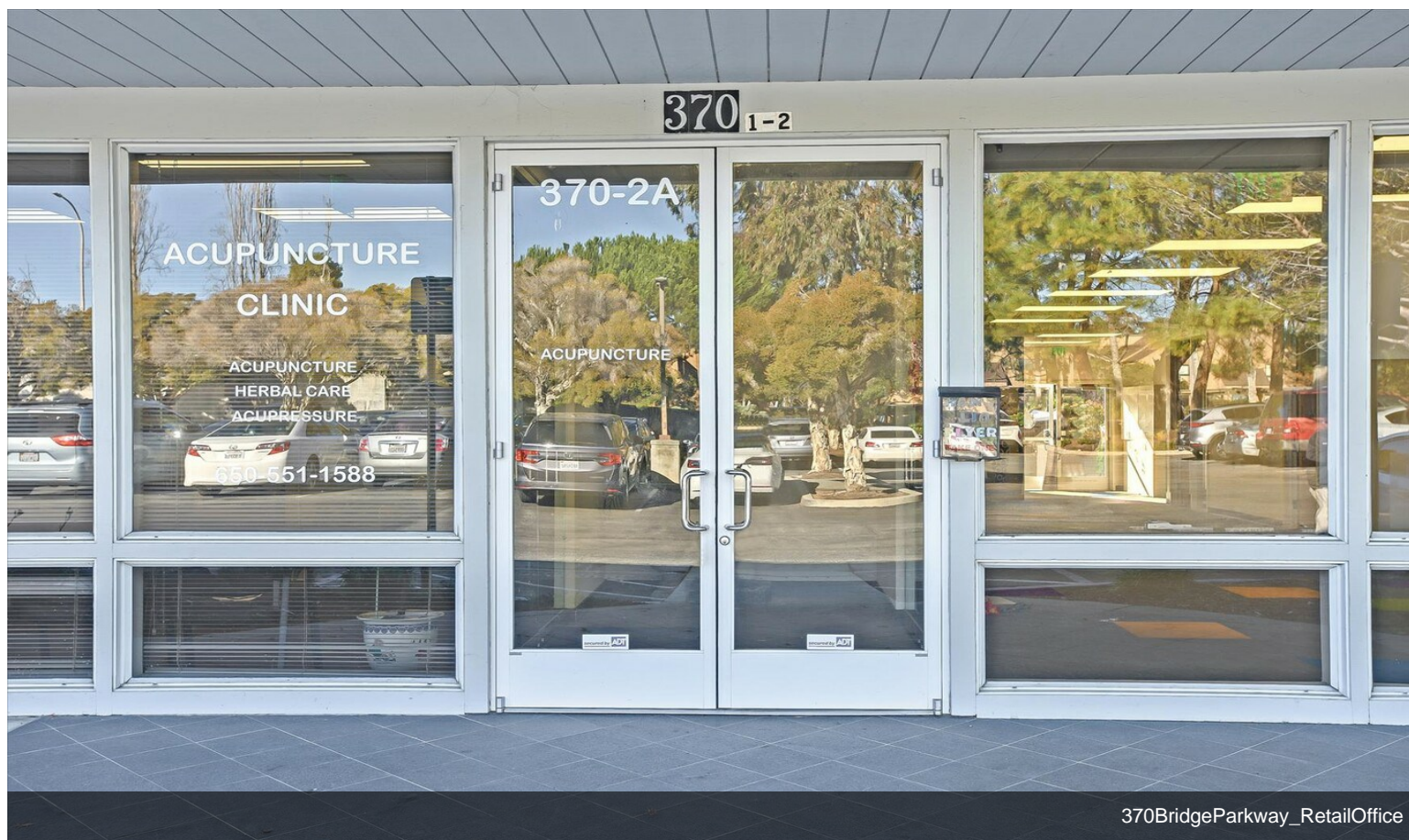
Estimated Gross Living Area: 2424 Sq Ft



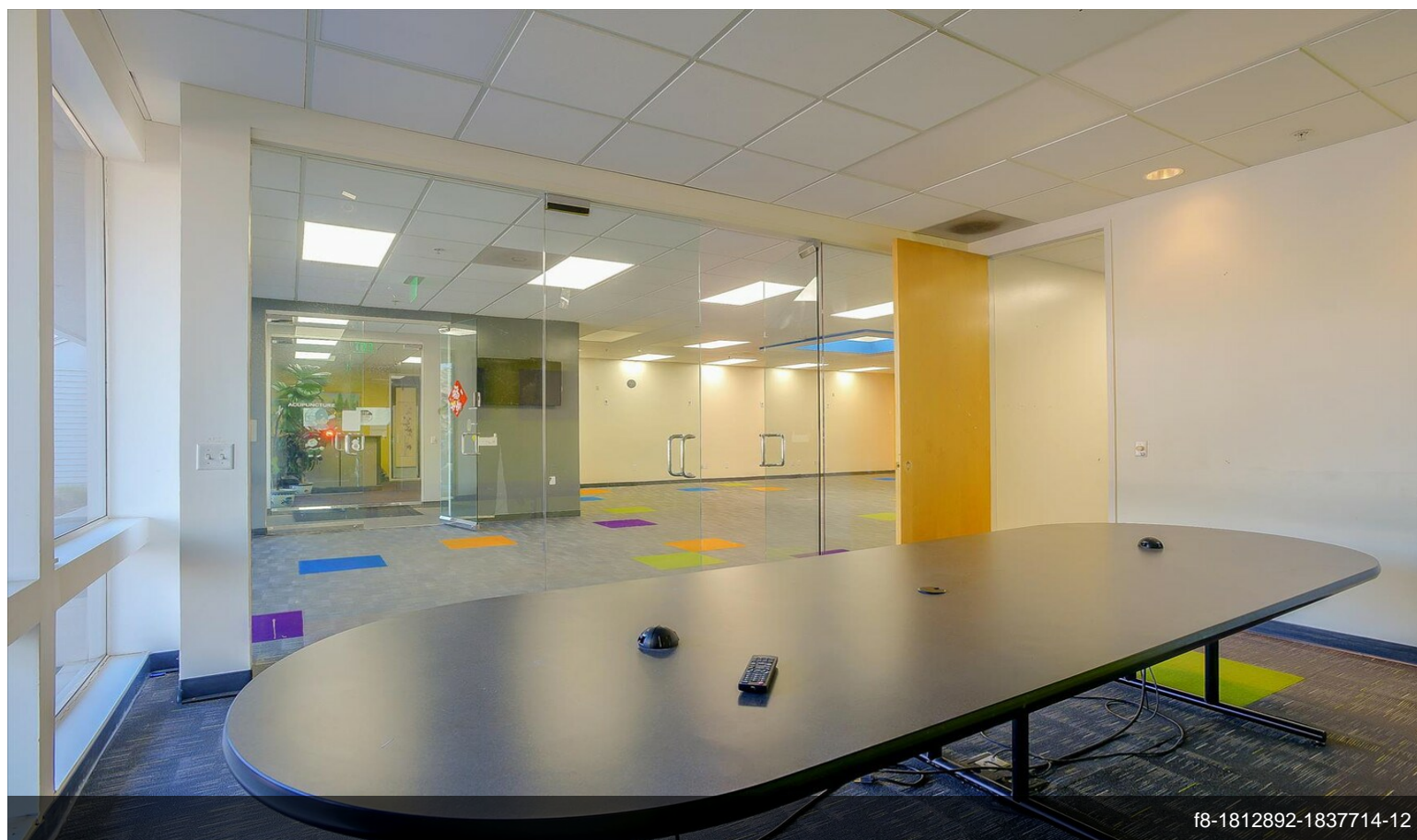
PRODUCED BY i8 REAL ESTATE MEDIA - This Floorplan Diagram demonstrates the basic layout of the home in a diagram that resembles a blueprint. This home, and it is to be used for illustrative purposes only. This diagram is not to scale, may contain inaccuracies and is not to be relied upon for any purpose you might expect from a professional appraiser or other licensed inspector. Gross Living Area information supplied 390BridgeParkway,RedwoodCity,CA94065FP



Property Photos

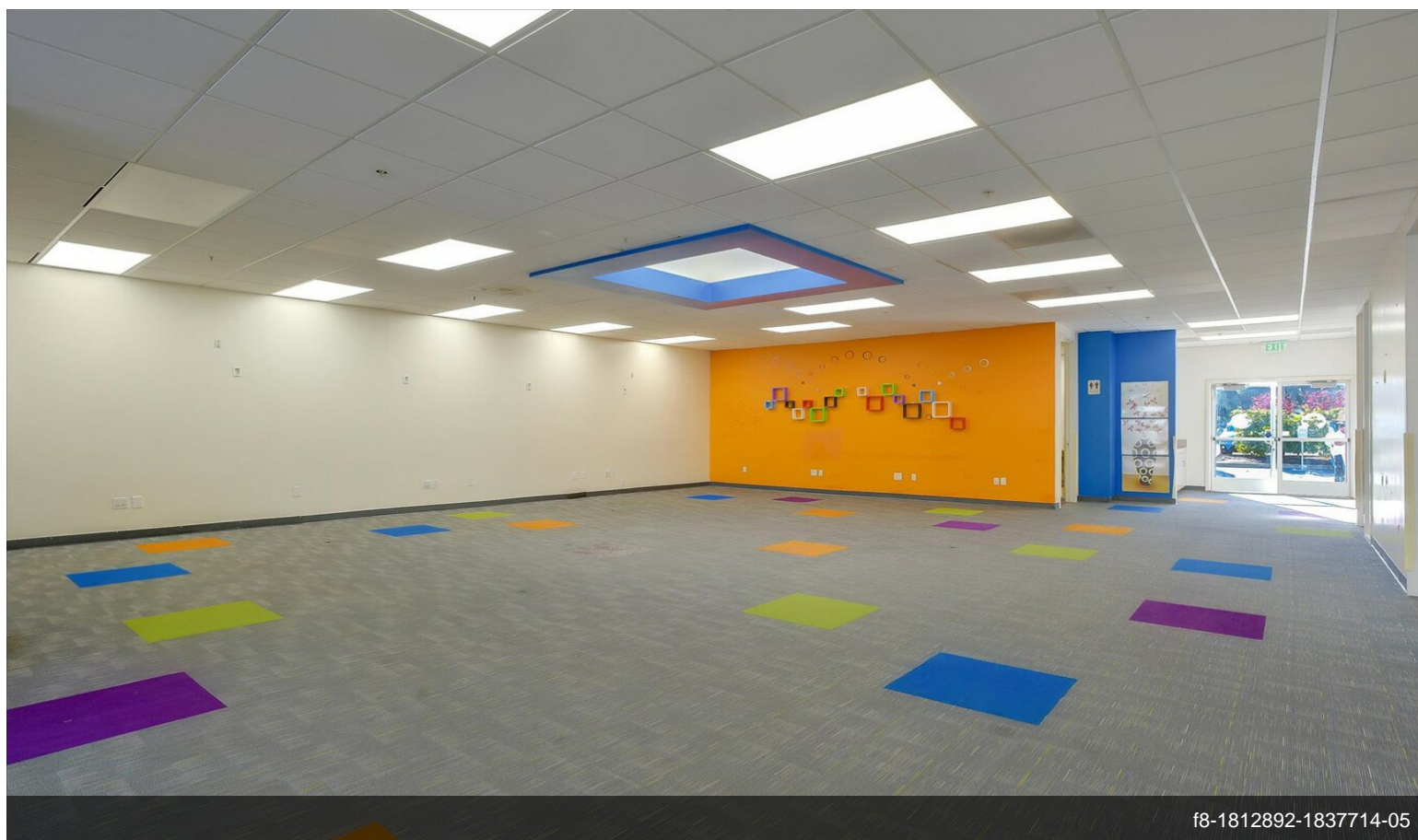
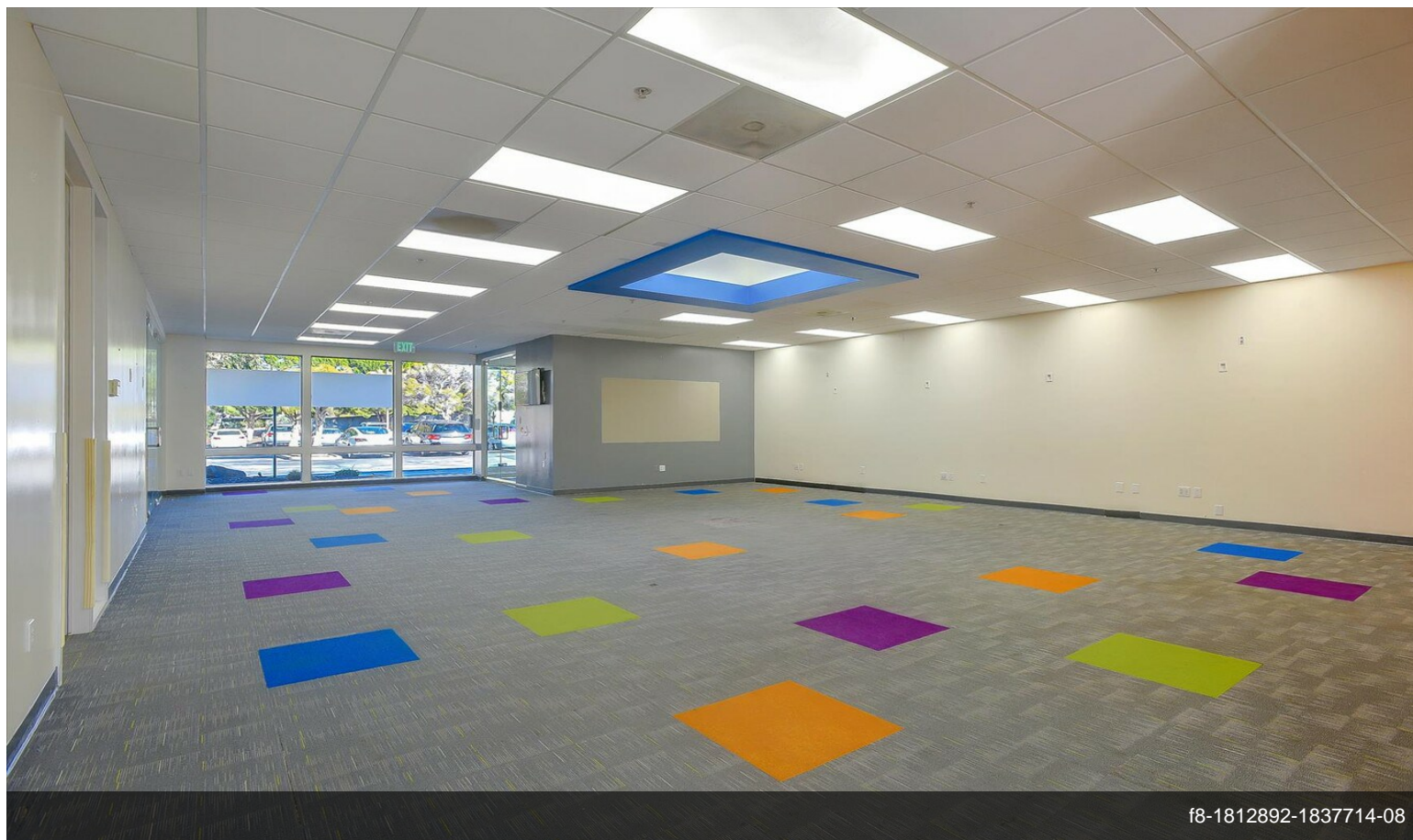


370BridgeParkway_RetailOffice

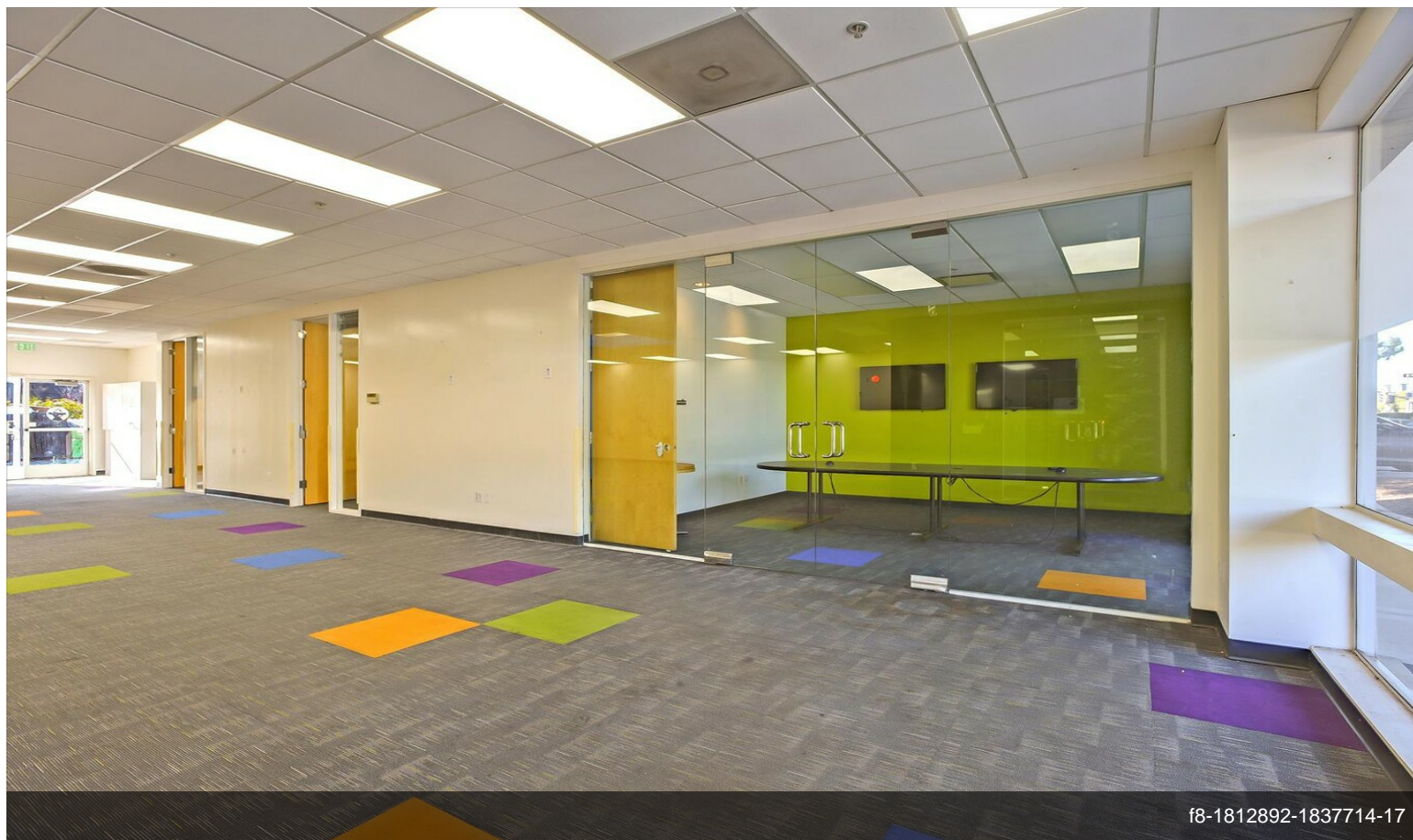


f8-1812892-1837714-12

Property Photos



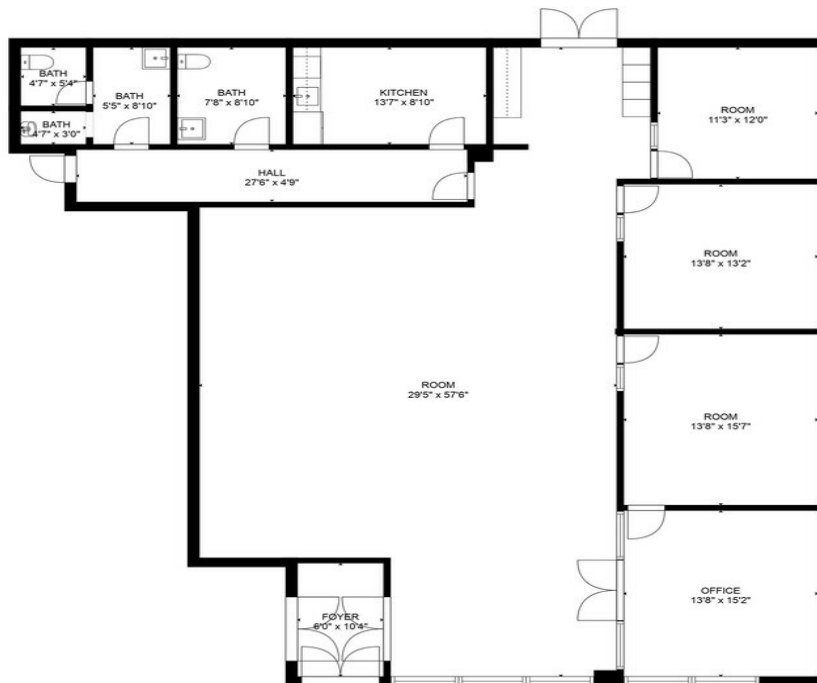
Property Photos



Property Photos

370 Bridge Parkway, Unit 4, Redwood City, CA 94065

Estimated Gross Living Area: 2,000 Sq Ft



PRODUCED BY i8 REAL ESTATE MEDIA - This Floorplan Diagram demonstrates the basic layout of the home in a diagram that resembles a blueprint. This diagram is not derived from actual measurements of the home, and it is to be used for illustrative purposes only. This diagram is not to scale, may contain inaccuracies and is not to be relied upon for any purpose that requires the precise measurement of the home that one might expect from a professional appraiser or other licensed inspector. Gross Living Area information supplied by Cubicasa. Potential buyers should investigate [370 Bridge Parkway, Unit 4, Redwood City, CA 94065](#)