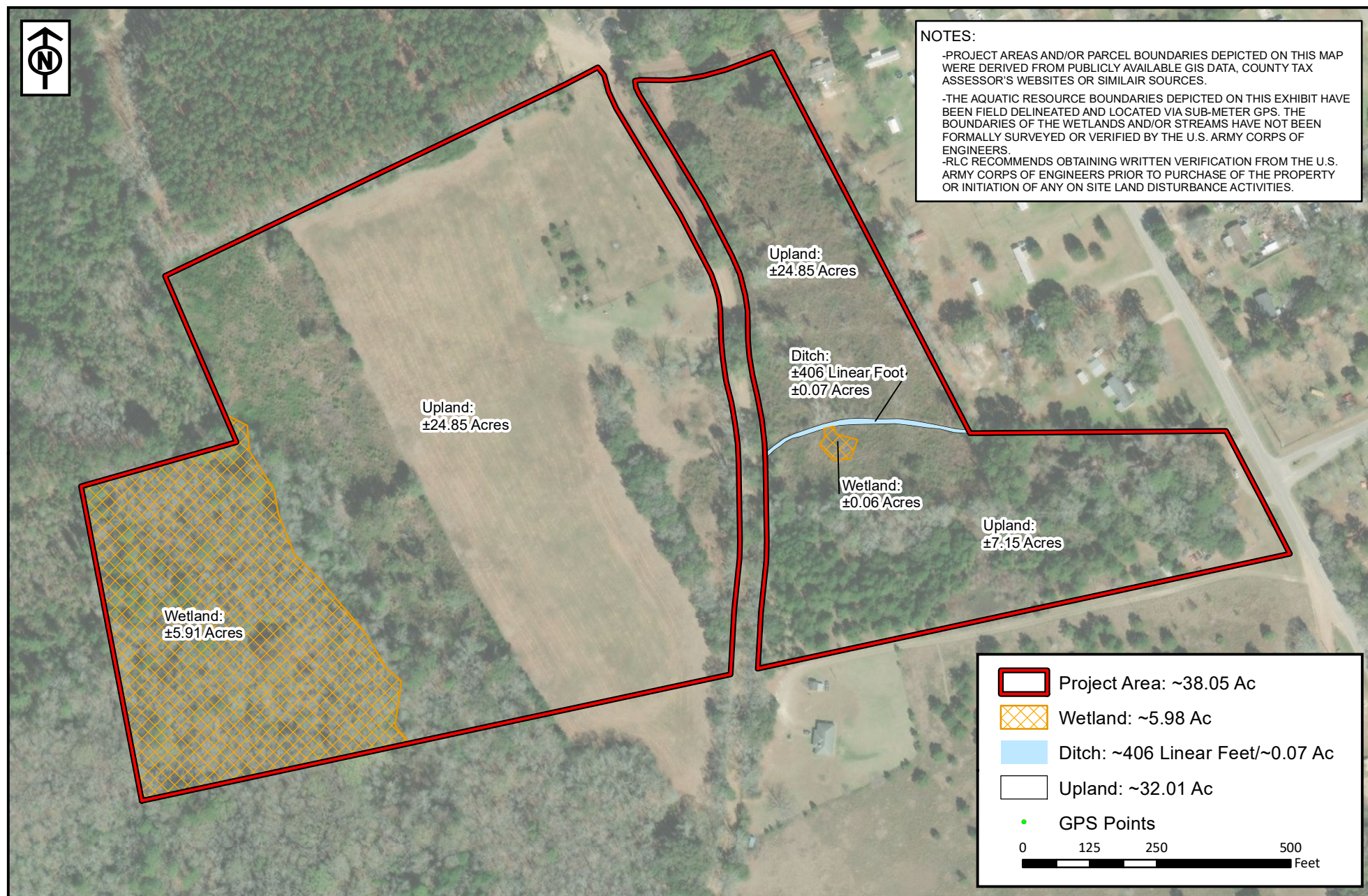


**NOTES:**

-PROJECT AREAS AND/OR PARCEL BOUNDARIES DEPICTED ON THIS MAP WERE DERIVED FROM PUBLICLY AVAILABLE GIS DATA, COUNTY TAX ASSESSOR'S WEBSITES OR SIMILAR SOURCES.

-THE AQUATIC RESOURCE BOUNDARIES DEPICTED ON THIS EXHIBIT HAVE BEEN FIELD DELINEATED AND LOCATED VIA SUB-METER GPS. THE BOUNDARIES OF THE WETLANDS AND/OR STREAMS HAVE NOT BEEN FORMALLY SURVEYED OR VERIFIED BY THE U.S. ARMY CORPS OF ENGINEERS.

-RLC RECOMMENDS OBTAINING WRITTEN VERIFICATION FROM THE U.S. ARMY CORPS OF ENGINEERS PRIOR TO PURCHASE OF THE PROPERTY OR INITIATION OF ANY ON SITE LAND DISTURBANCE ACTIVITIES.



RLC Project No.: 23-277
Figure No.: 1.1
Prepared By: HP
Sketch Date: 8/22/2023
Map Scale : 1 inch = 250 feet

Hall Tract
Bulloch County, Georgia

**Aquatic Resource
Delineation Exhibit**
Prepared For: Pam Chance



**RESOURCE+LAND
CONSULTANTS**

41 Park of Commerce Way, Ste 101
Savannah, GA 31405
tel 912.443.5896 fax 912.443.5898