

PIEDMONT PROPERTIES
CORFAC INTERNATIONAL

WAREHOUSE FOR LEASE

±14,000 SF - 220,000 SF | ±4.70 AC | **OUTDOOR STORAGE**



2920 N TRYON ST, CHARLOTTE, NC 28206

BLAKE OSBORN
704.375.1159

blake@piedmontproperties.com

SCOTT HENSLEY, CCIM, SIOR
704.375.1164

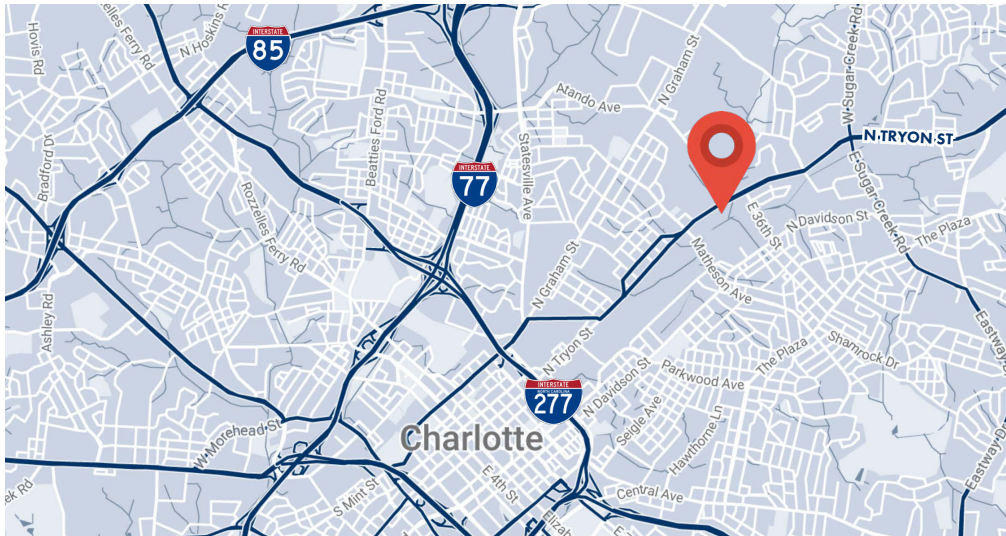
shensley@piedmontproperties.com

LESTER OSBORN, CCIM, SIOR
704.375.1131

losborn@piedmontproperties.com

PROPERTY HIGHLIGHTS

2920 N TRYON ST | CHARLOTTE, NC 28206



MAIN LEVEL

SQUARE FOOTAGE ±48,560 SF total
Suite A: ±34,200 SF
Suite B: ±14,360 SF

LOADING 2 Dock high doors
2 Grade level doors

CLEAR HEIGHT 18'

LOWER LEVEL

SQUARE FOOTAGE ±103,115 SF total
Suite C: ±88,755 SF
Suite D: ±14,360 SF

LOADING 2 Dock high doors

CLEAR HEIGHT 12'

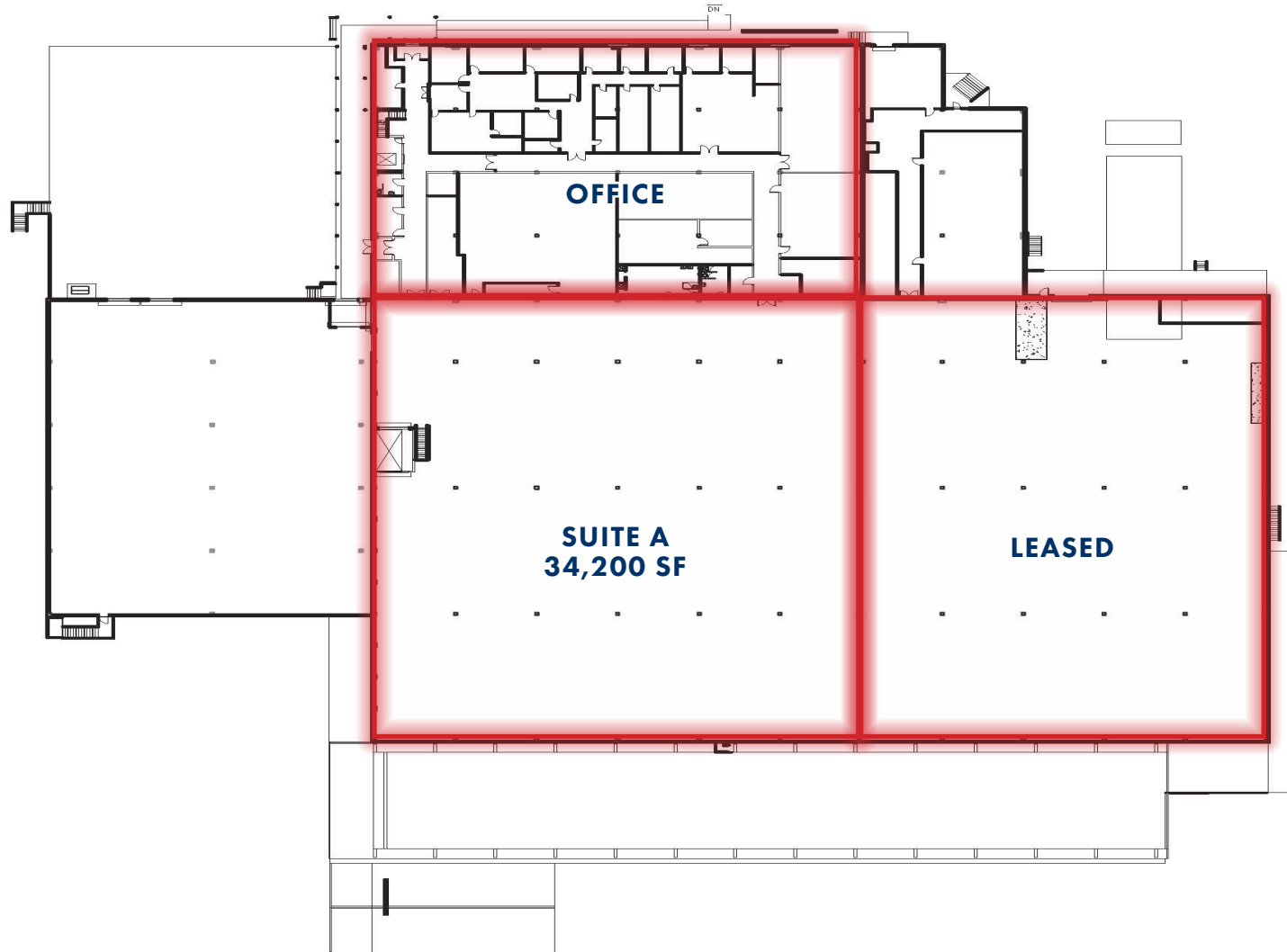
FOR LEASE: \$4.50 PSF

TICAM: \$1.50 PSF



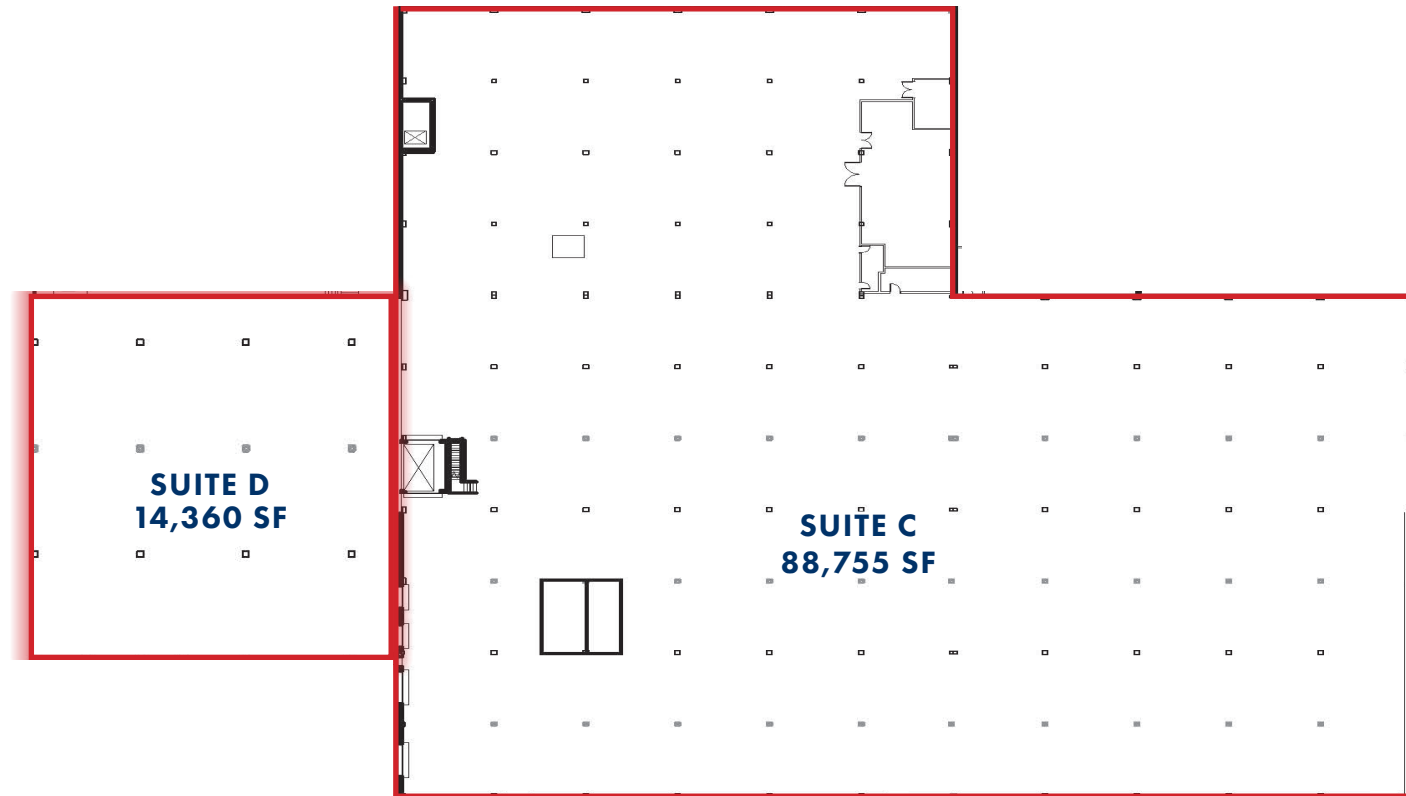
FLOORPLAN - MAIN LEVEL

2920 N TRYON ST | CHARLOTTE, NC 28206



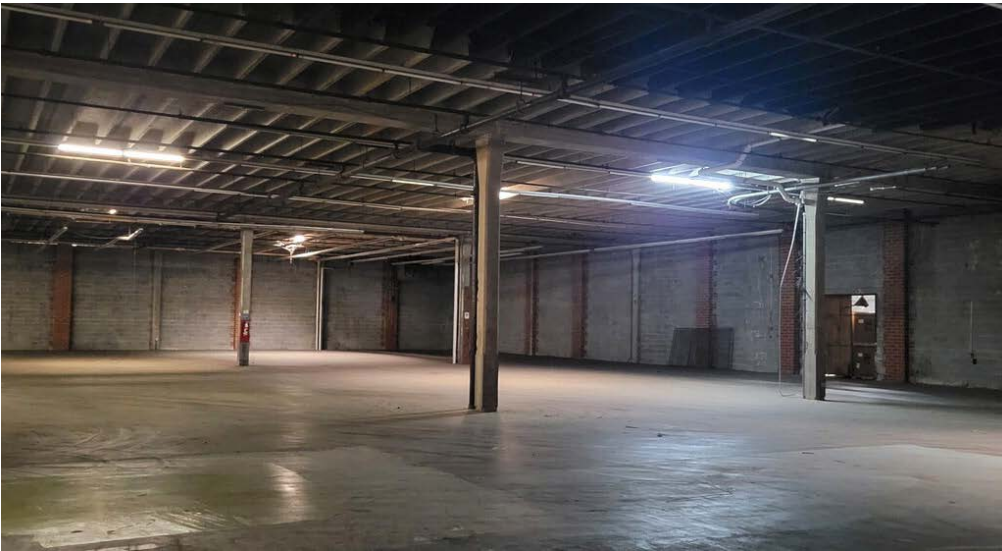
FLOORPLAN - BASEMENT LEVEL

2920 N TRYON ST | CHARLOTTE, NC 28206



PHOTOS

2920 N TRYON ST | CHARLOTTE, NC 28206



ADDITIONAL OUTDOOR STORAGE FOR LEASE: \$4,500/AC/MO