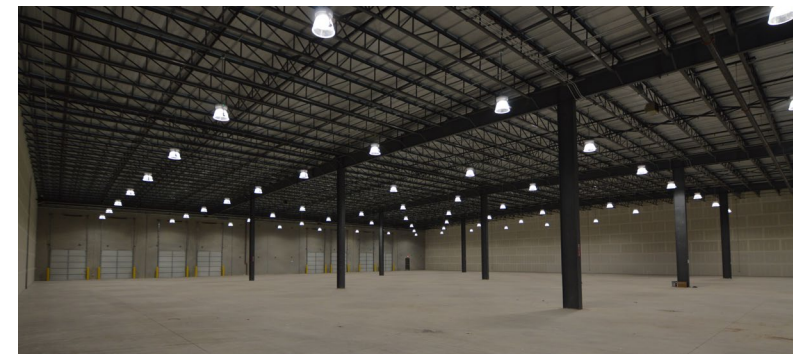


62,314 SQUARE FEET AVAILABLE FOR LEASE

SOUTH PARK IV

7042 INDUSTRIAL WAY | SAN ANTONIO, TEXAS 78252



SOUTH PARK IV is a 151,793 square foot, Class A Distribution Facility located near Loop 410 and IH-35 in Southwest San Antonio.

AVAILABILITY INFO

- +/- 750 SF existing office
- 60 parking spaces
- ESFR Sprinklers
- 24' clear height
- 21 dock doors
- Cross dock
- 1 ramp
- Built in 2020

AVAILABILITY & PRICING

Available 9/1/26

Pricing: Contact Broker



FOR INFORMATION, CONTACT:

Kevin Cosgrove | 210.298.8527 | kevin.cosgrove@streamrealty.com
Andrew Katzfey | 210.298.8537 | andrew.katzfey@streamrealty.com

Proudly Owned by



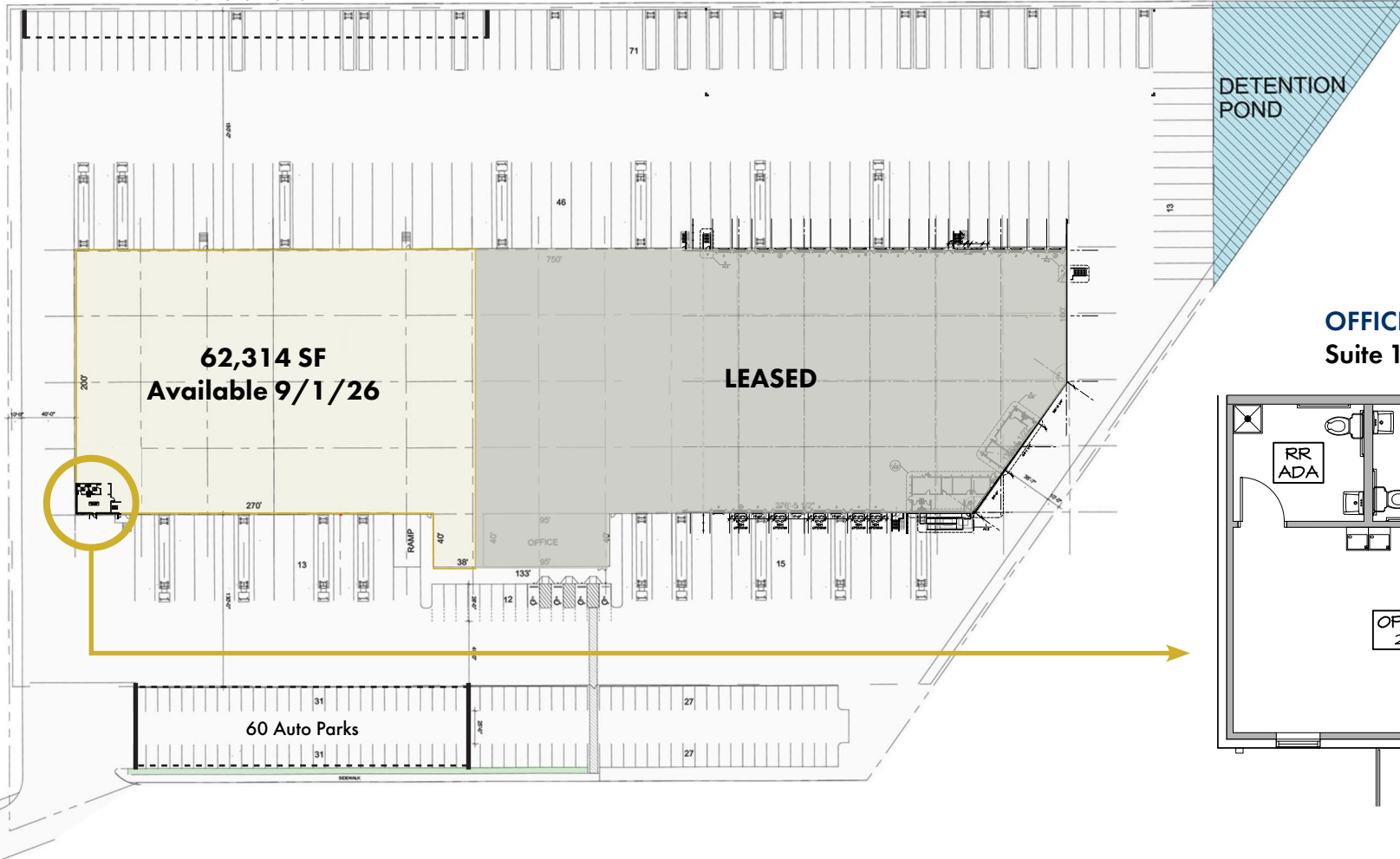
62,314 SQUARE FEET AVAILABLE FOR LEASE

SOUTH PARK IV

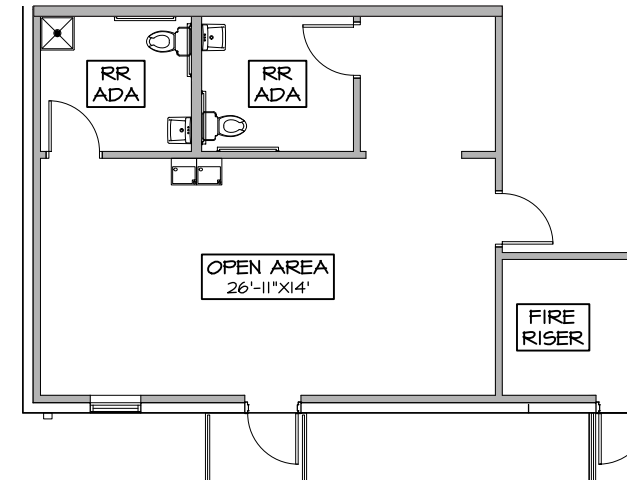
7042 INDUSTRIAL WAY | SAN ANTONIO, TEXAS 78252

SITE PLAN

29 Trailer Parks



OFFICE FLOOR PLAN
Suite 101 - Avail. 9/1/26



FOR INFORMATION, CONTACT:

Kevin Cosgrove | 210.298.8527 | kevin.cosgrove@streamrealty.com
Andrew Katzfey | 210.298.8537 | andrew.katzfey@streamrealty.com

Proudly Owned by

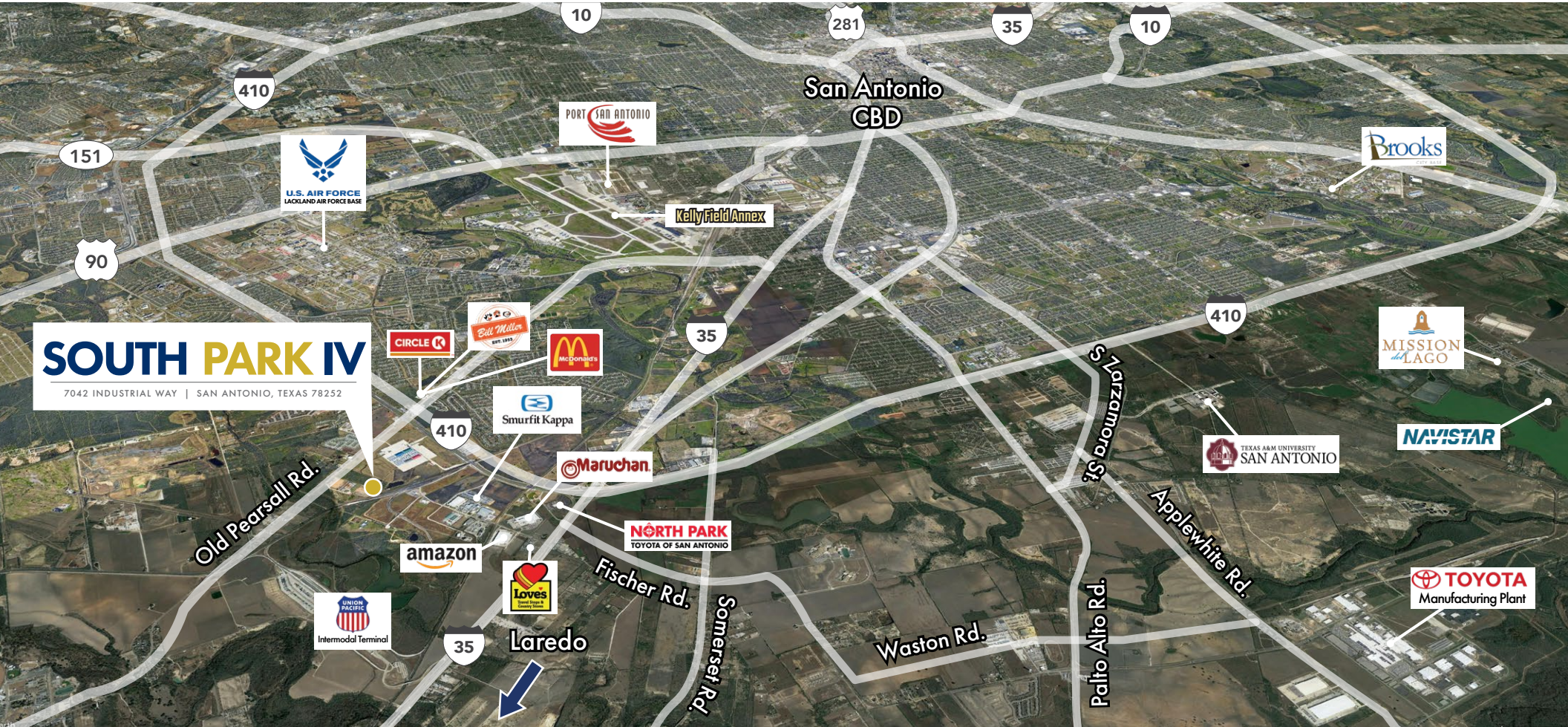


62,314 SQUARE FEET AVAILABLE FOR LEASE

SOUTH PARK IV

7042 INDUSTRIAL WAY | SAN ANTONIO, TEXAS 78252

LOCATION AERIAL



FOR INFORMATION, CONTACT:

Kevin Cosgrove | 210.298.8527 | kevin.cosgrove@streamrealty.com
Andrew Katzfey | 210.298.8537 | andrew.katzfey@streamrealty.com

Proudly Owned by

