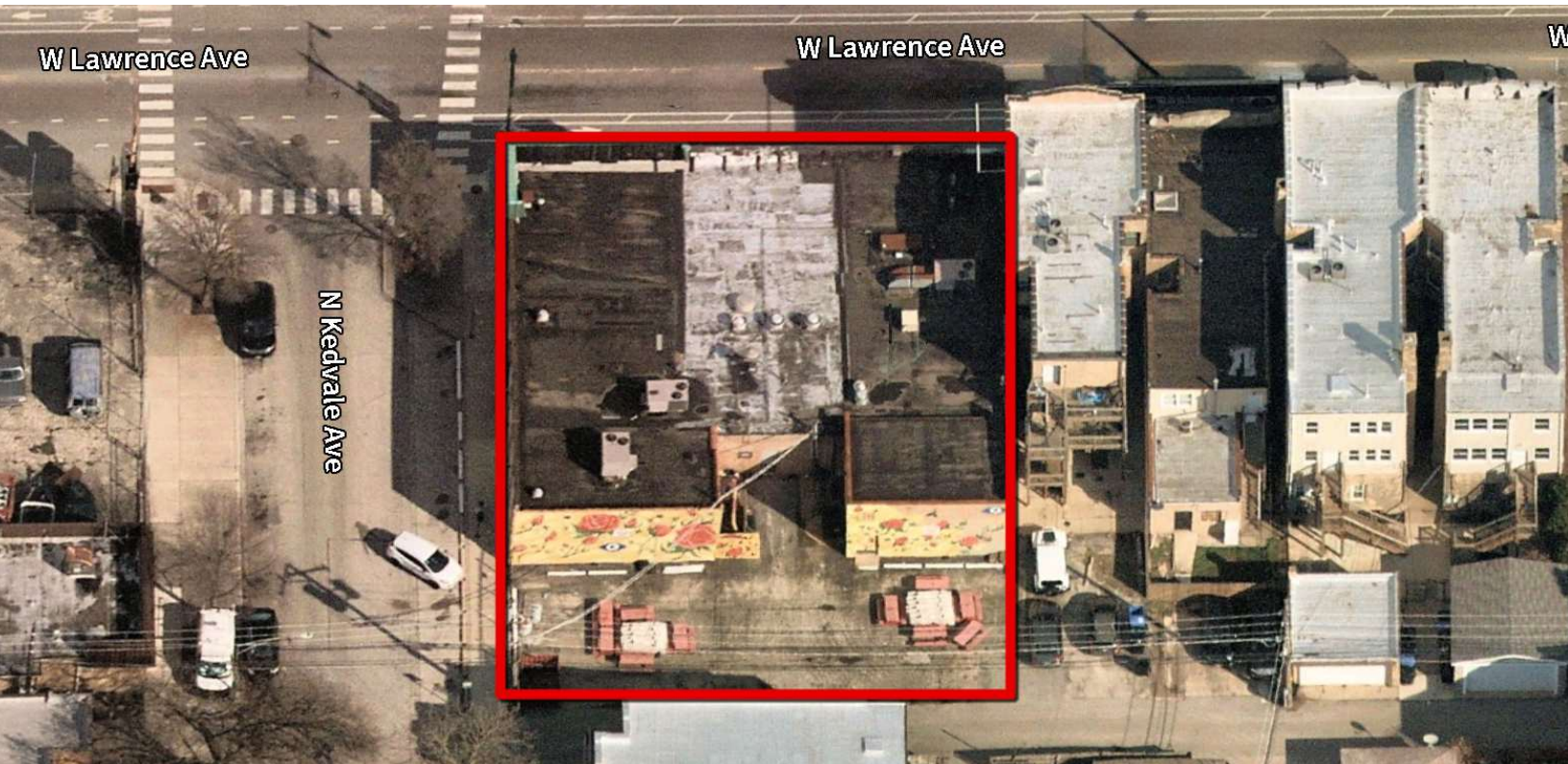


AVAILABLE FOR SALE

4125-4129 W LAWRENCE AVENUE, CHICAGO, IL 60630



PROPERTY DESCRIPTION

- Highly trafficked Lawrence Avenue in Albany Park
- Access to public transportation

PROPERTY HIGHLIGHTS

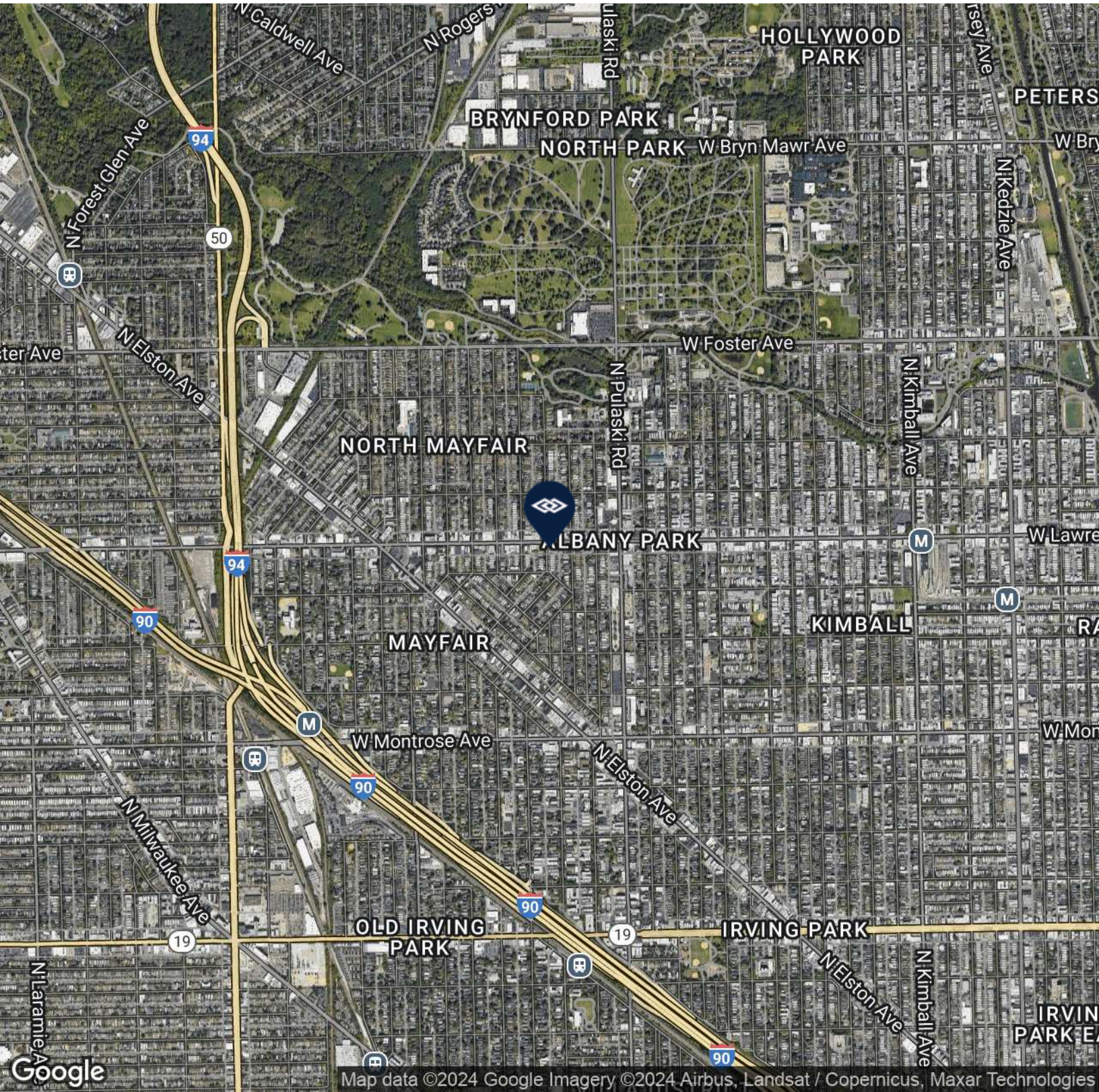
- B1-1 Zoning allows for many uses, redevelopment and/or potential up-zoning
- .25-acre land site
- Business operated by same family for 3 generations
- Corner property on Lawrence Avenue
- Many new commercial projects nearby
- Rear parking available, currently set up as an outdoor patio for the restaurant

OFFERING SUMMARY

Building Size	8,700 SF
Lot Size	.25 acres or 10,900 SF
Zoning	B1-1
2023 Taxes	\$11,268.16
Asking Price	\$1,700,000

AVAILABLE FOR SALE

4125-4129 W LAWRENCE AVENUE, CHICAGO, IL 60630



Laura Perlmán | Associate | 773.714.2147 | lperlman@darwinpw.com



970 N Oaklawn Suite 100 | Elmhurst, IL 60126 | Tel: 630.782.9520 | darwinpw.com
Submitted subject to error, change in status, or withdrawal without notice.