

# RELIGIOUS PROPERTY FOR SALE

**5,000± TOTAL SF | 0.67± ACRES**

**FOUNDRY**  
COMMERCIAL



**2720 FLY RD, SANTA FE, TN 38482**

**ASKING PRICE: \$550,000**

## PROPERTY DESCRIPTION

- 5,000± square foot building on 0.67± acres
- The main level contains a sanctuary with a raised pulpit and wooden pews. The upstairs contains four classrooms and a restroom. The building has a basement which holds a large fellowship hall, a kitchen, and a restroom.
- Zoning is A2 Rural Residential
- Located approximately one hour southwest of Nashville and is easily accessible from both state route 247 and state route 7.
- Buyer will need to verify parcel acreage.

<b>PARCEL ID</b>	0600321 A 00200
<b>COUNTY</b>	Maury
<b>CURRENT USE</b>	Religious
<b>ZONING</b>	A2 Rural Residential
<b># OF BUILDINGS</b>	1
<b>TOTAL BUILDING SF</b>	5,000± SF
<b>ACREAGE</b>	0.67± AC
<b>PARKING</b>	Grass

### FOR MORE INFORMATION, PLEASE CONTACT:

**MATT MESSIER, CCIM, SIOR**  
Principal, Managing Director  
**407.540.7718**  
matt.messier@foundrycommercial.com

**FOUNDRY**  
COMMERCIAL

MISSION  
PROPERTY  
GROUP

### IN COOPERATION WITH:

**JENNY ADCOX**  
Principal Broker  
**931.628.0735**  
jennyadcox@kwcommercial.com



Although all information furnished regarding for sale, rental or financing is from sources we deem reliable, such information has not been verified and no express representation is made nor is any to be implied as to the accuracy thereof, and it is submitted subject to errors, omissions, changes of price, rental or other conditions, prior sale, lease or financing, or withdrawal without notice. All sizes are approximate and subject to survey.

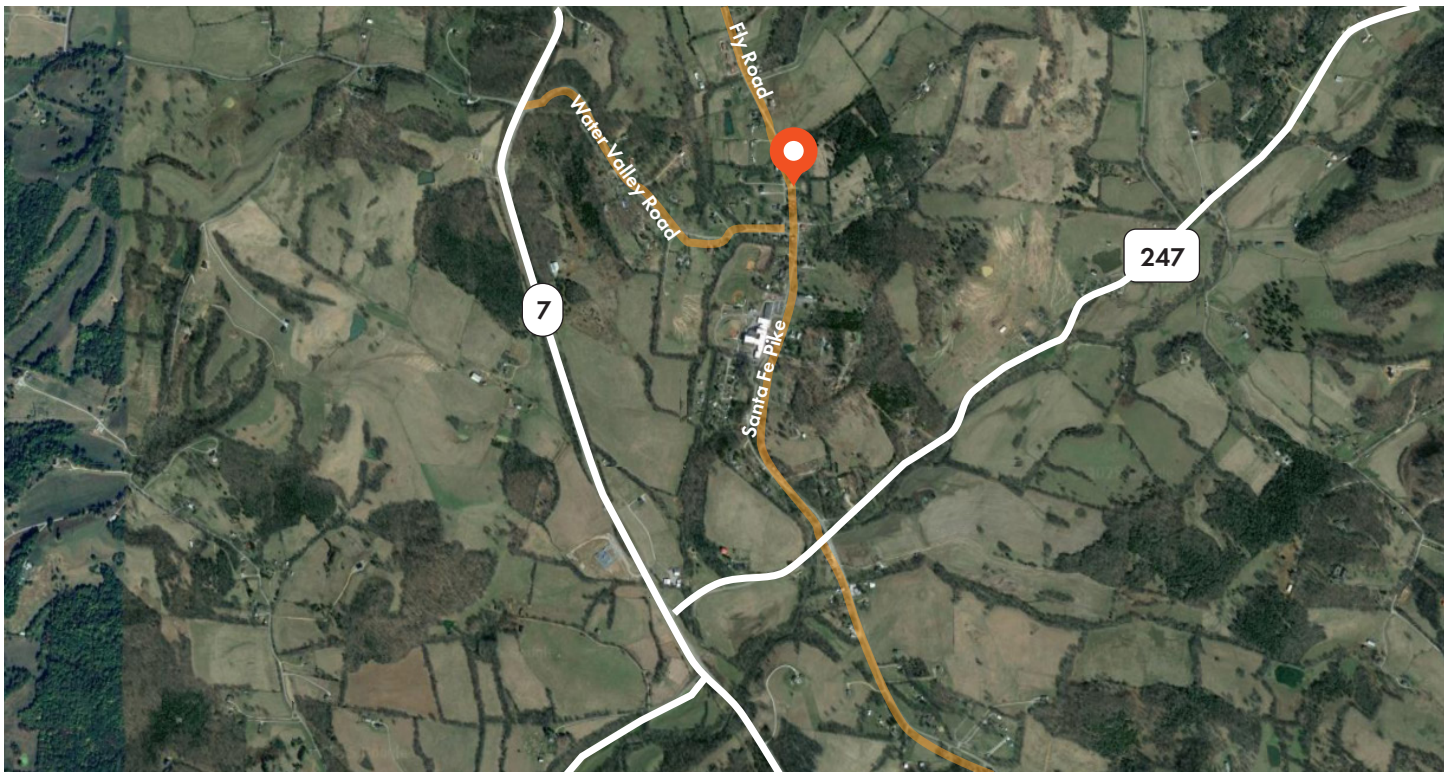
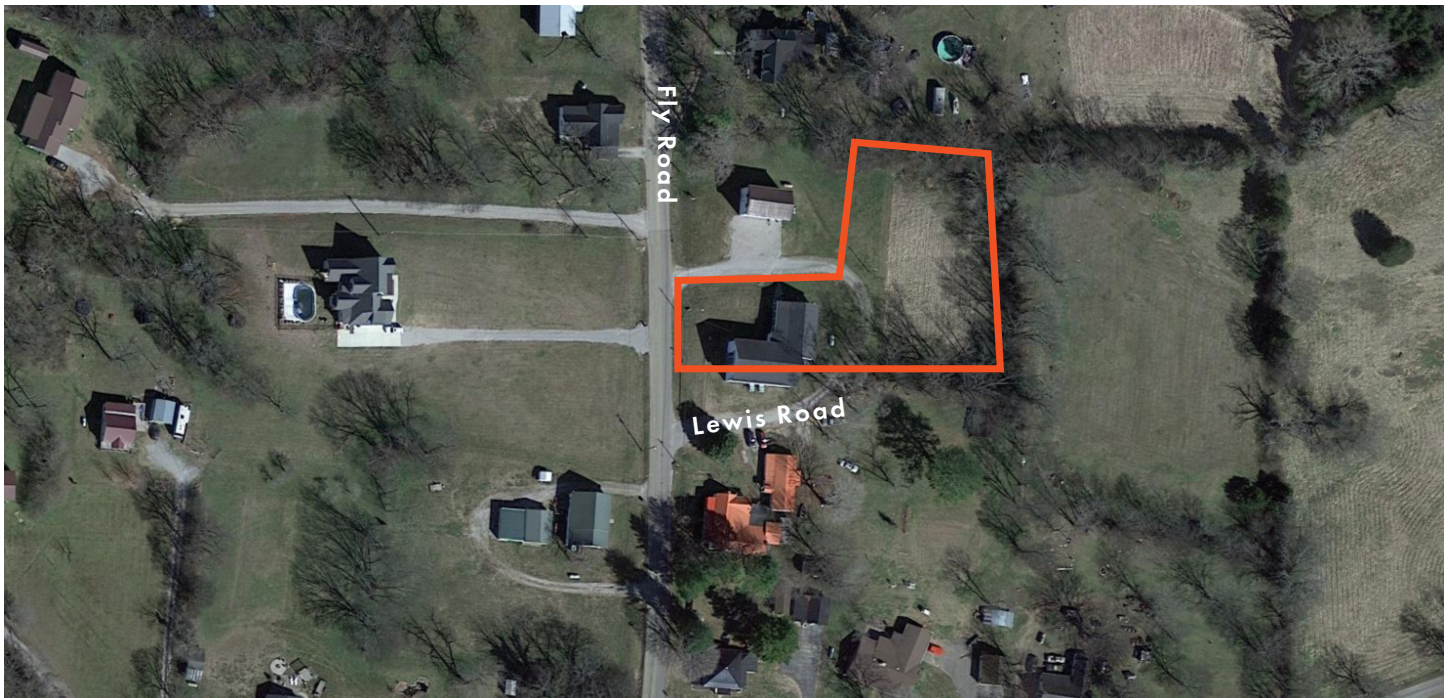


# RELIGIOUS PROPERTY FOR SALE

**5,000± TOTAL SF | 0.67± ACRES**

2720 FLY RD, SANTA FE, TN

## AERIAL & PROPERTY OUTLINE



FOR MORE INFORMATION, PLEASE CONTACT:

MATT MESSIER, CCIM, SIOR  
Principal, Managing Director  
**407.540.7718**  
[matt.messier@foundrycommercial.com](mailto:matt.messier@foundrycommercial.com)

**FOUNDRY**  
COMMERCIAL

MISSION  
PROPERTY  
GROUP

IN COOPERATION WITH:

JENNY ADCOX  
Principal Broker  
**931.628.0735**  
[jennyadcox@kwcommercial.com](mailto:jennyadcox@kwcommercial.com)



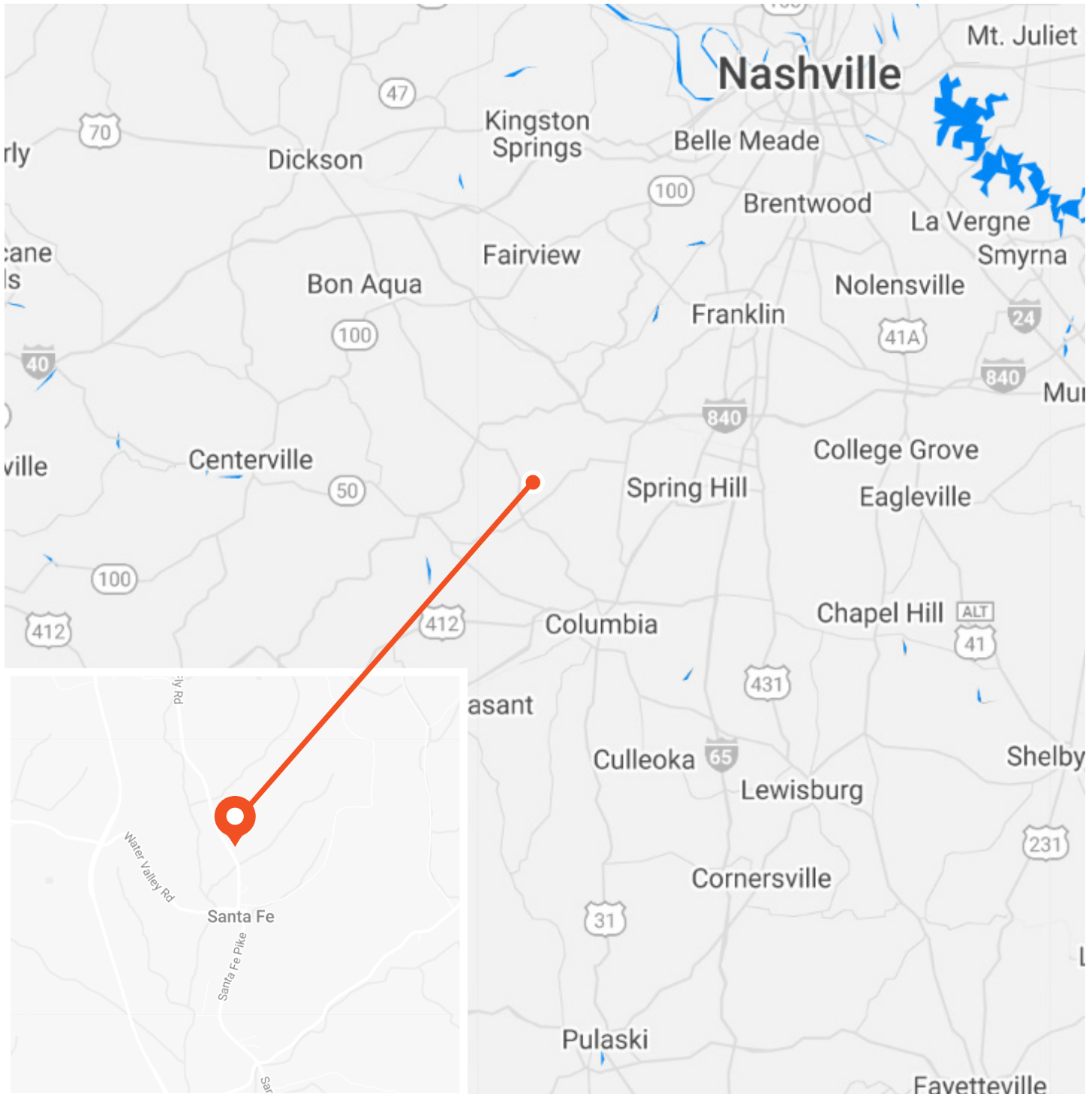
Although all information furnished regarding for sale, rental or financing is from sources we deem reliable, such information has not been verified and no express representation is made nor is any to be implied as to the accuracy thereof, and it is submitted subject to errors, omissions, changes of price, rental or other conditions, prior sale, lease or financing, or withdrawal without notice. All sizes are approximate and subject to survey.

# RELIGIOUS PROPERTY FOR SALE

**5,000± TOTAL SF | 0.67± ACRES**

2720 FLY RD, SANTA FE, TN

## LOCATION



### FOR MORE INFORMATION, PLEASE CONTACT:

MATT MESSIER, CCIM, SIOR  
Principal, Managing Director  
**407.540.7718**  
[matt.messier@foundrycommercial.com](mailto:matt.messier@foundrycommercial.com)

**FOUNDRY**  
COMMERCIAL

MISSION  
PROPERTY  
GROUP

### IN COOPERATION WITH:

JENNY ADCOX  
Principal Broker  
**931.628.0735**  
[jennyadcox@kwcommercial.com](mailto:jennyadcox@kwcommercial.com)



Although all information furnished regarding for sale, rental or financing is from sources we deem reliable, such information has not been verified and no express representation is made nor is any to be implied as to the accuracy thereof, and it is submitted subject to errors, omissions, changes of price, rental or other conditions, prior sale, lease or financing, or withdrawal without notice. All sizes are approximate and subject to survey.



# RELIGIOUS PROPERTY FOR SALE

**5,000± TOTAL SF | 0.67± ACRES**

2720 FLY RD, SANTA FE, TN

## PHOTOS



Sanctuary



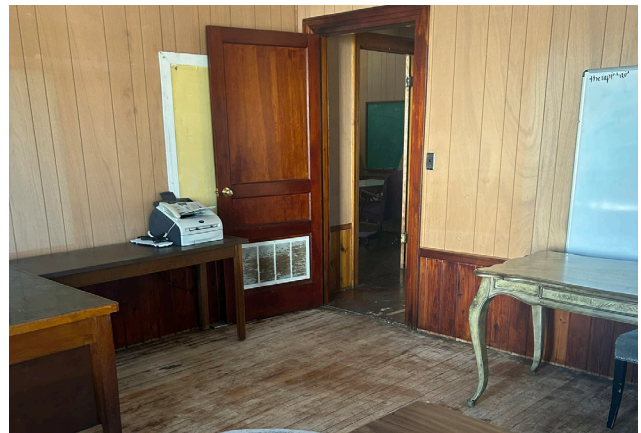
Fellowship Hall



Meeting Room



Kitchen



Office

FOR MORE INFORMATION, PLEASE CONTACT:

MATT MESSIER, CCIM, SIOR  
Principal, Managing Director  
**407.540.7718**  
[matt.messier@foundrycommercial.com](mailto:matt.messier@foundrycommercial.com)

**FOUNDRY**  
COMMERCIAL

MISSION  
PROPERTY  
GROUP

IN COOPERATION WITH:

JENNY ADCOX  
Principal Broker  
**931.628.0735**  
[jennyadcox@kwcommercial.com](mailto:jennyadcox@kwcommercial.com)



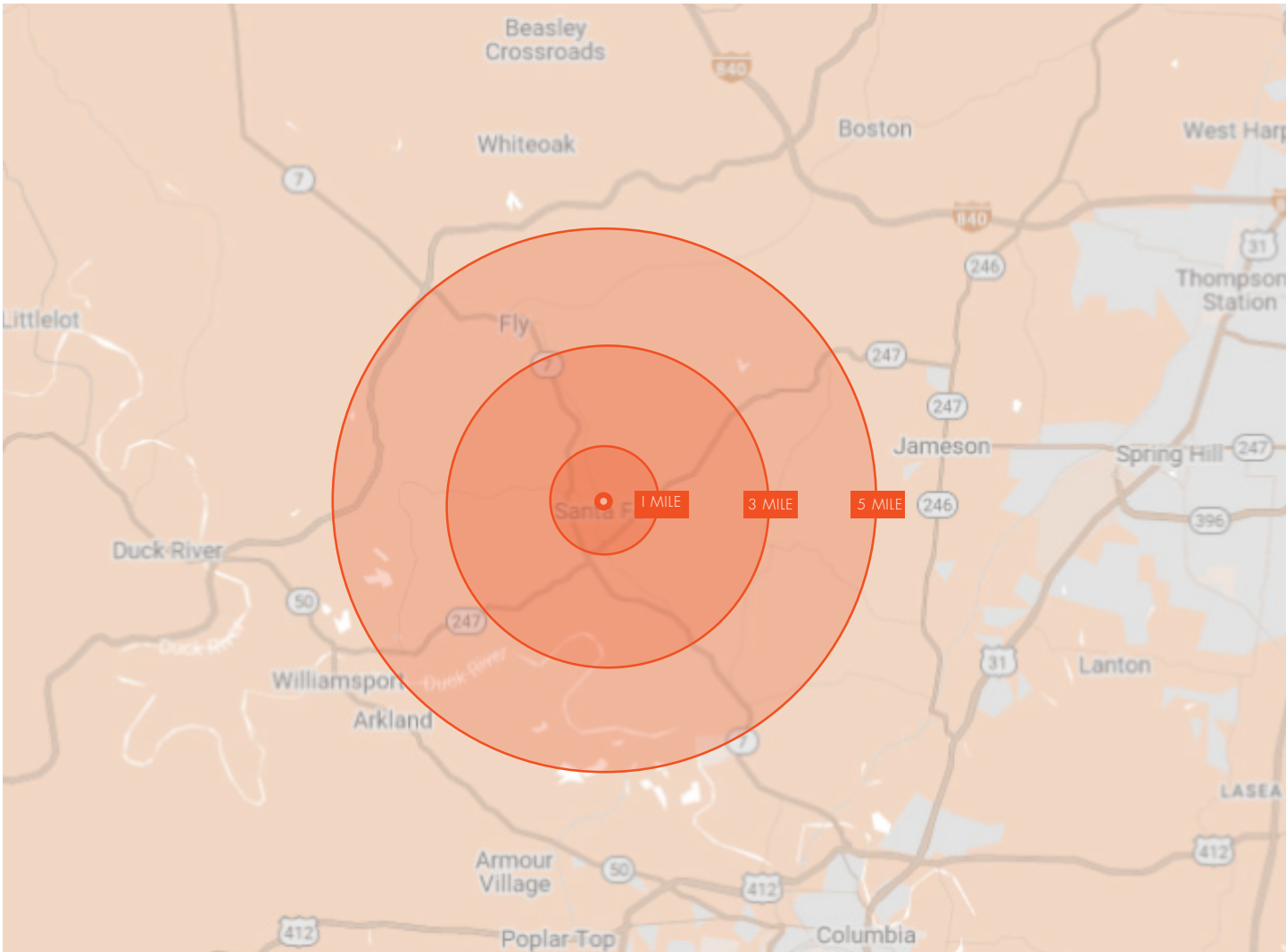
Although all information furnished regarding for sale, rental or financing is from sources we deem reliable, such information has not been verified and no express representation is made nor is any to be implied as to the accuracy thereof, and it is submitted subject to errors, omissions, changes of price, rental or other conditions, prior sale, lease or financing, or withdrawal without notice. All sizes are approximate and subject to survey.

# RELIGIOUS PROPERTY FOR SALE

## 5,000± TOTAL SF | 0.67± ACRES

2720 FLY RD, SANTA FE, TN

### SITE DEMOGRAPHICS



#### 1 MILE RADIUS

	304 ESTIMATED POPULATION 2029
	44.4 MEDIAN AGE
	\$529,508 MEDIAN HOME VALUE 2024
	\$94,259 AVG HOUSEHOLD INCOME

#### 3 MILE RADIUS

	1,464 ESTIMATED POPULATION 2029
	43.8 MEDIAN AGE
	\$532,797 MEDIAN HOME VALUE 2024
	\$93,467 AVG HOUSEHOLD INCOME

#### 5 MILE RADIUS

	3,643 ESTIMATED POPULATION 2029
	43.4 MEDIAN AGE
	\$526,957 MEDIAN HOME VALUE 2024
	\$101,853 AVG HOUSEHOLD INCOME

#### FOR MORE INFORMATION, PLEASE CONTACT:

MATT MESSIER, CCIM, SIOR  
Principal, Managing Director  
**407.540.7718**  
matt.messier@foundrycommercial.com

FOUNDRA  
COMMERCIAL

MISSION  
PROPERTY  
GROUP

#### IN COOPERATION WITH:

JENNY ADCOX  
Principal Broker  
**931.628.0735**  
jennyardcox@kwcommercial.com



Although all information furnished regarding for sale, rental or financing is from sources we deem reliable, such information has not been verified and no express representation is made nor is any to be implied as to the accuracy thereof, and it is submitted subject to errors, omissions, changes of price, rental or other conditions, prior sale, lease or financing, or withdrawal without notice. All sizes are approximate and subject to survey.