



FOR SUBLEASE

# 36567 Goddard Road Romulus, MI

Former CVS Available

## Property Highlights

- Former CVS Built in 2000
- 12,566 SF (90' x 141')
- Zoning: CBD-2, Downtown

### CONTACT US



**Lou Frango**  
248 226 1678  
lou.frango@colliers.com

**Colliers Detroit**  
400 W 4<sup>th</sup> Street, Suite 350  
Royal Oak, MI 48067  
colliers.com/detroit



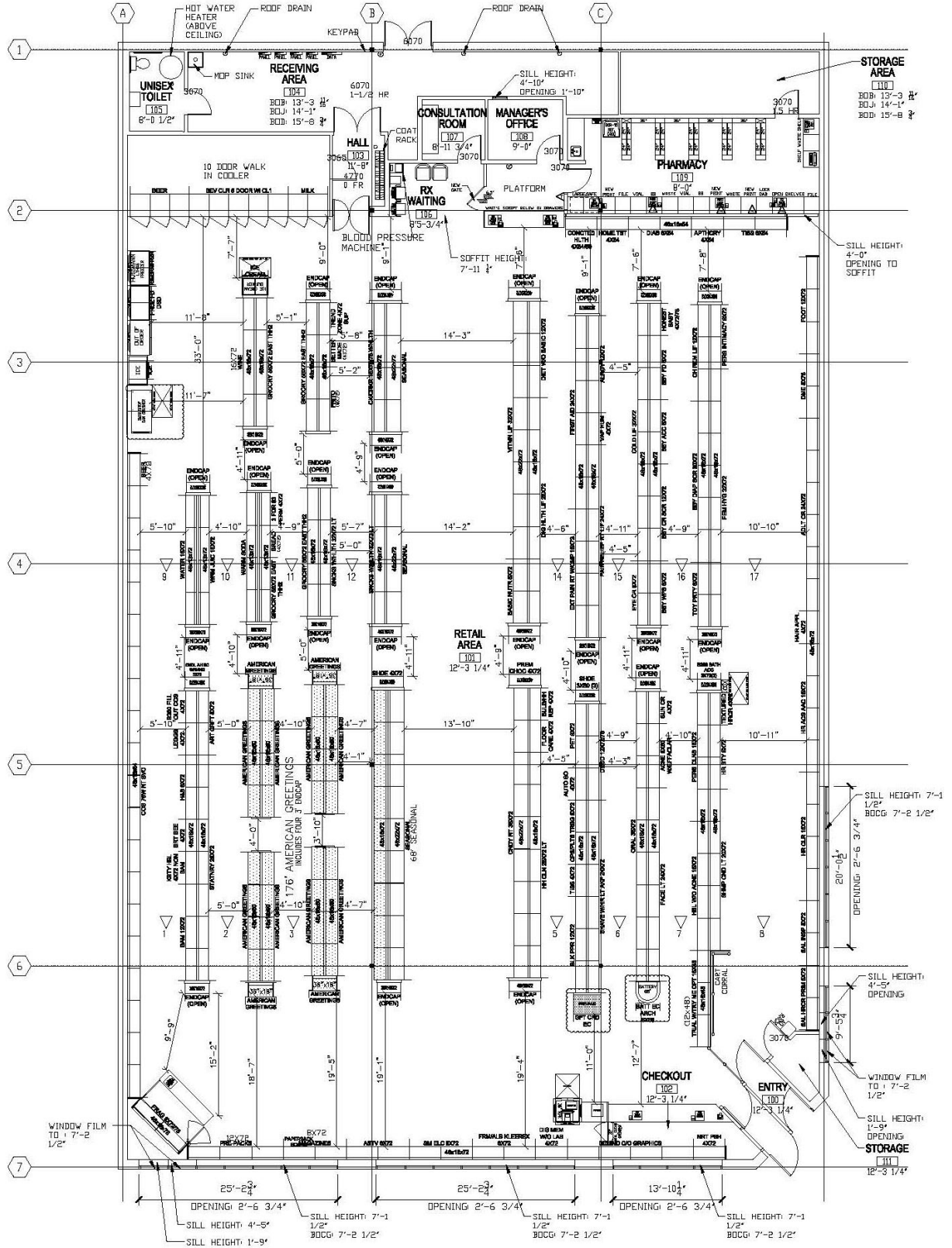
FORMER CVS FOR SUBLEASE



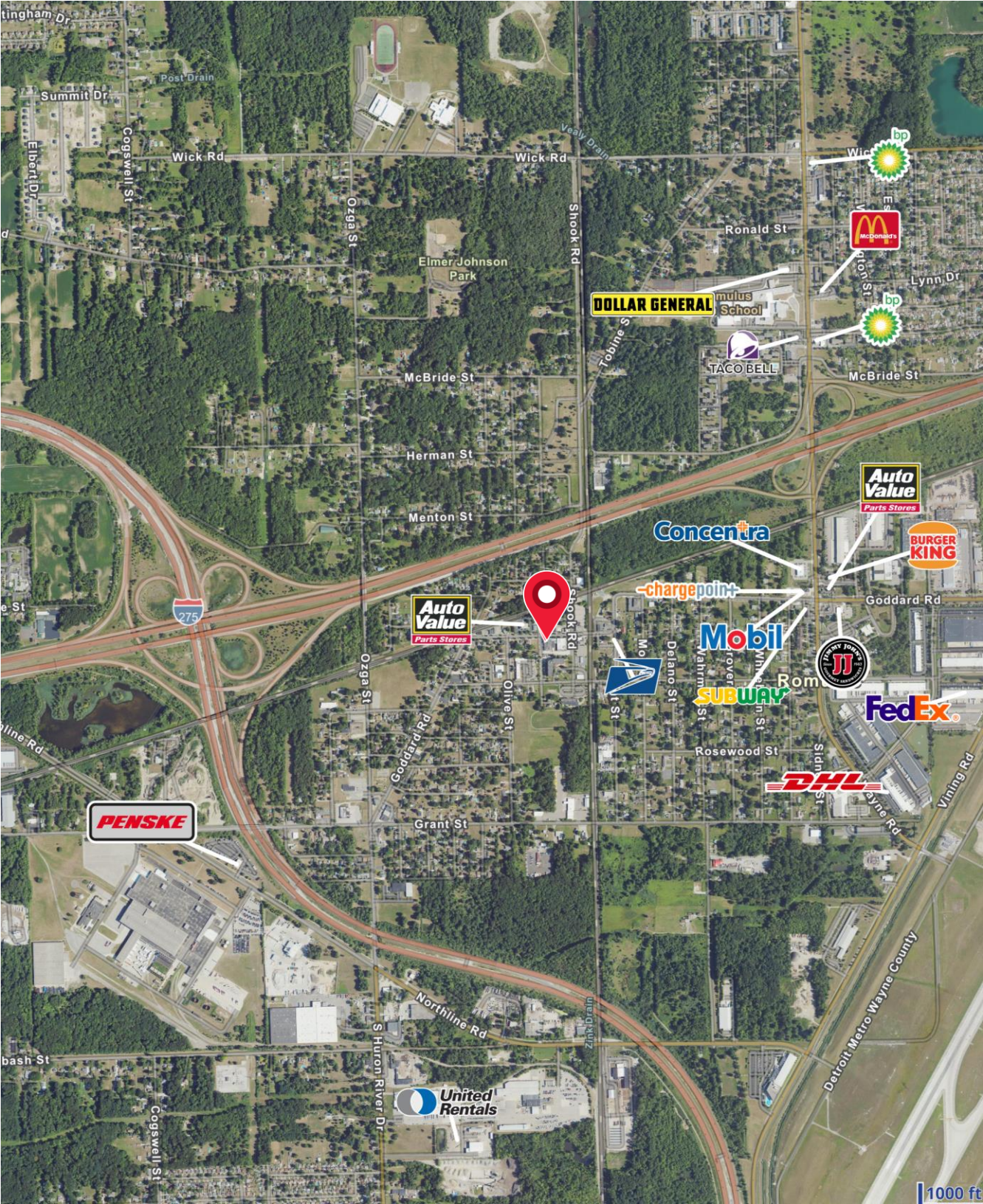
# Property Aerial



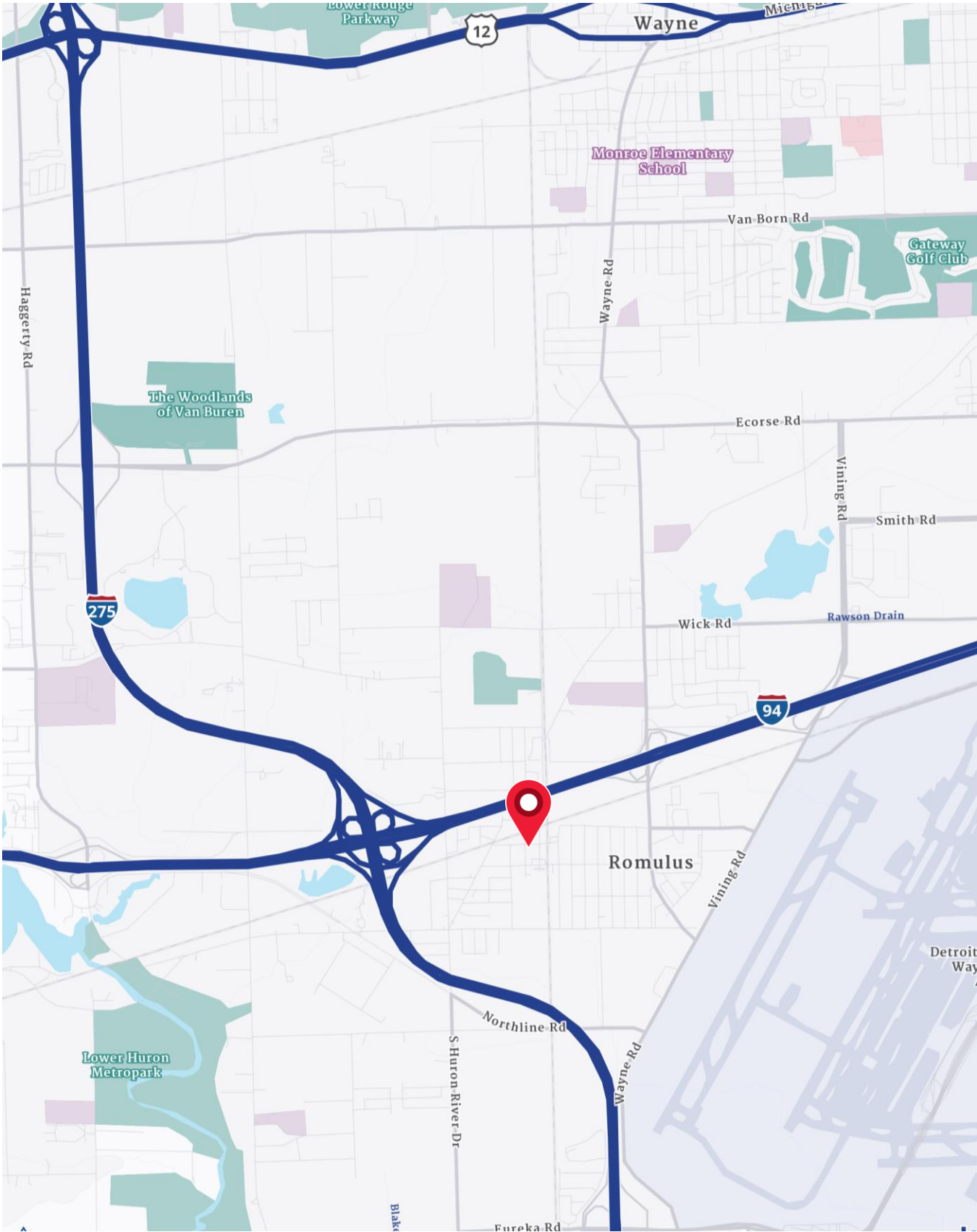
# Floor Plan



# Merchant Map



# Location Map



# Demographics

CURRENT YEAR SUMMARY	1 MILE RADIUS	3 MILE RADIUS	5 MILE RADIUS
Total Population	2,837	18,263	78,885
Total Households	1,279	7,540	33,143
Total Family Households	642	4,631	20,138
Average Household Size	2.20	2.40	2.36
Median Age	43.3	39.3	39.4
Population Age 25+	2,095	12,965	55,766
2010 - 2020 Population: Annual Growth Rate (CAGR)	-0.29%	0.63%	0.42%
2020 - 2023 Population: Annual Growth Rate (CAGR)	-0.03%	-0.07%	-0.53%
<b>5 YEAR PROJECTED TRENDS: ANNUAL RATE</b>			
Population	-0.25%	-0.21%	-0.37%
Households	-0.09%	0.08%	-0.04%
Families	-0.31%	-0.10%	-0.22%
Median Household Income	1.17%	1.84%	2.35%
<b>CURRENT YEAR POPULATION BY SEX</b>			
Male Population / % Male	1,385 / 48.8%	8,825 / 48.3%	38,571 / 48.9%
Female Population / % Female	1,452 / 51.2%	9,438 / 51.7%	40,314 / 51.1%
<b>INCOME &amp; HOUSEHOLDS SUMMARY</b>			
Median Household Income	\$53,556	\$67,266	\$68,248
Average Household Income	\$66,916	\$81,809	\$88,337
Per Capita Income	\$30,171	\$33,717	\$37,050
<b>SUMMARY BUSINESS DATA</b>			
Total Businesses	220	647	2,566
Total Daytime Population	4,992	28,730	93,953
Daytime Population: Workers	3,410	19,893	53,089
Daytime Population: Residents	1,582	8,837	40,864

#### Data Notes:

- Household population includes persons not residing in group quarters. Average Household Size is the household population divided by total households. Persons in families include the householder and persons related to the householder by birth, marriage, or adoption.
- Income represents the preceding year, expressed in current dollars. Household income includes wage and salary earnings, interest dividends, net rents, pensions, SSI and welfare payments, child support, and alimony.
- Per Capita Income represents the income received by all persons aged 15 years and over divided by the total population.



**Lou Frango**  
248 226 1678  
lou.frango@colliers.com