

1,092 SF



**FOR LEASE | Unit # 206 6820 188 Street, Surrey**

**1,092 SF Freestanding Building**

**Property Highlights:**

- ▶ Excellent Location – Near all Amenities
- ▶ C5 – Neighbourhood Commercial Zone
- ▶ Flexible Office Space
- ▶ Plenty of Parking

**Ken Kiers**  
 Personal Real Estate Corporation  
 604 209 2222  
 kkiers@naicommercial.ca

NAI Commercial  
 20353 64<sup>th</sup> Avenue, Suite 214  
 Langley, BC V2Y 1N5  
 +1 604 683 7535  
 naicommercial.ca

Unit # 206 6820 188 Street  
Surrey, BC

## Building Description

Freestanding building located in heart of Clayton Heights. Walking distance to future Skytrain Stations and all amenities.

## Lease Rate

**Unit Description:** Second Floor Office - Elevator Access

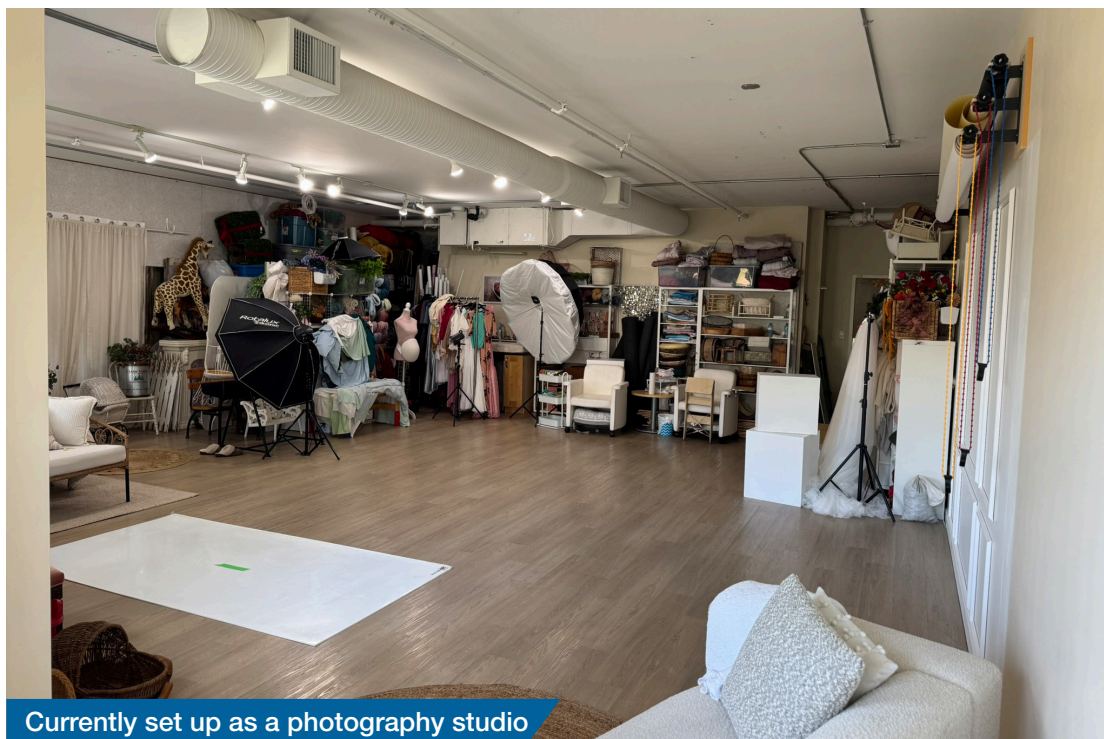
**Unit Size:** 1,092 SF Gross

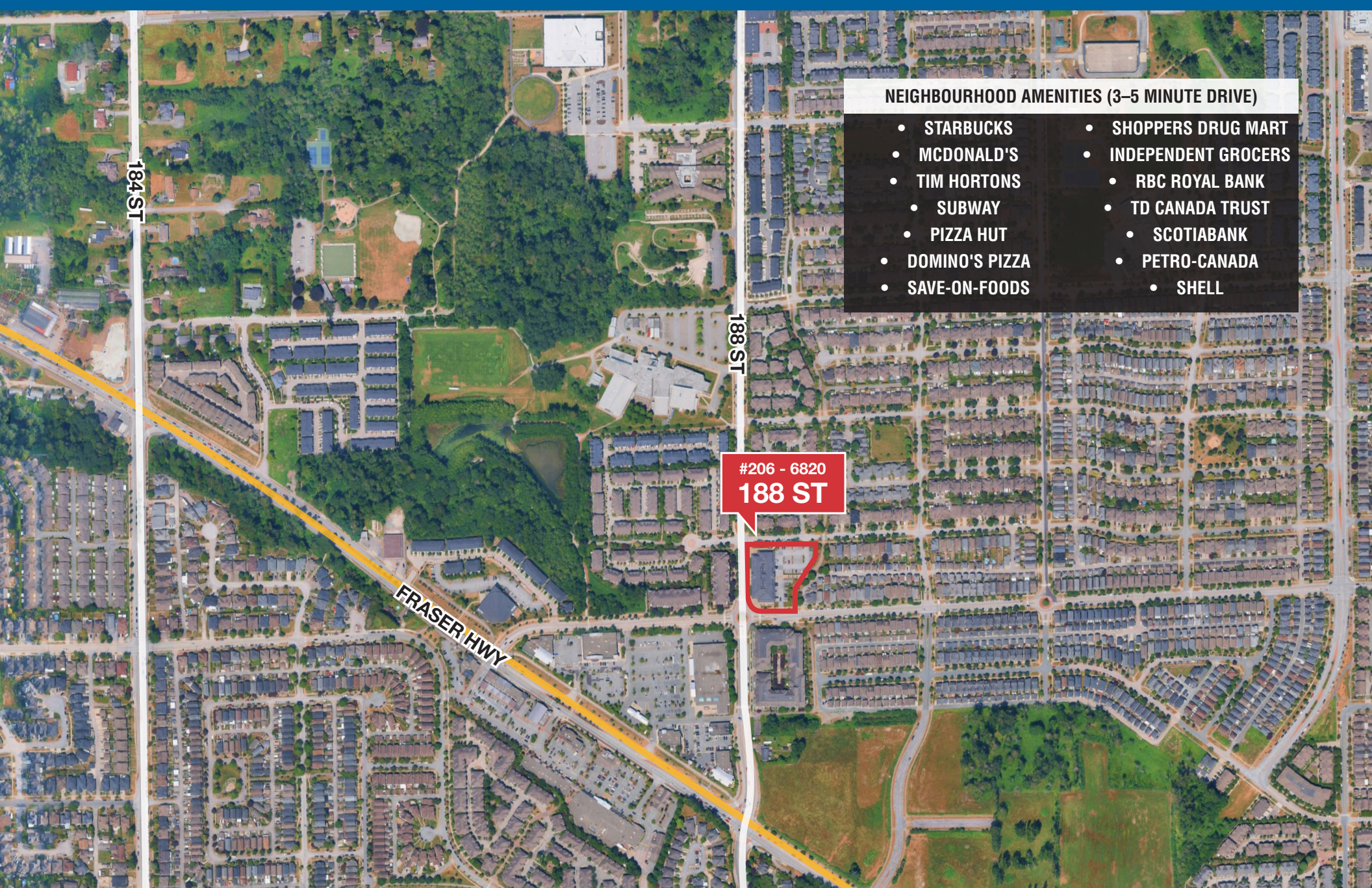
**Parking:** 75 Community Spaces

**Lease Rate:** \$22.00/SF or \$2,002.00/Month + GST

**Operating Costs:** \$15.00/SF or \$1,365.00/Month + GST

**Total Rent:** \$3,367.00 per month plus GST





**NEIGHBOURHOOD AMENITIES (3-5 MINUTE DRIVE)**

- STARBUCKS
- MCDONALD'S
- TIM HORTONS
- SUBWAY
- PIZZA HUT
- DOMINO'S PIZZA
- SAVE-ON-FOODS
- SHOPPERS DRUG MART
- INDEPENDENT GROCERS
- RBC ROYAL BANK
- TD CANADA TRUST
- SCOTIABANK
- PETRO-CANADA
- SHELL

#206 - 6820  
**188 ST**

**Ken Kiers**  
Personal Real Estate Corporation  
604 209 2222  
kkiers@naicommercial.ca

**NAI Commercial**

NAI Commercial (Langley) Ltd. | 20353 64<sup>th</sup> Avenue, Suite 214, Langley, BC V2Y 1N5  
+ 1 604 683 7535 | [naicommercial.ca](http://naicommercial.ca)

No warranty or representation, express or implied, is made as to the accuracy of the information contained herein, and the same is submitted subject to errors, omissions, change of price, rental or other conditions, prior sale, lease or financing, or withdrawal without notice, and of any special listing conditions imposed by our principals no warranties or representations are made as to the condition of the property or any hazards contained therein are any to be implied. Aerial image(s) courtesy of Google, Landsat/Copernicus.