

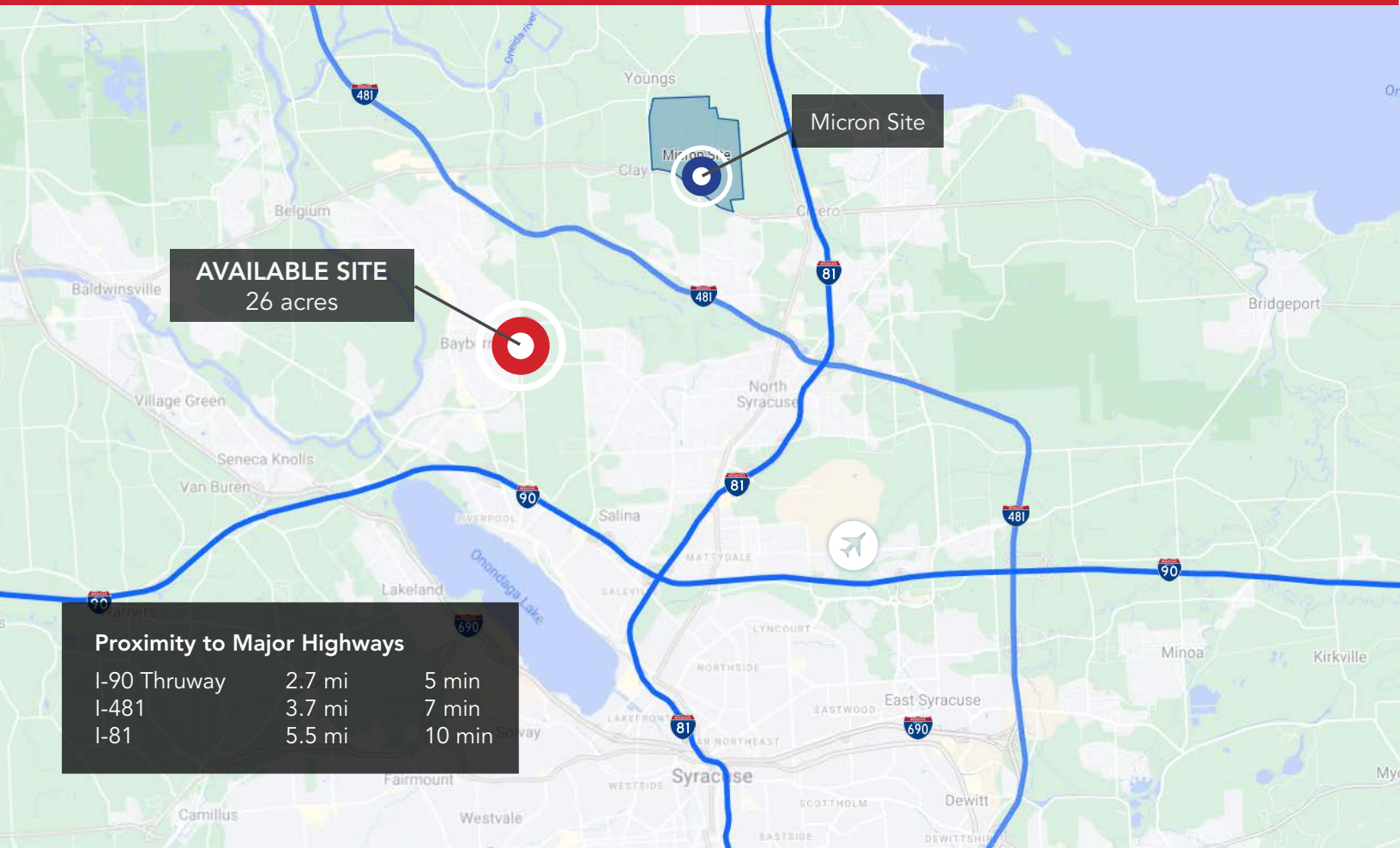
AVAILABLE

26 ACRE BUILD-TO-SUIT OPPORTUNITY



MORGAN-BUCKLEY RD
LIVERPOOL, NY

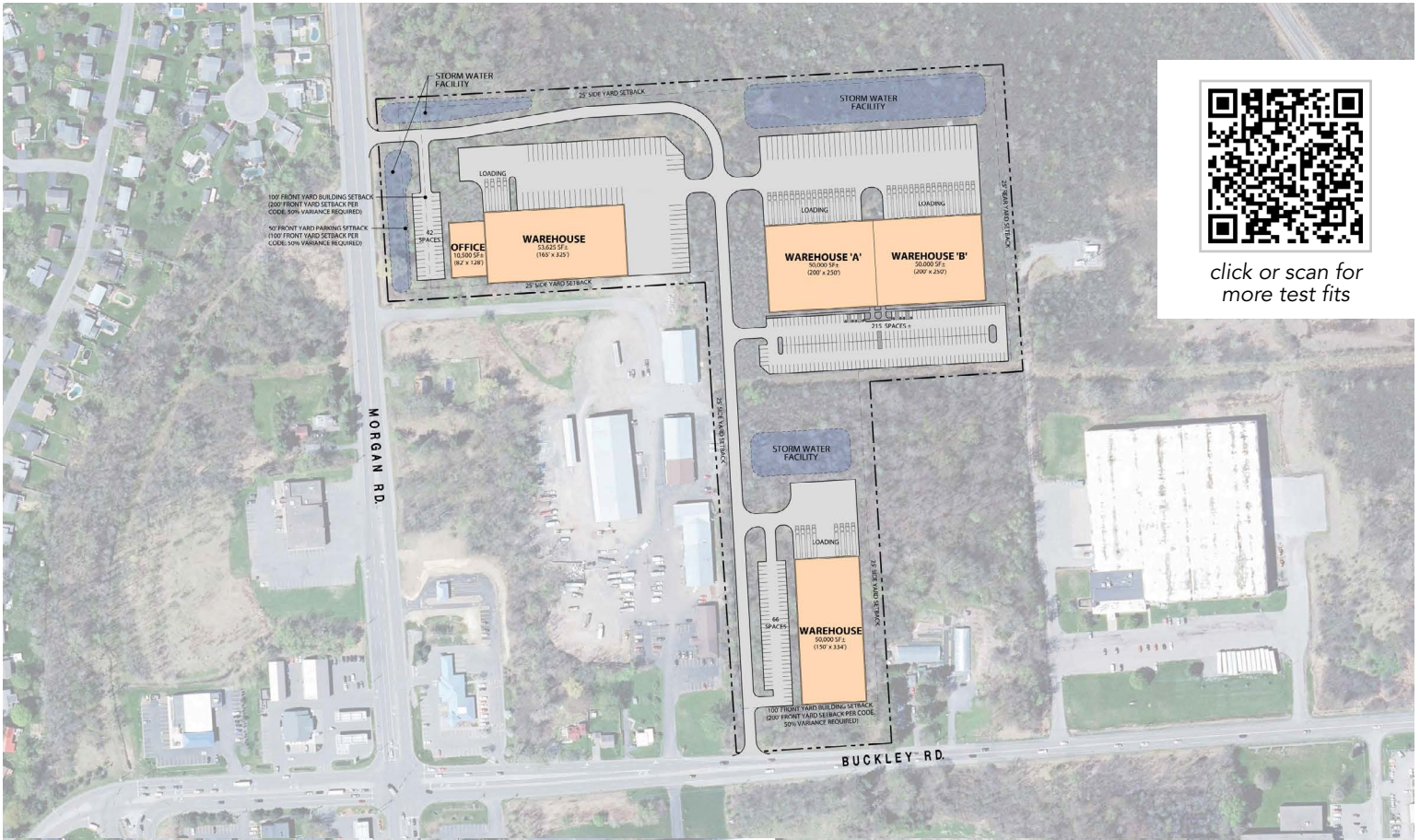
VIP



click or scan for
property fly over

SITE DETAILS

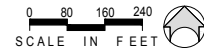
- » Zoned Industrial
- » Approved for Subdivision
- » Direct access from Morgan and Buckley Rds
- » 33,000+ Annual Daily Traffic (AADT)
- » All utilities nearby or on-site
- » 11 minutes to Hancock International Airport
- » 9 minutes from new Micron Chip Fab site



click or scan for more test fits

MORGAN & BUCKLEY - CONCEPTUAL SITE PLAN
TOWN OF CLAY, NY

MARCH 4, 2024



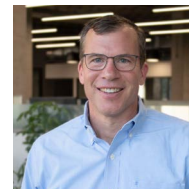
VIP STRUCTURES

TURNKEY SERVICES: DESIGN | BUILD | DEVELOP

SYRACUSE, NY | SINCE 1975



VIP has been providing turn-key ground-up development services for four decades. With over 40 million square feet designed and built, and over 400 million dollars worth of real estate financed, VIP offers a single point of contact for your building project. Whether High-Tech, Industrial, Commercial, Housing & Mixed-Use, or Medical, VIP can seamlessly design, build, and develop any facility to meet your business needs.



CONTACT:

Mike Durkin

VP Client Relations

315.727.6220

mdurkin@vipstructures.com

What sets VIP apart is that we understand what it is to design, build, own, and operate facilities of all types. This means that when we are working with a client, we approach each decision from the owner's perspective.