

FOR SALE

17985 BEAR VALLEY RD

HESPERIA, CA 92345



Property Information

Asking Price: Negotiable

7,185 SF building size

37,897 SF lot size

0399-132-31 Parcel No. (APN)

Built in 2008

Tilt-up (pre-cast concrete) construction

Approx. 115 feet tunnel length

Approx. 25 vacuums

CHRISTOPHER STECK, CCIM

213.225.7231

christopher.steck@kidder.com

LIC N° 01841338

JOHN ANTHONY, SIOR

213.225.7218

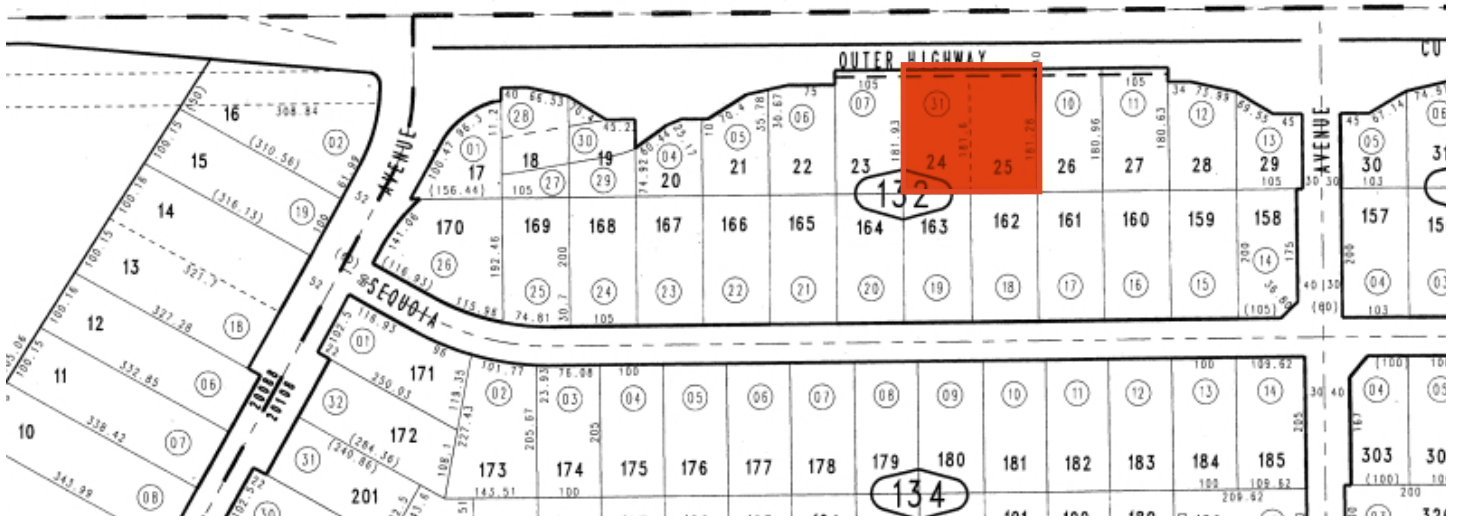
john.anthony@kidder.com

LIC N° 01226464

KIDDER.COM

This information supplied herein is from sources we deem reliable. It is provided without any representation, warranty, or guarantee, expressed or implied as to its accuracy. Prospective Buyer or Tenant should conduct an independent investigation and verification of all matters deemed to be material, including, but not limited to, statements of income and expenses. Consult your attorney, accountant, or other professional advisor.





KIDDER.COM

This information supplied herein is from sources we deem reliable. It is provided without any representation, warranty, or guarantee, expressed or implied as to its accuracy. Prospective Buyer or Tenant should conduct an independent investigation and verification of all matters deemed to be material, including, but not limited to, statements of income and expenses. Consult your attorney, accountant, or other professional advisor.



KIDDER.COM

This information supplied herein is from sources we deem reliable. It is provided without any representation, warranty, or guarantee, expressed or implied as to its accuracy. Prospective Buyer or Tenant should conduct an independent investigation and verification of all matters deemed to be material, including, but not limited to, statements of income and expenses. Consult your attorney, accountant, or other professional advisor.

