



# RETAIL SPACE FOR LEASE

## 1703-1715 N. RAND ROAD PALATINE , IL



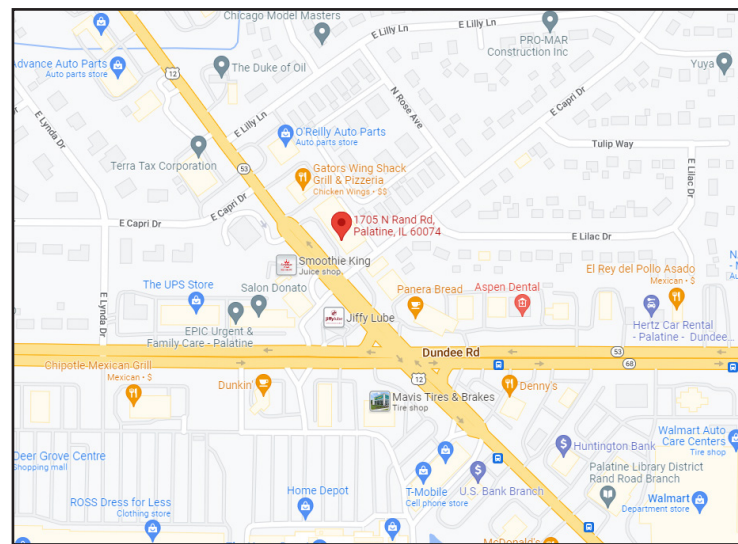
### BUILDING FEATURES:

- 902-1,510 SF Quality Retail Space Available ASAP
- Heavy Traffic counts over 30,300 vehicles per day
- Close proximity to shopping and dining
- Located one block north of Dundee Rd on busy Rand Rd (Rt 12) near Rt-53
- Vacants suites are in move in condition
- Over 257,000 consumers in a 5 mile radius
- 24-hour tenant access & tenant controlled HVAC
- Ideal for retail,service or office users

- Recently Renovated with excellent curb appeal
- Tenant Signage on busy Rand Road
- Building Monument sign in the heart of the Rand Rd retail corridor
- See [www.chicagolandcommercial.com](http://www.chicagolandcommercial.com) for links to 3-D Virtual Tours for each space!!!
- **Rental Rate: \$25.00 PSF Gross**

### AVAILABLE SPACE:

SUITE	SIZE (SF)	Rent	Available
1705	1,510 SF	\$3,145	ASAP
1709	902 SF	\$1,880	ASAP



### FOR MORE INFORMATION:

RANDY OLCZYK  
 Direct: 847.246.9611  
[randy@chicagolandcommercial.com](mailto:randy@chicagolandcommercial.com)

TOM CALLAHAN  
 Direct: 847.246.9636  
[Tom@chicagolandcommercial.com](mailto:Tom@chicagolandcommercial.com)



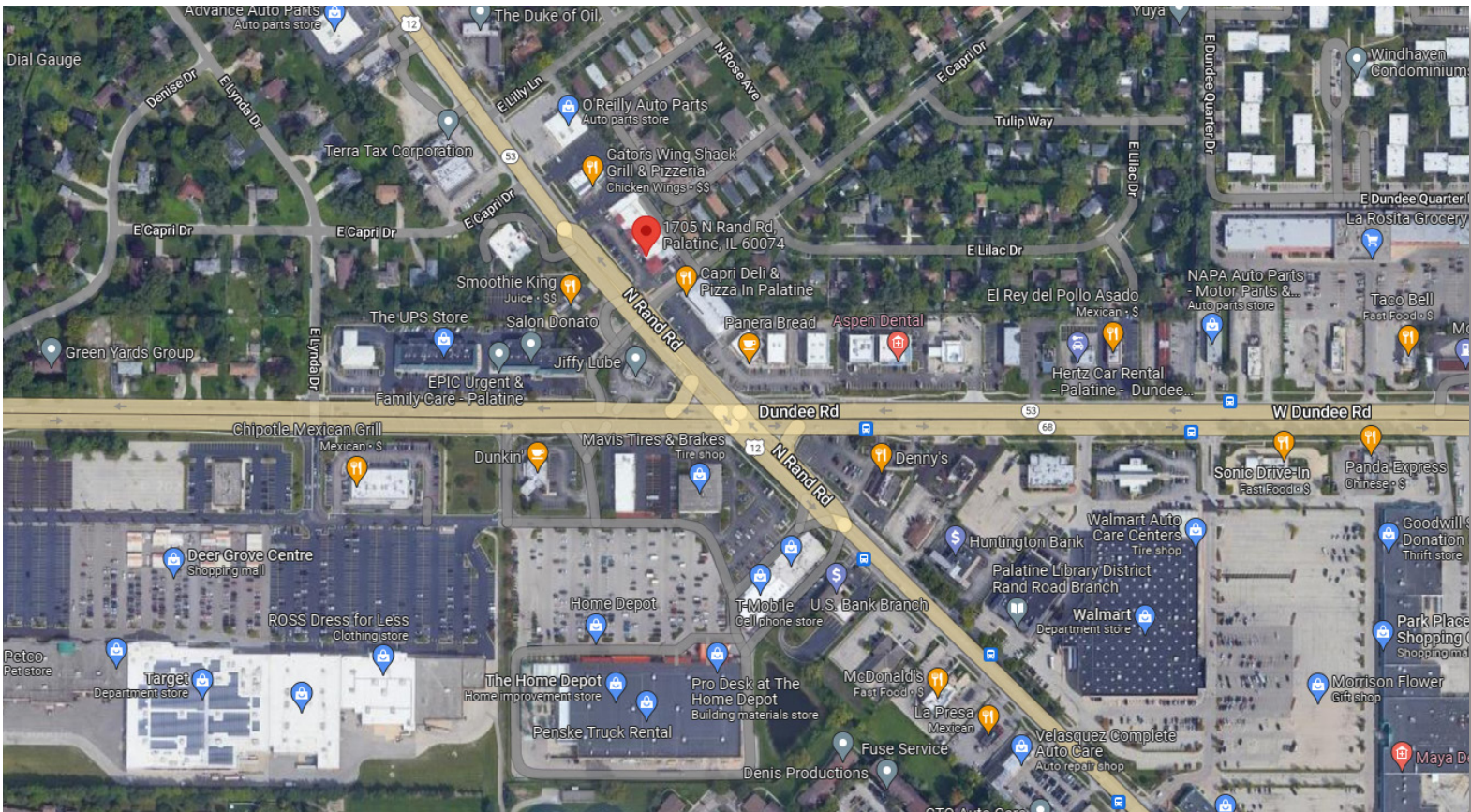
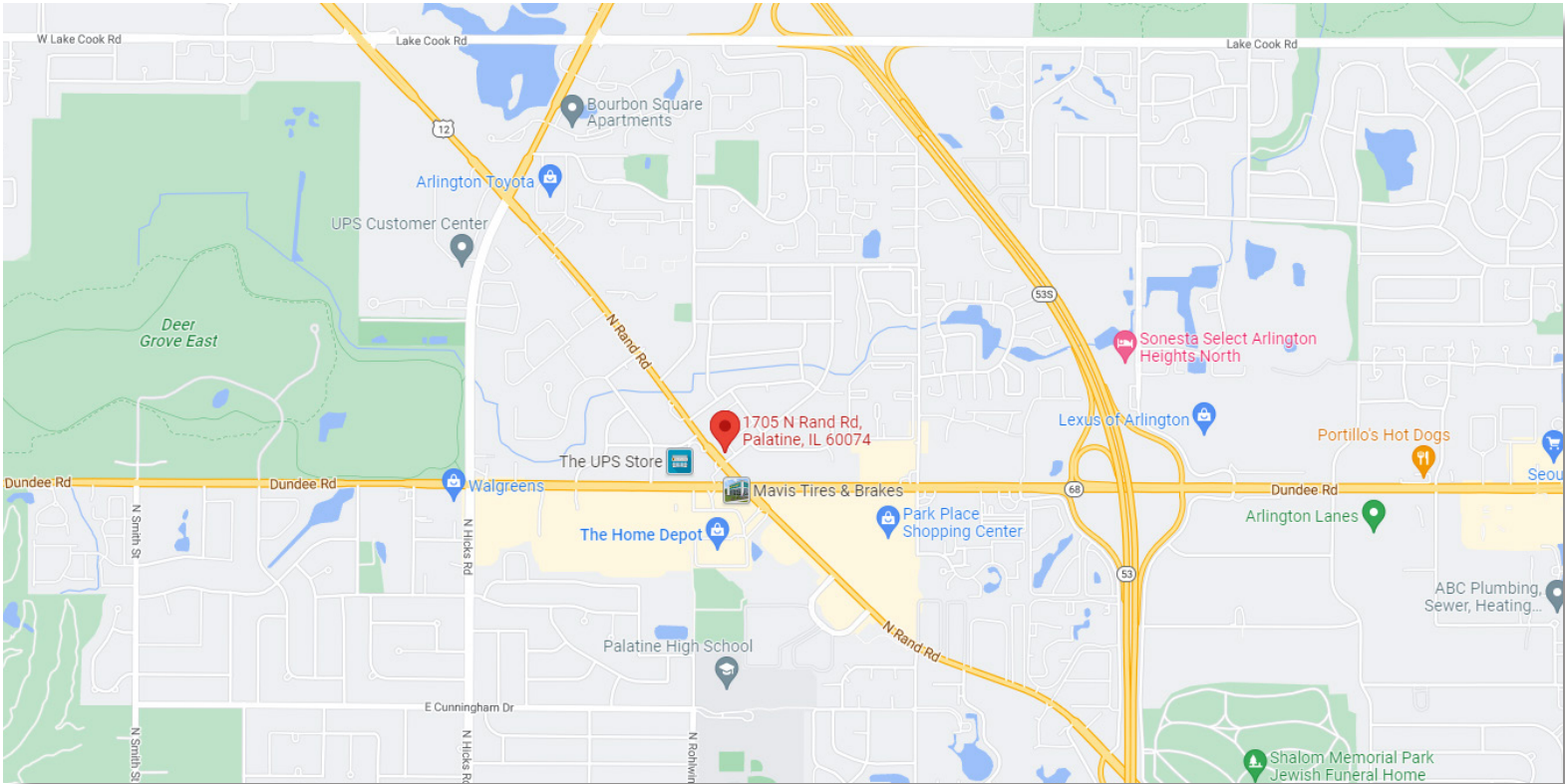
4811 Emerson Ave Suite 112, Palatine, IL



# RETAIL SPACE FOR LEASE

## 1703-1715 N. RAND ROAD PALATINE, IL

### AREA MAPS





# RETAIL SPACE FOR LEASE

1703-1715 N. RAND ROAD PALATINE, IL

## BUILDING PHOTOGRAPHS

