

# FOR SALE

6001 WEST GLENDALE AVENUE  
PHOENIX, ARIZONA 85301



## \$1,998,000 SALES PRICE

5,685 Square Feet Building  
2,400 Square Feet Canopy  
1,540 Square Feet Paint Booth & Baking Oven  
16,500 Square Feet Site  
8,000 Square Feet Concrete & Asphalt  
8 Drive-In Bays with Overhead Roll-Up Doors  
Fenced with Electric Gate  
FF&E \$200,000 (Ask for Itemized List)

Pylon Sign  
2 Rotary Compressors  
5 Car Lifts  
Security cameras  
Office, Showroom, Waiting Room,  
Breakroom, Office, (3) Restrooms  
2 Service Sections  
GC (General Commercial) Zoning

### Chad Nepl

Senior Vice President  
602.695.4909  
cnepl@citywidecre.com

### Vince Utucu

Sales & Leasing  
773.807.6674  
vince@citywidecre.com

citywide  
COMMERCIAL REAL ESTATE

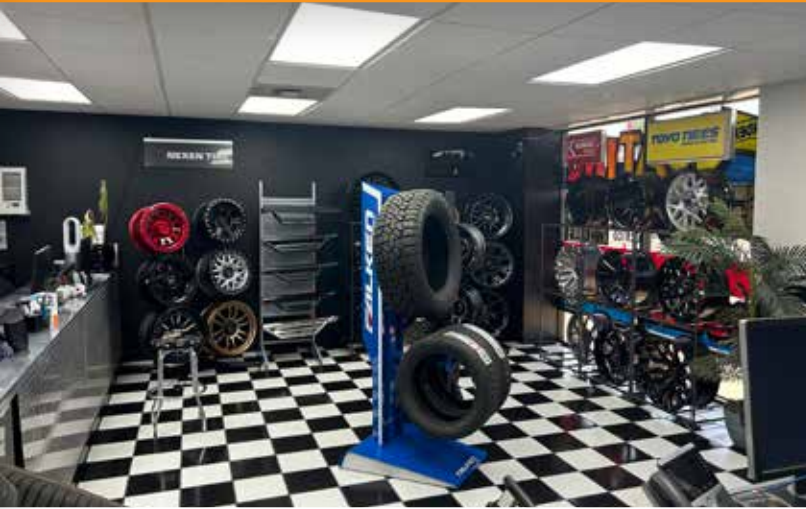
2122 EAST HIGHLAND AVENUE, SUITE 225 • PHOENIX, ARIZONA 85016 • 602.313.1000 • CITYWIDECRE.COM

All information furnished is from sources deemed reliable. No representation is made as to the accuracy thereof and it is submitted subject to errors, omissions, changes, or withdrawal without notice and to any special listings conditions, including the rate and manner of payment of commissions for particular offerings imposed by principals or agreed to by the company, the terms of which are available to interested principals or brokers. All dimensions are approximate. Owner and/or Broker make no representations expressed or implied as to the accuracy of floor plan/site plan dimensions.



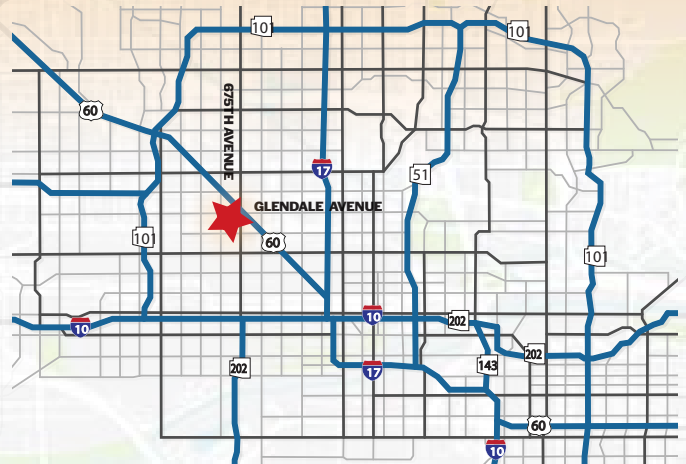
# FOR SALE

6001 WEST GLENDALE AVENUE  
PHOENIX, ARIZONA 85301



**Chad Nepl**  
Senior Vice President  
602.695.4909  
cnepl@citywidecre.com

**Vince Utucu**  
Sales & Leasing  
773.807.6674  
vince@citywidecre.com

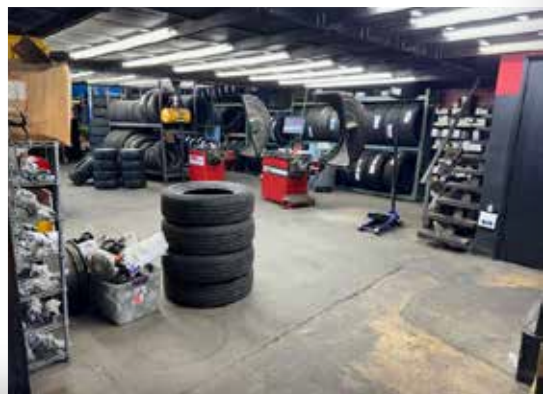


2122 EAST HIGHLAND AVENUE, SUITE 225 • PHOENIX, ARIZONA 85016 • 602.313.1000 • CITYWIDECRE.COM



# FOR SALE

6001 WEST GLENDALE AVENUE  
PHOENIX, ARIZONA 85301



## Chad Neppi

Senior Vice President

602.695.4909

cneppi@citywidecre.com

## Vince Utucu

Sales & Leasing

773.807.6674

vince@citywidecre.com

citywide  
COMMERCIAL REAL ESTATE

2122 EAST HIGHLAND AVENUE, SUITE 225 • PHOENIX, ARIZONA 85016 • 602.313.1000 • CITYWIDECRE.COM

# FOR SALE

6001 WEST GLENDALE AVENUE  
PHOENIX, ARIZONA 85301

## FF&E ITEMIZED LIST

Shop Tools

4 Post Lift for Alignment

Snap on Alignment Machine

Brake Lathe

15k lbs 2 Post Lift

3 9k lbs 2 Post Lift

90 Gallon Husky Air Compressor

2 - 60 Gallon Rotary Screw Compressor's

3 Bay Matco Tool Box ( red ) with Tools

2 Coats Euro Tire Changers

1 Coats Balancer

3 Rolling Tool Carts with Tools

Sand Blasting Cabinet

Powder Coating Booth

Powder Coating Oven

60 Gallon Air Compressor on Separate System for Powder Coating

Assorted Wheel Weights and Tire Repair Products

4 T Post Twist Stand ( red )

1 T Post Twist Stand ( blue )

3 Large Swap Coolers

1 Coats CHD 6330

1 Jet Lathe GHB-1340A

1 Bridgeport Mill

1 Chicago Pneumatic 30k Ton Press

3 - 20 Foot Conex Containers

### Chad Neppi

Senior Vice President

602.695.4909

cneppi@citywidecre.com

### Vince Utucu

Sales & Leasing

773.807.6674

vince@citywidecre.com



2122 EAST HIGHLAND AVENUE, SUITE 225 • PHOENIX, ARIZONA 85016 • 602.313.1000 • CITYWIDECRE.COM