

EAST INDUSTRIAL BAY

**LEE &
ASSOCIATES**
COMMERCIAL REAL ESTATE SERVICES



FOR LEASE ±26,100 SF INDUSTRIAL SPACE AT GREENVILLE BUSINESS CENTER

174 LAWRENCE DRIVE, SUITES I-K, LIVERMORE, CA 94551

LOCAL EXPERTISE. INTERNATIONAL REACH. WORLD CLASS.

LAS POSITAS BLVD.

LAWRENCE DRIVE

PRESTON AVENUE



Available

Leased





PROPERTY HIGHLIGHTS



±23,100 SF R&D/Warehouse Space
±3,000 SF Office Space



2 Dock High Doors 12' x 10'
2 Grade Level Doors 12' x 12'



24' Clear Height



Power: 1200 amps (Tenant to confirm)



50' x 60' Column Spacing



Individual recessed store-front entrance



Skylights throughout



Attractive Landscaping

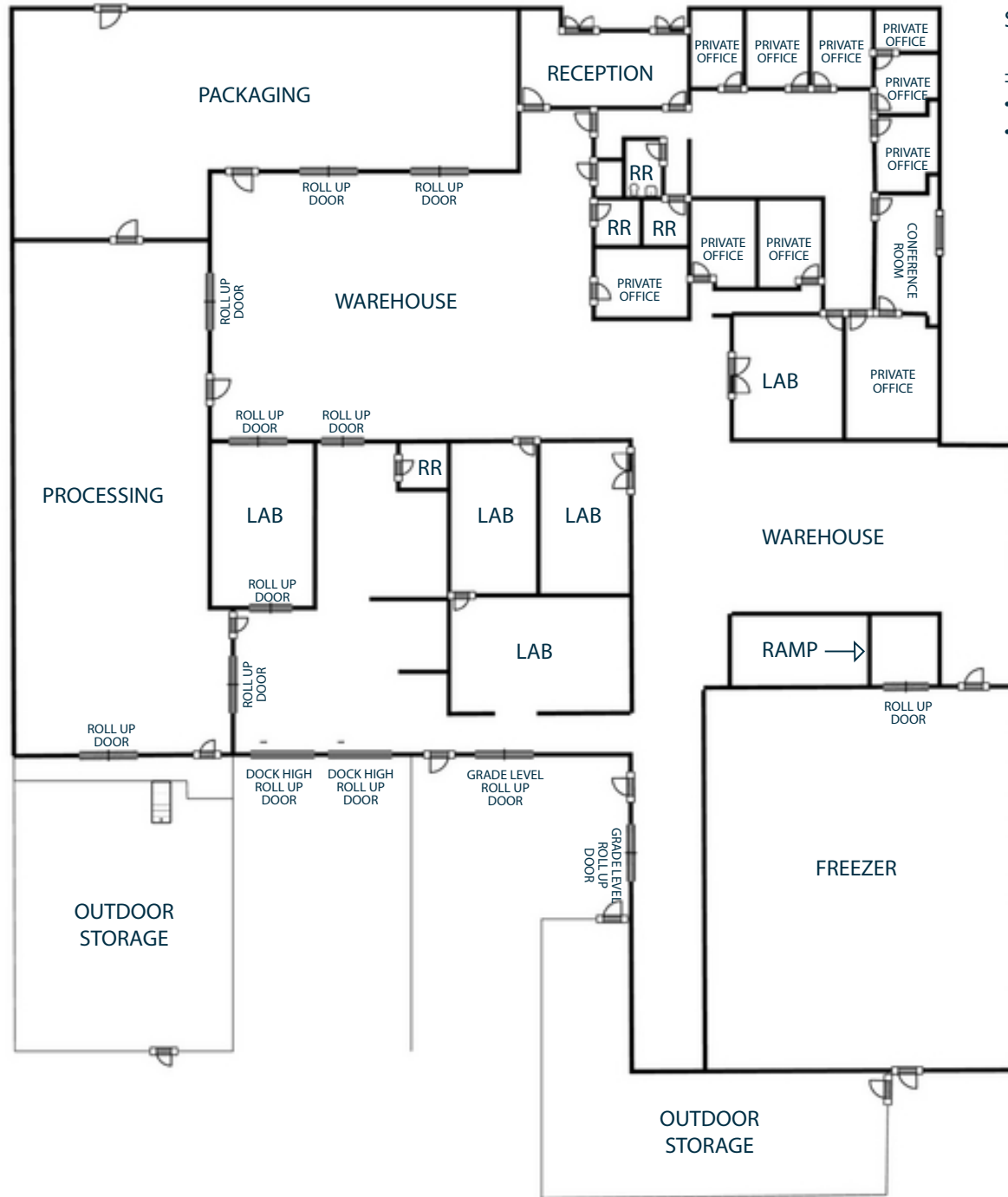


1.95/1,000 Parking Ratio



Excellent access to I-580

174
LAWRENCE DRIVE



SUITES I-K:

±26,100 SF Industrial Space:

- ±23,100 SF R&D Warehouse Space
- ±3,000 SF Office Space

* FLOORPLAN NOT TO SCALE

AERIAL MAP



FOR LEASE

±26,100 SF OF INDUSTRIAL SPACE

174 LAWRENCE DRIVE, SUITES I - K | LIVERMORE, CA 94551



Sean Offers, SIOR

Principal
soffers@lee-associates.com
925-737-4159
LIC NO 01858116



Blake Dicus

Principal
bdicus@lee-associates.com
925-737-4144
LIC NO 02074870