



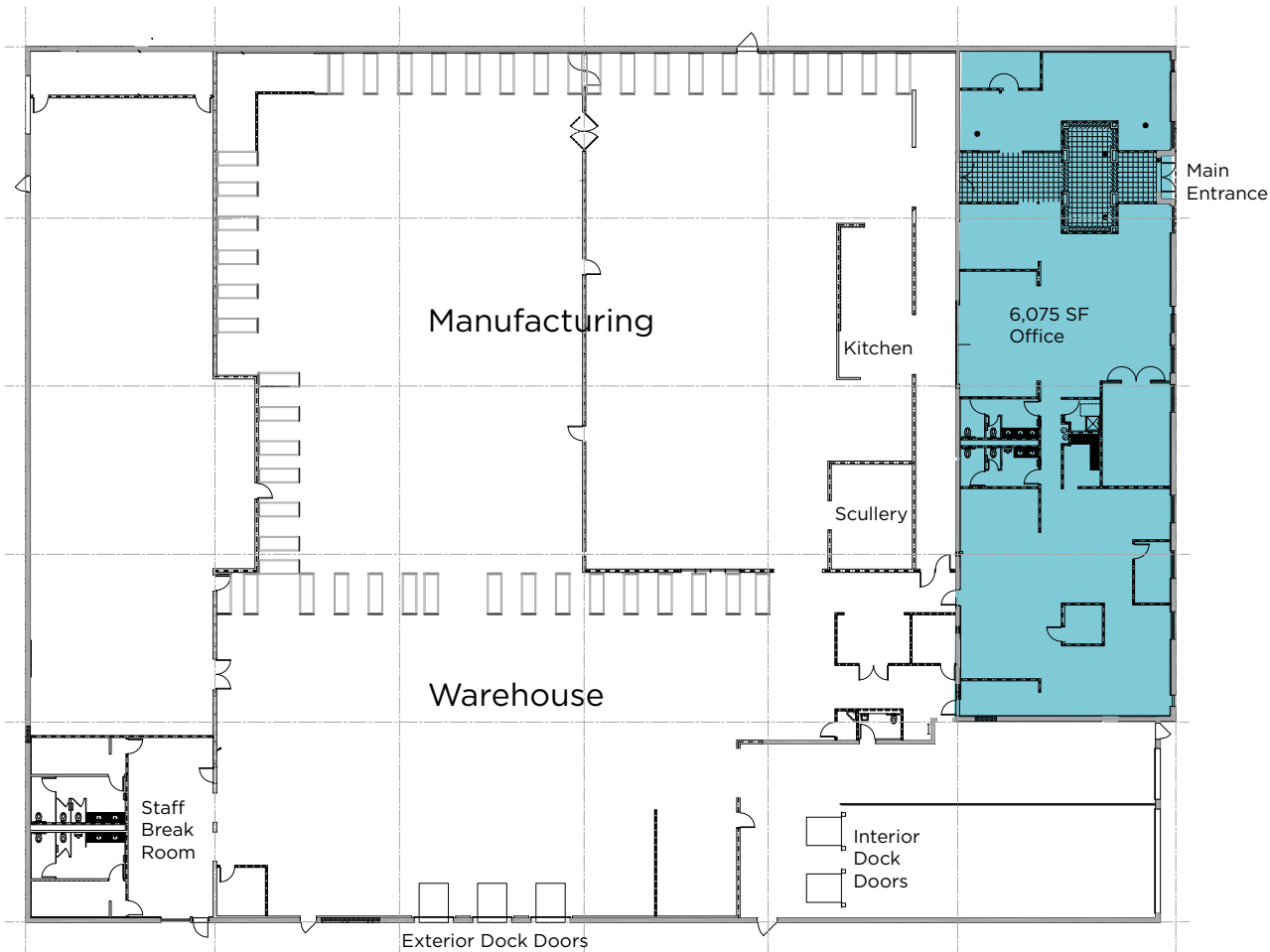
2900-2950
N OAKLEY,
CHICAGO



FOR SALE, LEASE OR REDEVELOPMENT OPPORTUNITY
42,367 SF BUILDING ON 2.29 ACRES
USDA FOOD PRODUCTION FACILITY



FLOOR PLAN



2900-2950
N OAKLEY,
CHICAGO

- USDA Food Production Facility
- Ceiling Fans in Shop
- Exterior Lighting in Yard
- Warehouse Can Accommodate a Crane

PROPERTY OVERVIEW

Building Size	42,367 SF
Office Size	6,075 SF
Year Built	1971
Site Size	2.29 acres
Zoning	M2-2

PROPERTY FEATURES

Clear Height	18'
Column Spacing	37' x 34'
Dock Doors	3 exterior, 2 interior
Drive-In Doors	1 (14'x10')
Levelers	3 exterior, 2 interior
Car Parking	62
Power	4,000 AMPS
Sprinklers	Wet
HVAC	Full A/C; Heating: Gas
RE Taxes (2025)	\$151,283



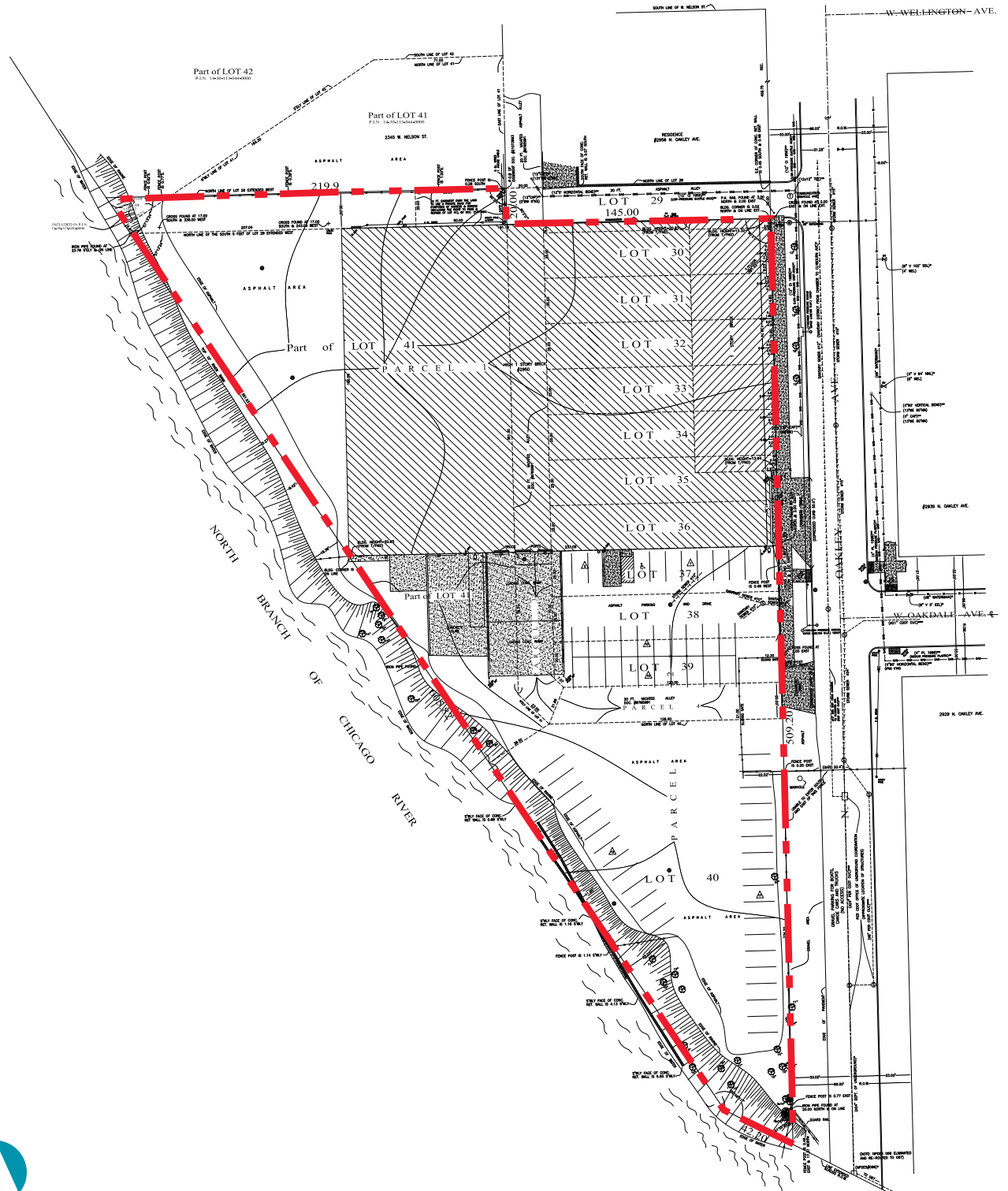
2900-2950 N OAKLEY, CHICAGO



2.29 ACRE SITE • 650 FT FRONTAGE ON CHICAGO RIVER

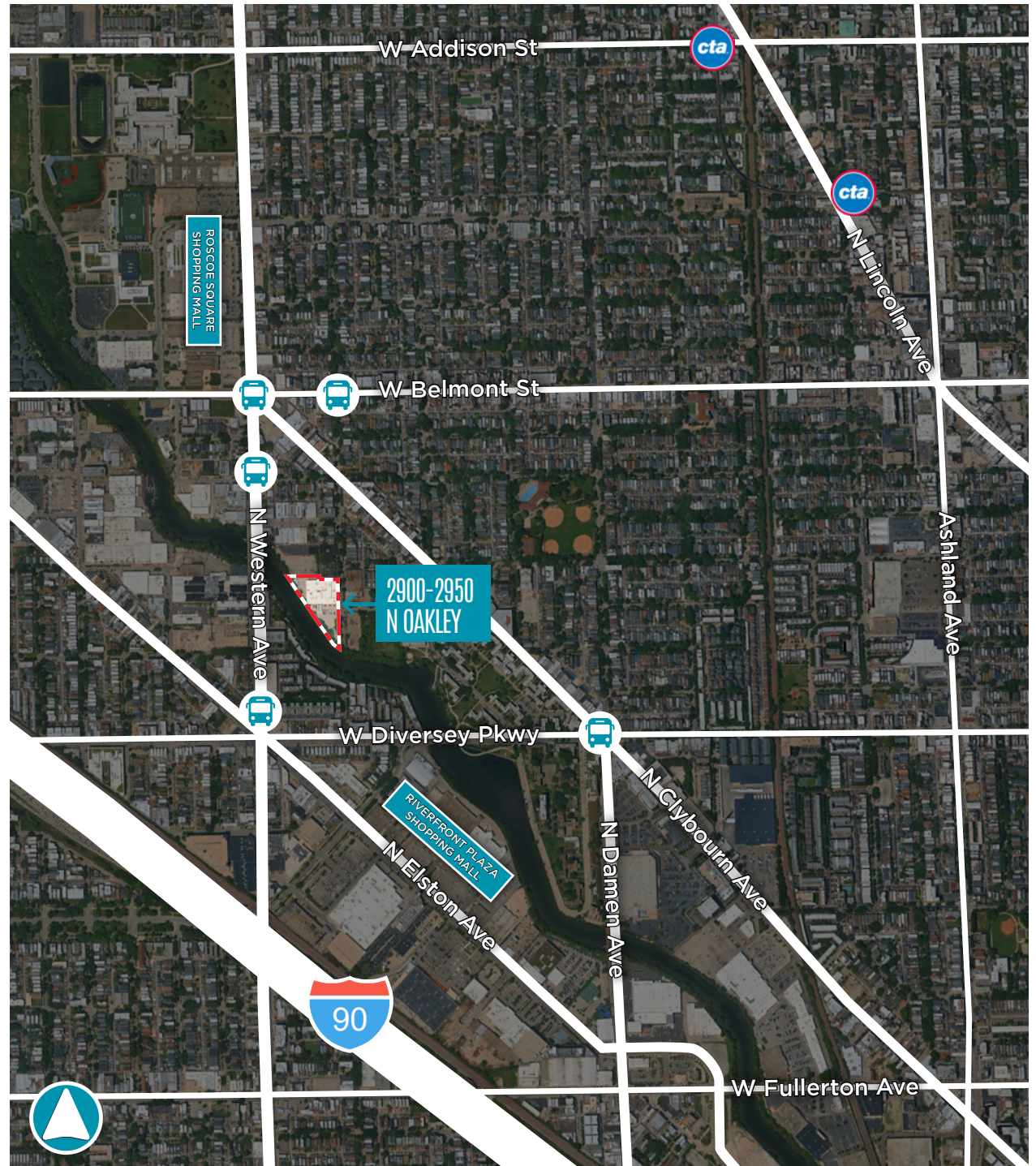
2900-2950 N OAKLEY, CHICAGO

SURVEY



2900-2950 N OAKLEY, CHICAGO

- Immediate Access to I-90
- Minutes to O'Hare or Midway
- Very Walkable
- Good Transit Score
- Ample Nearby Amenities





2900-2950
N OAKLEY,
CHICAGO

FOR MORE INFORMATION, CONTACT:

SEAN HENRICK, SIOR

Vice Chair

847 518 3215

sean.henrick@cushwake.com

RYAN KLINK

Managing Director

847 518 3211

ryan.klink@cushwake.com

STEVE AARONSON

Director

312 339 2220

steve.aaronson@cushwake.com



9500 W Bryn Mawr, Suite 600

Rosemont, IL 60018

cushmanwakefield.com

©2026 Cushman & Wakefield. All rights reserved. The information contained in this communication is strictly confidential. This information has been obtained from sources believed to be reliable but has not been verified. NO WARRANTY OR REPRESENTATION, EXPRESS OR IMPLIED, IS MADE AS TO THE CONDITION OF THE PROPERTY (OR PROPERTIES) REFERENCED HEREIN OR AS TO THE ACCURACY OR COMPLETENESS OF THE INFORMATION CONTAINED HEREIN, AND SAME IS SUBMITTED SUBJECT TO ERRORS, OMISSIONS, CHANGE OF PRICE, RENTAL OR OTHER CONDITIONS, WITHDRAWAL WITHOUT NOTICE, AND TO ANY SPECIAL LISTING CONDITIONS IMPOSED BY THE PROPERTY OWNER(S). ANY PROJECTIONS, OPINIONS OR ESTIMATES ARE SUBJECT TO UNCERTAINTY AND DO NOT SIGNIFY CURRENT OR FUTURE PROPERTY PERFORMANCE.