



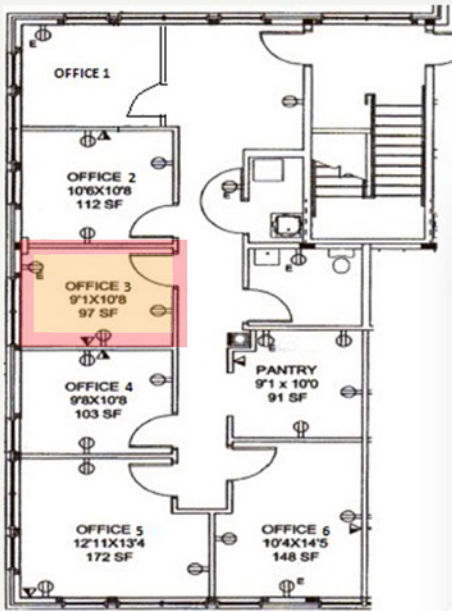
OFFICE SPACE FOR LEASE

44075 PIPELINE PLAZA

Ashburn, VA 20147

Suite 300

\$ 750/month



Coworking space in the heart of Data Center Alley, minutes from Dulles Toll Road, Route 7, Route 28, and Ashburn Metro. Close to One Loudoun with walkable amenities like Starbucks, restaurants, and banking. Internet, utilities, and beverage bar included; tenant provides furniture and phone service. Ample unassigned parking and a central location make this the perfect space for professionals seeking convenience and accessibility in a thriving business hub.



PATTY I BROWN, CCIM
PRESIDENT / PRINCIPAL BROKER

PIBROWN@MARATHONRGI.COM
(703) 402 2433
LICENSED IN VA | MD | D.C.