

25869 Kelly Rd, Unit 14

Roseville, MI

- 1,435 Square Feet Available
- Professionally Managed
- Located in Professional Office Building
- 3-Exam Medical Condo Unit
- Close Proximity to I-94

OFFICE BUILDING FOR SALE OR LEASE

FOR MORE INFORMATION:

Al Iafrate, SIOR
Senior Vice President
248.637.7791
MLcapitani@LMCap.com

248.637.9700 | LMCap.com

Information contained herein was obtained from sources deemed to be reliable but is not guaranteed. Subjects to prior sales, changes of price or withdrawal.



L. MASON CAPITANI

CORFAC INTERNATIONAL

CELEBRATING 60 YEARS

25869 Kelly Rd, Unit 14

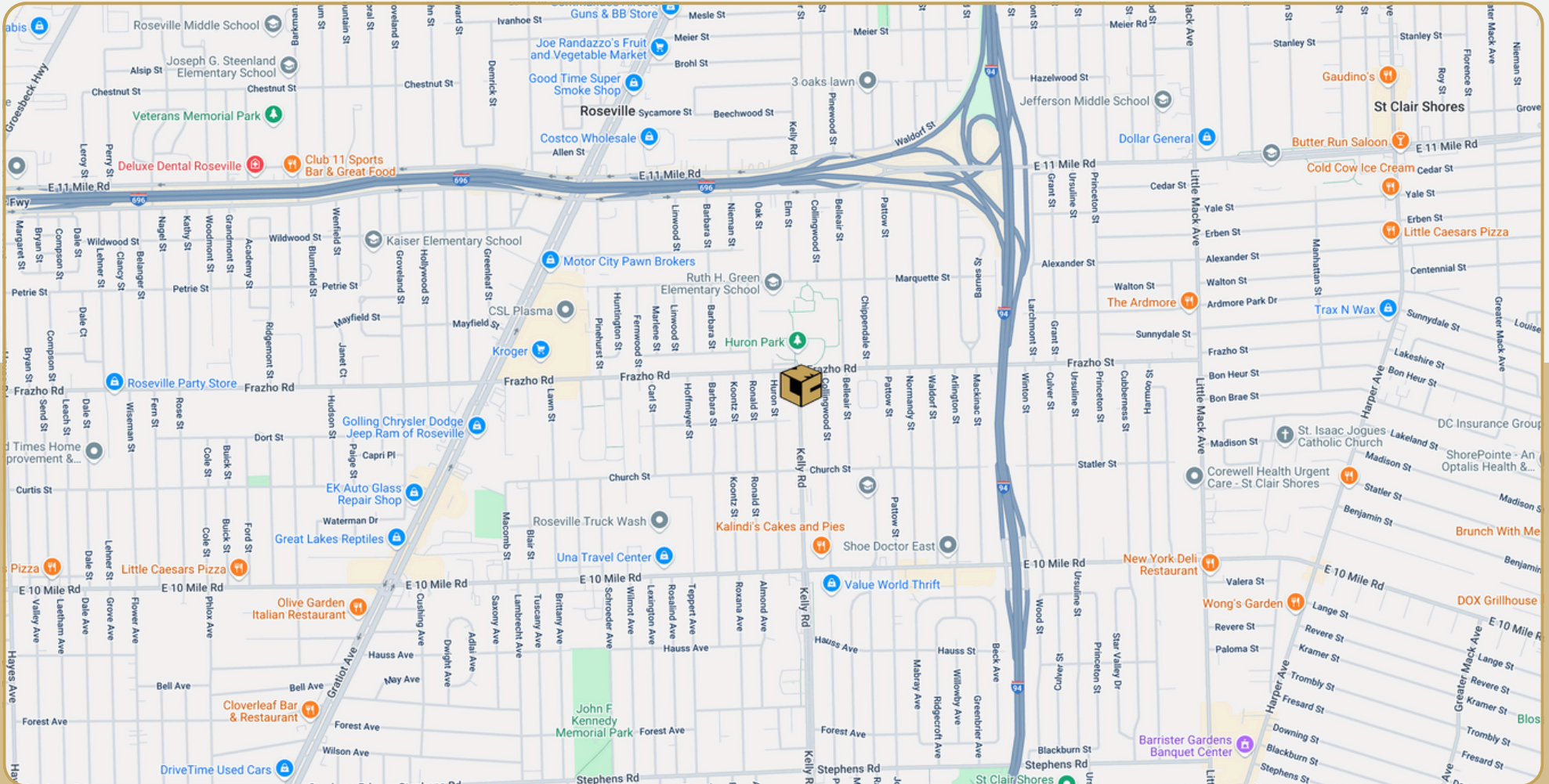
Roseville, MI



L. MASON CAPITANI

CORFAC INTERNATIONAL

CELEBRATING 60 YEARS



248.637.9700 | LMCap.com

Information contained herein was obtained from sources deemed to be reliable but is not guaranteed. Subjects to prior sales, changes of price or withdrawal.

25869 Kelly Rd, Unit 14

Roseville, MI



L. MASON CAPITANI

CORFAC INTERNATIONAL

CELEBRATING 60 YEARS

Details:

Location Description: 10 Mile and Kelly

Building Type: Medical

Class: B

Zoning: O-1

Floors: 1

Year Built: 1985

Year Renovated: 1995

Gross SF: 1,435 SF

Total Rentable SF: 1,435 SF

Available SF: 1,435 SF

Acres: 3.40

Multitenant: Yes

Parcel ID: -

Property Description: Professionally managed medical/office building. 3-exam medical condo unit for sale or lease.

Economic:

Sale Price: \$129,500.00

Min/Max Rental Rate: \$21.50/SF

Rental Terms: + Utilities

Annual Escalations: \$0.50/SF

Load Factor: 10.0%

Occupancy: Immediate

Parking: Excellent

Partition Allowance: Negotiable

Signage: Monument

Status: Existing

Operating Expenses: -

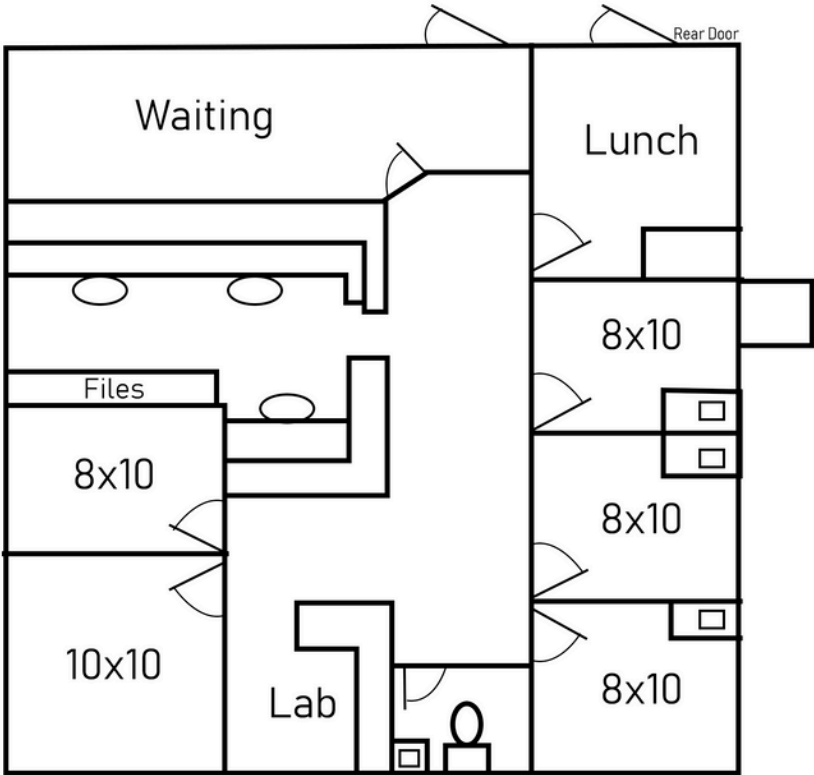
248.637.9700 | LMCap.com

Information contained herein was obtained from sources deemed to be reliable but is not guaranteed. Subjects to prior sales, changes of price or withdrawal.

25869 Kelly Rd, Unit 14

Roseville, MI

Unit 14 Floor Plan



Suite Number	Square Footage
14	1,435