

# FOR LEASE

RETAIL/OFFICE SPACE IN EASLEY'S CAROLINA CENTER



REEDY COMMERCIAL



**838 POWDERSVILLE RD | EASLEY, SC 29624**

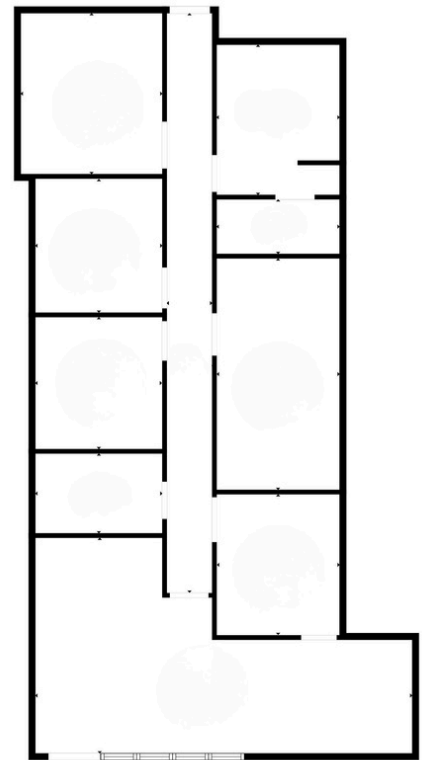
## PROPERTY DESCRIPTION

- Pickens TMS#: 5038-06-38-5855
- Traffic Counts - 9,800 VPD
- Road Frontage:  $\pm 675$  on Powdersville Rd.
- Located  $\pm 0.8$  miles from Hwy 123
- Located  $\pm 2.4$  miles from Hwy 153
- Highly visible and easily accessible on Powdersville Rd.
- Co-Tenants Include:
  - ATI Physical Therapy, Custom Med Pharmacy, All-on-X, Powdersville Smiles Dentistry, Ascend Chiropractic

## OFFERING SUMMARY

**Availability:**  $\pm 1,400$  sq ft

**Lease Rate:** \$14/sqft (NNN)



**Bennett Mahon**

864.683.7244

[bmahon@reedypg.com](mailto:bmahon@reedypg.com)

**Haley Stephens**

864.419.5966

[hstephens@reedypg.com](mailto:hstephens@reedypg.com)

**REEDY PROPERTY GROUP**

301 N. Main Street, Suite 501

Greenville, SC 29601

[reedyccommercial.com](http://reedyccommercial.com)



**838 Powdersville Rd**  
**Easley, SC 29642**



**Bennett Mahon**

864.683.7244

[bmahon@reedypg.com](mailto:bmahon@reedypg.com)

**Haley Stephens**

864.419.5966

[hstephens@reedypg.com](mailto:hstephens@reedypg.com)

**REEDY PROPERTY GROUP**

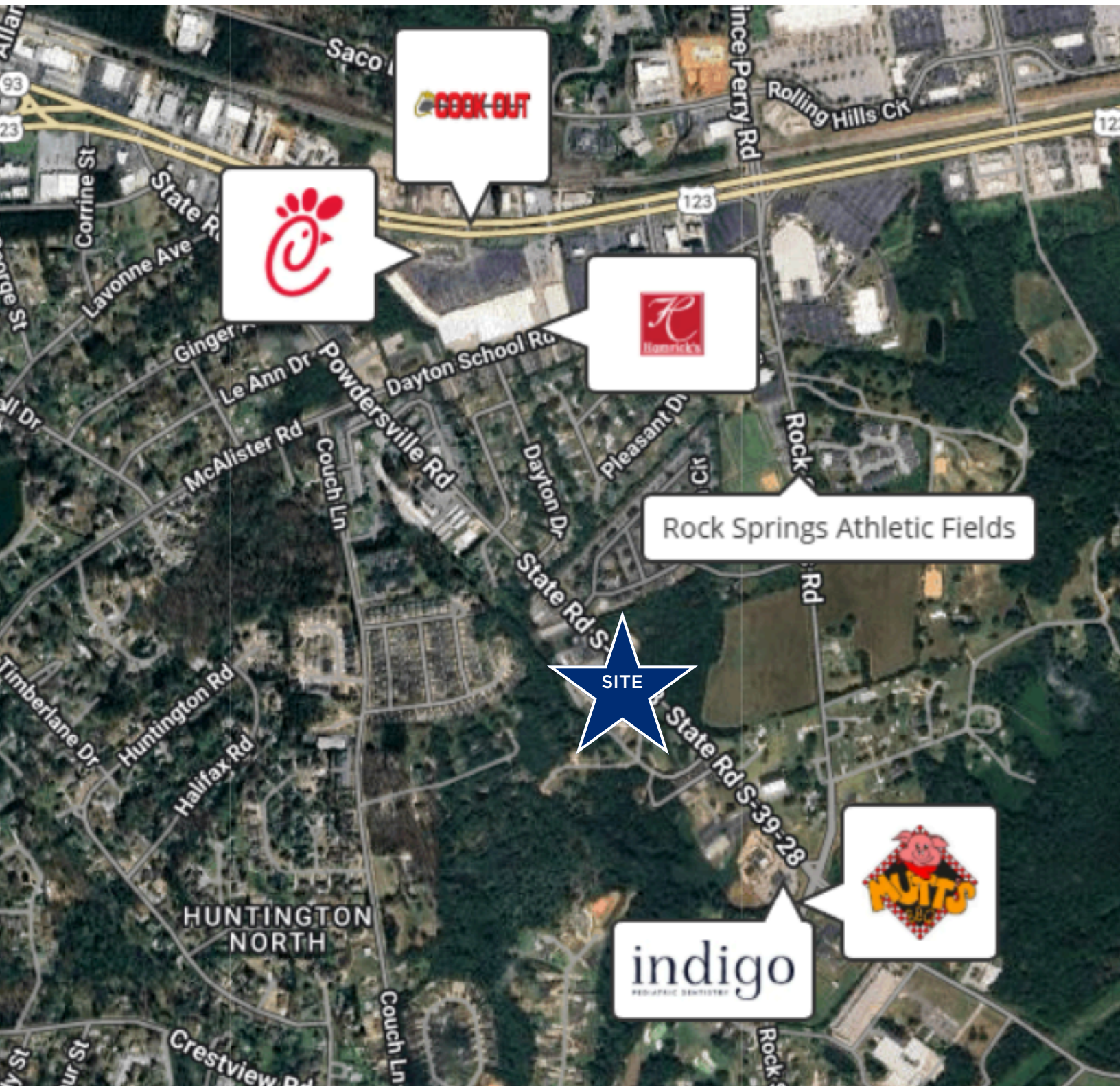
301 N. Main Street, Suite 501

Greenville, SC 29601

[reedyccommercial.com](http://reedyccommercial.com)



# 838 Powdersville Rd Easley, SC 29642



**Bennett Mahon**

864.683.7244

[bmahon@reedypg.com](mailto:bmahon@reedypg.com)

**Haley Stephens**

864.419.5966

[hstephens@reedypg.com](mailto:hstephens@reedypg.com)

**REEDY PROPERTY GROUP**

301 N. Main Street, Suite 501

Greenville, SC 29601

[reedyccommercial.com](http://reedyccommercial.com)