



**1102 E JOPPA ROAD
TOWSON, MARYLAND**

High Visibility Office/Medical Space For Lease



MASON POPHAM

mason.popham@thomas-park.com

www.thomas-park.com

410-280-0220

1102 E JOPPA ROAD
TOWSON, MARYLAND



FOR LEASE

Easy Access Location

Perfect office space for medical professionals, psychiatrists, lawyers, accountants, salons, and other services. Great location with direct frontage on E Joppa Road with monument signage opportunity. The building is surrounded by major shopping centers and just a few minutes from 695. Excellent Conditions.



THOMAS PARK COMMERCIAL
1906 Towne Centre Blvd. Suite 270
Annapolis, Maryland 21401
www.thomas-park.com

MASON POPHAM
mason.popham@thomas-park.com
www.thomas-park.com
410-280-0220

\$19.00

PSF LEASE RATE

2,550

SQUARE FEET

4.84 / 1,000

PARKING RATIO

RO

ZONING

1102 E JOPPA ROAD
TOWSON, MARYLAND

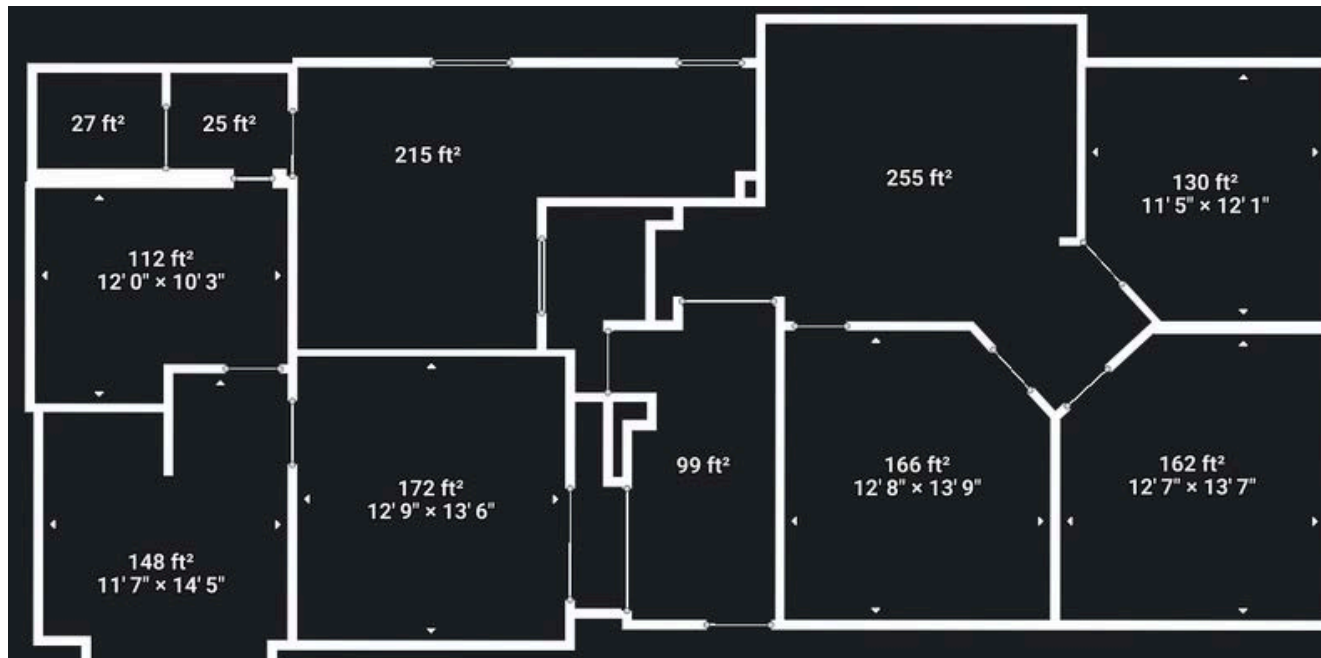
FLOOR PLAN

Versatile 2-story floor plan that consists of 2,550 sqft with a full kitchenette, employee lounge, 7 private offices, a large storage area, a reception area and 3 private bathrooms.

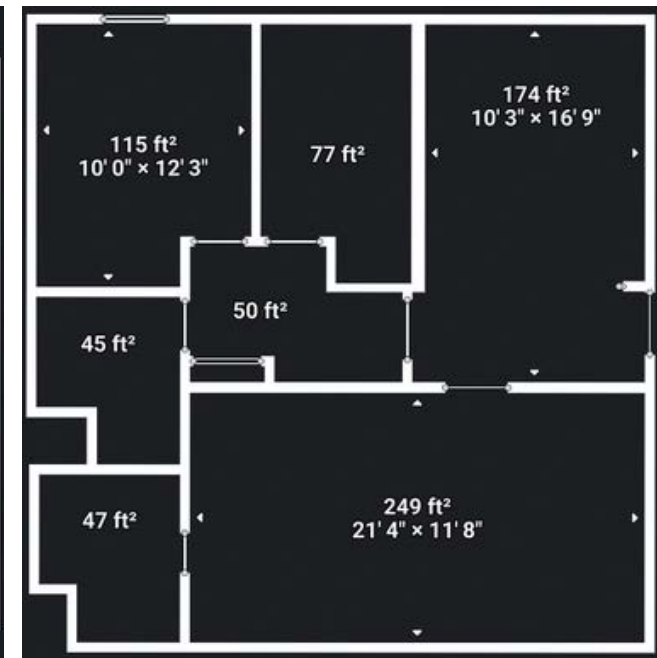
CLICK IMAGE FOR
VIRTUAL 3D TOUR



FIRST FLOOR



SECOND FLOOR



THOMAS PARK COMMERCIAL
1906 Towne Centre Blvd. Suite 270
Annapolis, Maryland 21401
www.thomas-park.com

MASON POPHAM
mason.popham@thomas-park.com
www.thomas-park.com
410-280-0220

**1102 E JOPPA ROAD
TOWSON, MARYLAND**

**VERSATILE
DIRECT-ENTRY
OFFICE SPACE**

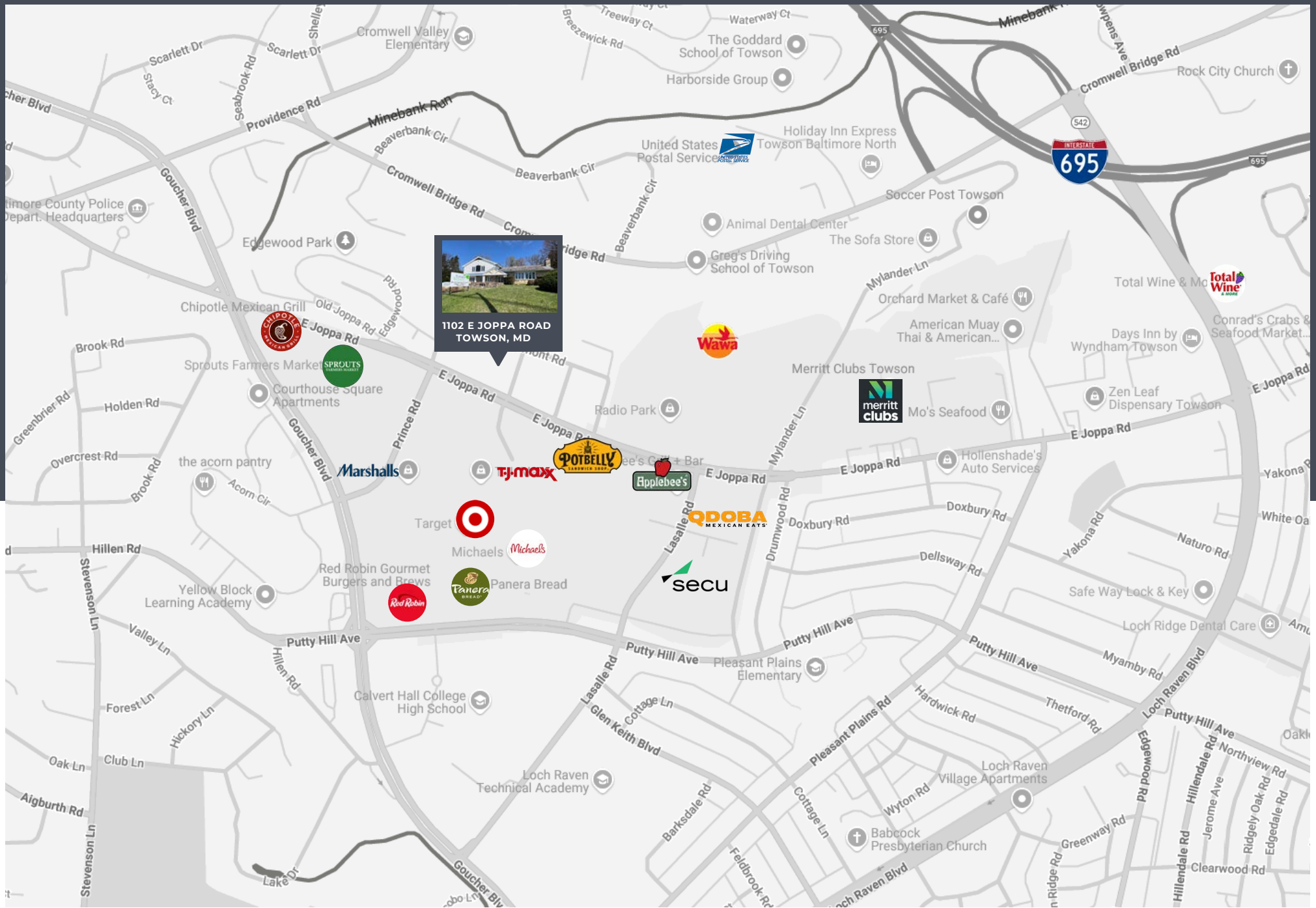
The space offers a bright, adaptable space for medical, legal, or professional use. With natural light and a functional layout, it's ideal for businesses seeking a prime Towson location.

Take advantage of the easy access to 695 and other major arteries and work in direct proximity to major retailers!



THOMAS PARK COMMERCIAL
1906 Towne Centre Blvd. Suite 270
Annapolis, Maryland 21401
www.thomas-park.com

MASON POPHAM
mason.popham@thomas-park.com
www.thomas-park.com
410-280-0220



THOMAS PARK COMMERCIAL
 1906 Towne Centre Blvd. Suite 270
 Annapolis, Maryland 21401
www.thomas-park.com

MASON POPHAM
mason.popham@thomas-park.com
www.thomas-park.com
 410-280-0220



YOUR COMMERCIAL REAL ESTATE PARTNER

Thomas Park is a full-service commercial real estate firm offering alternative investment strategies and third-party commercial real estate services.



MASON POPHAM

mason.popham@thomas-park.com

www.thomas-park.com

410-280-0220



THOMAS PARK COMMERCIAL

Thomas Park Commercial specializes in leasing and investment brokerage across all commercial asset classes throughout Maryland.



THOMAS PARK INVESTMENTS

TPI is one of the fastest growing private equity real estate investment firms on the East Coast focused exclusively on healthcare real estate.



THOMAS PARK MANAGEMENT

TPM is a best in class property management firm with a 30+ year track record in the commercial real estate industry.



THOMAS PARK DESIGN

TPD is an innovative interior design firm specializing in healthcare, medical office, commercial office, and retail.



THOMAS PARK CONSTRUCTION

TPC focuses on commercial construction within the healthcare, retail, office and industrial sectors.