

5103 West Adams: Retail Spaces Available

West Adams
BOULEVARD

5,000 SF

The Jayne is a newly constructed six-story, mixed-use multifamily residence, consisting of 69 residential units and 5,000 SF of ground-floor retail. The retail space offers a flexible floor plan divided into two spaces. Located in the West Adams District, the property is in close proximity of the busy intersection, La Brea Avenue and Adams Boulevard.

AT A PROMINENT CORNER
OF ADAMS BLVD AND
MANSFIELD AVE

EXCELLENT I-10 FREEWAY
VISIBILITY

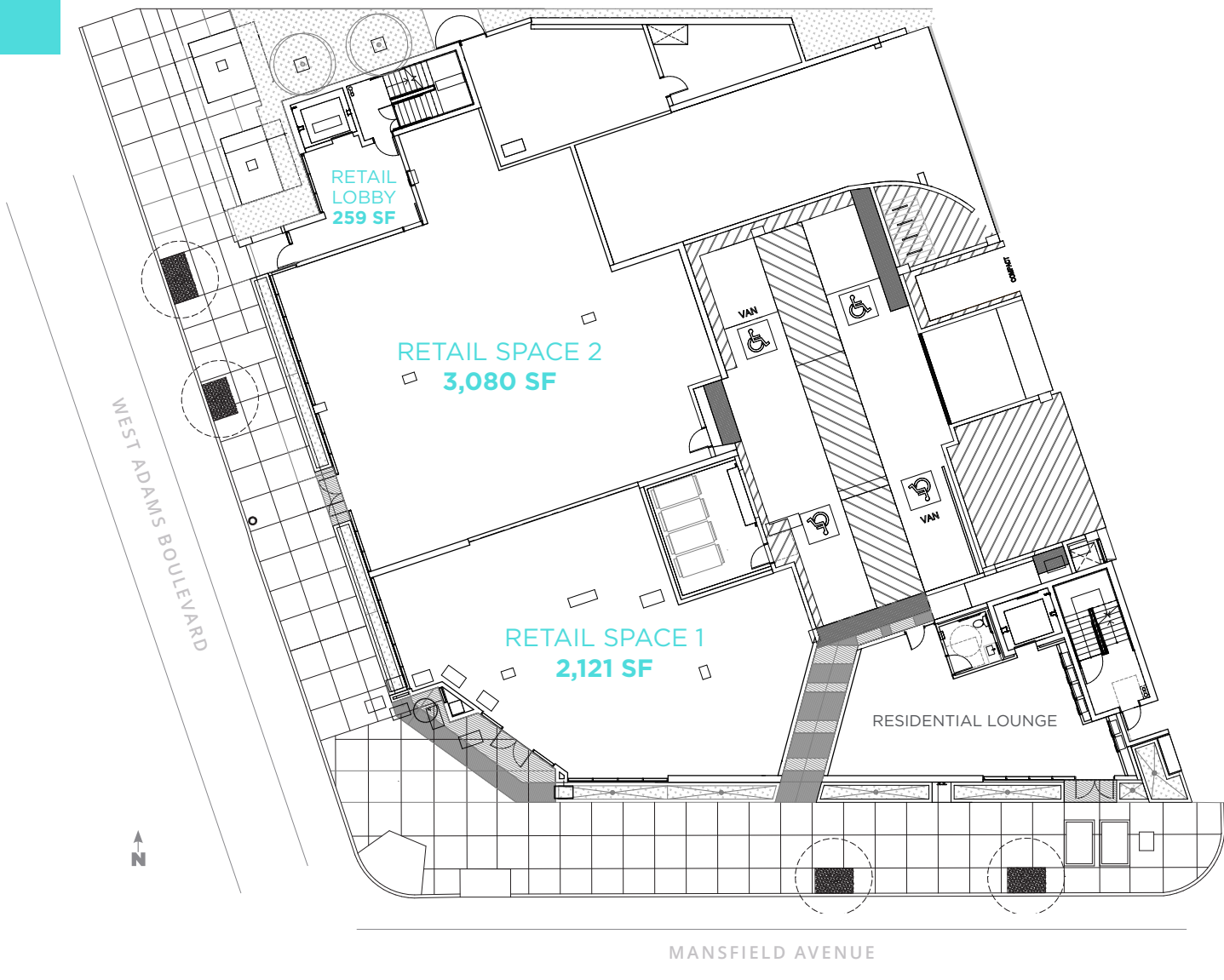
CAN BE DEMISED TO FIT THE
TENANT'S REQUIREMENTS

WEST ADAMS NEIGHBORS:
THE BAR AT JOHNNY'S, JOHNNY'S
PASTRAMI, CHULITA, DELICIOUS
PIZZA, ALSACE HOTEL,
TARTINE, THE ROOSTER,
KNEELAND CO RARITIES,
THE GATHERING SPOT LA



5103 West Adams: Retail Spaces Available

Floor Plan



FOR RETAIL LEASING INFORMATION:

DAVID ATTAR #01836260
323.860.4939 | dattar@cimgroup.com

SADÉ HOLZ #01962244
323.860.7409 | sholz@cimgroup.com

LACI JACKSON RAVINA #02091088
510.350.3130 | ljacksonravina@cimgroup.com

SHIRELLE KASHANIAN #02154840
skashanian@cimgroup.com

West Adams Neighborhood



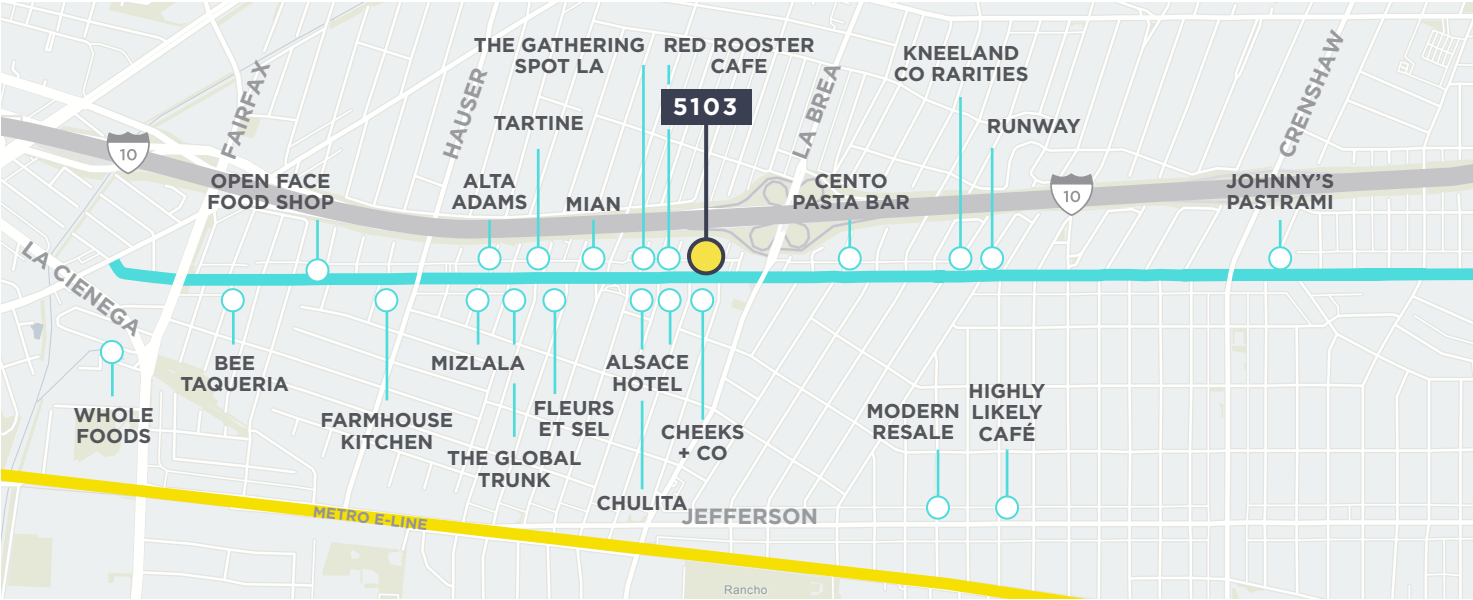
MIZLALA



ALSACE HOTEL



JOHNNY'S



NOTABLE WEST ADAMS RETAILERS AND COMPANIES



\$786,909
MEDIAN HOME VALUE

\$390M+
CONSUMER SPENDING
WITHIN A ONE MILE RADIUS

1.5M
WEEKLY VISITS
TO WEST ADAMS

536K+
TRADE AREA POPULATION

24K+
DAILY TRAFFIC COUNT FROM
ADAMS BOULEVARD