

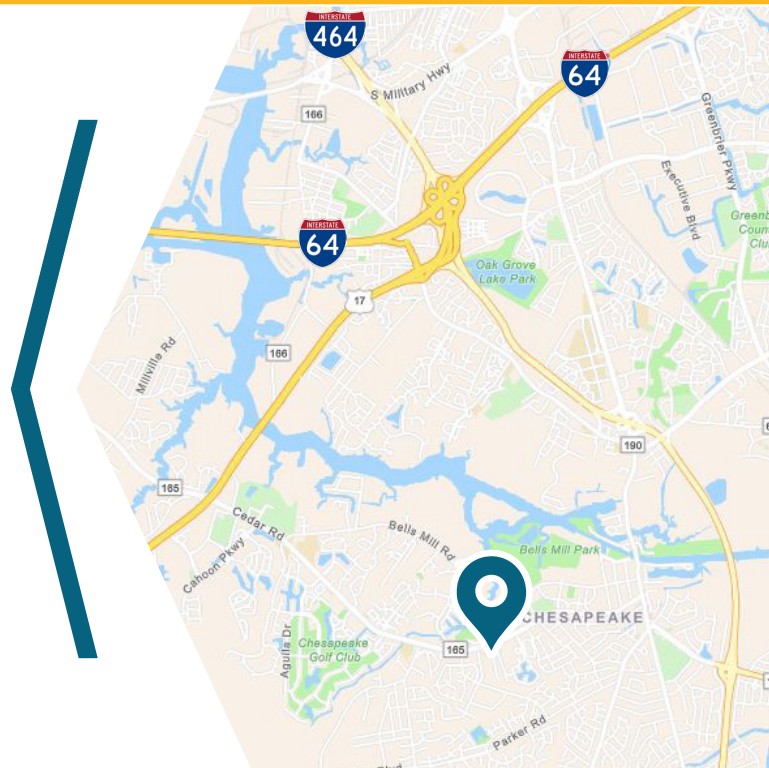
OFFICE FOR LEASE

649 Cedar Road Chesapeake, VA 23322



ABOUT PROPERTY

- SUITE 100 - 2,123 RSF
- Immediate availability
- New construction: 2022
- Second generation space
- Site: 1.06 AC
- Building Size: 8,066 SF
- Zoning: O-I (Office & Industrial)
- Monument signage available
- **LEASE TERMS: CONTACT AGENT**



For more information:
ROB SULT, CCIM
757.640.8205
RobSult@HarveyLindsay.com

999 Waterside Drive • Suite 1400
Norfolk, Virginia 23510
757-640-8700
www.HarveyLindsay.com

HARVEY LINDSAY
COMMERCIAL REAL ESTATE

649 Cedar Road, Chesapeake, VA 23322

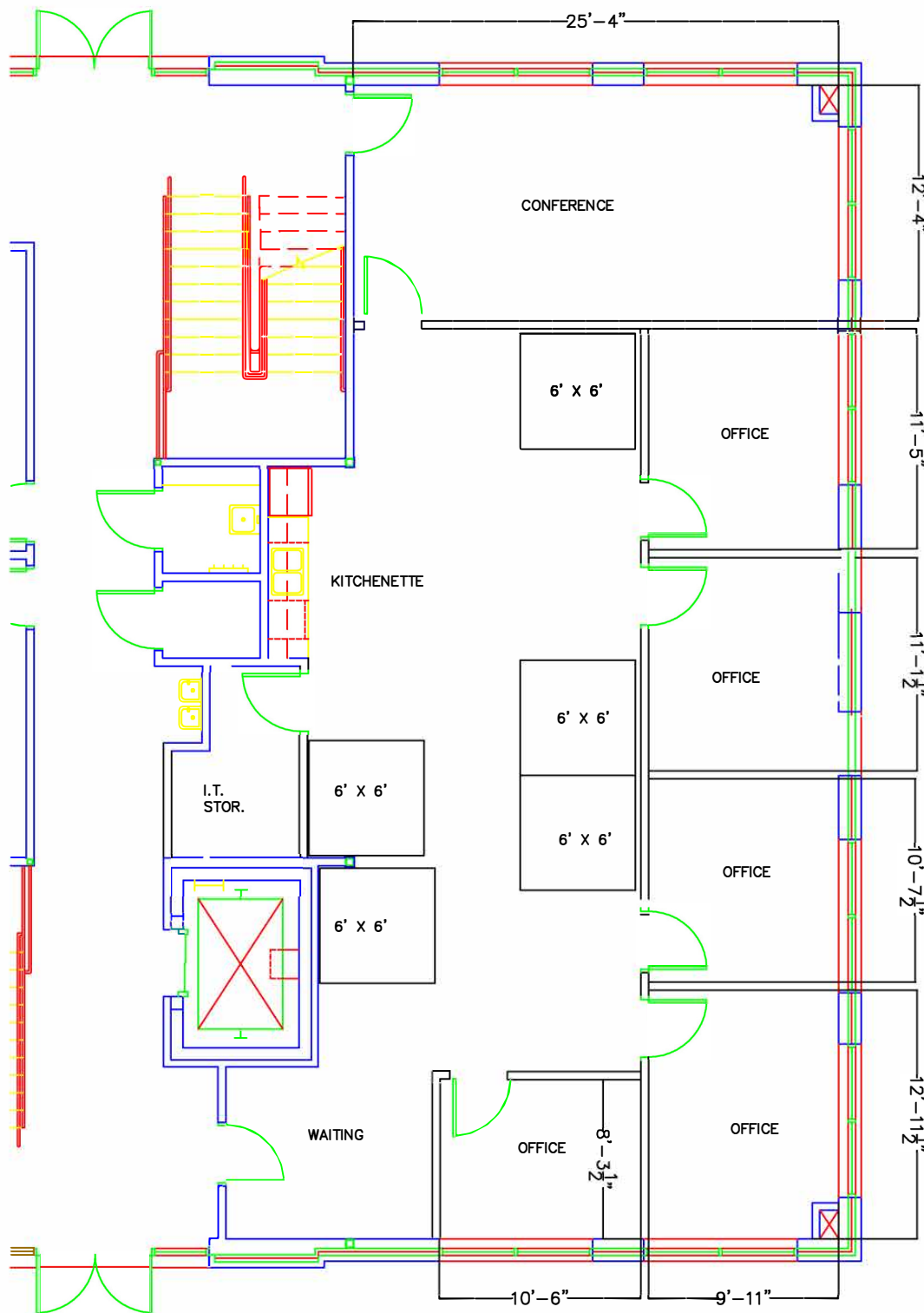
SITE LOCATION



For more information:
ROB SULT, CCIM
757.640.8205
RobSult@HarveyLindsay.com

999 Waterside Drive • Suite 1400
Norfolk, Virginia 23510
757-640-8700
www.HarveyLindsay.com

HARVEY LINDSAY
COMMERCIAL REAL ESTATE



PRELIMINARY PLAN

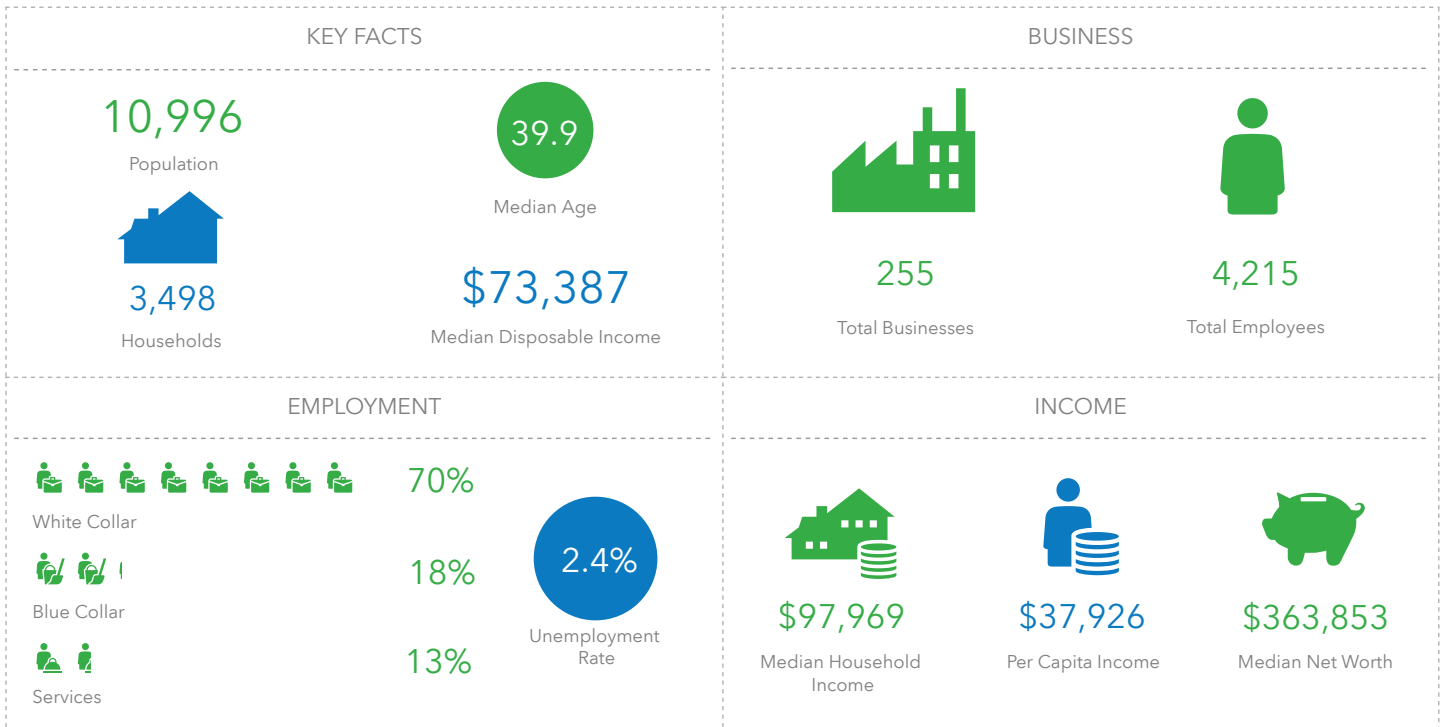
649 CEDAR ROAD, CHESAPEAKE, VIRGINIA
SUITE 100 & 102

For more information:
ROB SULT, CCIM
757.640.8205
RobSult@HarveyLindsay.com

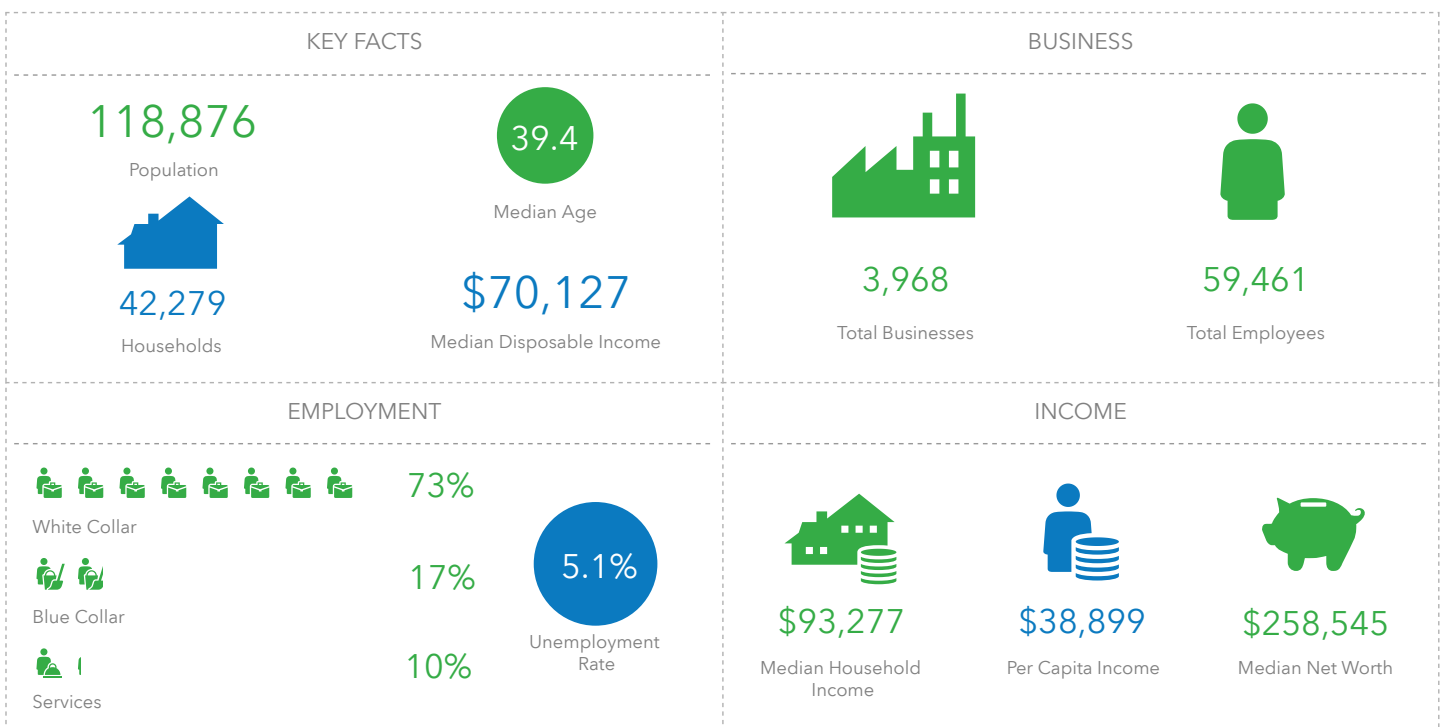
999 Waterside Drive • Suite 1400
Norfolk, Virginia 23510
757-640-8700
www.HarveyLindsay.com

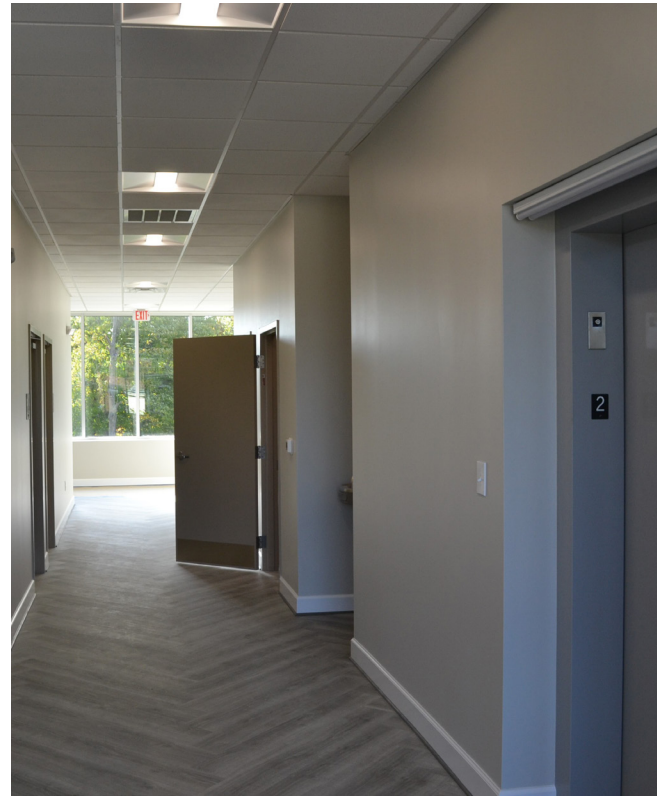
HARVEY LINDSAY
COMMERCIAL REAL ESTATE

1 MILE



5 MILES





For more information:
ROB SULT, CCIM
757.640.8205
RobSult@HarveyLindsay.com

999 Waterside Drive • Suite 1400
Norfolk, Virginia 23510
757-640-8700
www.HarveyLindsay.com

HARVEY LINDSAY
COMMERCIAL REAL ESTATE