

SHEET INDEX:

- G-1 TITLE SHEET
- G-2 GENERAL NOTES
- C-1A DRAINAGE PLAN
- C-1B DRAINAGE PLAN
- C-1C DRAINAGE PLAN
- C-2A DRAINAGE DETAILS
- C-2B CROSS SECTION
- C-3A UTILITY PLAN
- C-3B UTILITY PLAN
- C-3C UTILITY PLAN
- C-4 UTILITY DETAILS
- C-5 UTILITY DETAILS
- C-6 LIFT STATION DETAILS
- C-7 STORMWATER POLLUTION PREVENTION PLAN
- C-8 STORMWATER POLLUTION PREVENTION DETAILS
- C-9 OFF-SITE IMPROVEMENTS

SANCTUARY COVE
PRELIMINARY P.U.D.

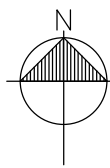
250 ROUSE ROAD
FT. PIERCE, FL 34949

ST LUCIE COUNTY, FLORIDA
APRIL 2023

JURISDICTIONAL PERMITS:
ST. LUCIE COUNTY MAJOR SITE PLAN
ST. LUCIE COUNTY STORMWATER PERMIT
ST. LUCIE WASTEWATER PERMIT
ST. LUCIE COUNTY LAND CLEARING PERMIT
ST. LUCIE RIGHT-OF-WAY PERMIT
SOUTH FLORIDA WATER MANAGEMENT 10-2 CERTIFICATION
FLORIDA DEPARTMENT OF TRANSPORTATION DRIVEWAY PERMIT
FLORIDA DEPARTMENT OF TRANSPORTATION DRAINAGE PERMIT



LOCATION MAP
SCALE: N.T.S

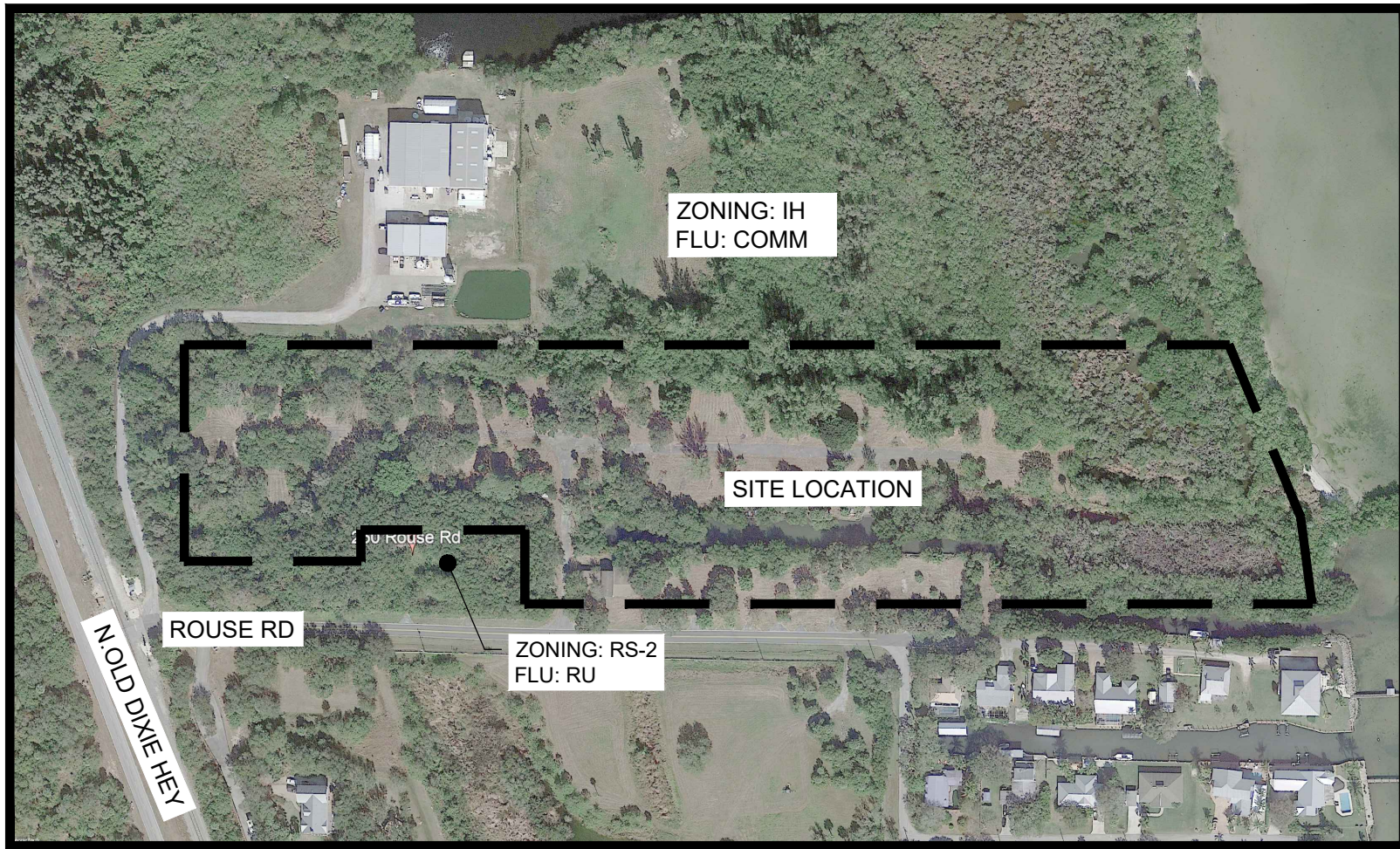


OWNER
ROUSE FORT PIERCE, LLC.
211 CAROLINA ST
CAPE CANAVERAL, FL 32920

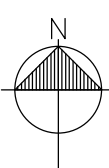
ENGINEER
Mills, Short & Associates

700 22ND PLACE, STE. 2C/2D
VERO BEACH, FLORIDA 32960
PHONE: 772.226.7282

LAND PLANNER &
LANDSCAPE ARCHITECT
INTEGRATED PERSPECTIVES
PLANNING & LANDSCAPE ARCHITECTURE
PHONE 561-623-2342



VICINITY MAP
SCALE: N.T.S



Mills, Short & Associates
WEBSITE: www.MillsShortAssociates.com
PHONE: 772.226.7282
C.A. #: 30689
700 22nd Place, Suite 2C/2D
Vero Beach, Florida 32960

SEAL

ISSUE	DATE	COMMENTS

SANCTUARY COVE 250 ROUSE FORT PIERCE, FL 34946		SCALE: SEE SHEET	APPROVED BY JWM	CHECKED BY JWM	DRAWN BY WBD
THIS SHEET TITLE SHEET					

PROJ. NO.	21-XXXX
DATE	04-21-2023
SHEET NO.	G-1