



Suite 301

240

WEST 35TH



Suite 500

Located in the heart of the Penn District

240 WEST 35TH

Building highlights

- Attended 24/7 lobby
- 24/7/365 access
- Dedicated, tenant-controlled AC
- Recently renovated entrance and lobby, building systems, facade and common corridors
- Operable windows
- 3 passenger elevators with new mechanicals
- 2 freight elevators
- Renovated bathrooms
- Institutional quality ownership



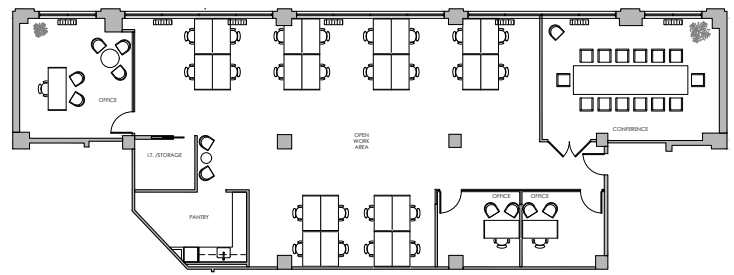
8th Floor



Suite 400



Suite 300



LEASED

Suite 300 | 1,866 rsf

- 2 offices with glass fronts
- 1 conference room with glass front
- Open area for 4-6 people
- Café style pantry
- Exposed ceiling and polished concrete floors

Suite 301 | 4,634 rsf

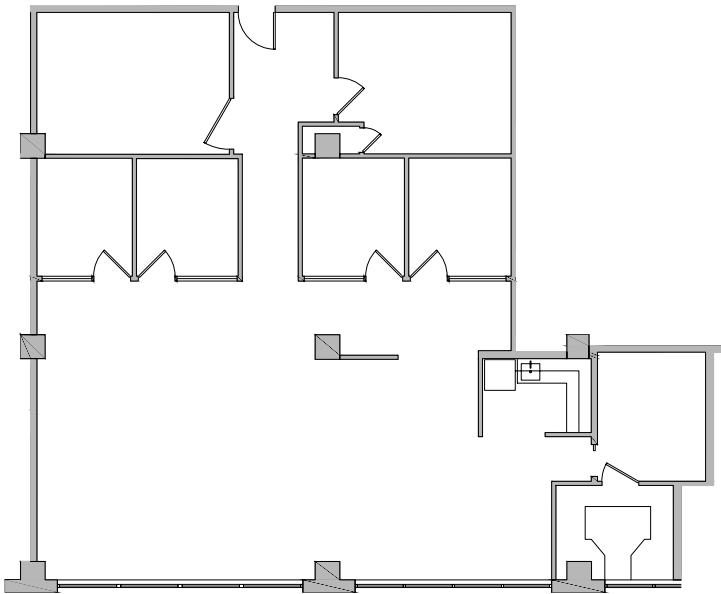
- 3 offices with glass fronts
- 1 conference room with seating for 14
- Open area for 16 people
- Café style pantry
- Exposed ceilings
- 6 zone, tenant-controlled AC



Suite 301

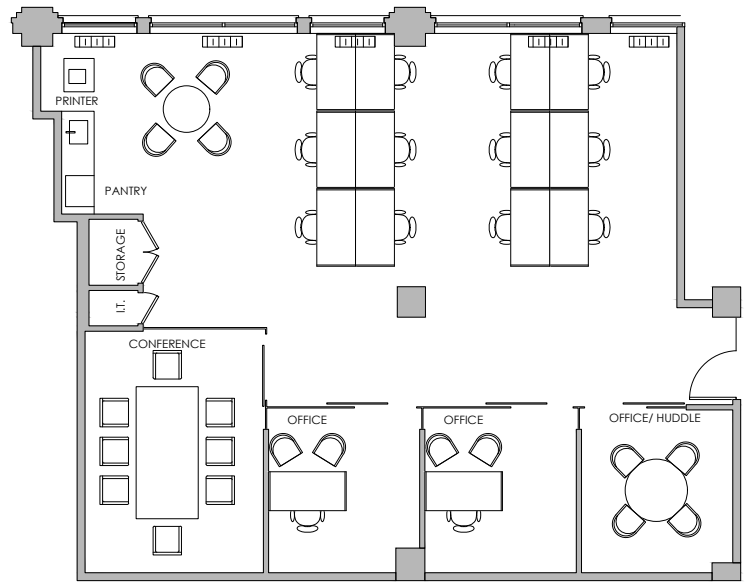


Suite 400



Suite 400 | 3,213 rsf

- Wired and furnished
- 4 offices with glass fronts
- 2 conference rooms
- Open area for 6-10 people
- Café style pantry



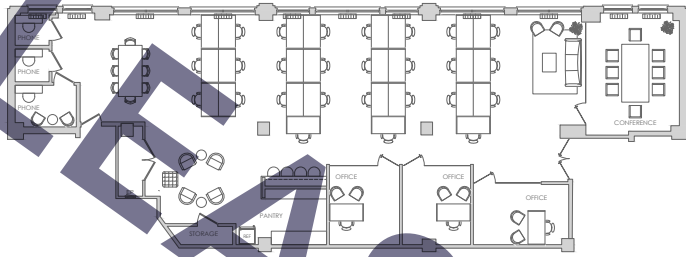
Suite 401 | 2,468 rsf

- Wired
- 3 offices with glass front
- 1 conference room with glass fronts
- Café style pantry
- Open area for 12 people
- Exposed ceilings and polished concrete floors



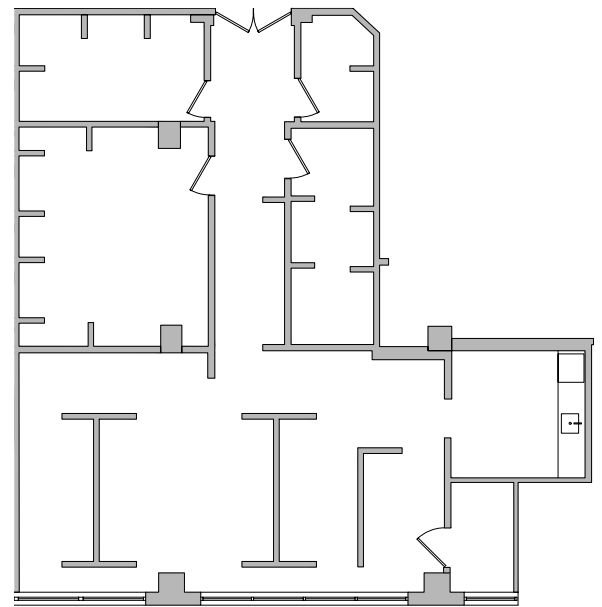
240
WEST
35TH

Suite 401



Suite 500 | 4,924 rsf

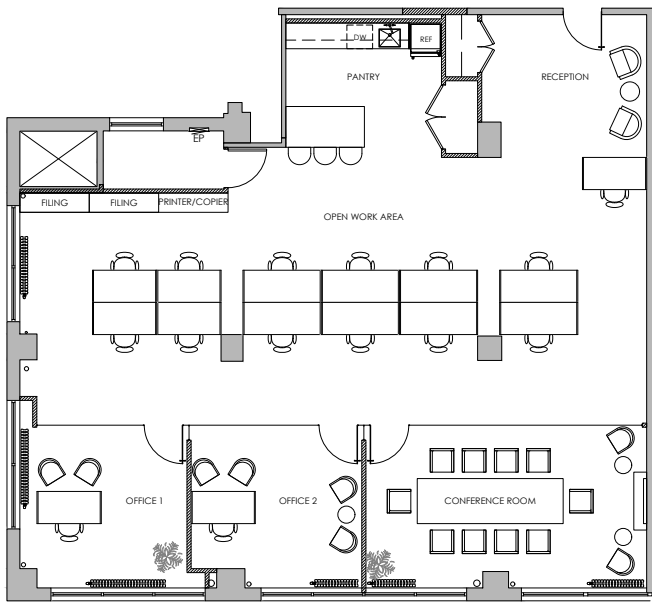
- Furnished and wired
- 3 offices with glass front
- Open area for 34 people
- Café style pantry
- 4-person conference room with glass front
- Exposed ceilings and polished concrete floors



Suite 502 | 2,323 rsf

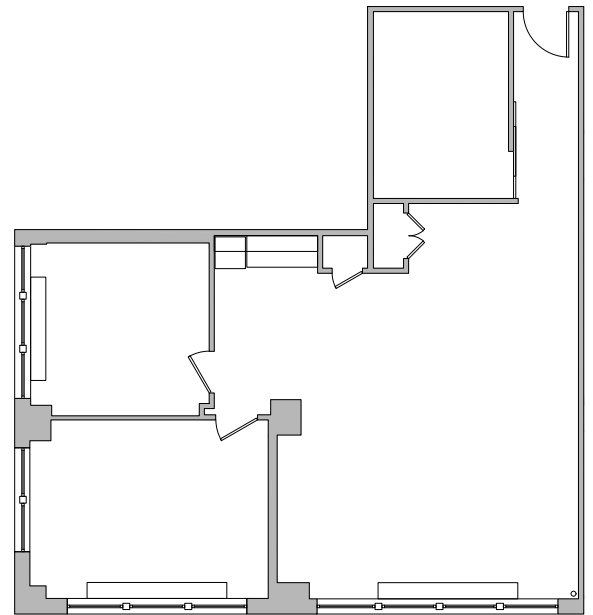
- Ideal showroom space
- 2 showrooms
- 9 built-in cubicles
- 1 large storage room
- Eat in pantry





Suite 504 | 3,229 rsf

- 2 offices with glass fronts
- 1 board room sized conference room with glass front
- Pantry
- Open area for 12 people
- Exposed ceilings and polished concrete floors



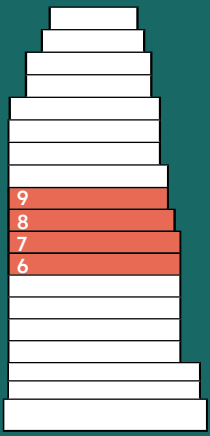
Suite 1004 | 1,947 rsf

- 2 private offices
- 1 conference room
- Café style pantry
- Views of Penn Station



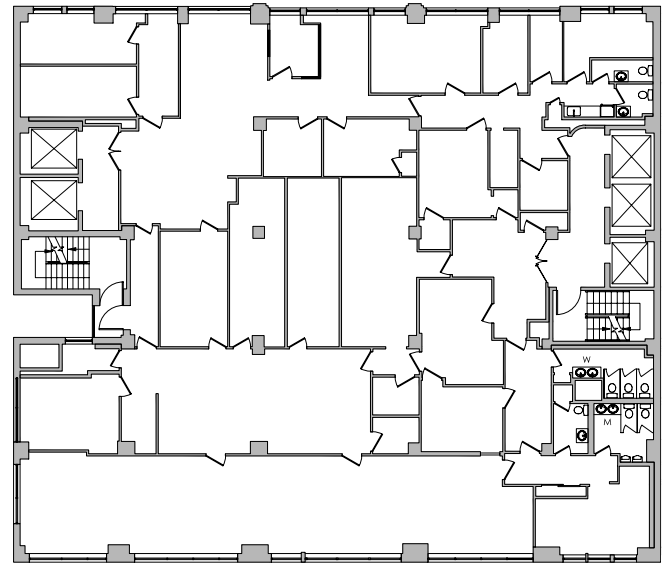
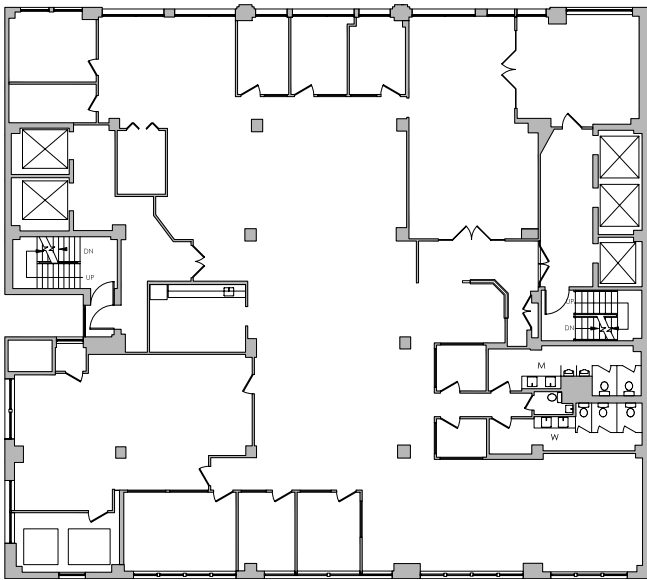
Suite 1004

240
WEST
35TH



Building-within-a-Building

- Up to 42,800 rsf of contiguous space
- 6th - 9th floors with dedicated elevator potential



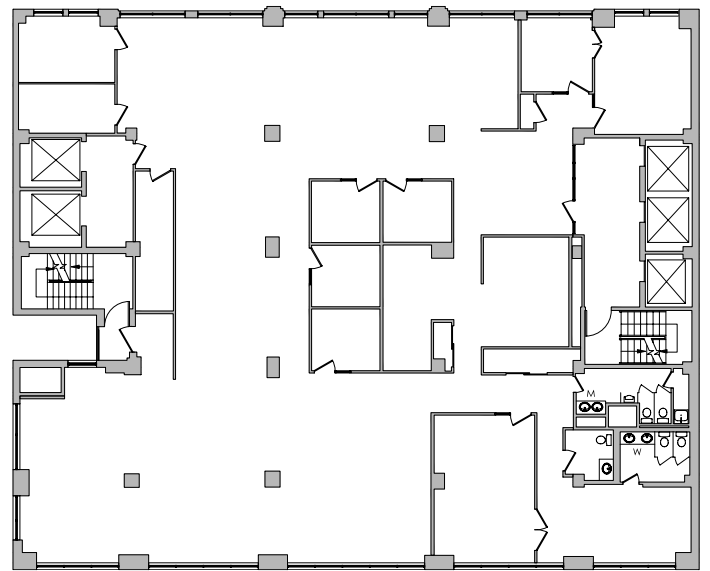
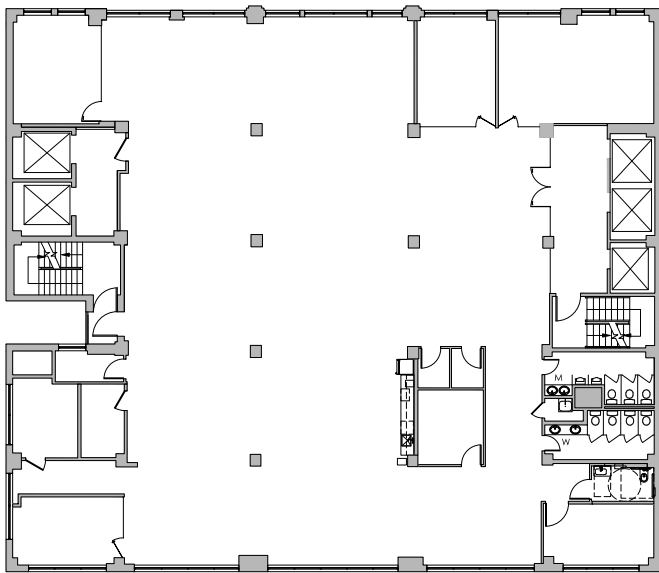
Entire 6th floor | 11,070 rsf

- 8 offices
- 2 conference rooms
- Large bullpen
- Eat-in pantry

Entire 7th floor | 10,676 rsf

- Landlord will build to suit
- Private bathrooms (including 1 ADA)





Entire 8th floor | 10,969 rsf

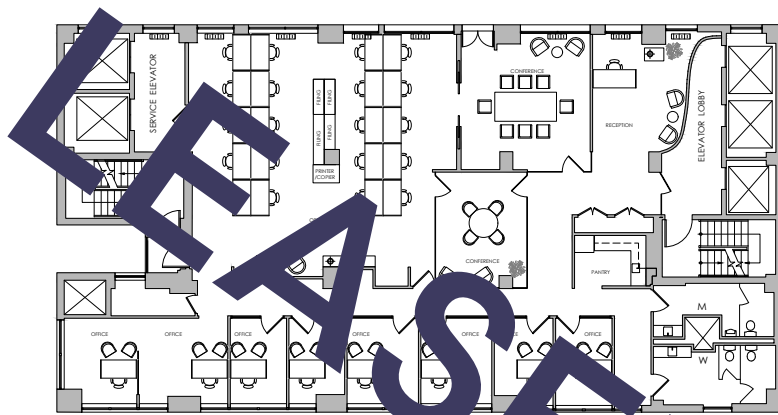
- New prebuilt
- 4 conference rooms with glass fronts
- Large bullpen
- Café style pantry
- Private bathrooms (including 1 ADA)
- Wellness room

Entire 9th floor | 10,100 rsf

- 8 offices
- 1 Conference room,
- Large open area
- Eat-in pantry
- Private bathrooms (including 1 ADA)



240
WEST 35TH



Entire 17th floor | 6,290 rsf

- 8 offices with glass fronts
- Open area for 20 people
- Conference room for 8 people
- 4 person meeting room
- Private balcony
- Walk-in pantry

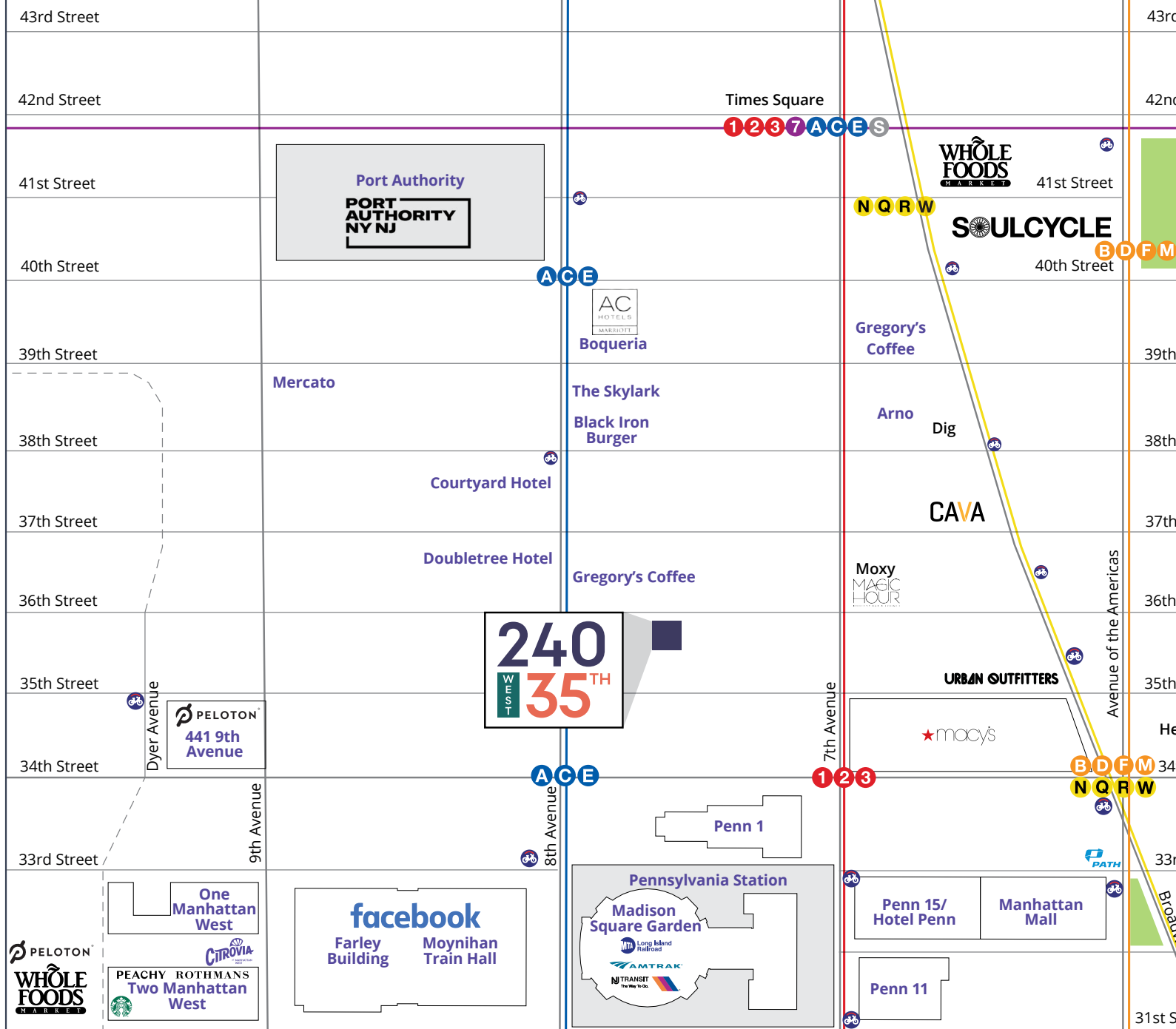


Neighborhood highlights

- Centrally located between Penn Station and Port Authority and steps from The Moynihan Train Hall, Hudson Yards and Herald Square
- Neighbors include: Facebook, Amazon, Macy's, Peloton, Whole Foods, Shops at Manhattan West, Starbucks, Best Bagels, Planet Fitness and Staples
- Near the following:



240
WEST **35TH**





240 WEST 35TH



Furniture can be made available upon request

For more information, please contact:

Todd Korren

Executive Managing Director | Principal
D: 212 776 1283 | M: 516 815 7496
tkorren@lee-associates.com

Stephanie Moore

Executive Senior Director
M: 347 824 9872
smoore@lee-associates.com

Woody King

Managing Director
D: 212 776 4352
wking@lee-associates.com

All information supplied is from sources deemed reliable and is furnished subject to errors, omissions, modifications, removal of the listing for sale or lease, and to any listing conditions, including the rates and manner of payment of commissions for particular offerings imposed by principals or agreed by this Company, the terms of which are available to principals or duly licensed brokers. Any square footage dimensions set forth are approximate.

