



0.3 Acre Building Pad - Columbus, GA

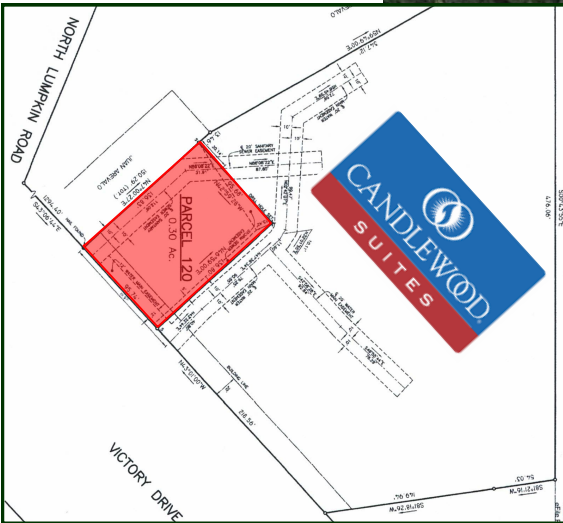
3389 Victory Drive
Columbus, GA 31903

(Latitude, Longitude)
(32.42833, -84.95017)

AVAILABLE:

0.3 Acres (13,068 SF)
\$239,000.00

- Ready to build pad site with utilities.
- Located at signalized intersection.
- Shares parking and access with Candlewood Suites.



DEMOGRAPHICS:

	5 miles	10 miles	20 miles
2025 Population:	115,353	253,796	335,744
2025 Households:	46,776	103,189	133,780
2025 Median Household Income:	\$42,065	\$52,070	\$58,199

TRAFFIC COUNTS:

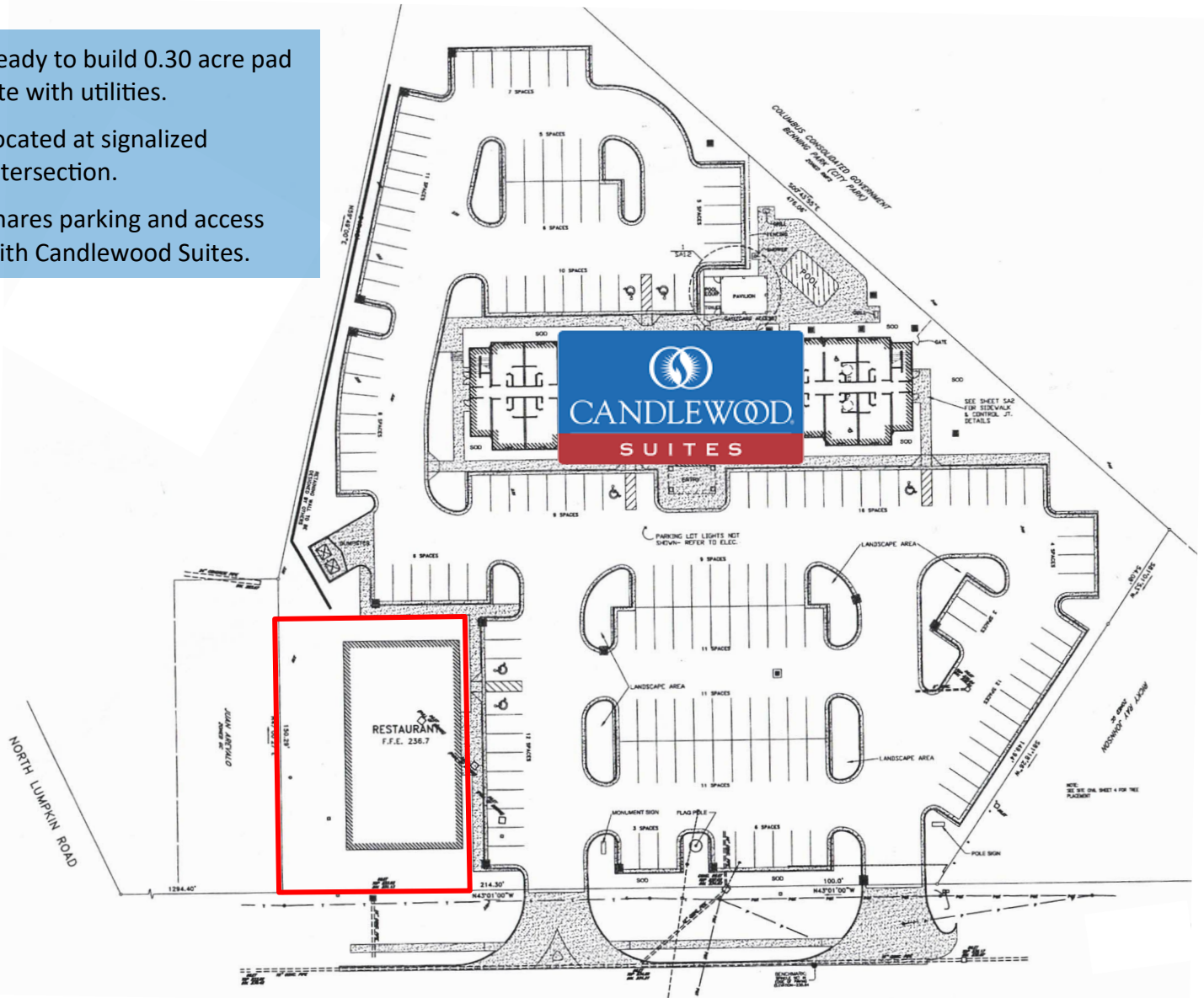
Street:	Daily Count
Victory Drive:	33,700
South Lumpkin Rd:	10,200

Please contact our office for additional information.

The Temples Company
PO Box 405
301 Mosley Street (30474)
Vidalia, GA 30475
(912) 538-7000
www.thetemplescompany.com

* This information has been obtained from sources believed reliable. While we do not doubt its accuracy, we have not verified it and make no guarantee or representation about the information. It is your responsibility to independently confirm its accuracy and completeness. 2511NOV

- Ready to build 0.30 acre pad site with utilities.
- Located at signalized intersection.
- Shares parking and access with Candlewood Suites.



AVAILABLE

**The
TEMPLES
Company**

(912) 538-7000

For more information, please
call or email:

The Temples Company
(912) 538-7000

info@thetemplescompany.com

www.thetemplescompany.com