

000 I-16, Soperton, GA 30457



PROPERTY DESCRIPTION

Positioned at the prime intersection of I-16 and GA-297 in Treutlen County, GA, this 49.37-acre site offers exceptional connectivity between Atlanta and Savannah, located just 97 miles from the Port of Savannah and 165 miles from Atlanta. Zoned C-5 Commercial and perfectly suited for travel or truck stop development, the property features immediate access to a major interstate and lies within reach of a regional workforce exceeding 300,000 people. With strong infrastructure and a strategic location near key logistics hubs, this site presents a compelling opportunity for developers and investors at a competitive price of \$30,000 per acre.

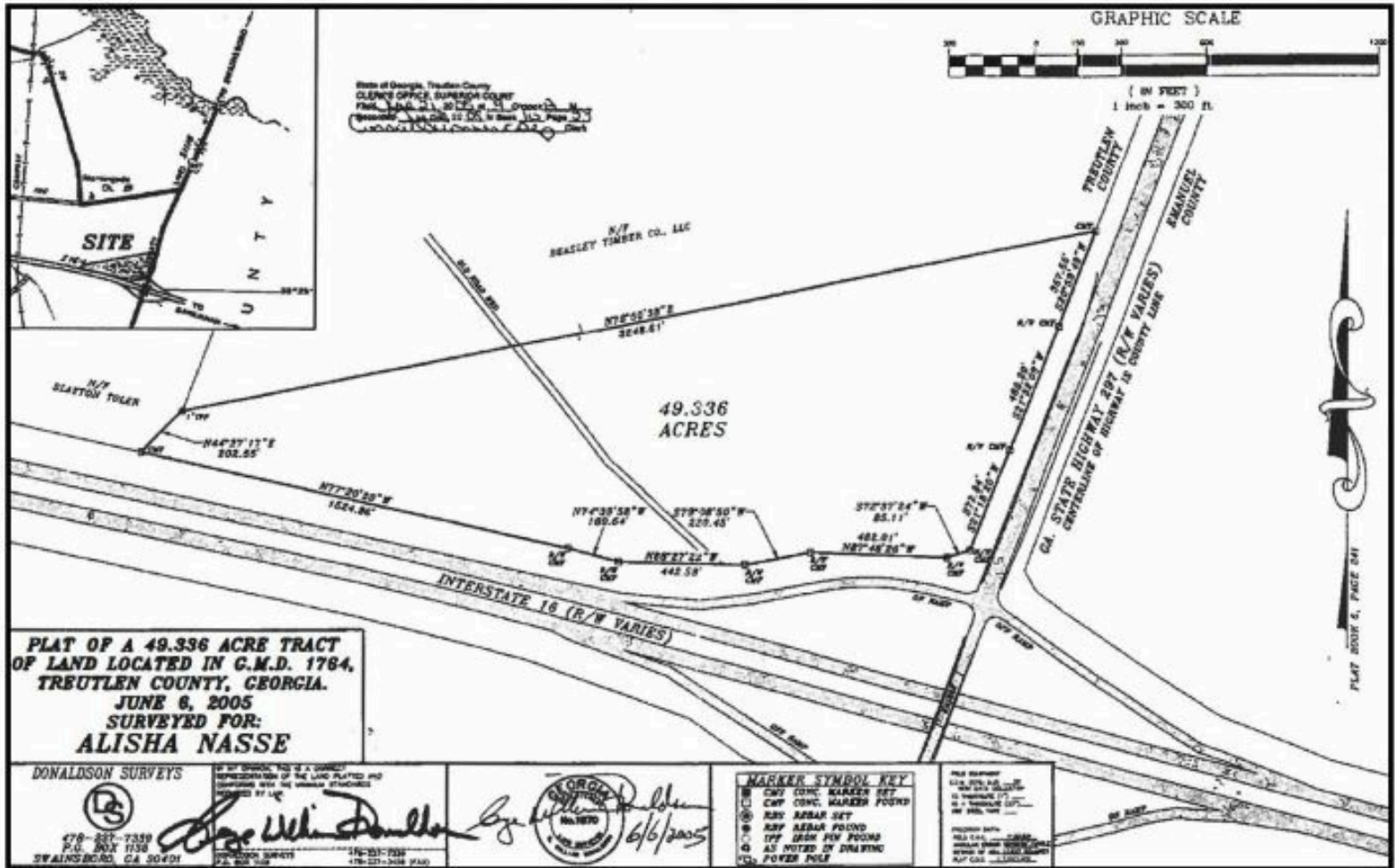
CONTACT:



SARAH BYRD
SARAHBYRD@KW.COM
404-324-1344

FOR SALE

000 I-16, Soperton, GA 30457



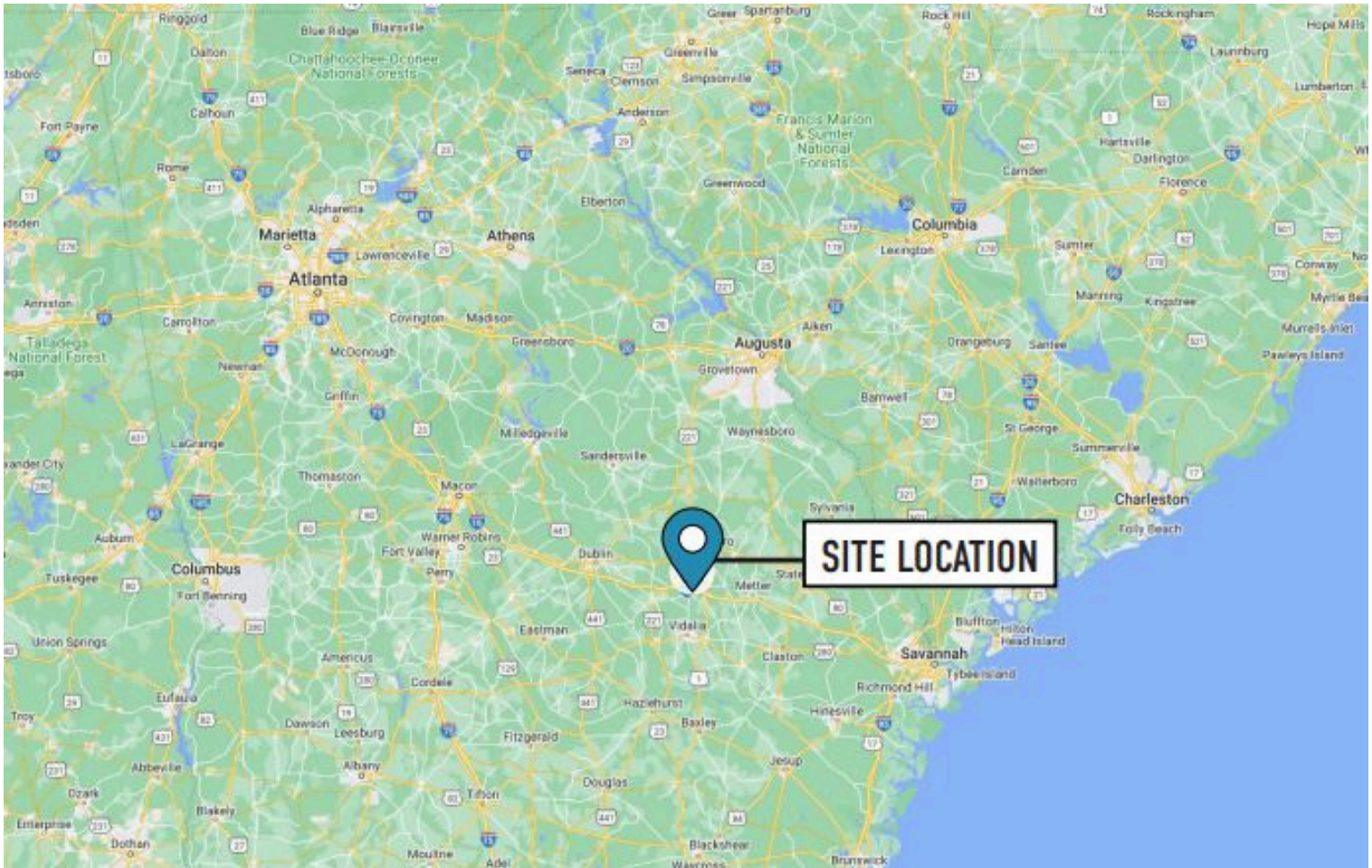
CONTACT:



SARAH BYRD
SARAHBYRD@KW.COM
404-324-1344

FOR SALE

000 I-16, Soperton, GA 30457



LOCATION DESCRIPTION

Discover an unparalleled development opportunity at the Soperton I-16 site, strategically located at the intersection of I-16 and GA-297, midway between Atlanta and Savannah. This expansive 49.37-acre commercially zoned (C-5) property boasts exceptional highway visibility and direct access to I-16, a critical east-west corridor. Its prime position is less than 100 miles from the rapidly expanding Port of Savannah and benefits from access to a substantial regional workforce of over 300,000 in the adjacent Dublin-Laurens County employment hub. Ideal for a major travel center or truck stop, this site offers strategic connectivity to major metropolitan areas including Atlanta, Savannah, Charleston, and Charlotte.

CONTACT:



SARAH BYRD
SARAHBYRD@KW.COM
404-324-1344