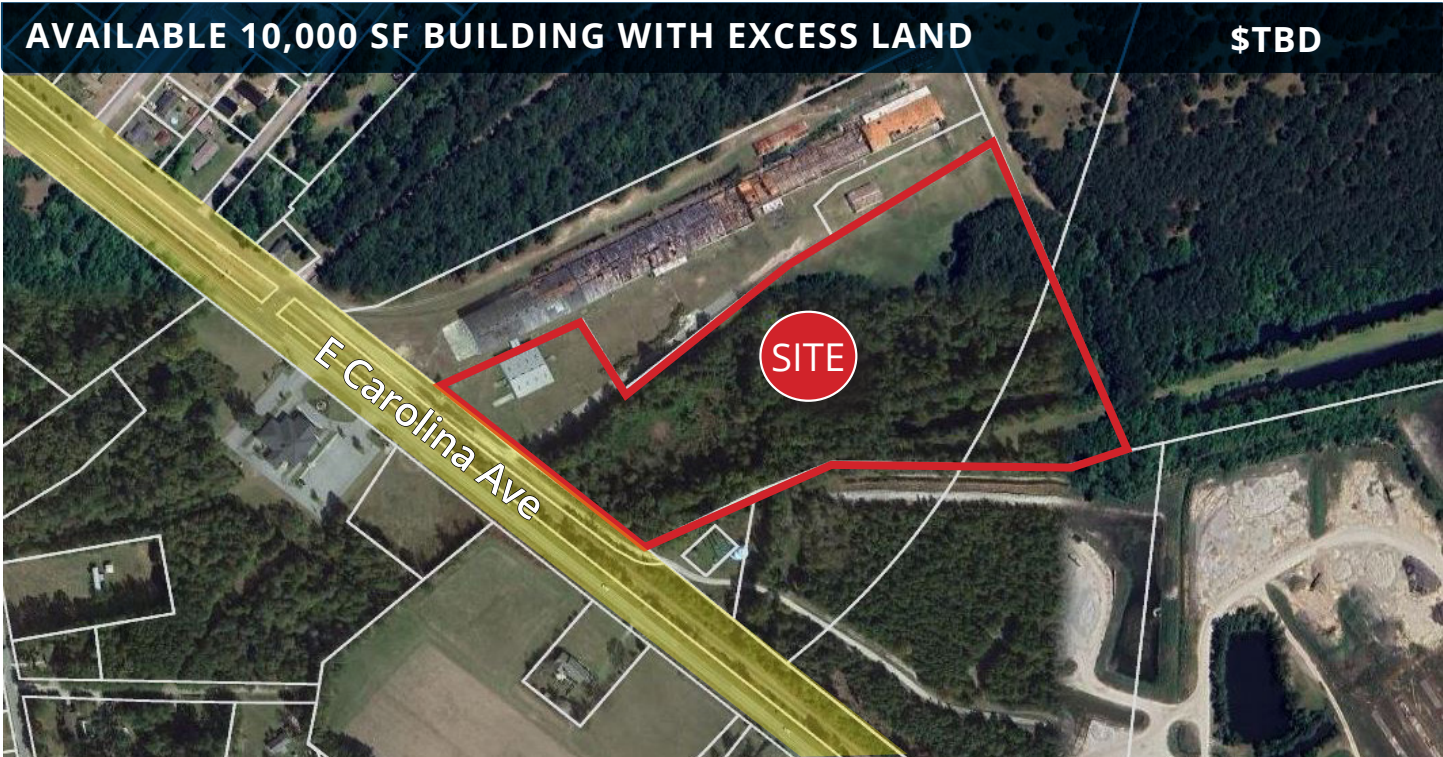


FOR LEASE

TBD E. Palmetto Ave, Varnville, South Carolina 29944



AVAILABLE 10,000 SF BUILDING WITH EXCESS LAND

\$TBD

FEATURES

Available Square Footage	10,000 SF
Land Square Footage	18.44 Acres
Office Square Footage	TBD
Loading	1 Dock High Position 2 Ground Level Positions
Sprinklers	Yes
Year Built	2000
Minimum Ceiling Clearance	12'
Construction	Metal
Zoning	TBD

ACCESSIBILITY

MILES TO	
Port of Savannah	65
Savannah/Hilton Head International Airport	65
Charleston	75

IMMEDIATE ACCESS TO

U.S. Route 278
I-95

HIGHLIGHTS

- Flexible Use
- Coordinates: 32°50'35.3"N 81°04'08.6"W
- Additional cleared land possible



WESLEY BABI
Cal DRE Lic# 01822752
📞 310.436.6481
✉ wbabi@lareminc.com



SCOTT REID
SC Lic# 113618
📞 949.942.6578
✉ scott@parasellinc.com

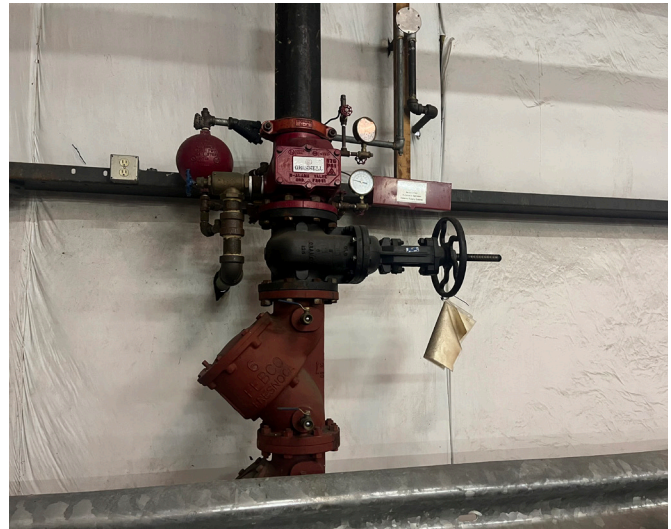
The information above has been obtained from sources believed reliable. While we do not doubt its accuracy, we have not verified it and make no guarantee, warranty or representation about it. It is your responsibility to independently confirm its accuracy and completeness. Any projections, options, assumptions or estimates used are for example only and do not represent the current or future performance of the property. The value of this transaction to you depends on tax and other factors which should be evaluated by your tax, financial and legal advisors. You and your advisors should conduct a careful, independent investigation of the property to determine to your satisfaction the suitability of the property for your needs.



IN ASSOCIATION WITH SCOTT REID & PARASELL, INC. |
A LICENSED SOUTH CAROLINA BROKER #23763

FOR LEASE

TBD E. Palmetto Ave, Varnville, South Carolina 29944



The information above has been obtained from sources believed reliable. While we do not doubt its accuracy, we have not verified it and make no guarantee, warranty or representation about it. It is your responsibility to independently confirm its accuracy and completeness. Any projections, options, assumptions or estimates used are for example only and do not represent the current or future performance of the property. The value of this transaction to you depends on tax and other factors which should be evaluated by your tax, financial and legal advisors. You and your advisors should conduct a careful, independent investigation of the property to determine to your satisfaction the suitability of the property for your needs.

310.719.1585 // www.lareminc.com
165 Savarona Way, Carson, California 90746

TRUSTED INDUSTRIAL REAL ESTATE SOLUTIONS SINCE 1993