



HOULIHAN LAWRENCE
COMMERCIAL

1157 Pleasantville Rd

Briarcliff Manor, NY 10510

Exclusively Represented By:

Garry Klein

Associate Broker | Regional Manager

914 588 1585

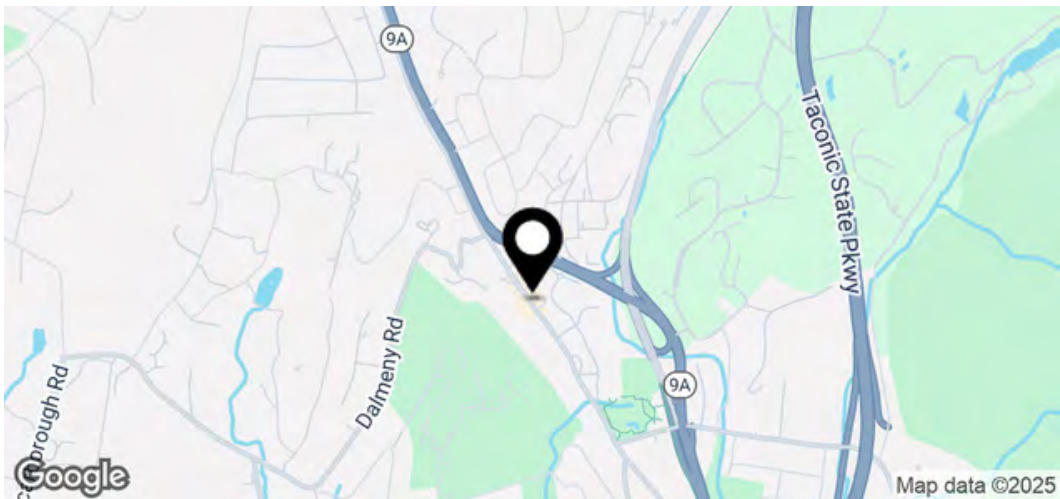
gklein@houlihanlawrence.com

OFFERING MEMORANDUM



Executive Summary

FOR SALE



Offering Summary

Price	\$895,000
RE Taxes	\$11,650
Lot Size	3,920 SF
Main Floor	1,600 SF
Walkout Lower Level	1,600 SF

Property Overview

Premier investment or owner/user opportunity in sought after Briarcliff Manor.

Located on the main commercial strip this 1,600 square foot retail building has a full walk-out basement with an overhead door in the rear and four deeded parking spaces. The space is enhanced with a 12 foot ceilings and lots of light from the full glass storefront façade. High area household income, excellent foot and vehicular traffic and ample street parking make this highly desirable asset.

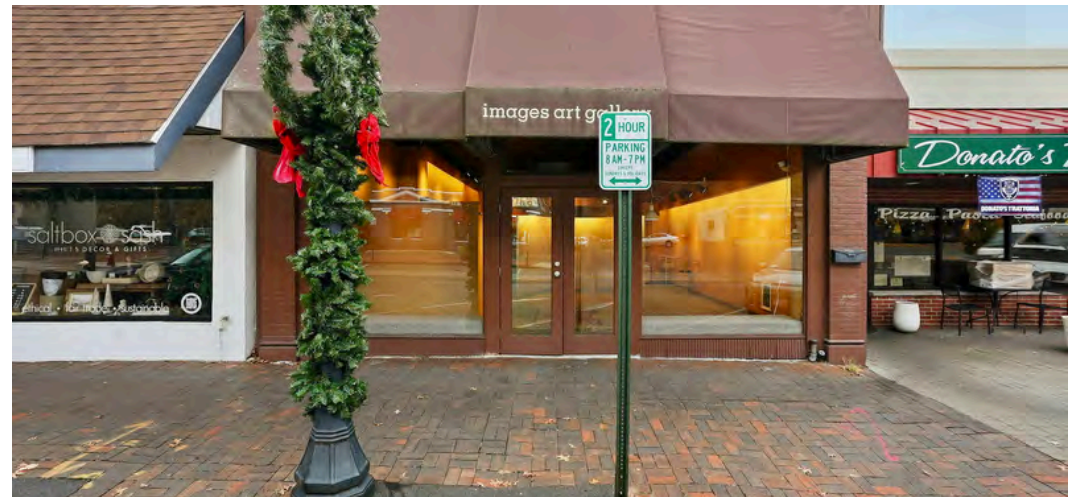


Houlihan Lawrence Commercial
800 Westchester Ave. Ste. N517
Rye Brook, NY 10573
[View Website](#)



Exterior Photos | Front

FOR SALE



Houlihan Lawrence Commercial
800 Westchester Ave. Ste. N517
Rye Brook, NY 10573
[View Website](#)



HOULIHAN LAWRENCE
COMMERCIAL

Interior Photos

FOR SALE



Houlihan Lawrence Commercial
800 Westchester Ave. Ste. N517
Rye Brook, NY 10573
[View Website](#)



HOULIHAN LAWRENCE
COMMERCIAL

Interior Photos

FOR SALE



Houlihan Lawrence Commercial
800 Westchester Ave. Ste. N517
Rye Brook, NY 10573
[View Website](#)



HOULIHAN LAWRENCE
COMMERCIAL

Exterior Photos | Back

FOR SALE



Houlihan Lawrence Commercial
800 Westchester Ave. Ste. N517
Rye Brook, NY 10573
[View Website](#)



Aerial Photo

FOR SALE



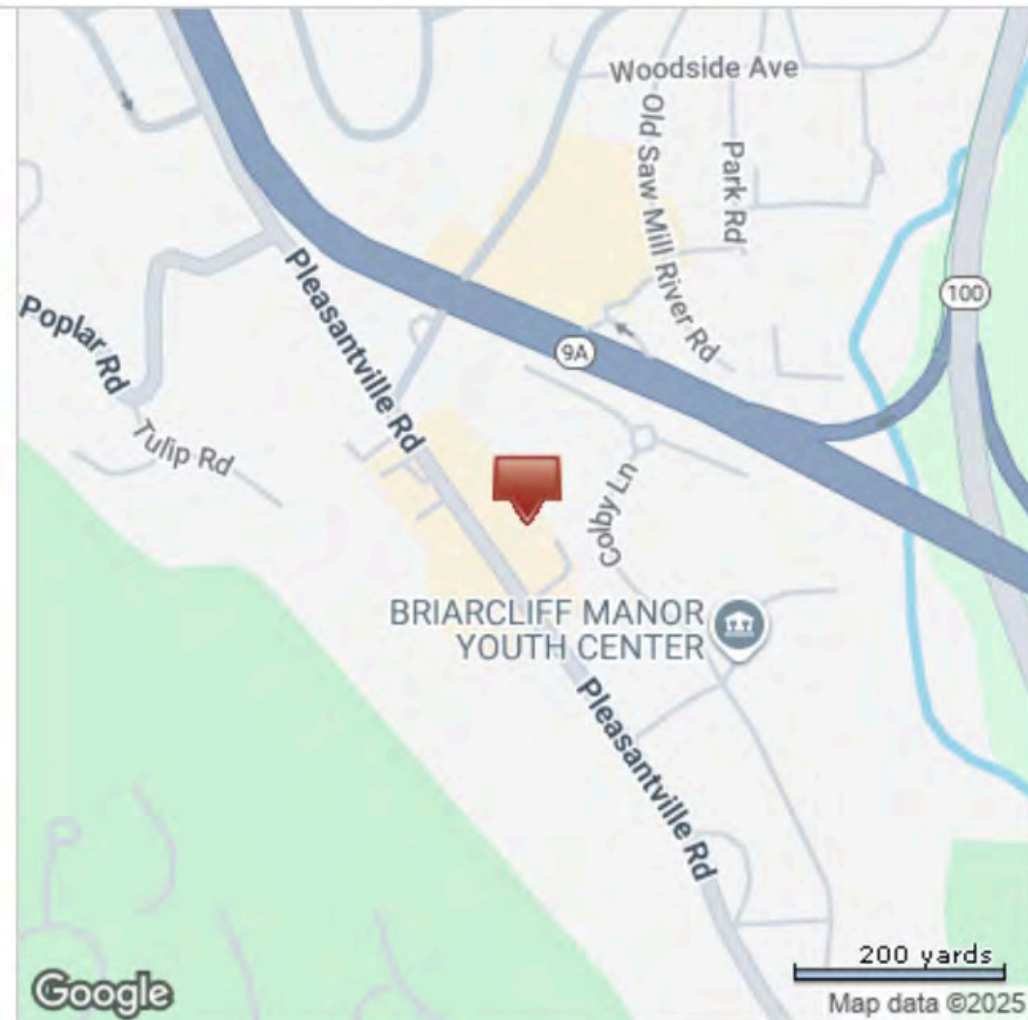
Houlihan Lawrence Commercial
800 Westchester Ave. Ste. N517
Rye Brook, NY 10573
[View Website](#)



HOULIHAN LAWRENCE
COMMERCIAL

Tax Map

FOR SALE

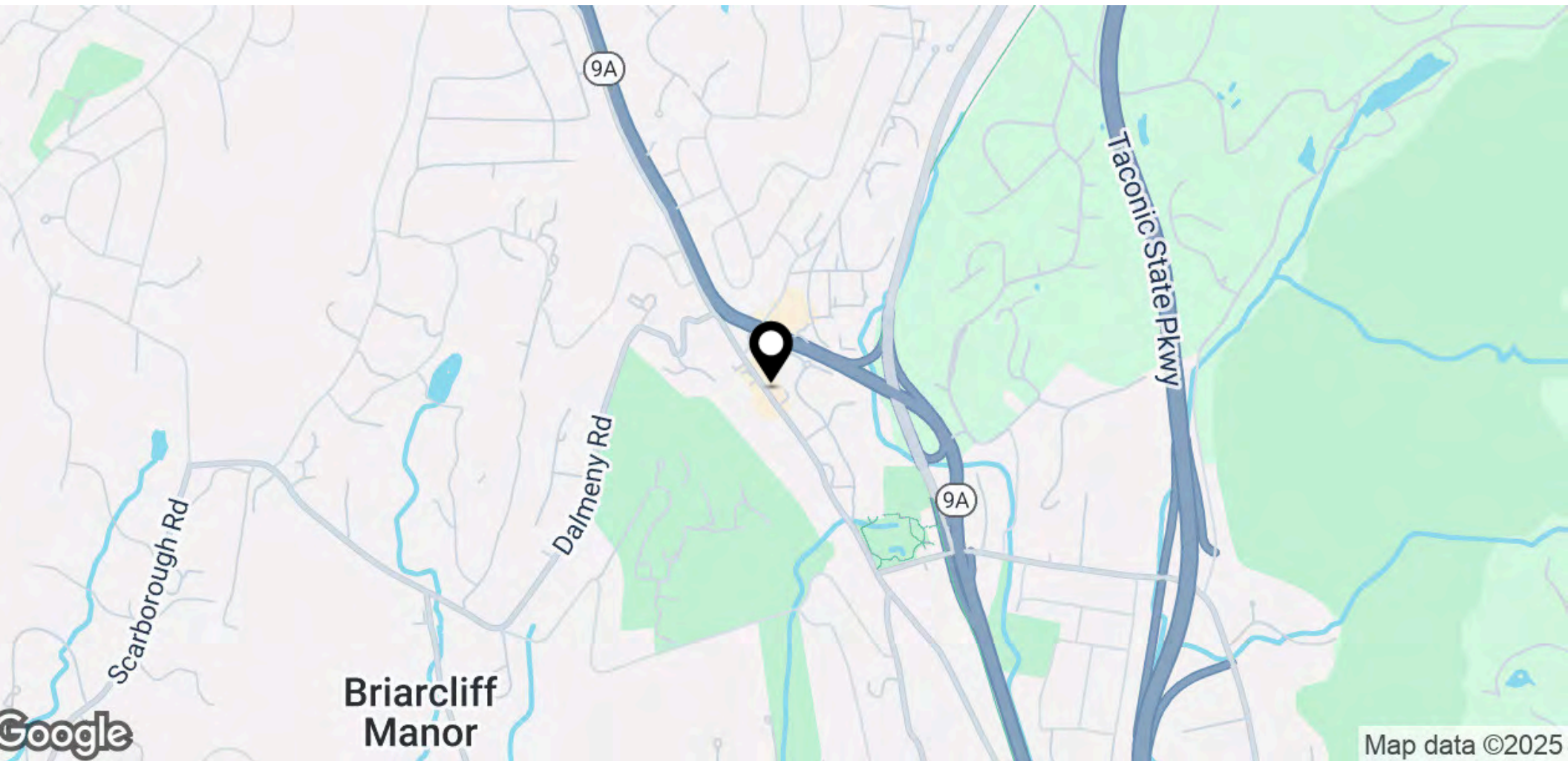


Houlihan Lawrence Commercial
800 Westchester Ave. Ste. N517
Rye Brook, NY 10573
[View Website](#)



Regional Map

FOR SALE



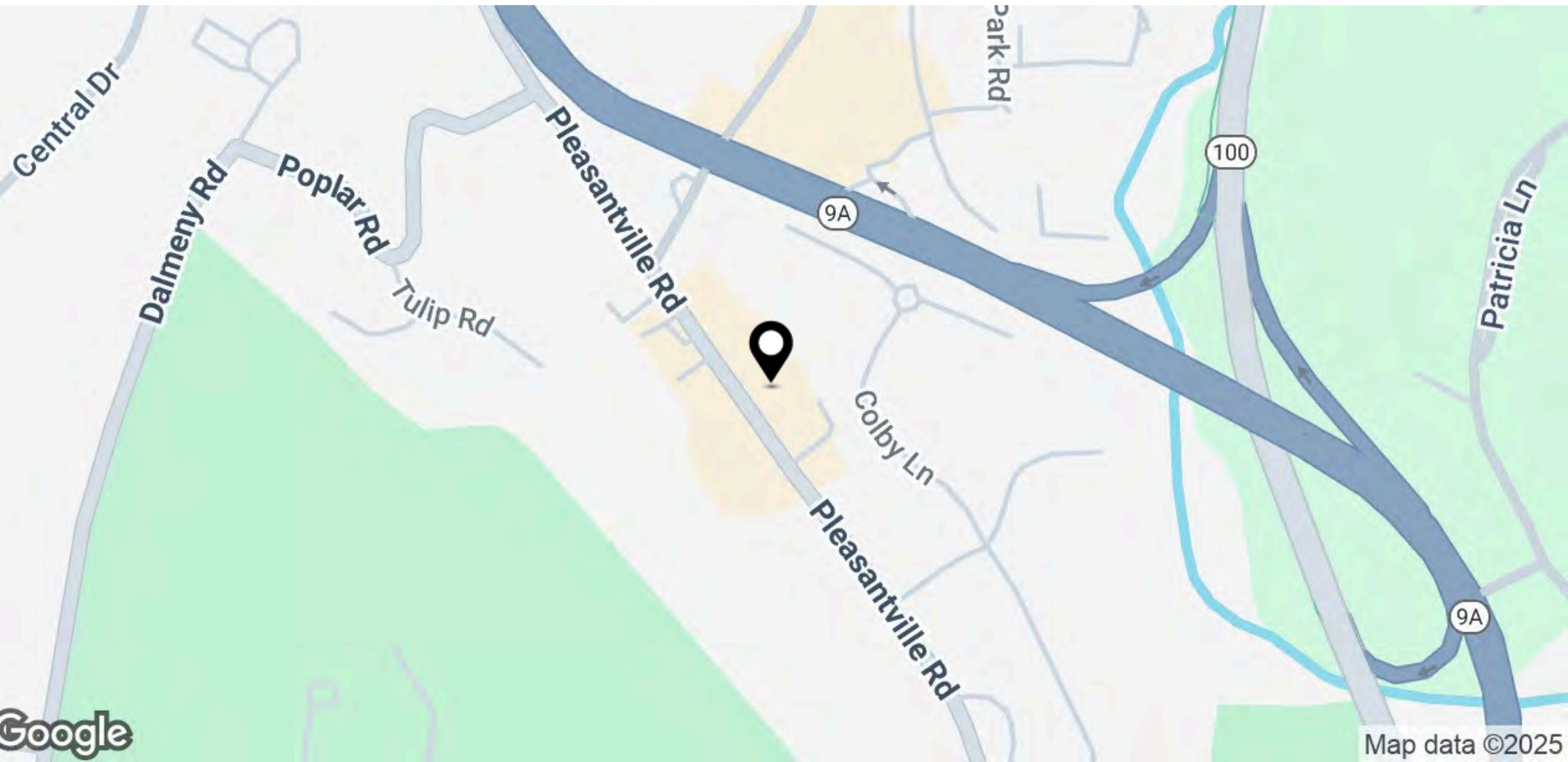
Houlihan Lawrence Commercial
800 Westchester Ave. Ste. N517
Rye Brook, NY 10573
[View Website](#)



HOULIHAN LAWRENCE
COMMERCIAL

Location Map

FOR SALE

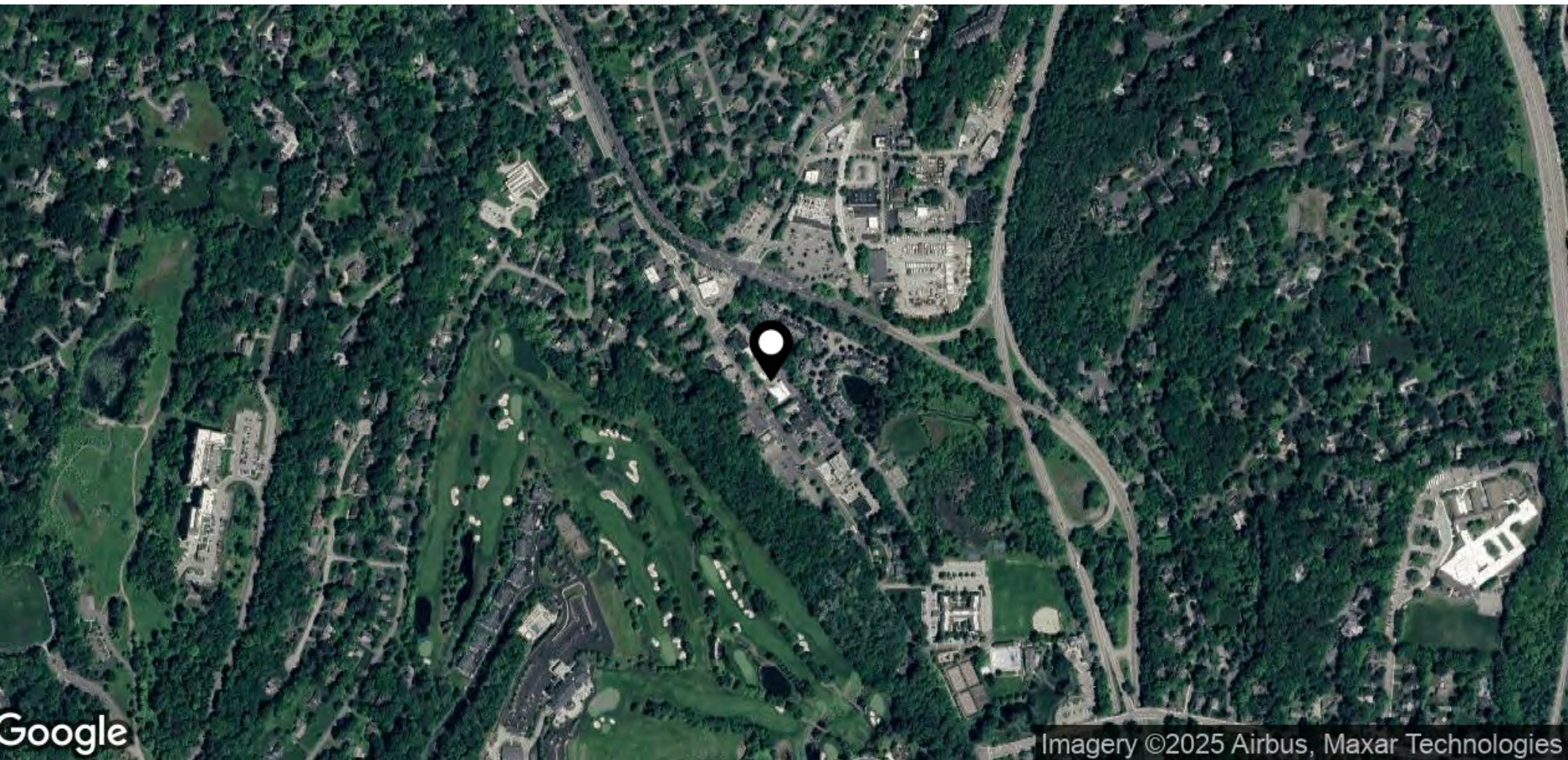


Houlihan Lawrence Commercial
800 Westchester Ave. Ste. N517
Rye Brook, NY 10573
[View Website](#)



Aerial Map

FOR SALE



Houlihan Lawrence Commercial
800 Westchester Ave. Ste. N517
Rye Brook, NY 10573
[View Website](#)



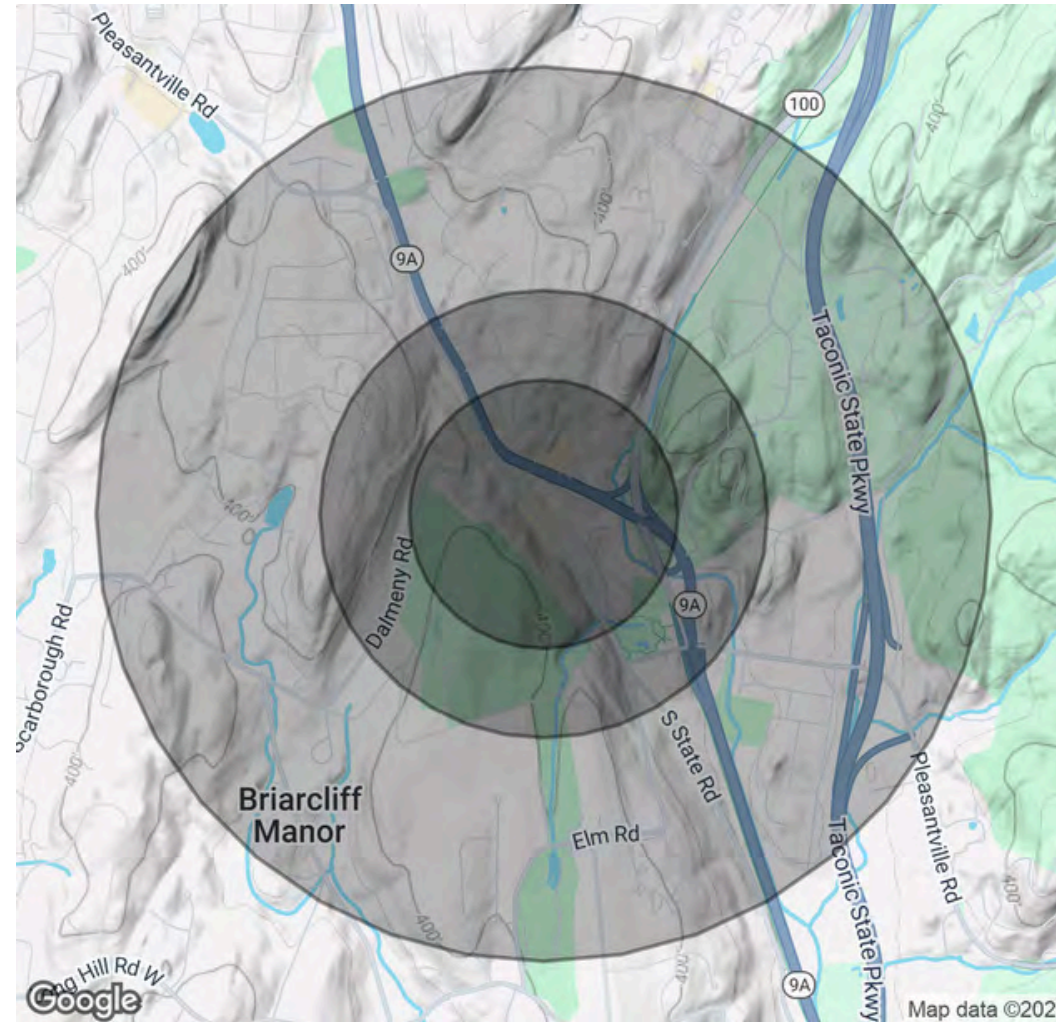
Demographics Map & Report

FOR SALE

Population	0.3 Miles	0.5 Miles	1 Mile
Total Population	280	1,473	4,782
Average Age	47	47	46
Average Age (Male)	44	43	43
Average Age (Female)	50	49	48

Households & Income	0.3 Miles	0.5 Miles	1 Mile
Total Households	110	561	1,743
# of Persons per HH	2.5	2.6	2.7
Average HH Income	\$220,429	\$229,940	\$243,256
Average House Value	\$891,968	\$919,600	\$925,885

Demographics data derived from AlphaMap



Houlihan Lawrence Commercial
800 Westchester Ave. Ste. N517
Rye Brook, NY 10573
[View Website](#)



HOULIHAN LAWRENCE
COMMERCIAL