

FOR LEASE:

270 Sq. Ft. Office Suite

201 E. Park Street • Suite E • Mundelein • IL 60060



Contact:

[Ken Eichelberger](#)

847-533-7144 (Mobile)

jcf.ike@sbcglobal.net

PROPERTY HIGHLIGHTS:

BUILDING SIZE: 270 Sq. Ft.

COMPLEX TYPE: Office Complex

CONSTRUCTION: Block / Dryvit

LOT SIZE: Common

CEILING HEIGHT: 9' Clear

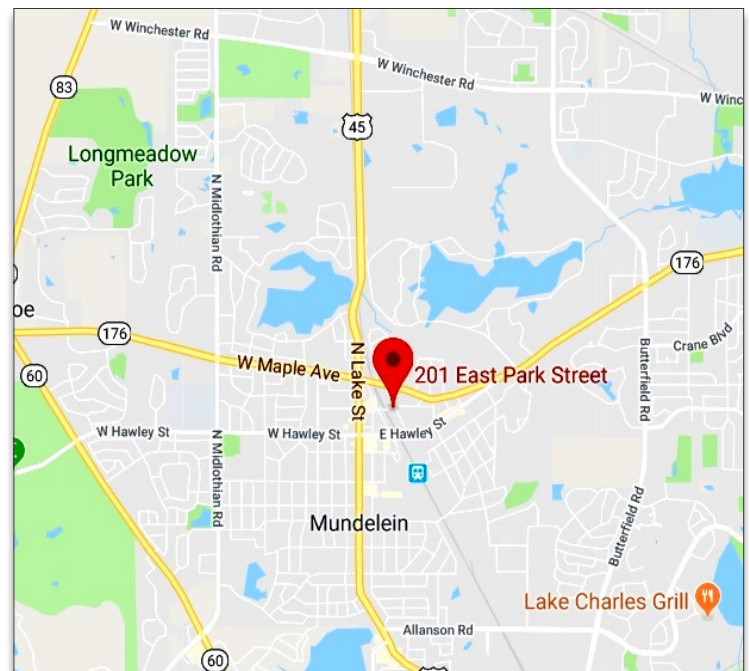
POWER: 200 Amps/240 Volts

HVAC: Central System

PARKING: Excellent

Common Parking Lots

BASE RENT: \$250.00/Month Gross



[Google Maps Link](#)

COMMENTS: Very nice hard-to-find small office suite, open office, private entrance.

DIRECTIONS: Route 45 to East Park Street, east to just past tracks, corner of Park Street and Morris Avenue.

JC FORNEY INC
REALTY

Serving Clients Since 1935
Commercial Real Estate Specialists

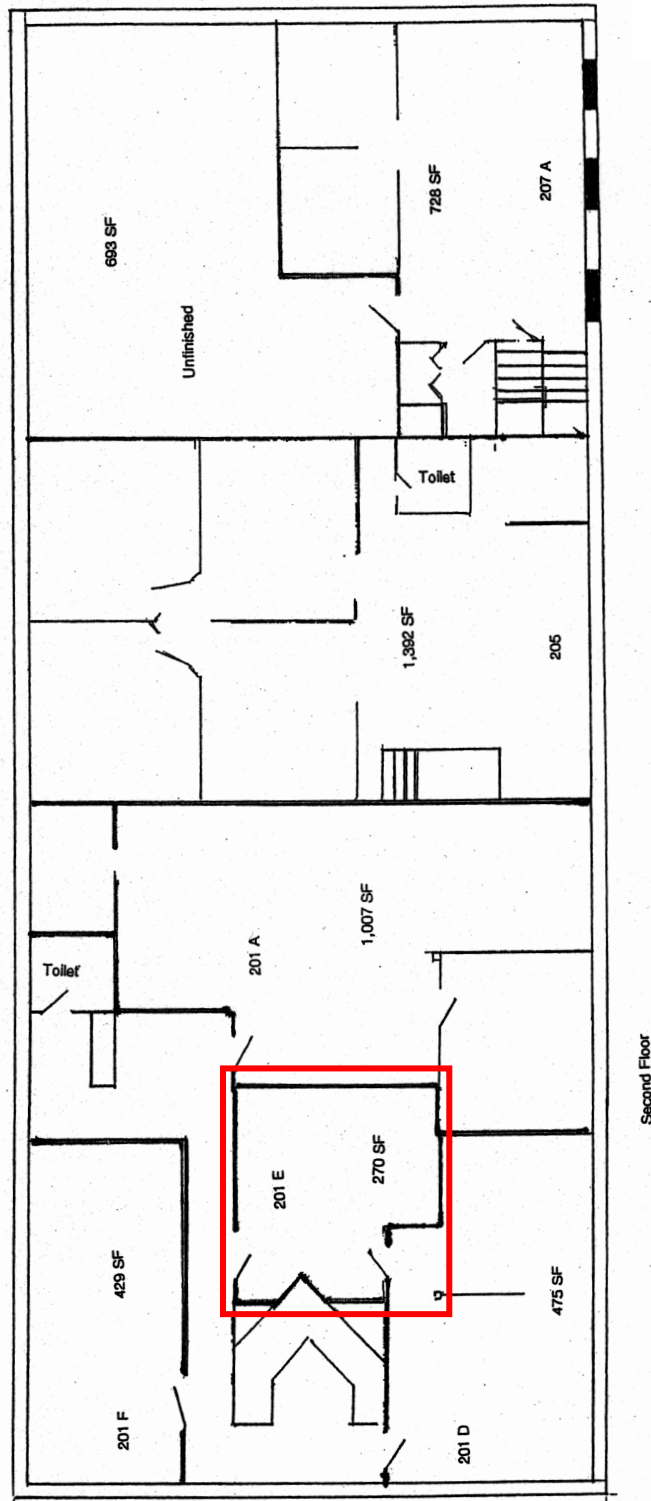
131 West Park Avenue • Libertyville • IL • 60048
www.jcforneyrealty.com
Office: (847) 362-2000

All information contained herein is from sources deemed reliable and is submitted subject to errors, omissions, and change without notice.

FOR LEASE:

270 Sq. Ft. Office Suite

201 E. Park Street • Suite E • Mundelein • IL 60060



JC FORNEY INC
REALTY

Serving Clients Since 1935
Commercial Real Estate Specialists

131 West Park Avenue • Libertyville • IL • 60048

www.jcforneyrealty.com

Office: (847) 362-2000

All information contained herein is from sources deemed reliable and is submitted subject to errors, omissions, and change without notice.