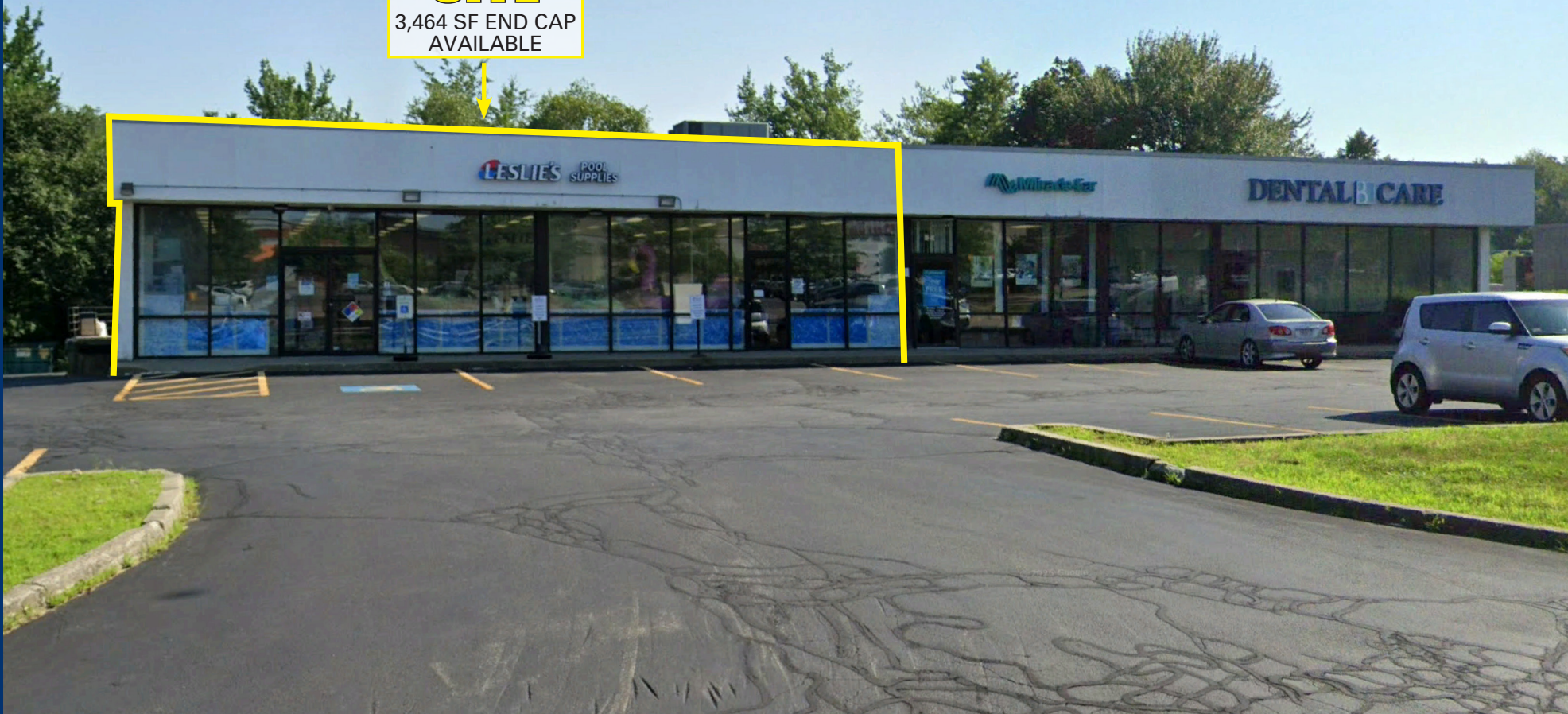


**SITE**

3,464 SF END CAP  
AVAILABLE



NORTH DARTMOUTH, MA

# 323 STATE ROAD

3,464 SF END CAP AVAILABLE FOR LEASE



# PROJECT DETAILS

323 STATE ROAD • 3,464 SF END CAP AVAILABLE FOR LEASE

## PROPERTY HIGHLIGHTS

- Prominently positioned on Route 6
- 40 Parking spaces
- 21,400 ADT on Route 6
- Pylon signage available

## 2025 DEMOGRAPHICS

	2 MILES	3 MILES	4 MILES
TOTAL POPULATION	16,332	49,612	103,987
DAYTIME POPULATION	18,198	45,032	93,166
MEDIAN HH INCOME	\$88,173	\$72,803	\$62,005
HOUSEHOLDS	5,371	18,833	41,992



ZOOM OUT  
AERIAL



LA Z BOY

NORTH DARTMOUTH MALL  
OLD NAVY  
amc  
ULTA H&M  
macy's  
JCPenney  
ALDI  
Durlington

BOB'S FURNITURE

KOHL'S

LOWE'S

BEST BUY  
STOP&SHOP

Ashley  
Ocean State  
JOB LOT

THE HOME DEPOT

BJS

TJ-maxx  
BARNES & NOBLE

Walmart

STATE ROAD

6

21,400 ADT

sleep number

Michaels  
DICK'S  
SPORTING GOODS  
petco  
FAMOUS  
footwear

CHIPOTLE  
MEXICAN  
BURRITO

Friendly's

Mobil

DUNKIN'

BURGER  
KING

TARGET

SITE  
Miracle-Ear  
Bright Dents

BayCoast  
BANK

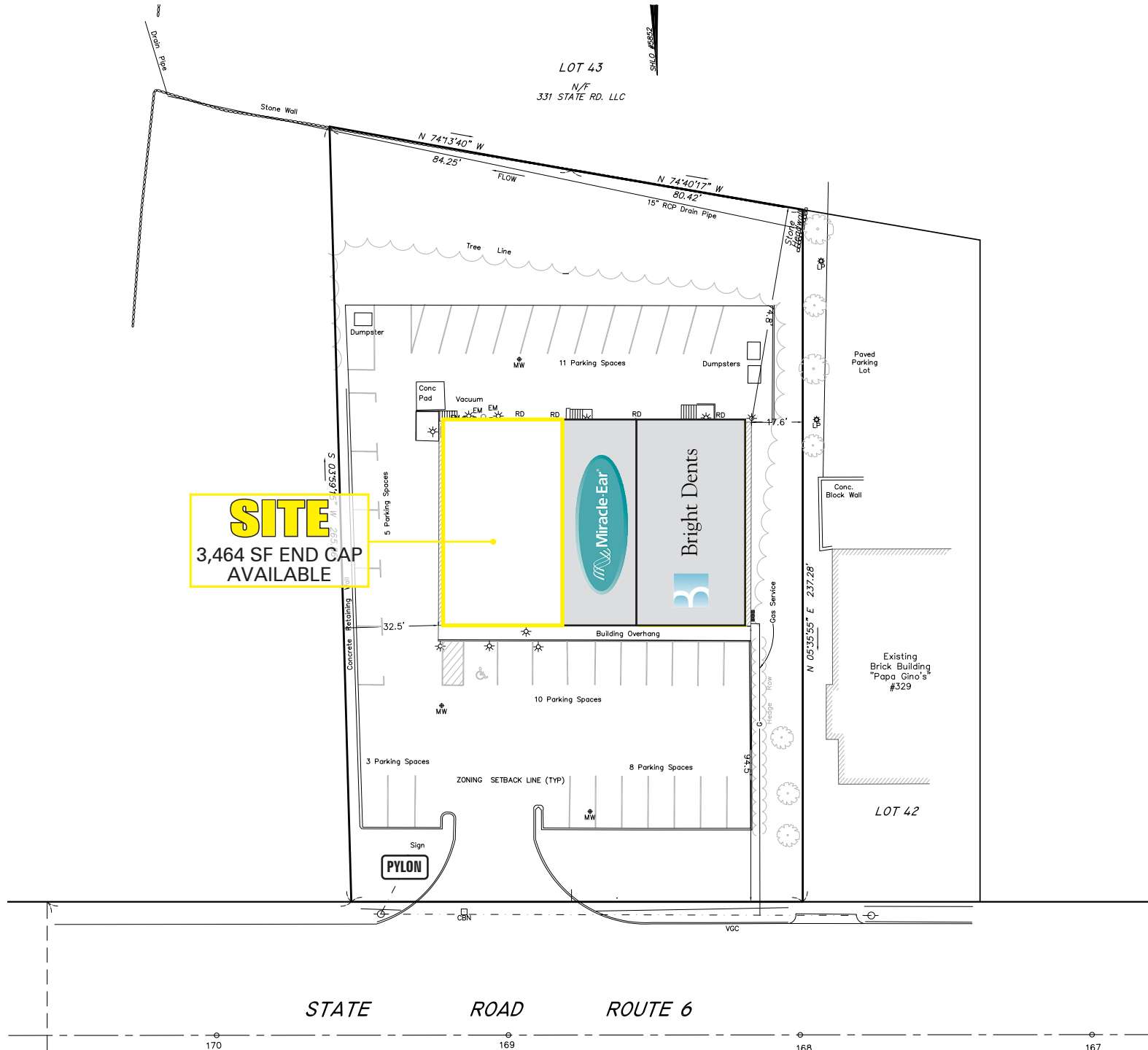
LOW  
AERIAL



**SITE**  
3,464 SF  
AVAILABLE

SITE PLAN

323 STATE ROAD • 3,464 SF END CAP AVAILABLE FOR LEASE



**SITE**  
3,464 SF END CAP  
AVAILABLE

STATE ROAD ROUTE 6

170

169

168

167

**SITE**

3,464 SF END CAP  
AVAILABLE



LESLIE'S POOL SUPPLIES

NORTH DARTMOUTH, MA

# 323 STATE ROAD

**3,464 SF END CAP AVAILABLE FOR LEASE**

**ADAM CIREL**

617.239.3621  
ACIREL@ATLANTICRETAIL.COM

**LESLIE COTTER**

781.883.8464  
LCOTTER@ATLANTICRETAIL.COM



**BOSTON**  
THE PRUDENTIAL CENTER  
BOSTON, MA 02199  
617.239.3600

**ALBANY**

**ATLANTA**

**CHARLOTTE**

**LOS ANGELES**

**NEW YORK CITY**

**ORLANDO**

**PITTSBURGH**

**WEST PALM BEACH**

**WWW.ATLANTICRETAIL.COM**

 [LINKEDIN.COM/COMPANY/ATLANTIC-RETAIL-PROPERTIES](https://www.linkedin.com/company/atlantic-retail-properties)  
 [INSTAGRAM.COM/ATLANTIC\\_RETAIL/](https://www.instagram.com/atlantic_retail/)

 **CHAINLINKS**  
RETAIL ADVISORS