



Office Unit for Lease, 1895SF

3715 University Dr, STE B
Durham, NC 27707

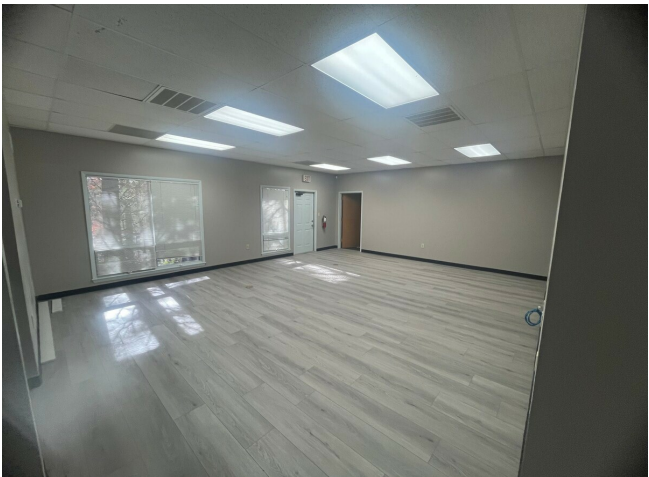
Wen Zhong
Bryanna Property LLC
3715 University Dr, STE B ,Durham, NC 27707
wrzhong.lunstone@gmail.com
(919) 396-0901



1895 SF Office Unit

Base \$19.00 /SF/YR + TICAM \$4.98/SF/YR

- 24 Hour Access
- Signage
- Well maintained office plaza



Rental Rate:	\$19.00 /SF/YR
Property Type:	Office
Property Subtype:	Medical
Building Class:	B
Rentable Building Area:	4,069 SF
Year Built:	1996
Walk Score ®:	61 (Somewhat Walkable)
Transit Score ®:	34 (Some Transit)
Taxes:	\$0.12 USD/SF/MO
Operating Expenses:	\$0.30 USD/SF/MO
Rental Rate Mo:	\$1.58 /SF/MO

1st Floor Ste B

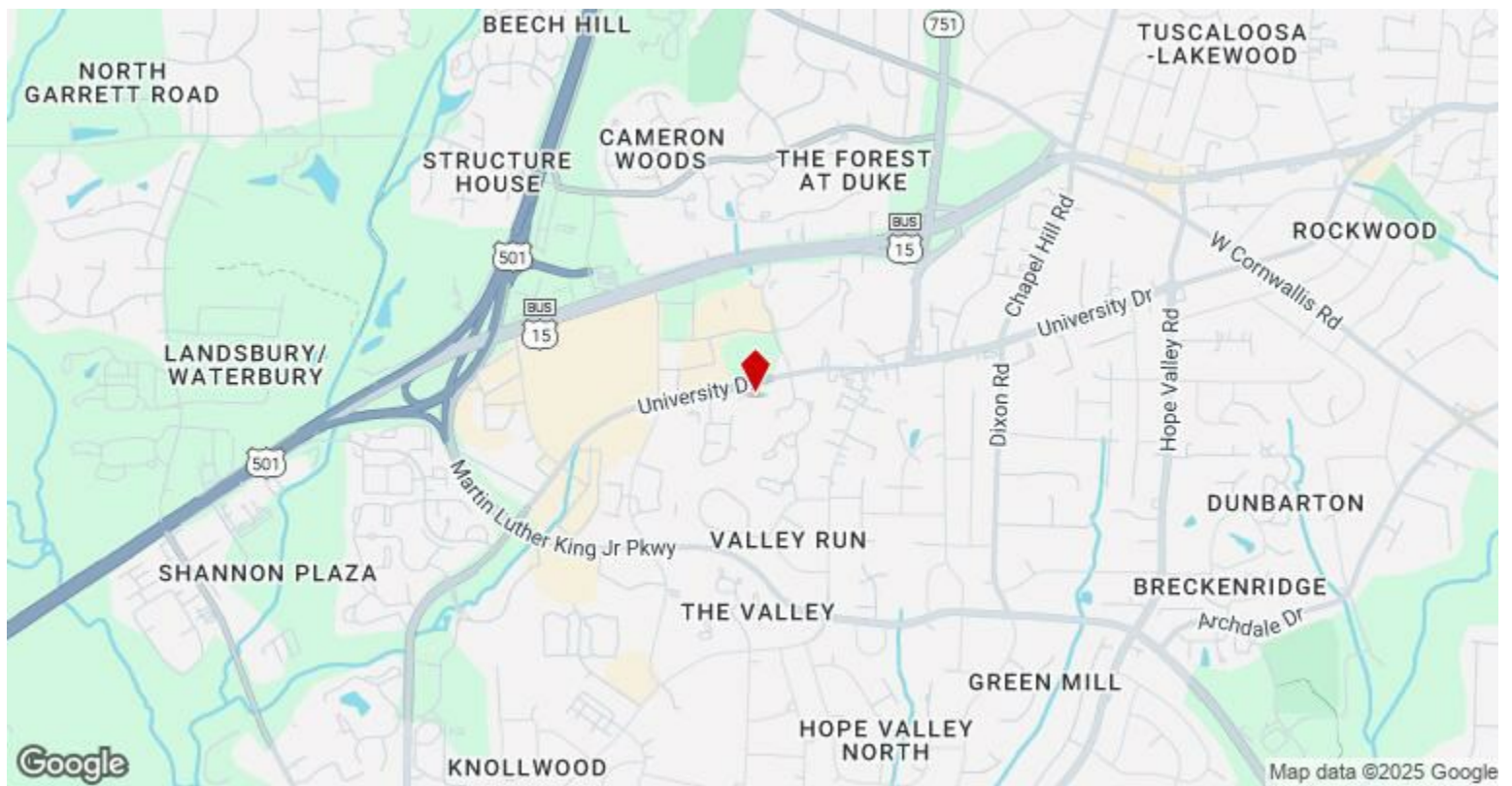
Space Available	1,895 SF
Rental Rate	\$19.00 /SF/YR
Date Available	December 04, 2025
Service Type	Triple Net (NNN)
Space Type	Direct
Space Use	Office
Lease Term	3 - 5 Years

Class B Condo for Lease — Ideal for Professional Service Firms. Prime location just minutes from Duke University and Downtown Durham, with convenient walking access to a nearby shopping center.

Features: 5 private offices; 1 large open work area; 1 Kitchen; 2 bathrooms.

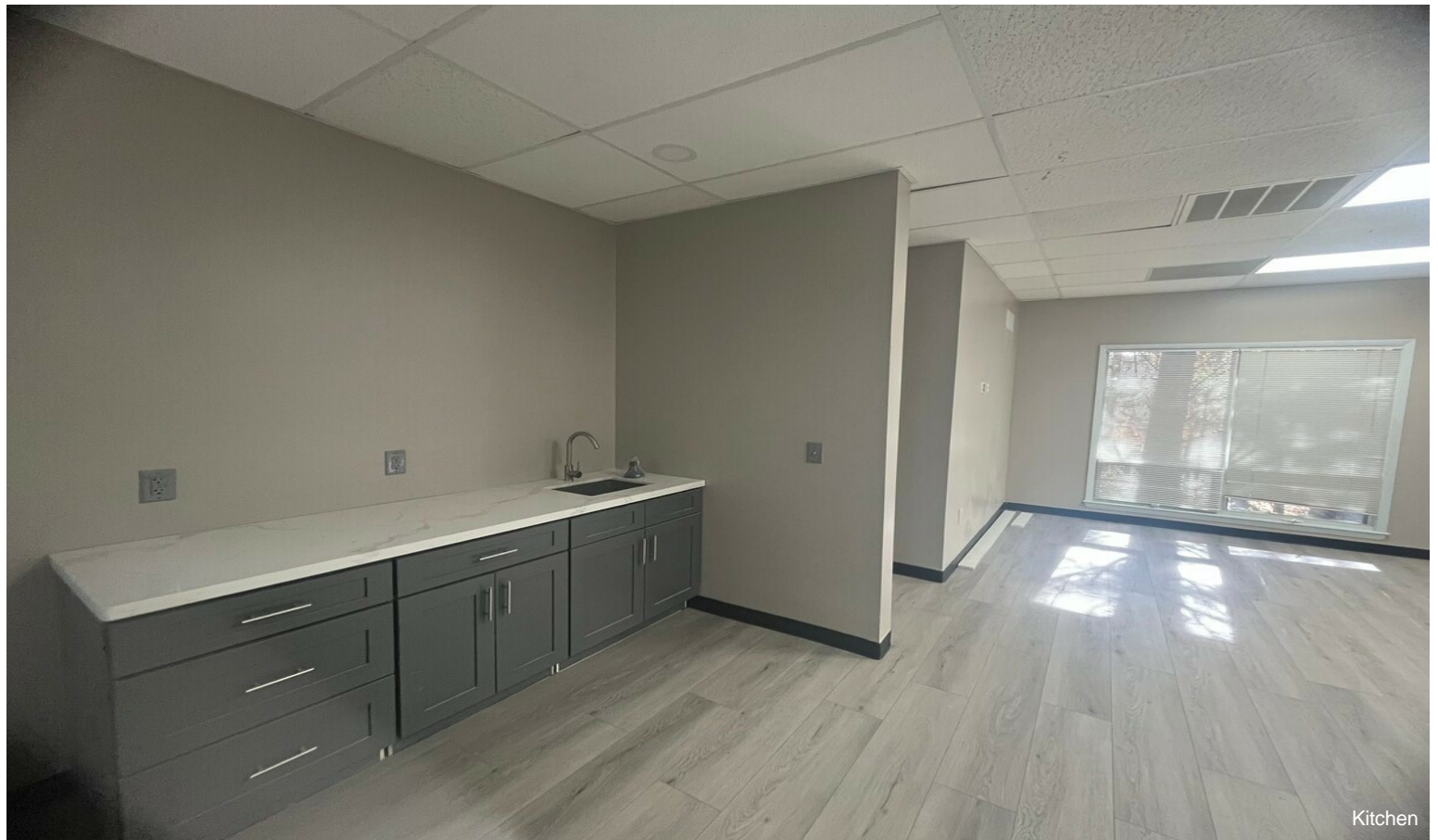
Perfect for law firms, medical or wellness practices, consulting groups, or other professional service companies seeking a well-located, efficient workspace.

The rent \$19/SF/YR does not include tax, utility, and management.



3715 University Dr, Durham, NC 27707

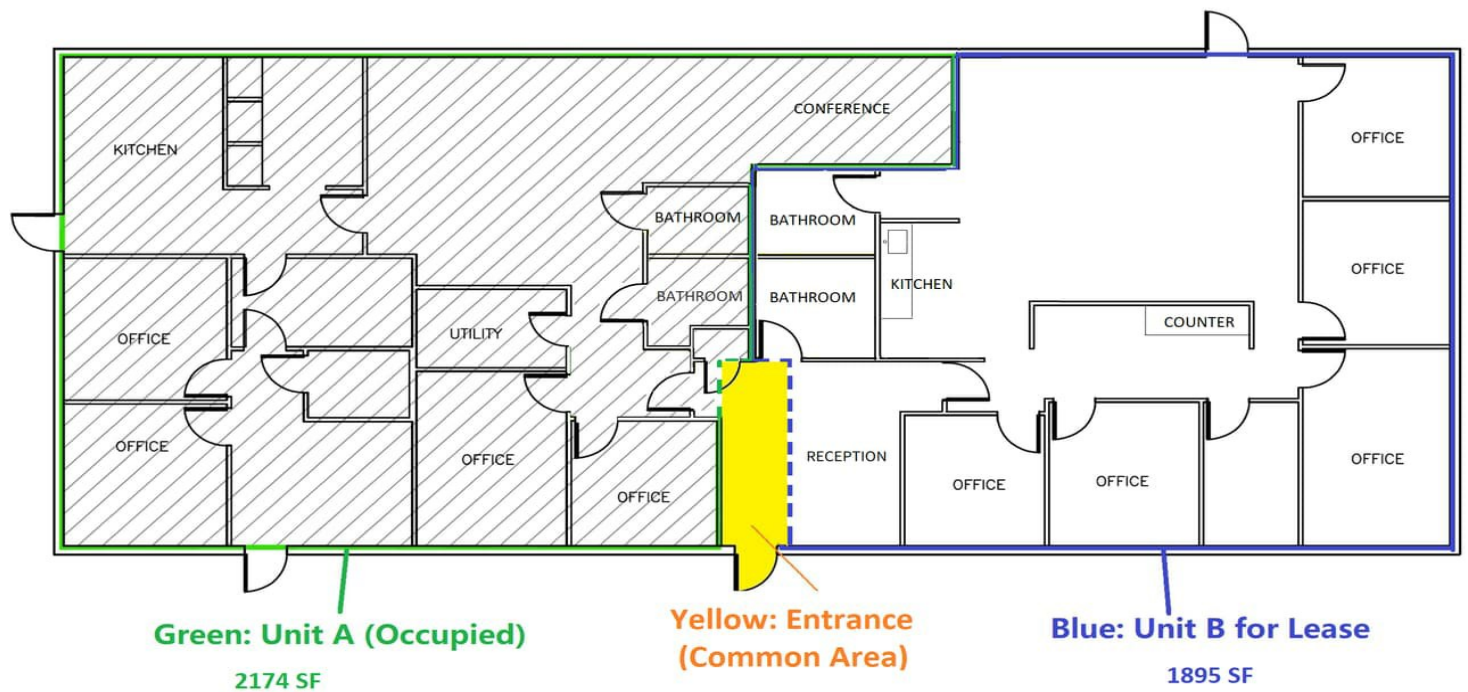
Property Photos



Property Photos



Property Photos



Property Photos

