



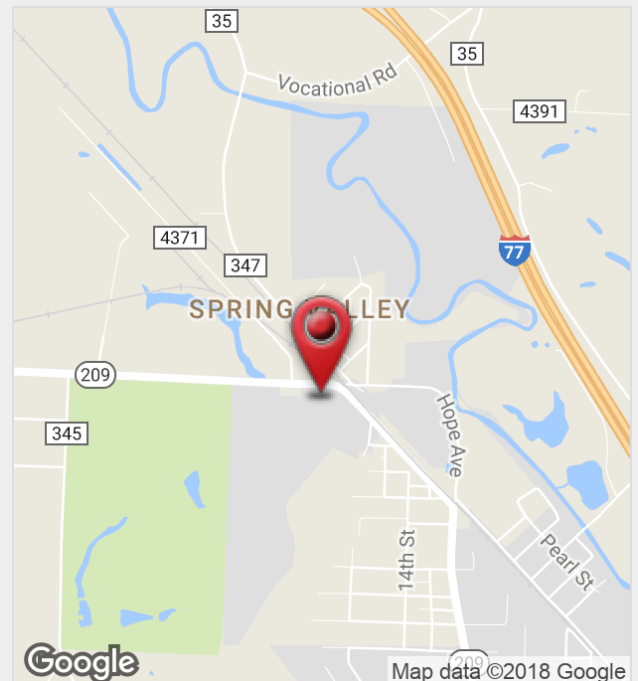
60691 Southgate Rd

Byesville, Ohio 43723

Property Features

- Build to suit
- 14.36 flat buildable acres
- All utilities on site
- Shovel ready
- Multiple points of access
- Located just south of I-70
- Adjacent to Cambridge Country Club
- Across Southgate Road from several large industrial users

Sale Price: \$2,995,000



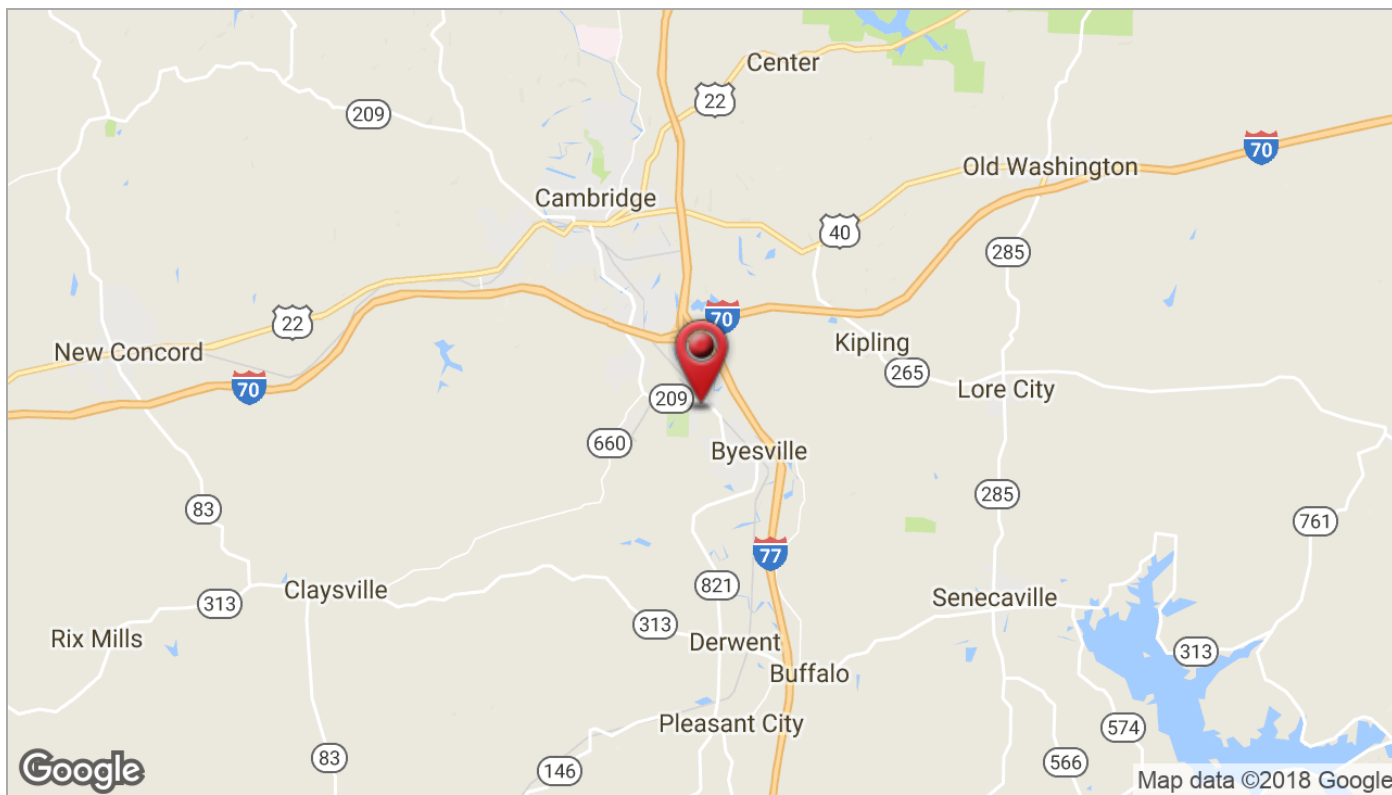
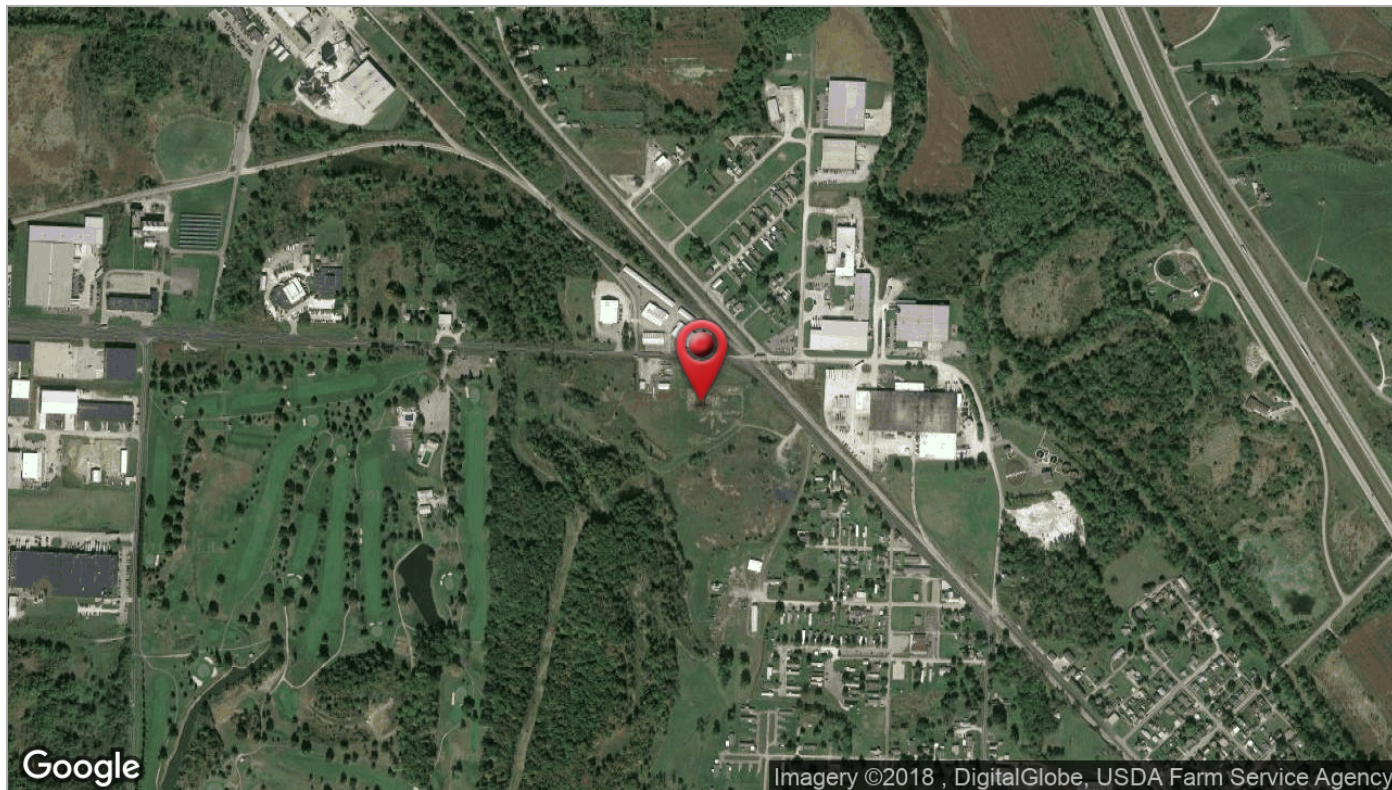
For more information:

Kim Benincasa

614 629 5280 • kbenincasa@ohioequities.com

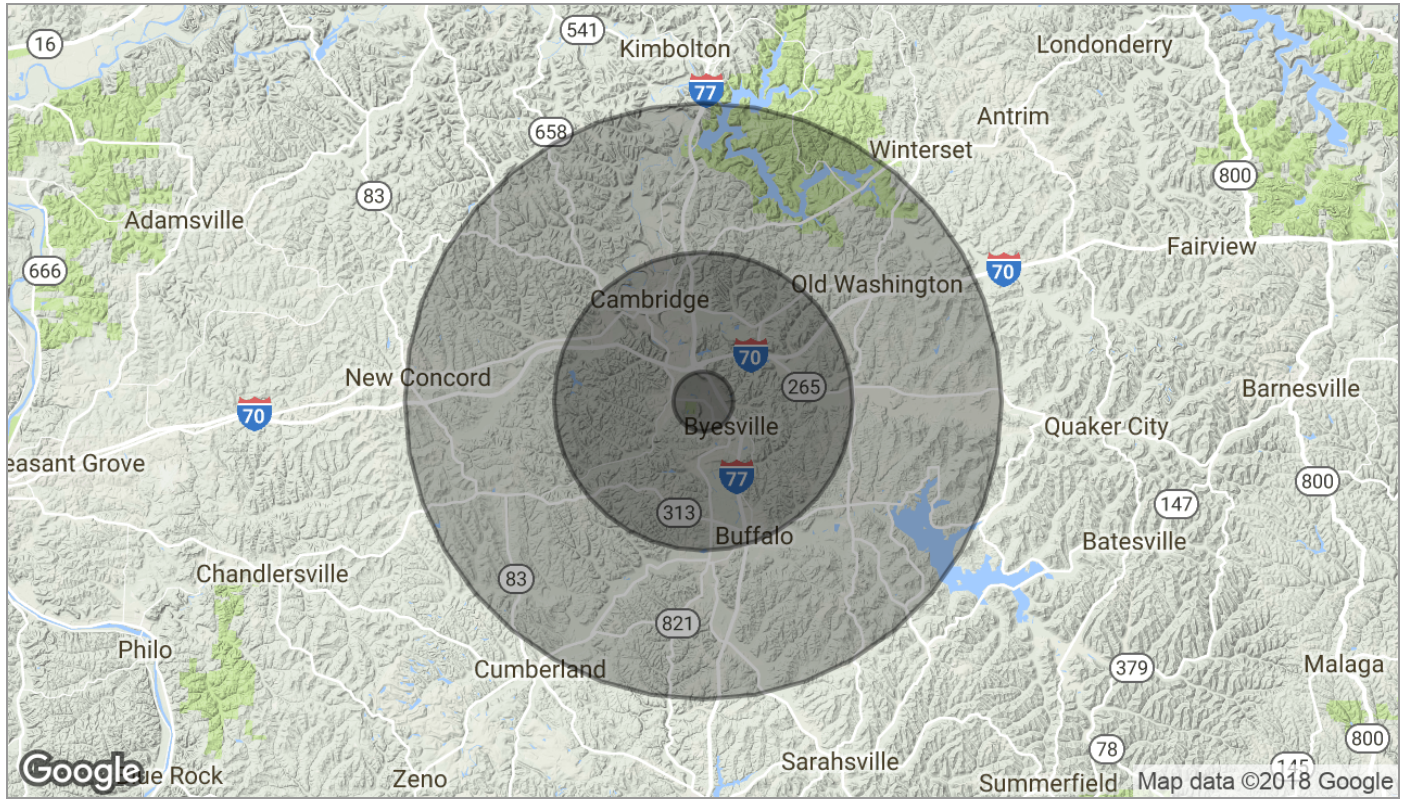
For Sale

Land



For Sale

Land



Population	1 Mile	5 Miles	10 Miles
TOTAL POPULATION	993	20,589	39,041
MEDIAN AGE	34.5	37.2	40.4
MEDIAN AGE (MALE)	31.0	34.2	37.9
MEDIAN AGE (FEMALE)	37.7	40.2	42.7

Households & Income	1 Mile	5 Miles	10 Miles
TOTAL HOUSEHOLDS	380	8,581	16,195
# OF PERSONS PER HH	2.6	2.4	2.4
AVERAGE HH INCOME	\$43,683	\$41,401	\$44,815
AVERAGE HOUSE VALUE	\$81,552	\$96,602	\$118,518

* Demographic data derived from 2010 US Census