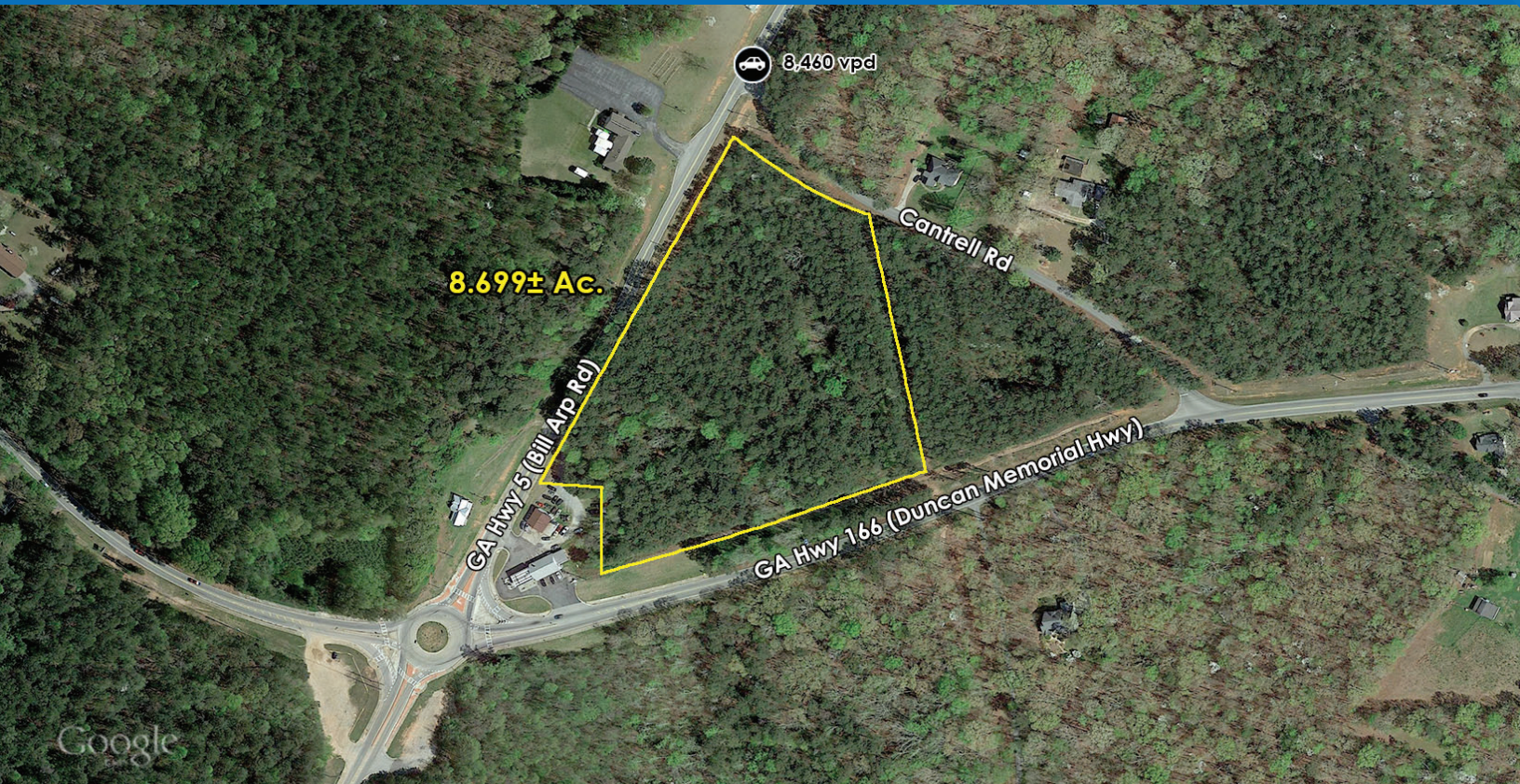


LAND FOR SALE

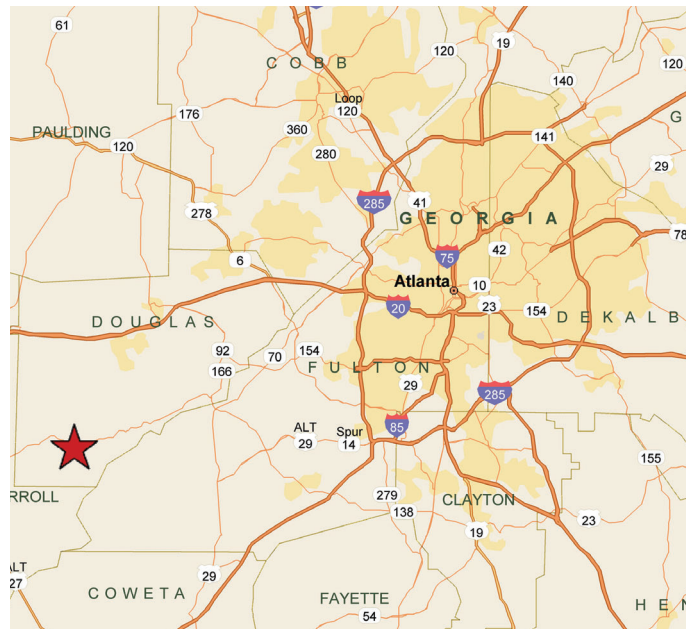
8.699± ACRES DEVELOPMENT OPPORTUNITY - S DOUGLAS CO

7016 HIGHWAY 5, DOUGLASVILLE, GA 30135



Property Details

- 8.699± acres total
- Property has frontage on GA Hwy 5, GA Hwy 166, and Cantrell Rd
- Currently zoned C-H (Commercial - Heavy District), but designated CVC (Community Village Center) on the County's Future Land Use map
- Located at the Northeast corner of GA Highway 5 and GA Highway 166
- List price: \$435,000 (\$50,000/ac)



Dan Buyers
770.596.2629
tdb@mcwrealty.com

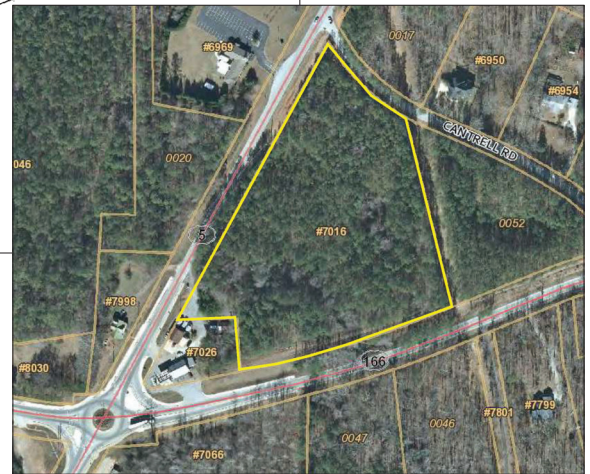
McWhirter Realty Partners, LLC
300 Galleria Parkway, Suite 300
Atlanta, GA 30339
770.955.2000 O | 770.933.2797 F
www.mcwrealty.com



LAND FOR SALE

8.7± ACRES DEVELOPMENT OPPORTUNITY - S DOUGLAS CO

7016 HIGHWAY 5, DOUGLASVILLE, GA 30135



Demographics

	1 mile	3 miles	5 miles
Population			
2024 Projection	808	7,346	16,951
2019 Estimate	748	6,794	15,817
2010 Census	592	5,312	13,223
Growth 2019-2024	8.02%	8.12%	7.17%
Growth 2010-2019	26.35%	27.90%	19.62%
Income			
2019 Avg Household Income	\$101,193	\$100,456	\$95,541
2019 Med Household Income	\$88,043	\$87,181	\$81,426

Dan Buyers
770.596.2629
tdb@mcwrealty.com

No warranty or representation, express or implied, is made as to the accuracy of the information contained herein, and same is subject to errors, omissions, change of price, rental or other conditions, withdrawal without notice, and to any special listing conditions, imposed by our principals.

McWhirter Realty Partners, LLC
300 Galleria Parkway, Suite 300
Atlanta, GA 30339
770.955.2000 O | 770.933.2797 F
www.mcwrealty.com

