



1517 Chestnut Street, Philadelphia, PA

# Center City ground floor retail available **for lease**

1,774 SF located in the heart of Center City with over 15,914 passersby per day. Situated near major retailers and traffic generators, including Wendy's, Five Guys, Popeye's, Five Below, J. Crew Factory, and Footlocker, is an ideal location for businesses seeking strong visibility.

## Larry Steinberg

Senior Managing Director  
+1 215 928 7593  
larry.steinberg@colliers.com

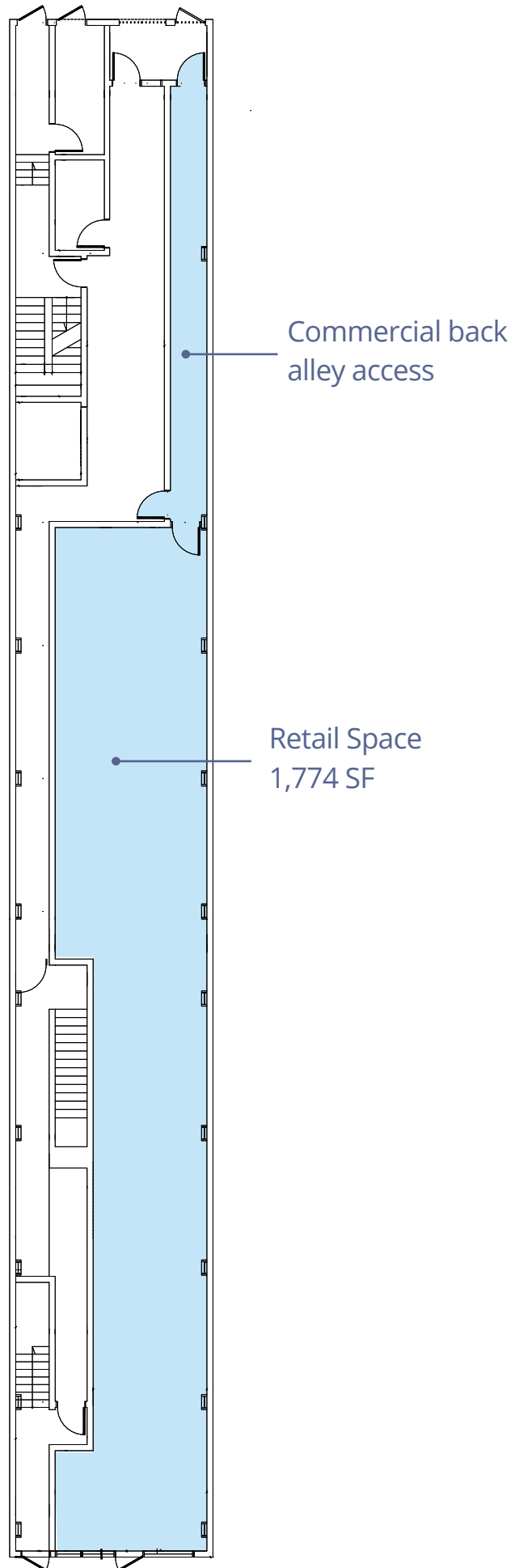
## Andrew Weinstein

Associate  
+1 215 928 7557  
andrew.weinstein@colliers.com



Accelerating success.

# Floor Plan



# Rittenhouse Square



**Contact us:**

**Larry Steinberg**  
Senior Managing Director  
+1 215 928 7593  
larry.steinberg@colliers.com

**Andrew Weinstein**  
Associate  
+1 215 928 7557  
andrew.weinstein@colliers.com

1517 Chestnut St.

Demographic	1/4 Mile	1/2 Mile	1 Mile
Population	7,697	34,093	102,264
Households	5,325	22,374	60,299
Average HHI	\$176,112	\$149,254	\$151,106
Employees	76,687	173,590	257,076

Information herein has been obtained from sources deemed reliable, however its accuracy cannot be guaranteed. The user is required to conduct their own due diligence and verification.

**Colliers Philadelphia**  
2005 Market Street, Suite 4010  
Philadelphia, PA 19103  
+1 215 925 4600  
colliers.com/philadelphia