



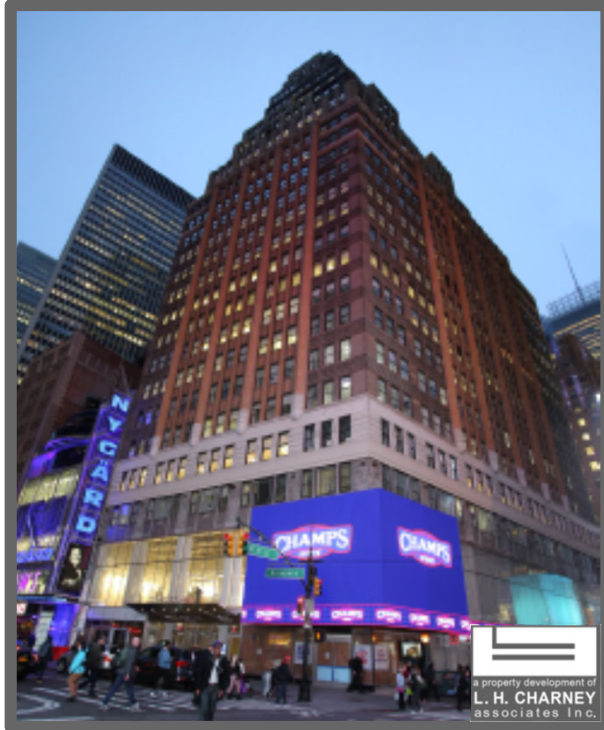
A BANYAN STREET
CAPITAL COMPANY

10 Times Square

a.k.a 1441 Broadway



a property development of
L. H. CHARNEY
associates Inc.

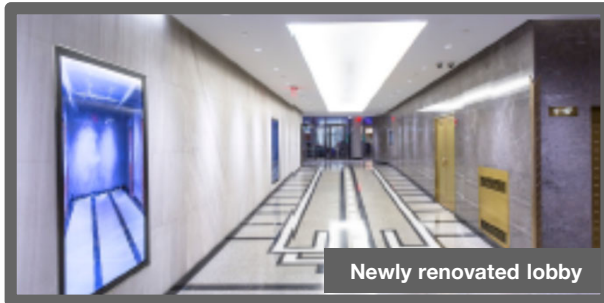


Available Space

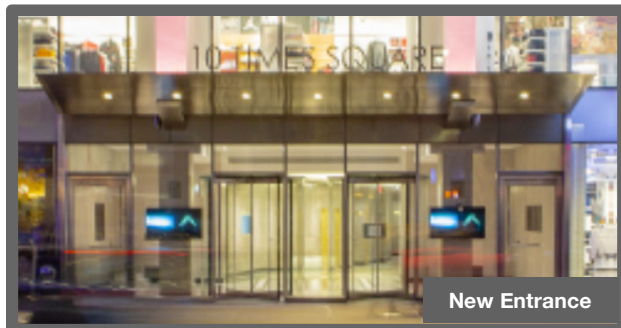
| Space | RSF | |
|-------------------------|--------|------------------|
| Entire 7 th | 21,711 | N.B.I Offered |
| Suite 802 | 13,335 | Showroom |
| Suite 2401 | 2,662 | N.B.I Offered |
| Entire 30 th | 7,489 | Showroom/T.A.M.I |
| Suite 3101 | 3,562 | Office/T.A.M.I |
| Entire 34 th | 4,593 | Showroom/T.A.M.I |

BUILDING HIGHLIGHTS

- \$30 Million in capital improvements completed including a renovated lobby and a new 2 story glass facade
- High speed smart elevator systems
- Centrally located between Times Square, PATH, Penn Station and Bryant Park



Newly renovated lobby



New Entrance

Rent: Upon Request

Possession: Immediately

Term: Negotiable

Electric: Submetered

MHPNYC.COM

RICHARD DOOLITTLE
212.944.4747 | rdoolittle@mhpnyc.com

JOHN P. HOWARD
212.763.4406 | jhoward@mhpnyc.com

All information is from sources deemed reliable but is subject to errors or omissions of any magnitude, withdrawal from market, or change in terms, all without notice. Brokers employment & payment only by written agreement.



A BANYAN STREET
CAPITAL COMPANY

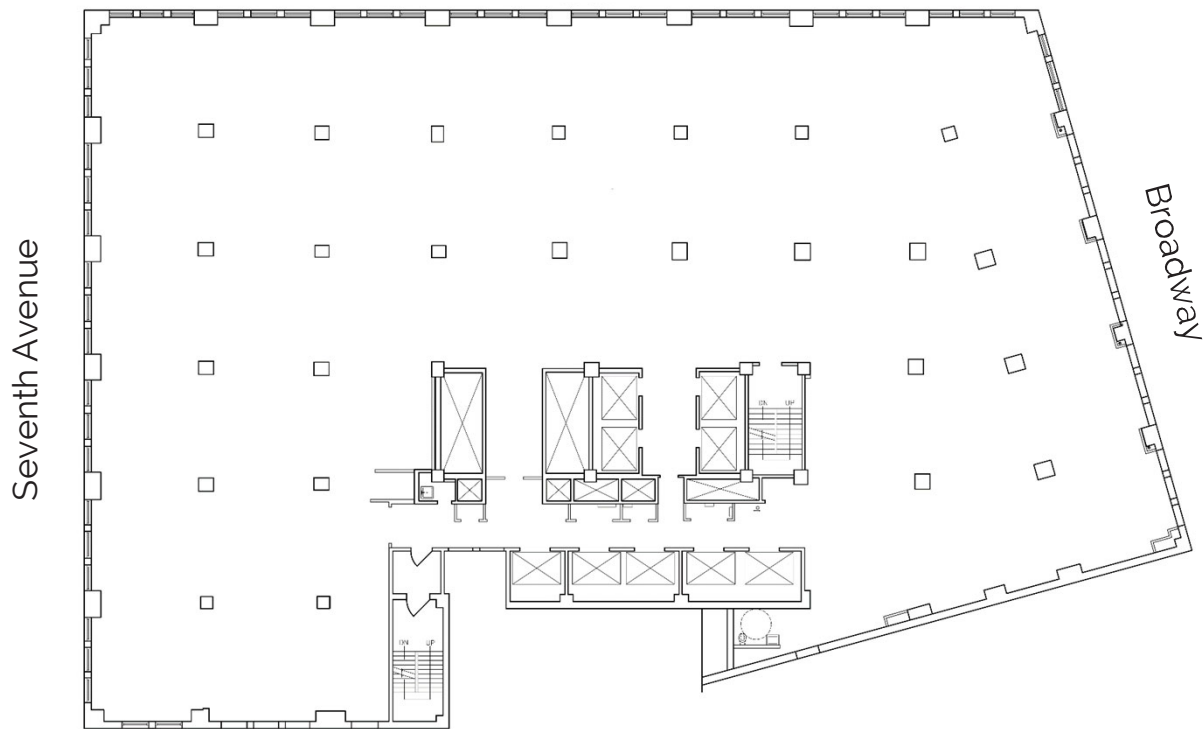
10 Times Square

a.k.a 1441 Broadway



a property development of
L. H. CHARNEY
associates Inc.

41st Street



1441 Broadway – Entire 7th Floor
21,711 RSF

MHPNYC.COM

RICHARD DOOLITTLE
212.944.4747 | rdoolittle@mhpny.com

JOHN P. HOWARD
212.763.4406 | jhoward@mhpny.com



A BANYAN STREET
CAPITAL COMPANY

10 Times Square

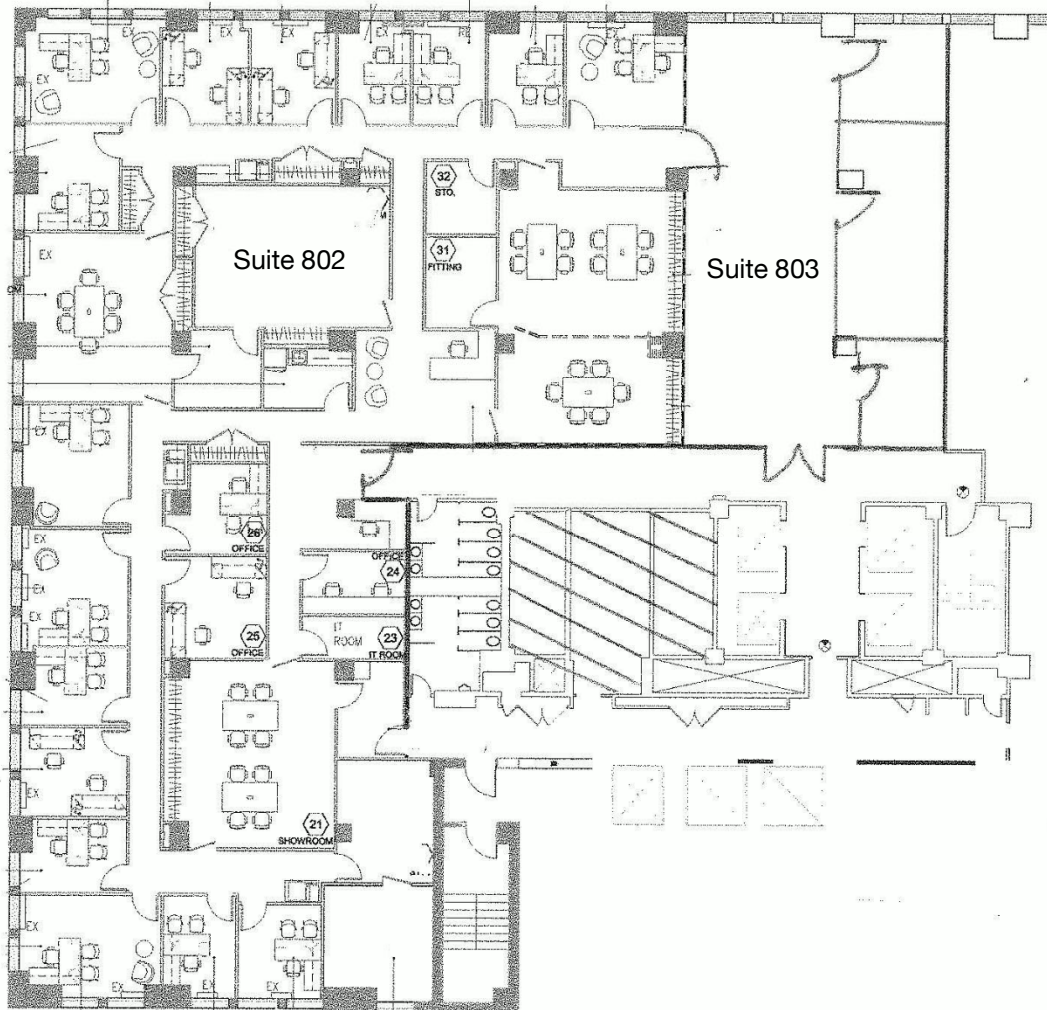
a.k.a 1441 Broadway



a property development of
L. H. CHARNEY
associates Inc.

41st Street

Seventh Avenue



1441 Broadway - Suite 802 & 803

13,335 RSF

MHPNYC.COM

RICHARD DOOLITTLE
212.944.4747 | rdoolittle@mhpnyc.com

JOHN P. HOWARD
212.763.4406 | jhoward@mhpnyc.com



A BANYAN STREET
CAPITAL COMPANY

10 Times Square

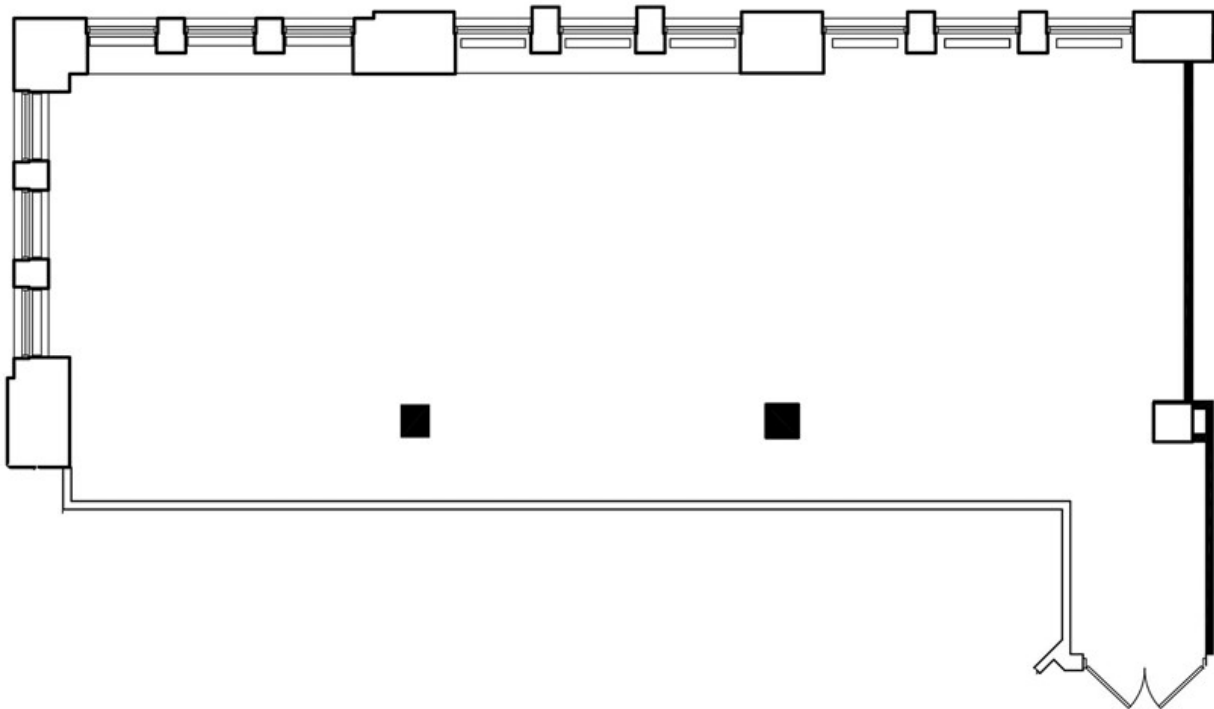
a.k.a 1441 Broadway



a property development of
L. H. CHARNEY
associates Inc.

41st Street

Seventh Avenue



1441 Broadway - Suite 2401

2,662 RSF

MHPNYC.COM

RICHARD DOOLITTLE
212.944.4747 | rdoolittle@mhpny.com

JOHN P. HOWARD
212.763.4406 | jhoward@mhpny.com



A BANYAN STREET
CAPITAL COMPANY

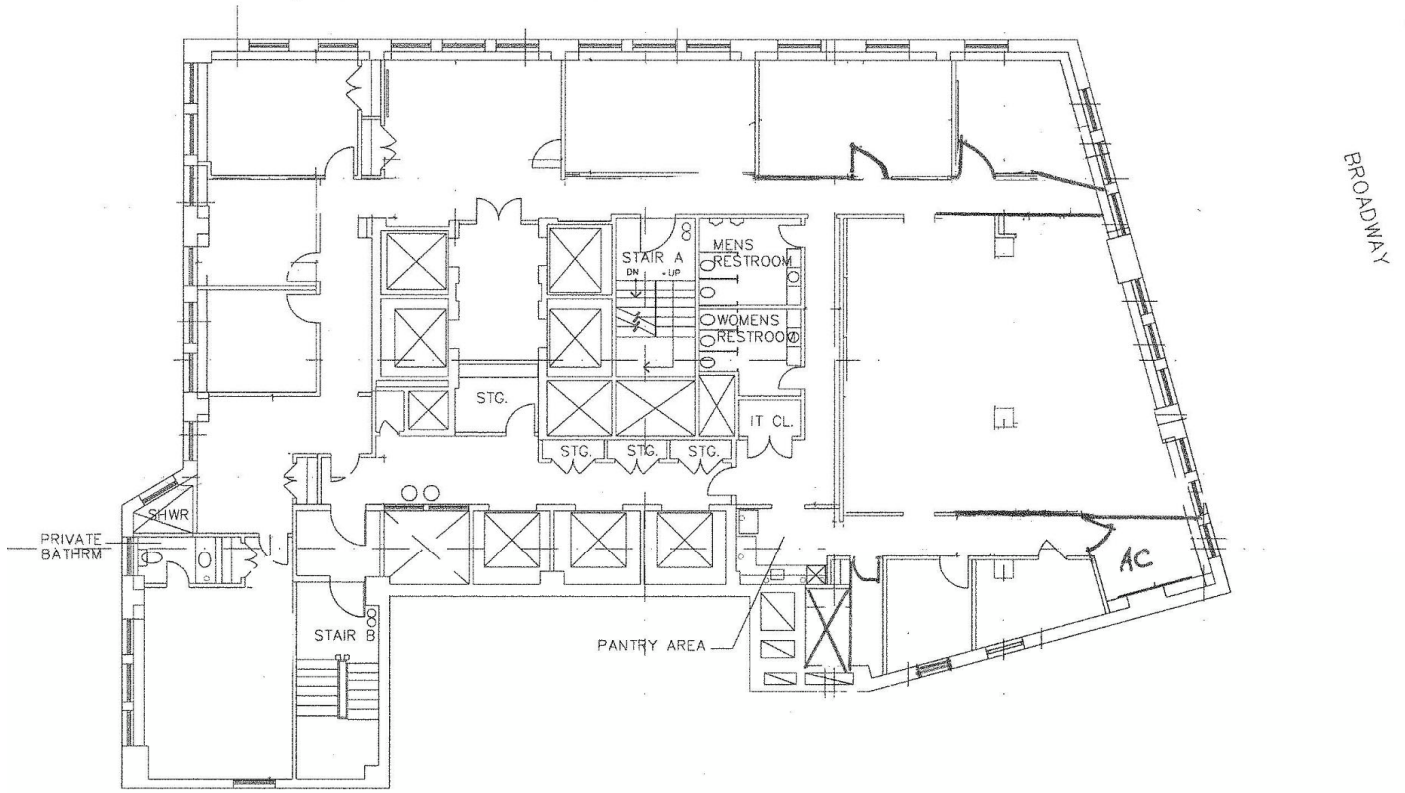
10 Times Square

a.k.a 1441 Broadway



a property development of
L. H. CHARNEY
associates Inc.

WEST 41ST STREET



1441 Broadway – Entire 30th Floor
7,489 RSF

MHPNYC.COM

RICHARD DOOLITTLE
212.944.4747 | rdoolittle@mhpny.com

JOHN P. HOWARD
212.763.4406 | jhoward@mhpny.com



A BANYAN STREET
CAPITAL COMPANY

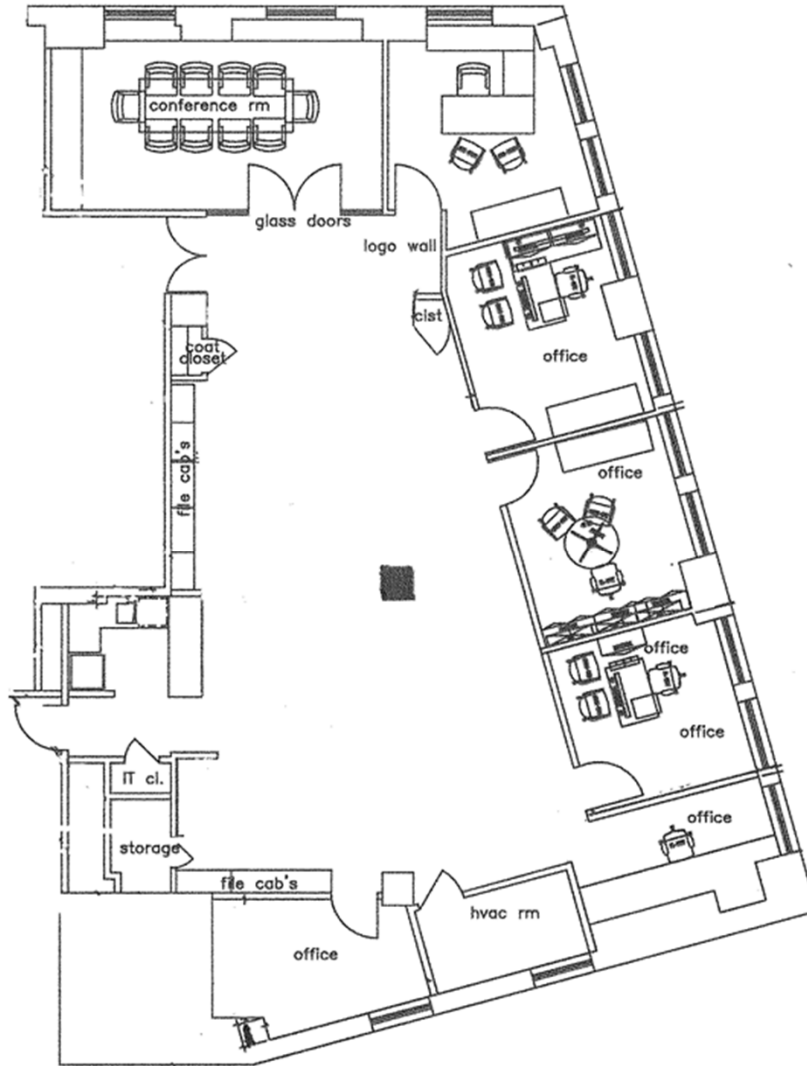
10 Times Square

a.k.a 1441 Broadway



a property development of
L. H. CHARNEY
associates Inc.

41st Street



Broadway

1441 Broadway - Suite 3101

3,562 RSF

MHPNYC.COM

RICHARD DOOLITTLE
212.944.4747 | rdoolittle@mhpny.com

JOHN P. HOWARD
212.763.4406 | jhoward@mhpny.com



A BANYAN STREET
CAPITAL COMPANY

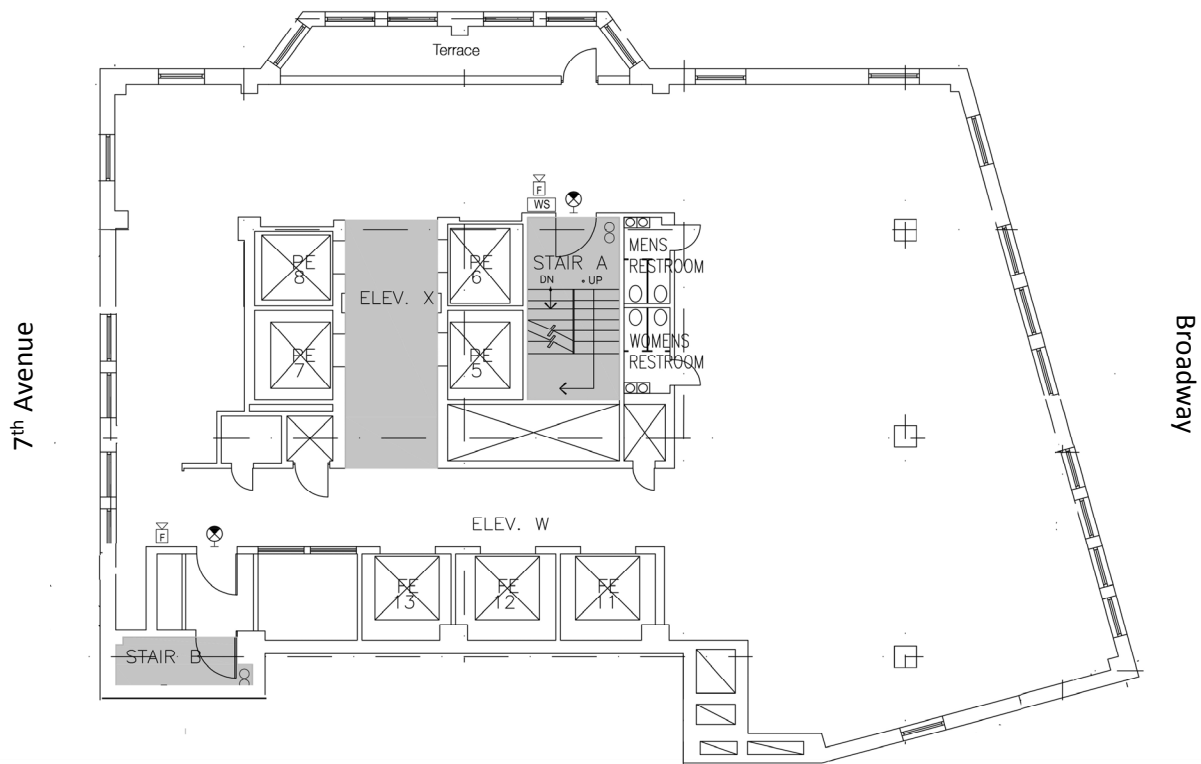
10 Times Square

a.k.a 1441 Broadway



a property development of
L. H. CHARNEY
associates Inc.

West 41st Street



1441 Broadway – Entire 34th Floor
4,593 RSF

MHPNYC.COM

RICHARD DOOLITTLE
212.944.4747 | rdoolittle@mhpnyc.com

JOHN P. HOWARD
212.763.4406 | jhoward@mhpnyc.com