

2217 SAN RAMON
VALLEY BLVD

2211 SAN RAMON
VALLEY BLVD

2205 SAN RAMON
VALLEY BLVD

SAN RAMON BLVD - 168,000+ ADT

PURDUE RD

SAN RAMON SQUARE

*±900 SF - ±2,400 SF Retail Available For Lease
Located in the City of San Ramon*

2205, 2211 & 2217 SAN RAMON VALLEY BLVD, SAN RAMON, CA 94583

EMMA HIMSL
HIMSL Real Estate
925.989.2384
emma@himsrealstate.com
LIC N° 02108950

WILL BALLOWE
Kidder Mathews
925.389.2499
will.ballowe@kidder.com
LIC N° 02053125

SAN RAMON SQUARE

CURRENT AVAILABILITY

2211 Suite E - ±1,200 SF - former salon space

2211 Suite G - ±2,400 SF - 2nd generation restaurant, space features hood and grease top

2217 Suite L - ±900 SF - 2nd generation sushi restaurant

2217 Suite M/N - ±1,200 SF

PROPERTY HIGHLIGHTS

Diverse mix of tenants

Ample parking

Flexible lease terms

A full 3% procuring fee to brokers

LOCATION HIGHLIGHTS

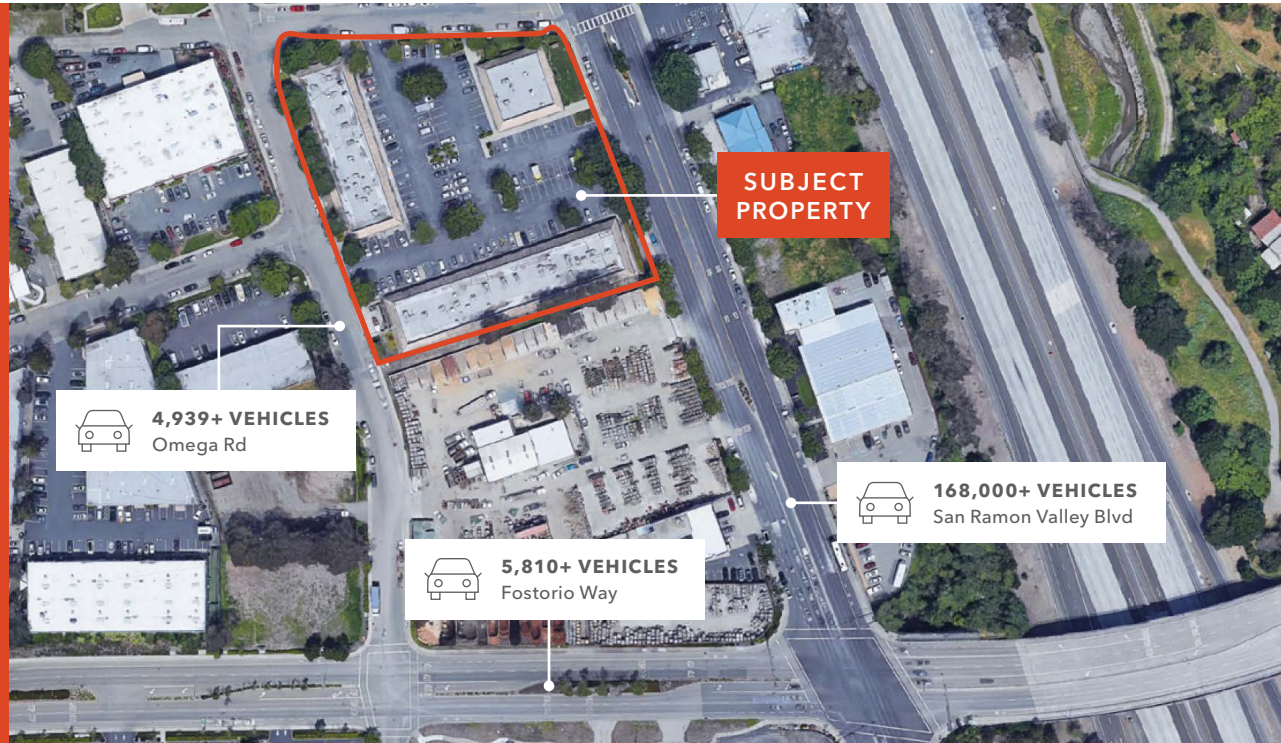
Hard corner location

High traffic counts

Located within one mile from I-680

Affluent demographic

Entry to new preserve project



SITE PLAN



2211 SUITE E

±1,200 SF

AVAILABLE

CALL

BROKER FOR LEASE RATE

NOW

AVAILABLE



2217 SUITE M/N

±1,200 SF

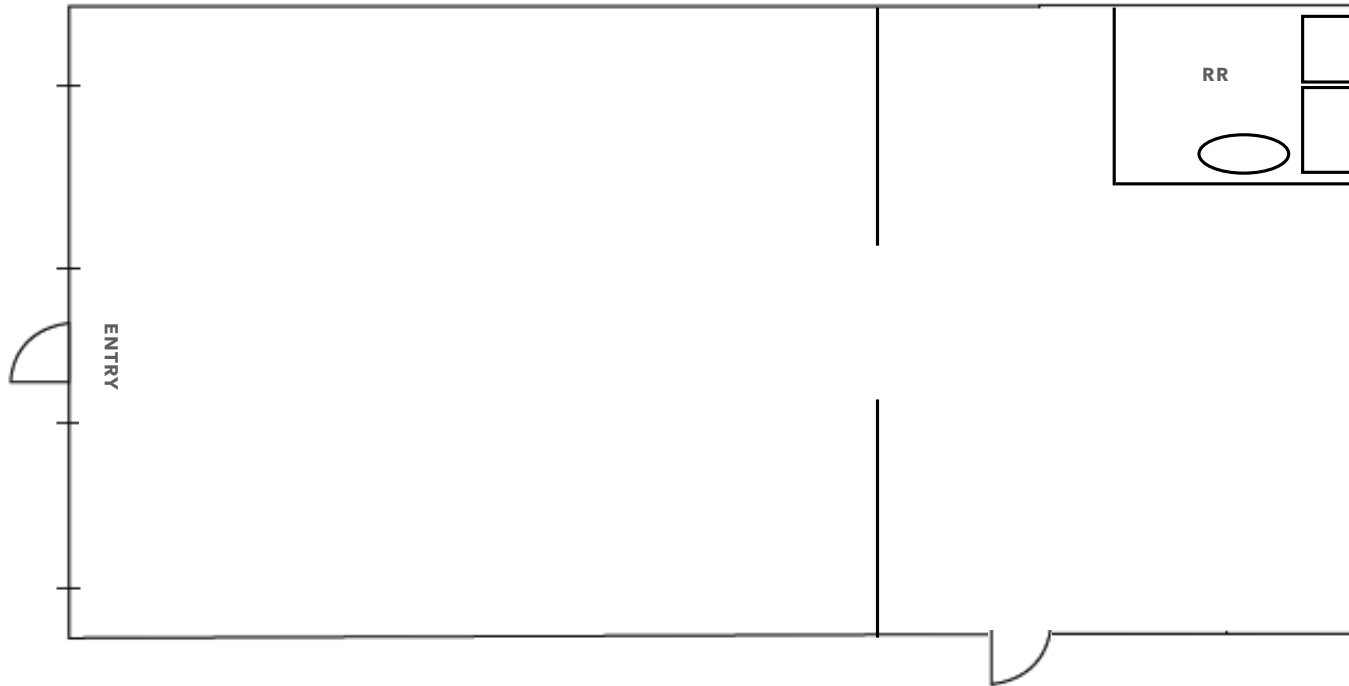
AVAILABLE

CALL

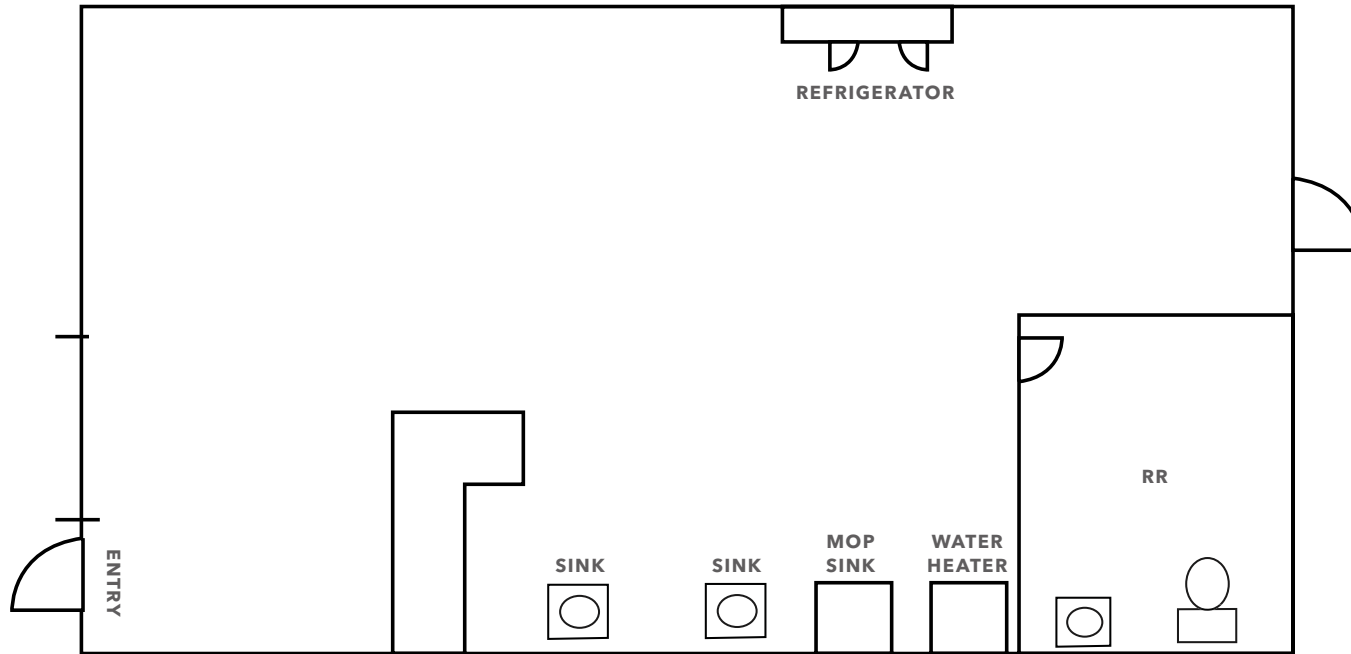
BROKER FOR LEASE RATE

NOW

AVAILABLE



2217 SUITE L

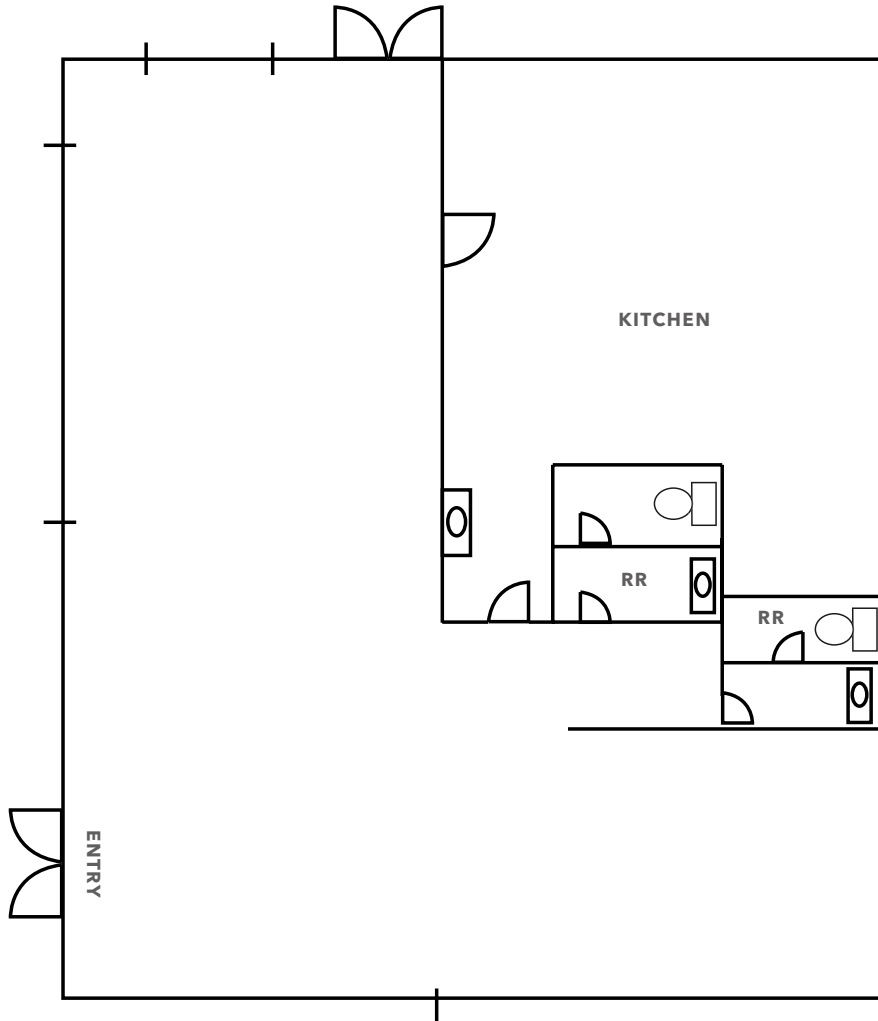


±900 SF
AVAILABLE

CALL
BROKER FOR LEASE RATE

NOW
AVAILABLE

2211 SUITE G



±2,400 SF

AVAILABLE

CALL

BROKER FOR LEASE RATE

NOW

AVAILABLE

SAN RAMON SQUARE



DEMOGRAPHICS

POPULATION

	1 Mile	3 Miles	5 Miles
2023 POPULATION	11,274	60,487	135,310

HOUSEHOLD INCOME

	1 Mile	3 Miles	5 Miles
ESTIMATED AVERAGE HH INCOME	\$171,957	\$222,925	\$245,442
HH INCOME DISTRIBUTION	1,343	8,818	20,612

MEDIAN HOME VALUE

	1 Mile	3 Miles	5 Miles
\$100,000 OR MORE	679	6,838	17,956

COLLEGE DEGREE

	1 Mile	3 Miles	5 Miles
BACHELOR DEGREE OR HIGHER	5,553	30,174	65,828

TOTAL RETAIL

	1 Mile	3 Miles	5 Miles
EXPENDITURES	\$221.79M	\$1.36B	\$3.13B

Data Source: ©2023, Sites USA





Exclusively listed by

EMMA HIMSL

HIMSL Real Estate

925.989.2384

emma@himsldrealestate.com

LIC N° 02108950

WILL BALLOWE

Kidder Mathews

925.905.1118

will.ballowe@kidder.com

LIC N° 02053125

KIDDER.COM

This information supplied herein is from sources we deem reliable. It is provided without any representation, warranty, or guarantee, expressed or implied as to its accuracy. Prospective Buyer or Tenant should conduct an independent investigation and verification of all matters deemed to be material, including, but not limited to, statements of income and expenses. Consult your attorney, accountant, or other professional advisor.

HIMSL
REAL ESTATE

km Kidder
Mathews