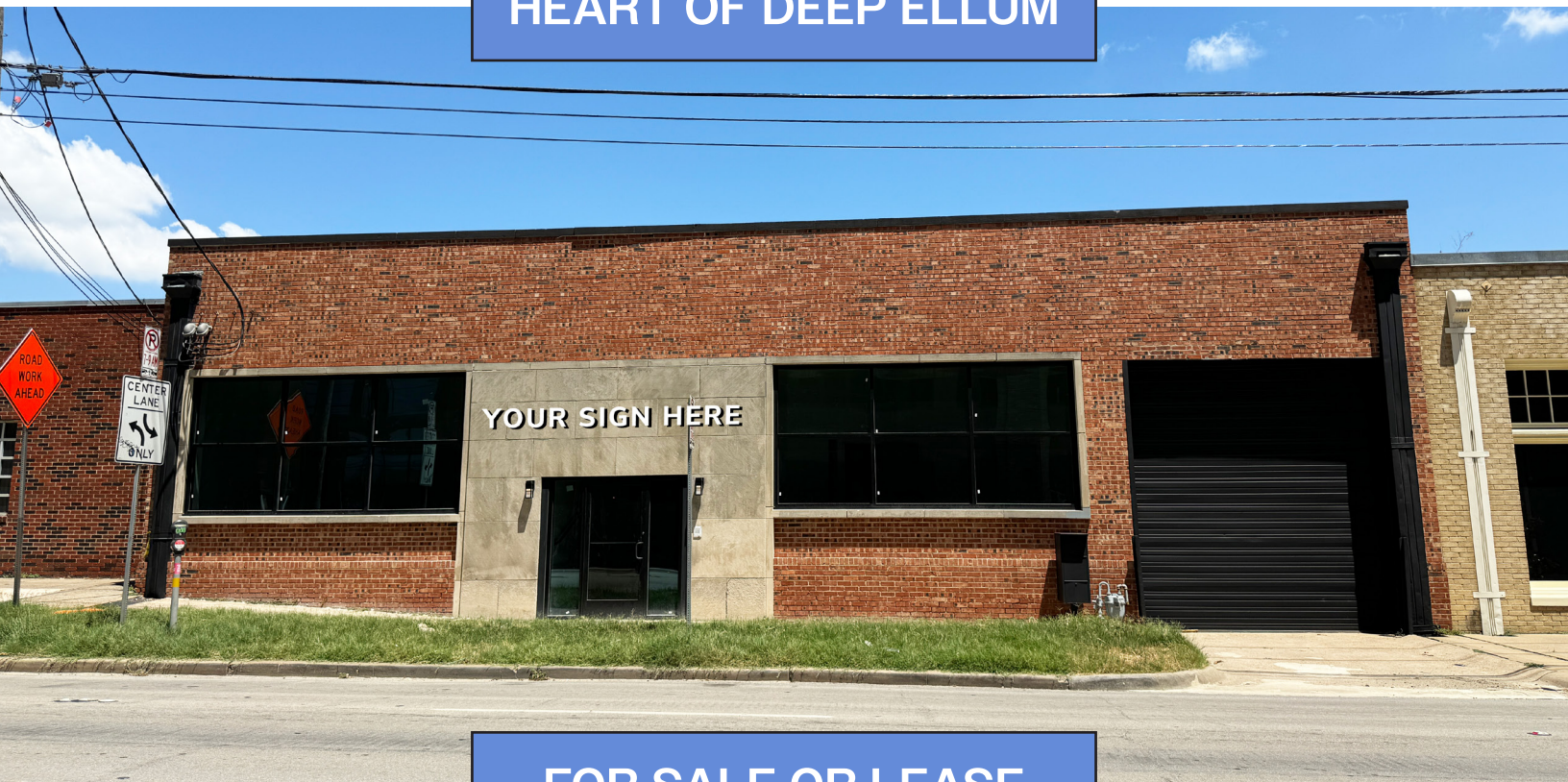


# 2019 CANTON STREET

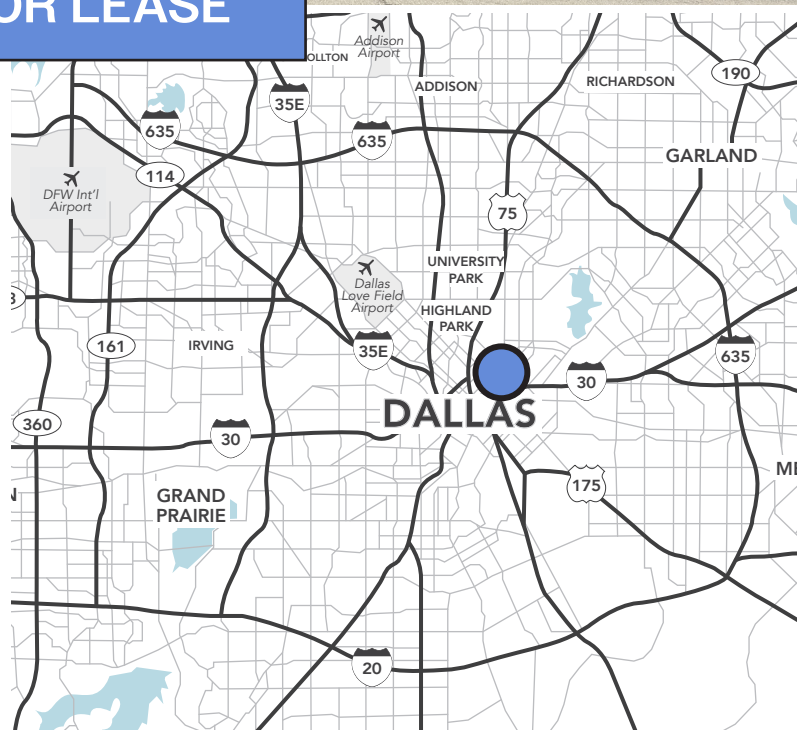
HEART OF DEEP ELLUM



FOR SALE OR LEASE

## PROPERTY HIGHLIGHTS

- 7,766 SF creative office / showroom space with a small warehouse component
- Rear oversized grade level door
- Full kitchen with refrigerator, oven, stove top, and ample cabinet space
- 7 dedicated parking spaces with additional street parking available
- Located in the heart of Deep Ellum
- Partial HVAC Warehouse



**BRANDON DELIN**

214.210.1365

brandon.delin@streamrealty.com

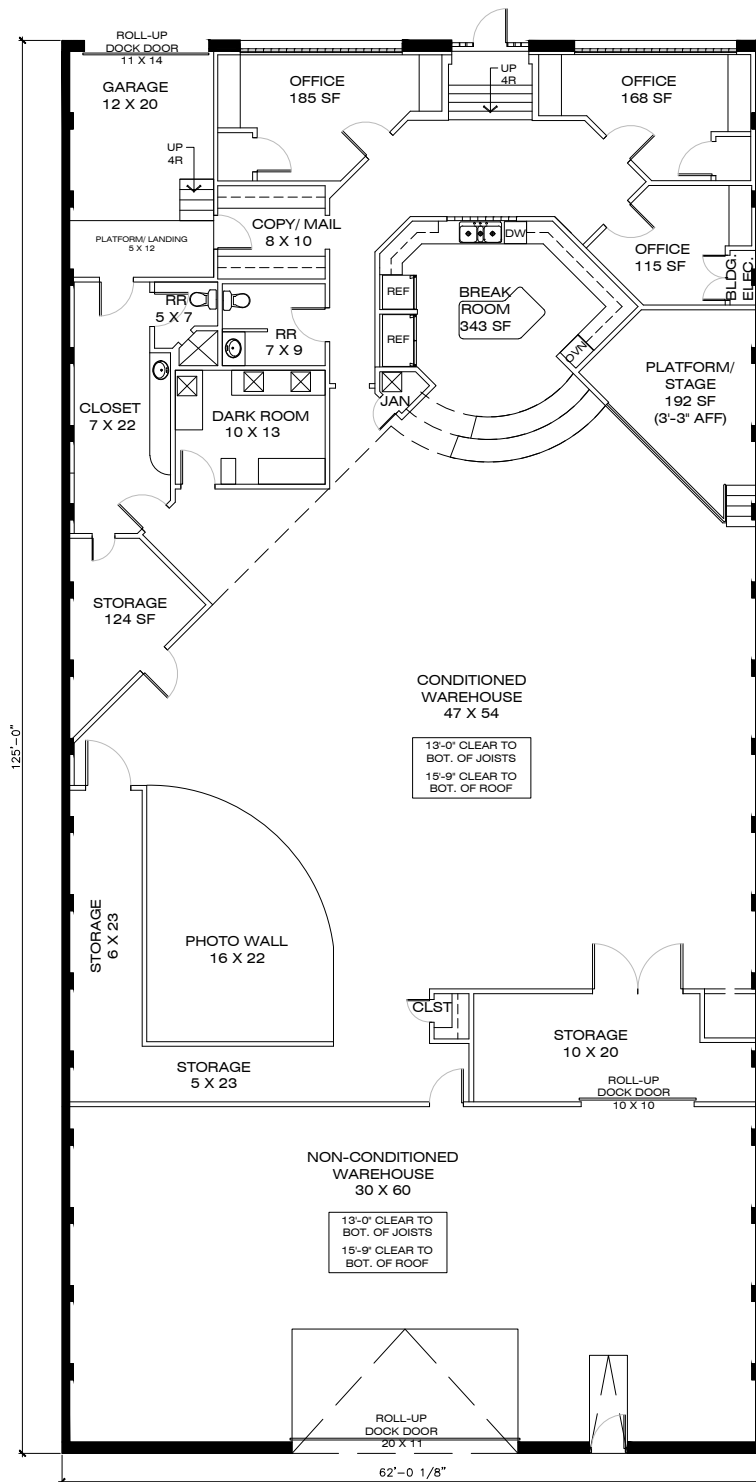
**GIOVANNI SCARDINO**

847.612.8488

giovanni.scardino@streamrealty.com

**STREAM**

# 2919 CANTON STREET



**BRANDON DELIN**

214.210.1365

brandon.delin@streamrealty.com

**GIOVANNI SCARDINO**

847.612.8488

giovanni.scardino@streamrealty.com





# 2019 CANTON STREET



**BRANDON DELIN**  
214.210.1365  
brandon.delin@streamrealty.com

**GIOVANNI SCARDINO**  
847.612.8488  
giovanni.scardino@streamrealty.com

