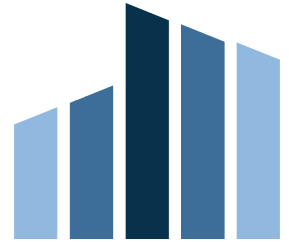


LAND FOR SALE

AIRPORT LAND

2368 GENERAL PERRY SMITH PKWY, AUGUSTA, GA 30906



SALE PRICE

\$1,312,750

Property Name: Airport Land
Property Address: 2368 General Perry Smith Pkwy, Augusta,
GA 30906
Property Type: Land
APN: 172-0-001-00-0
Lot Size: 52.51 AC

PROPERTY OVERVIEW

52 acres of industrial land available directly beside the Augusta airport. Multiple access points available along General Perry Smith Pkwy. Land can be subdivided based on specific needs of user. Many large industrial sites nearby, including International Paper, Textron, Kellogg's, and Starbucks Regional Plant.

LOCATION OVERVIEW

Directly off Doug Barnard Pkwy, neighboring Augusta Regional Airport. Only a few miles from I-520 exit.



SOUTHEASTERN

DEVELOPMENT · BROKERAGE · CONSULTING

Presented By:

Chris Senn
Vice President
706.854.6728

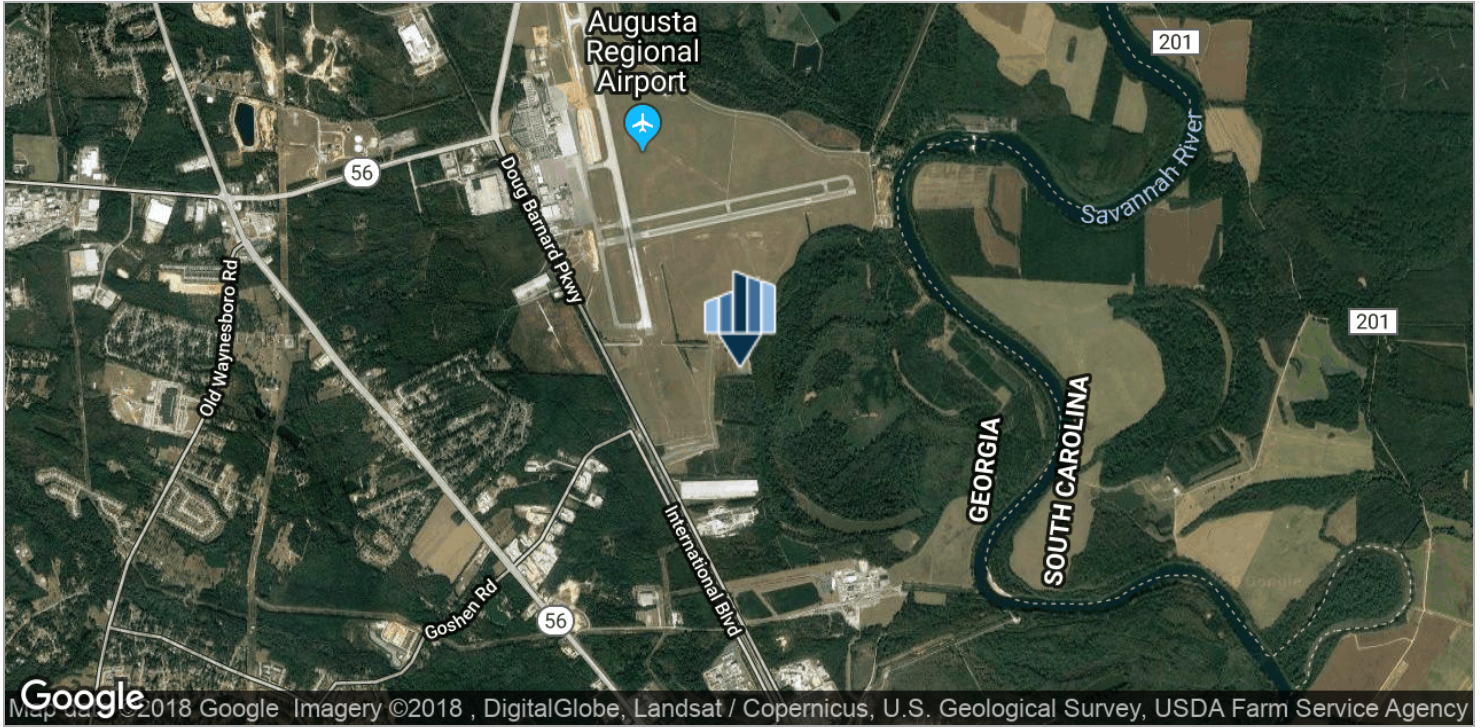
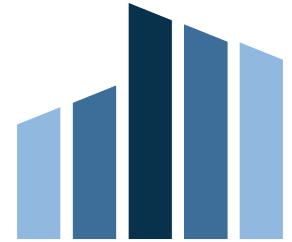
Tyler Martin
Sales Associate
706.854.6703

chris.senn@southeastern.company tyler.martin@southeastern.company

LAND FOR SALE

AIRPORT LAND

2368 GENERAL PERRY SMITH PKWY, AUGUSTA, GA 30906



SOUTHEASTERN

DEVELOPMENT • BROKERAGE • CONSULTING

Presented By:

Chris Senn
Vice President
706.854.6728

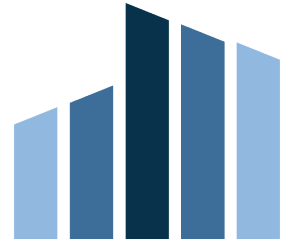
Tyler Martin
Sales Associate
706.854.6703

chris.senn@southeastern.company tyler.martin@southeastern.company

LAND FOR SALE

AIRPORT LAND

2368 GENERAL PERRY SMITH PKWY, AUGUSTA, GA 30906



SOUTHEASTERN

DEVELOPMENT • BROKERAGE • CONSULTING

Presented By:

Chris Senn
Vice President
706.854.6728

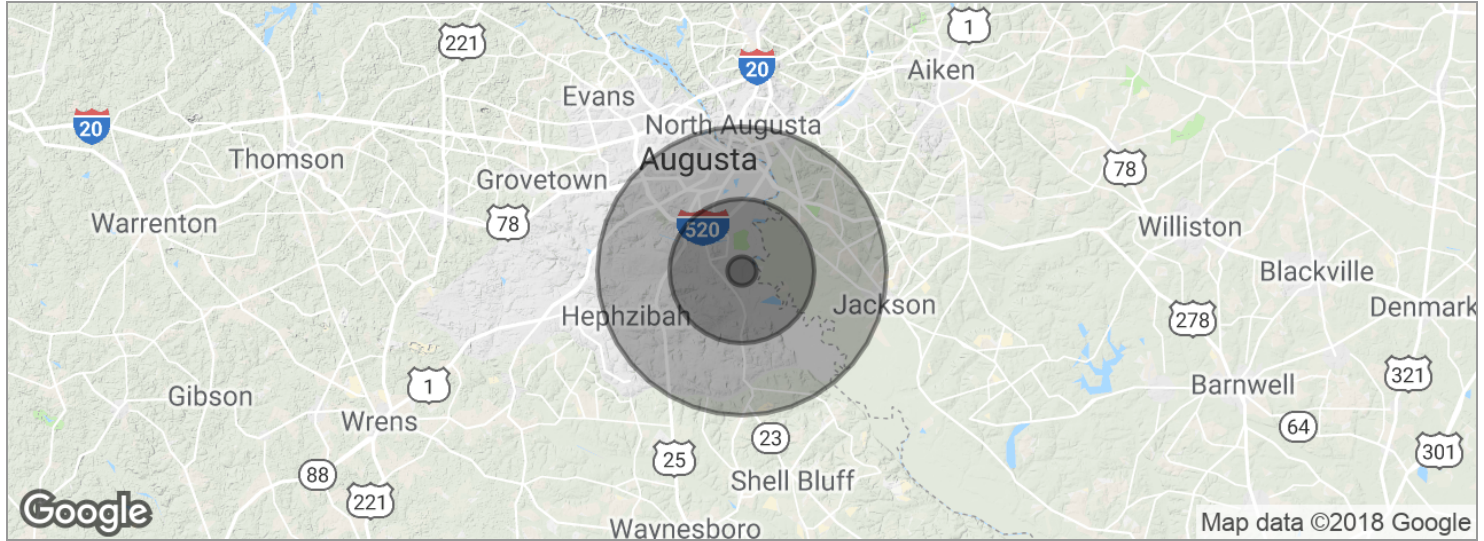
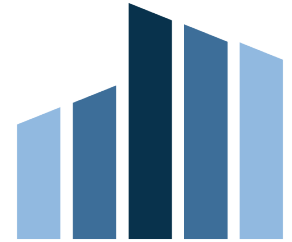
Tyler Martin
Sales Associate
706.854.6703

chris.senn@southeastern.company tyler.martin@southeastern.company

LAND FOR SALE

AIRPORT LAND

2368 GENERAL PERRY SMITH PKWY, AUGUSTA, GA 30906



POPULATION	1 MILE	5 MILES	10 MILES
Total population	737	21,872	168,873
Median age	31.8	35.0	34.6
Median age (male)	29.7	32.8	32.4
Median age (Female)	33.1	37.3	36.5
HOUSEHOLDS & INCOME	1 MILE	5 MILES	10 MILES
Total households	235	6,860	63,823
# of persons per HH	3.1	3.2	2.6
Average HH income	\$34,652	\$49,102	\$45,689
Average house value	\$99,632	\$114,879	\$114,983

* Demographic data derived from 2010 US Census



SOUTHEASTERN

DEVELOPMENT • BROKERAGE • CONSULTING

Presented By:

Chris Senn
Vice President
706.854.6728

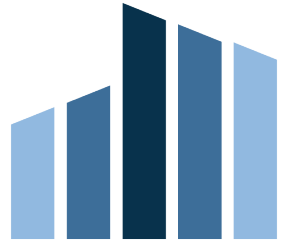
Tyler Martin
Sales Associate
706.854.6703

chris.senn@southeastern.company tyler.martin@southeastern.company

LAND FOR SALE

AIRPORT LAND

2368 GENERAL PERRY SMITH PKWY, AUGUSTA, GA 30906



SALE PRICE

\$1,312,750

LOCATION INFORMATION

Building Name	Airport Land
Street Address	2368 General Perry Smith Pkwy
City, State, Zip	Augusta, GA 30906
County/Township	Richmond

PROPERTY DETAILS

Property Type	Land
Property Subtype	Industrial
Lot Size	52.51 Acres
APN#	172-0-001-00-0



SOUTHEASTERN

DEVELOPMENT • BROKERAGE • CONSULTING

Presented By:

Chris Senn
Vice President
706.854.6728

Tyler Martin
Sales Associate
706.854.6703

chris.senn@southeastern.company tyler.martin@southeastern.company