

ODYSSEY MEDICAL CENTER SUBLEASE

22 Odyssey, 1st Floor, Irvine, CA 92618



Available: Approx. 1,500 RSF
Rental Rate: \$3.95/RSF/Month, MG
Term: Through May 12, 2024

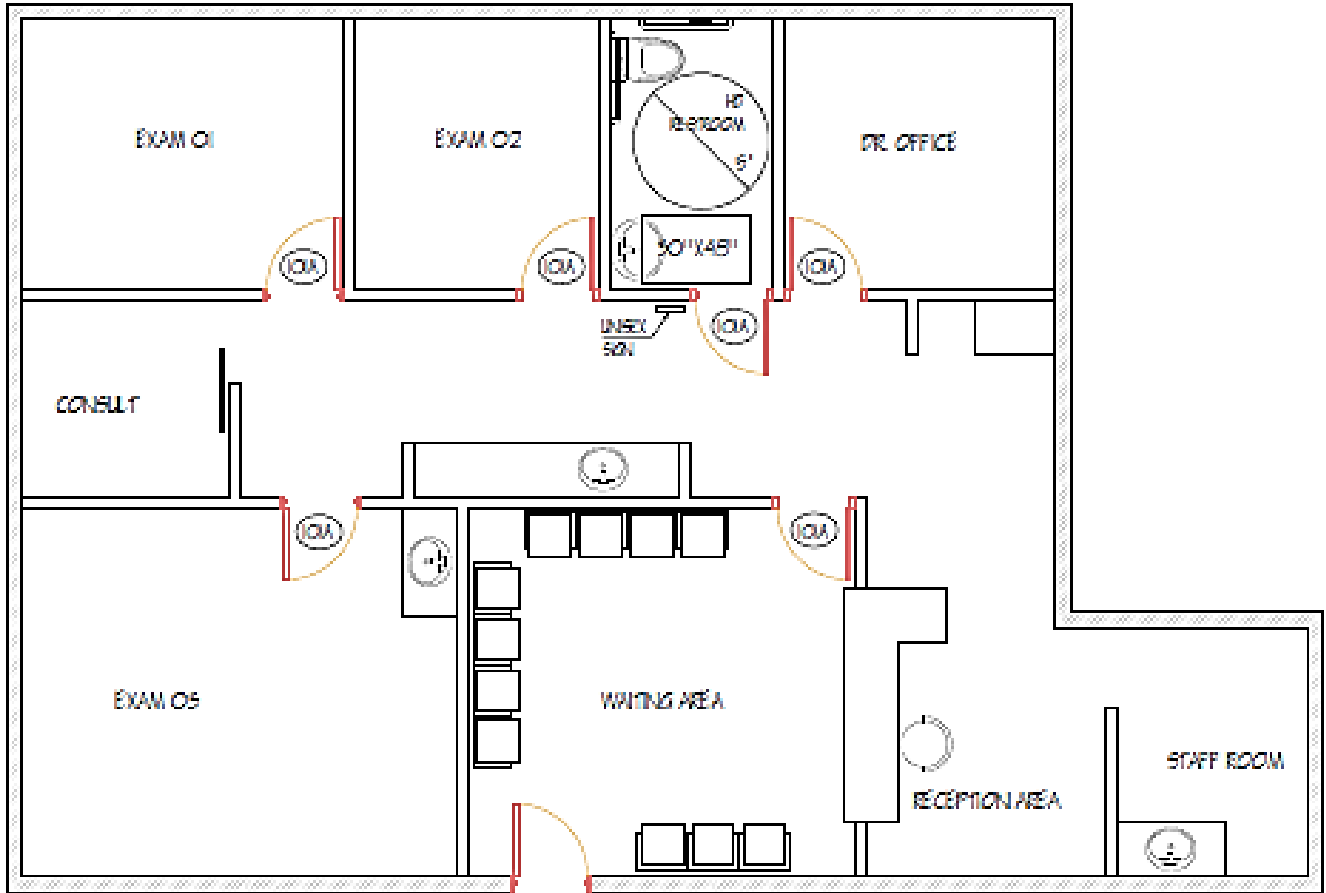
- Features:**
- Two (2) Small Procedure Rooms
 - One (1) Large Procedure Room
 - Beautiful Hardwood Floor
 - Reception Area
 - Private Bathroom
 - Kitchen/Lounge Area
 - Easy Access to 5, 405, 133 Freeways



FOR MORE INFORMATION CONTACT: Jeff Lipson, BRE #01196852 jlipson@stone-miller.com
Phone: (310) 202-9008 x113

ODYSSEY MEDICAL CENTER SUBLEASE

22 Odyssey, 1st Floor, Irvine, CA 92618



FOR MORE INFORMATION CONTACT: Jeff Lipson, BRE #01196852 jlipson@stone-miller.com
Phone: (310) 202-9008 x113