

OFFICE BUILDING FOR LEASE

# 639 Executive Place

Fayetteville, NC 28305



*for more information*

SUSAN EVANS

Broker

O: 910.829.1617 x208

C: 919.920.2140

susan@grantmurrayre.com



**Grant - Murray**  
REAL ESTATE, LLC

COMMERCIAL AND INVESTMENT BROKERAGE

150 N. McPherson Church Rd | Fayetteville, NC 28303 | [www.grantmurrayre.com](http://www.grantmurrayre.com)



## PROPERTY OVERVIEW

<b>Available SF:</b>	2,500 SF
<b>Lease Rate:</b>	\$4,500.00 per month (Full Service)
<b>Year Built:</b>	2006
<b>Building Size:</b>	4,006 SF
<b>Zoning:</b>	LC
<b>Market:</b>	Fayetteville

### property description

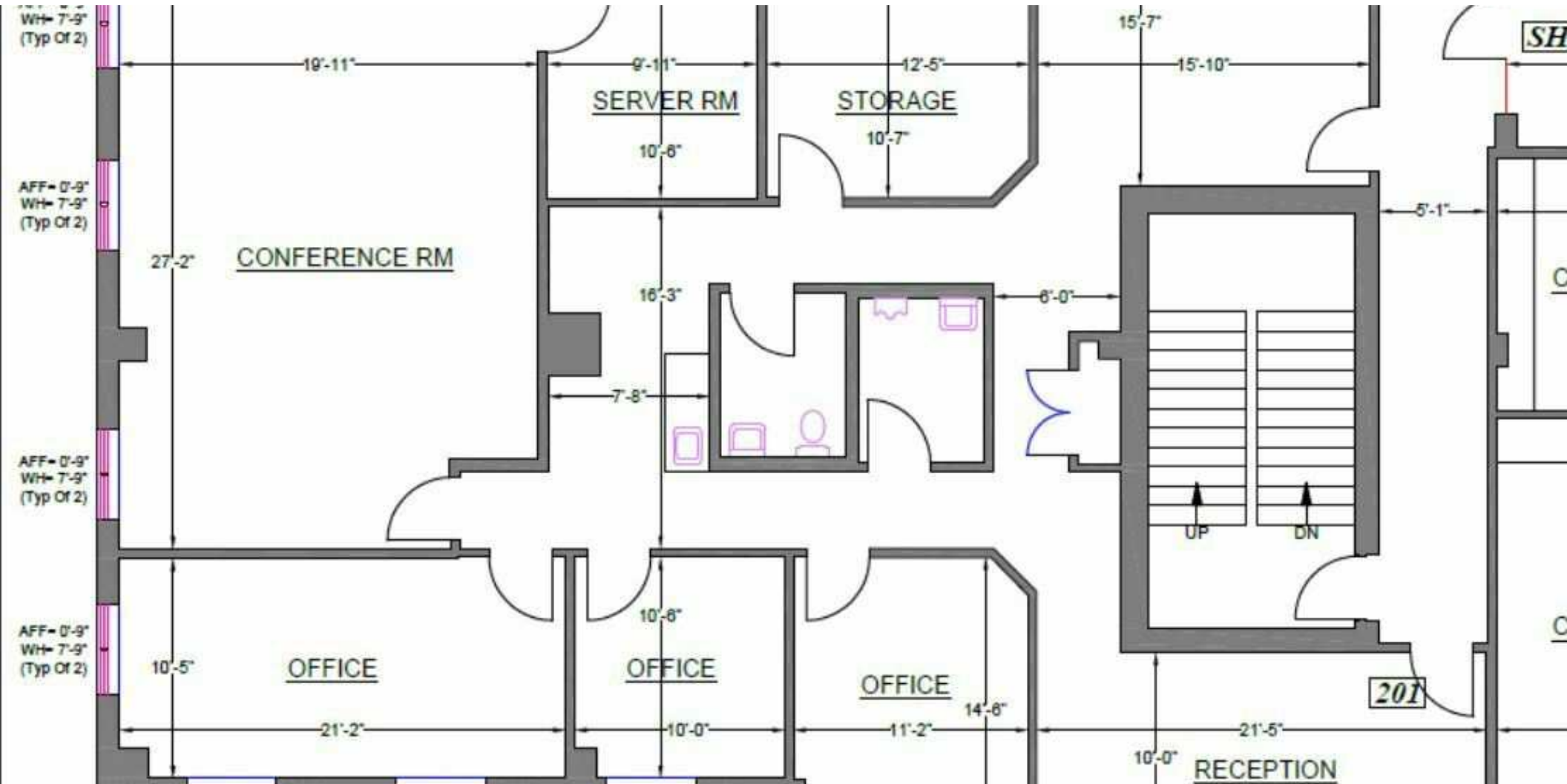
Discover a modern, Class A office space of 2,500 square feet that has a reception area, 4 offices, an extra large conference room, 2 handicapped accessible restrooms, and an elevator. This professional office building is located just off Raeford Road in a thriving office community beside Harris Teeter, State Employees Credit Union, and many other professional office users. Adequate parking. Centrally located within minutes of Fort Liberty and Downtown Fayetteville.

Perfect for flexible work arrangements, this fully equipped property is a full-service lease priced at \$4,500 per month. The rate includes utilities, trash, HOA fees, and NNN fees. Located in Executive Place, the property offers convenience, proximity to amenities, and adequate parking. For more details, contact Susan Evans at 919-920-2140.

#### Property Overview:

**Discover a modern office space of 2,573 square feet with an open layout and a spacious breakroom. The open layout can be modified if needed. Perfect for flexible work arrangements, this fully**

ADDITIONAL PHOTOS



for more information

SUSAN EVANS

Broker

O: 910.829.1617 x208

C: 919.920.2140

susan@grantmurrayre.com



Grant - Murray  
REAL ESTATE, LLC

COMMERCIAL AND INVESTMENT BROKERAGE

639 Executive Place  
FAYETTEVILLE, NC 28305

ADDITIONAL PHOTOS



*for more information*

SUSAN EVANS

Broker

O: 910.829.1617 x208

C: 919.920.2140

susan@grantmurrayre.com



Grant - Murray  
REAL ESTATE, LLC  
COMMERCIAL AND INVESTMENT BROKERAGE

150 N. McPherson Church Rd | Fayetteville, NC 28303 | [www.grantmurrayre.com](http://www.grantmurrayre.com)

639 Executive Place  
**FAYETTEVILLE, NC 28305**

DEMOGRAPHICS MAP & REPORT

POPULATION	1 MILE	5 MILES	10 MILES
Total Population	6,986	136,734	308,355
Average Age	40.7	34.7	33.5
Average Age (Male)	37.5	32.5	31.6
Average Age (Female)	43.1	36.5	35.1

HOUSEHOLDS & INCOME	1 MILE	5 MILES	10 MILES
Total Households	3,521	67,942	135,417
# of Persons per HH	2.0	2.0	2.3
Average HH Income	\$68,993	\$47,475	\$54,275
Average House Value	\$241,146	\$127,190	\$136,124

2020 American Community Survey (ACS)



for more information

SUSAN EVANS

Broker

O: 910.829.1617 x208

C: 919.920.2140

susan@grantmurrayre.com



**Grant - Murray**  
 REAL ESTATE, LLC

COMMERCIAL AND INVESTMENT BROKERAGE

# APPLY NOW!

639 Executive Place, Fayetteville, NC 28305

---

## Susan Evans



(919) 920-2140



susan@grantmurrayre.com

### You will submit:

Rental Application

TransUnion Screening 

- Credit Report & Score
- Criminal Background Check
- Eviction Related Proceedings



Scan to apply  
or visit:

<https://apply.link/4e13ETB>



rentspree

### Screening with RentSpree is a no-brainer

1. No damage to credit score (Soft credit inquiry)
2. Screening reports are instantly pulled and shared
3. Sensitive personal information is protected
4. The application is saved making it easier to re-apply

If you have any questions or issues, contact [support@rentspree.com](mailto:support@rentspree.com).