

# GREENVILLE'S MOST INNOVATIVE BUSINESS DESTINATION



100 - 750 EXECUTIVE CENTER DRIVE  
GREENVILLE, SC 29615

[View online](#)

**CBRE**

## AMENITIES



Large state-of-the-art fitness center



Showers and locker rooms



Full catering kitchen and café open for breakfast, lunch and special events



Oversized eatery



Conference/private dining room



Tenant lounge



Conference center & training facility



Outdoor seating, games and greenspace



On-site management office



Free wi-fi in HUB



Executive office suites available



Click to watch the amenities HUB video



NEW SIGNAGE  
AND WAYFINDING



ALL NEW LANDSCAPING



ENHANCED EXTERIOR  
LIGHTING



TECHNOLOGY UPGRADES  
INCLUDING KEY CARD  
ACCESS SYSTEMS



DIGITAL LOBBY  
DIRECTORIES WITH  
FLAT-SCREENS



FULL SERVICE ON-SITE  
CAFE WITH ONLINE  
ORDERING AND  
DELIVERY



## AVAILABILITIES



**\$26.00 - \$28.00 / RSF**

**FULL SERVICE**

### Executive Office Suites

#### Located in Building 700

- Suite 301 | \$7,500/Mo
- Suite 302 | \$5,000/Mo
- Suite 303 | \$4,000/ Mo
- Suite 304 | \$5,700/Mo
- Suite 305 | \$5,800/Mo
- Suite 306 | \$6,600/Mo

**100**

#### FULLY LEASED

**150**

#### Up to ±4,575 RSF Available

- Suite 101 | ±4,575 RSF

**200**

#### Up to ±8,452 RSF Available

- Suite 101 | ±8,452 RSF

**250**

#### FULLY LEASED

**300**

#### Up to ±25,177 RSF Available

- Suite 101 | ± 4,347 RSF
- Suite 300 | ±11,069 RSF
- Suite 301 | ±9,761 RSF

**400**

#### Up to ±4,502 RSF Available

- Suite 102 | ±4,502 RSF

**650**

#### FULLY LEASED

**700**

#### Up to ±24,236 RSF Available

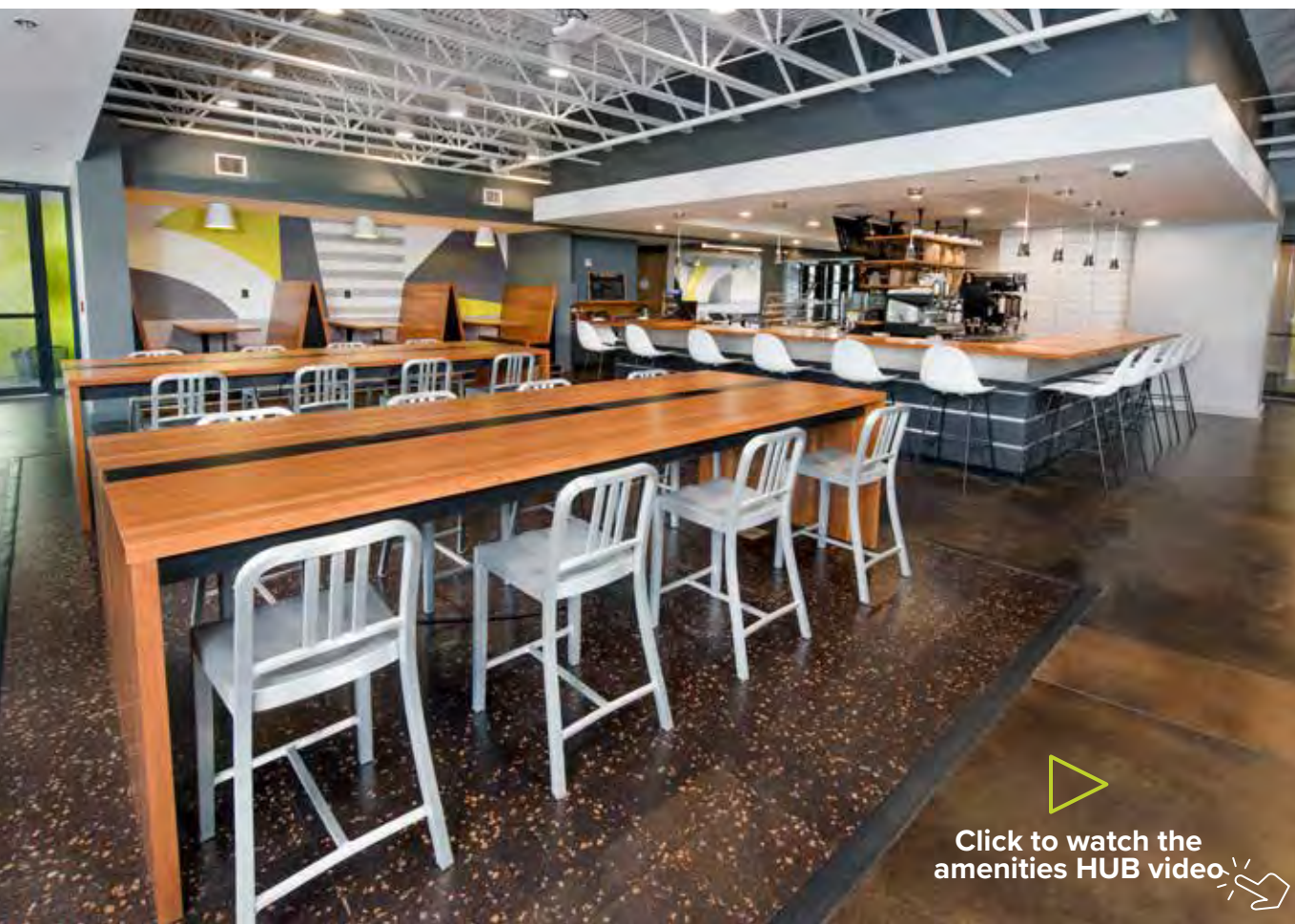
- Suite 125 | ±5,042 RSF
- Suite 201 | ±11,906 RSF
- Suite 220 | ±4,924 RSF
- Suite 222 | ±2,364 RSF

**750**

#### Up to ±3,829 RSF Available

- Suite 200 | ± 3,829 RSF





 Click to watch the amenities HUB video 



LOCATED IN BUILDING 700



## EXECUTIVE OFFICE SUITES



## Executive Office Suites

- Available November 2025
- Amenities Include:
  - Shared break room with coffee provided
  - Shared conference space
    - (1) 10 person conference room
    - (1) 8 person conference room
  - Online reservation system
  - Equipt with presentation
  - Private phone rooms
  - Private huddle room
  - Shared lounge area
  - Wi-fi available



Suite 301 | \$7,500/Mo

Suite 302 | \$5,000/Mo

Suite 303 | \$4,000/Mo

Suite 304 | \$5,700/Mo

Suite 305 | \$5,400/Mo

Suite 306 | \$6,600/Mo

*\*Pricing based on a 2 year lease*



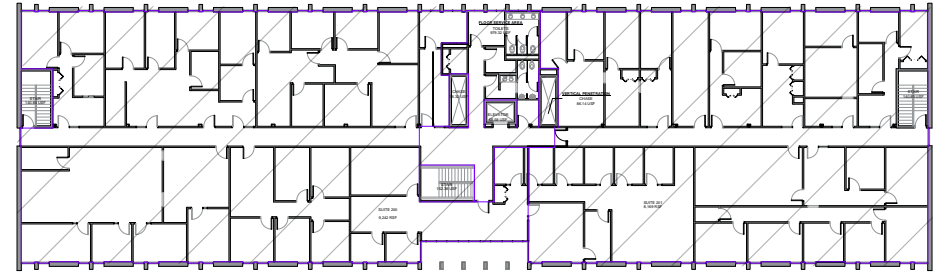
BUILDING  
**100**

### Property Features

- No Space Available

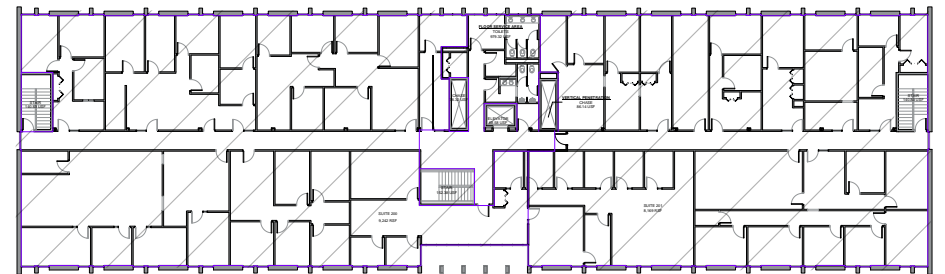
### FIRST FLOOR

FULLY LEASED



### SECOND FLOOR

FULLY LEASED



 Available







# BUILDING 150

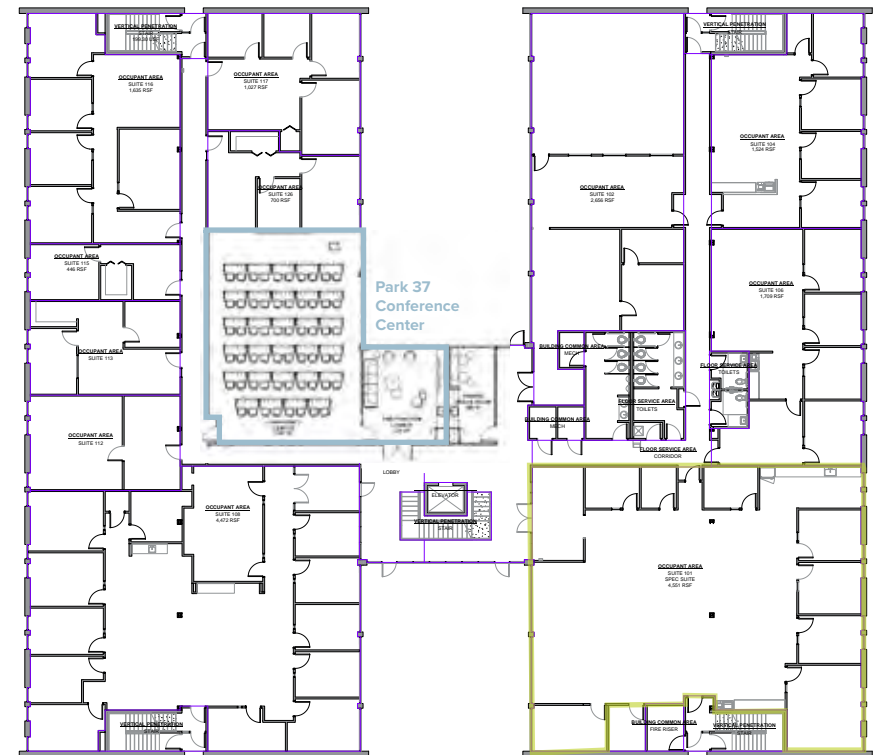


## Property Features

- ±4,875 RSF Available
- Furniture negotiable
- Park 37 shared conference & training located on the 1st floor

## FIRST FLOOR

±4,575 RSF



Suite 101 | ±4,575 RSF

200 EXECUTIVE CENTER DRIVE



WATCH  
VIRTUAL TOUR

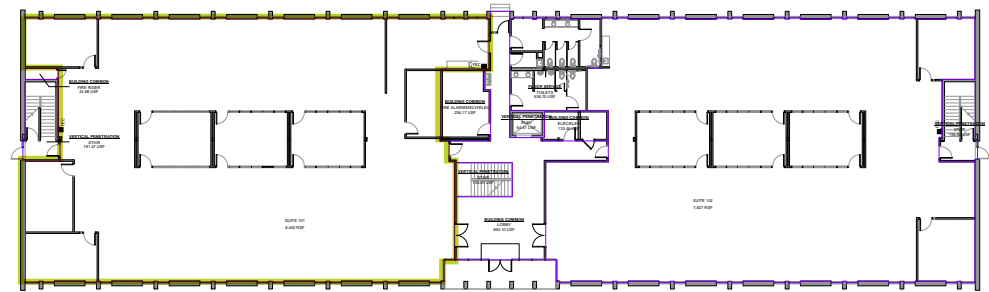
BUILDING  
**200**

## Property Features

- ±8,452 RSF Available
- Two floor building
- Building signage available

## FIRST FLOOR

±8,452 RSF



Suite 101 | ±8,452 RSF



 Available





## Property Features

- No Space Available

## FIRST FLOOR

### Amenities HUB



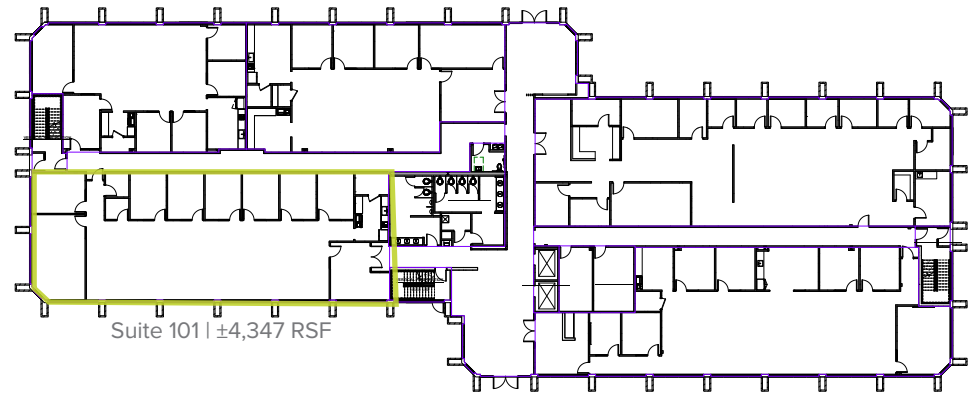


## Property Features

- Up to  $\pm 25,177$  RSF Available
  - Suite 101 |  $\pm 4,347$  RSF- Furniture negotiable
  - Suite 300 |  $\pm 11,069$  RSF
  - Suite 301 |  $\pm 9,761$  RSF
- Full floor opportunity
- Fully renovated

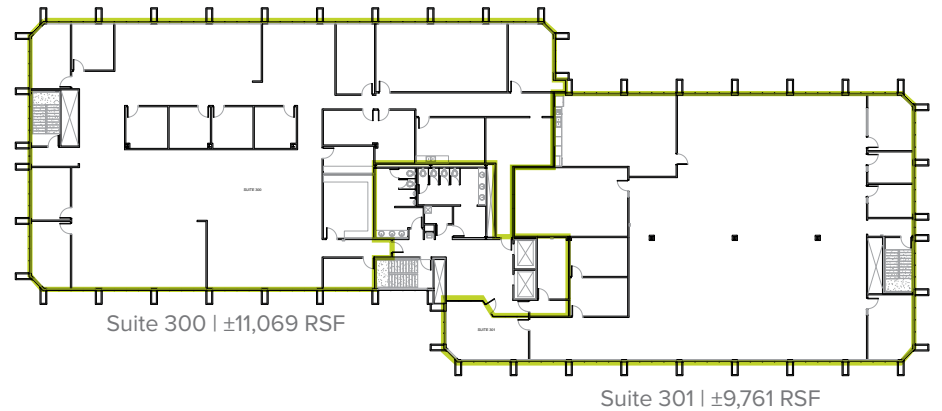
## FIRST FLOOR

$\pm 4,347$  RSF



## THIRD FLOOR

$\pm 20,826$  RSF







NEW LOBBY RENDERING

BUILDING  
**400**

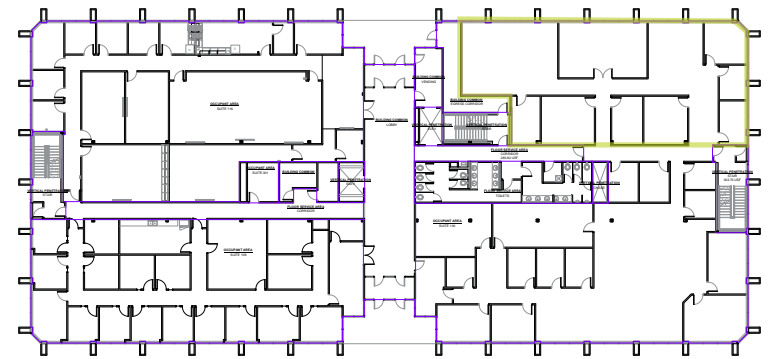
### Property Features

- Suite 102 |  $\pm 4,502$  RSF Available
- Full renovation underway

### FIRST FLOOR

$\pm 4,502$  RSF

Suite 102 |  $\pm 4,502$  RSF



EXTERIOR RENDERING



BUILDING  
**650**

**Property Features**

- No Space Available

**FIRST FLOOR**

FULLY LEASED



**SECOND FLOOR**

FULLY LEASED







NEW LOBBY

## Property Features

- Up to  $\pm 37,310$  RSF Available
  - Suite 102 |  $\pm 5,042$  RSF
  - Suite 201 |  $\pm 11,906$  RSF
  - Suite 220 |  $\pm 4,924$  RSF
  - Suite 222 |  $\pm 2,364$  RSF
- Full renovation completed
- Executive suites available on 3rd floor

## FIRST FLOOR

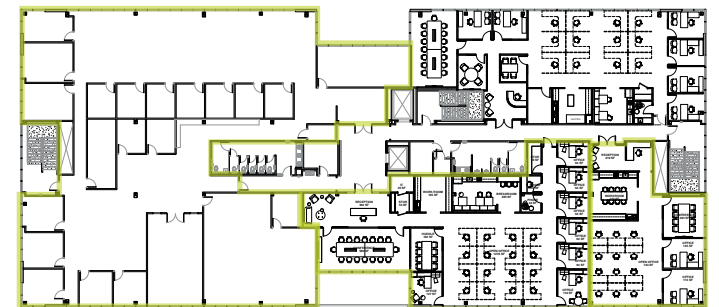
$\pm 5,042$  RSF

Suite 102 |  $\pm 5,042$  RSF



## SECOND FLOOR

$\pm 19,194$  RSF



Suite 201  
 $\pm 11,906$  RSF

Suite 220  
 $\pm 4,924$  RSF

Suite 222  
 $\pm 2,364$  RSF

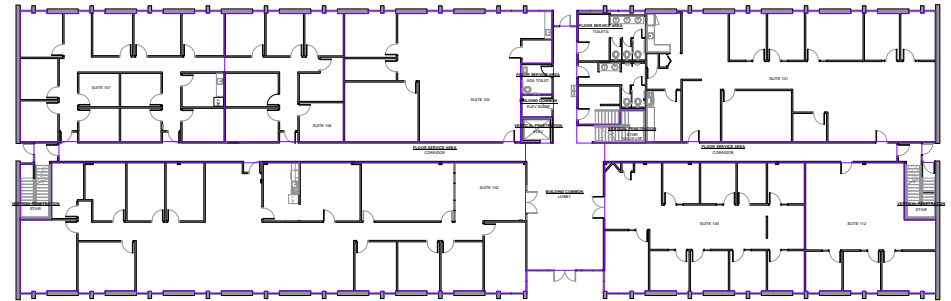


## Property Features

- Up to  $\pm 3,829$  RSF Available:  
Suite 200 |  $\pm 3,829$  RSF
- Two floor building
- Close proximity to large parking areas

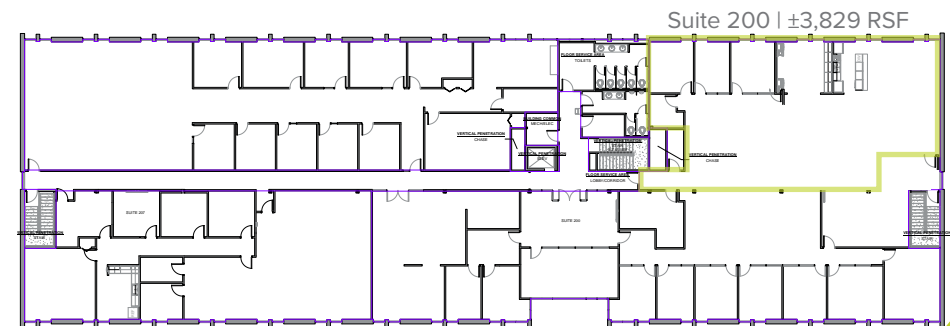
## FIRST FLOOR

Fully Leased



## SECOND FLOOR

$\pm 3,829$  RSF



 Available



## GREENVILLE LOCATION

Greenville is continuously recognized as one of the country's best places to do business and one of the top places to live.

The 37 speaks to the quality of the location and is the main interstate exit off I-385 and Roper Mountain Road.

Greenville is located in the Piedmont region of South Carolina at the footbills of the Blue Ridge Mountains. Conveniently located halfway between Atlanta and Charlotte, Greenville is situated along I-85, one of the busiest interstates in the nation. Continuously ranked for its favorable business climate, low cost of living, top education and unparalleled quality of life, Greenville has much to offer.

The location is adjacent to The Gateway (I-85 and I-385) Interchange and is across the interstate from Magnolia Park, with convenient access to Woodruff Road and the rapidly growing Verdae corridor. The Greenville CBD is roughly ten minutes but the park itself sits just outside of the City of Greenville classification.

The Park's location to the city's bustling Woodruff Road and growing Magnolia Park is truly a great choice for companies looking for convenient office space with state-of-the-art and high-tech tenant amenities.





**Charles Gouch, CCIM, SIOR**

Senior Vice President

+1 864 527 6035

charles.gouch@cbre.com

**Blaine Hart, SIOR**

Senior Vice President

+1 864 527 6054

blaine.hart@cbre.com

**Shelby Dodson, LEED AP**

Senior Vice President

+1 864 527 6022

shelby.dodson@cbre.com

[www.cbre.us/greenville](http://www.cbre.us/greenville)

© 2024 CBRE, Inc. All rights reserved. This information has been obtained from sources believed reliable, but has not been verified for accuracy or completeness. You should conduct a careful, independent investigation of the property and verify all information. Any reliance on this information is solely at your own risk. CBRE and the CBRE logo are service marks of CBRE, Inc. All other marks displayed on this document are the property of their respective owners. Photos herein are the property of their respective owners. Use of these images without the express written consent of the owner is prohibited. PMStudio\_March2019

**CBRE**