

# WORCP LACES

BY CP GROUP

40,000 SF of Flexible Office  
*Now Leasing* at GA-400 x I-285

LAKESIDE

5775 GLENRIDGE DRIVE, BUILDING C • SANDY SPRINGS, 30328



# WORCPACES AT LAKESIDE

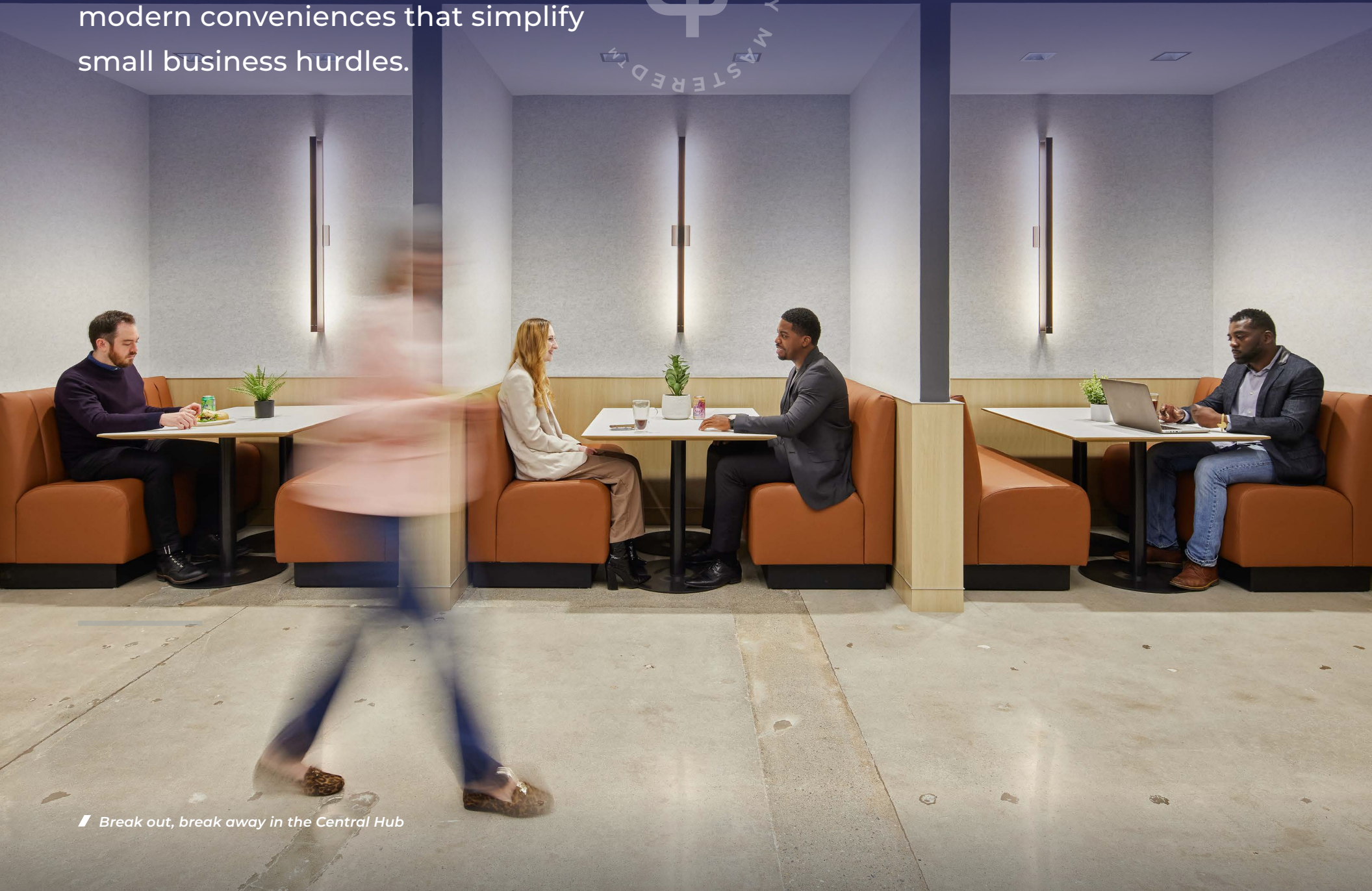
CP Group is proud to debut 40,000+ SF of market-leading Cowork Places, Flex Places and Spec Places at its flagship location at I-285 x GA-400 in Sandy Springs, Georgia.

Sized to meet the expectations of 21st-century professionals looking to move quickly and scale their company future in place.

Designed with an emphasis on health, wellness and flexibility, worCPlaces represents CP Group's pledged commitment to delivering exceptional office environments complemented by best-in-class amenities and stand-out service.



Anchored by an in-building amenity core, worCPlaces at Lakeside features modern conveniences that simplify small business hurdles.



Break out, break away in the Central Hub

# Discover The Benefits

## INCLUSIVE worCPlaces ADVANTAGES:

- ✓ Staffed by a Community Manager to handle day-to-day operations, allowing members to focus on head-down work and provide a first-class hospitality experience\*
- ✓ In-building digitally reservable meeting spaces
- ✓ Shared communal servery and open lounge for break-out space and team functions
- ✓ Secured contactless entry 365/24/7
- ✓ Free surface parking and first-come covered parking
- ✓ High-speed, secure WiFi throughout suites
- ✓ Wireless, secure printing





2-person Cowork Place

## AN INTRODUCTION TO

# Cowork Places

A scalable coworking office solution for small, growing teams, Cowork Places offers *open-plan seating* and/or single and *multi-desk private offices* with *shared common area amenities* such as conference rooms, phone booths, huddle rooms, reception area, copy room, and server room.

---

### DESIGNED FOR:

Ultimate flexibility for one to 20

---

### COMMITMENT:

Month-to-Month

---

### WHAT'S INCLUDED:

- ✓ Desks and ergonomic chairs
- ✓ Company branding on suite entry
- ✓ Complimentary coffee, water and snacks
- ✓ Community networking events
- ✓ 100 free pages printing per month
- ✓ 4 hrs. complimentary conference room time / month
- ✓ Nightly office cleaning



6-person Cowork Place

AN INTRODUCTION TO

# Cowork Places

DESIGNED FOR:

Ultimate flexibility for one to 20

COMMITMENT:

Month-to-Month



## AN INTRODUCTION TO

# Flex Places

The ideal office solution for *scaling small businesses and Enterprise teams*, Flex Places presents private, *flexible term space* that offers shared common area amenities such as huddle rooms, reception area, pantry/copy room, and a dedicated server room.

---

### DESIGNED FOR:

Short-term flexibility for scaling small businesses and Enterprise teams

---

### COMMITMENT:

1-3 Year Term

---

### WHAT'S INCLUDED:

- ✓ Fully wired
  - ✓ Company branding on suite entry
  - ✓ Dedicated storage/printer/pantry in each suite
  - ✓ Access to all shared common area amenities including pantry, meeting spaces, and lounge areas
  - ✓ Can be furnished upon request
  - ✓ Nightly office cleaning
- 



Multiple reservable meeting spaces



Flex Places designed for scale in place



AN INTRODUCTION TO

# Flex Places

**DESIGNED FOR:**

Short-term flexibility for scaling  
teams and Enterprise users

**COMMITMENT:**

1-3 Year Term





2,500 SF Spec Place



5,000 SF Spec Place

## AN INTRODUCTION TO

# Spec Places

Custom office solutions built to exacting specifications, Spec Places are CP Group's spin on traditional spec suites. Spec Places are also *available with a turnkey experience including furnishings and managed IT* upon request.

---

### DESIGNED FOR:

Ideal solution for small businesses, hybrid teams and Enterprise companies

---

### COMMITMENT:

2-5 Years

---

### WHAT'S INCLUDED:

- ✓ Fully wired
  - ✓ Company branding on suite entry
  - ✓ Hybrid meeting spaces/flex offices for growth in place
  - ✓ Dedicated break area and copy/stor. space in each suite
  - ✓ Can be furnished upon request
  - ✓ Nightly office cleaning
-

AN INTRODUCTION TO

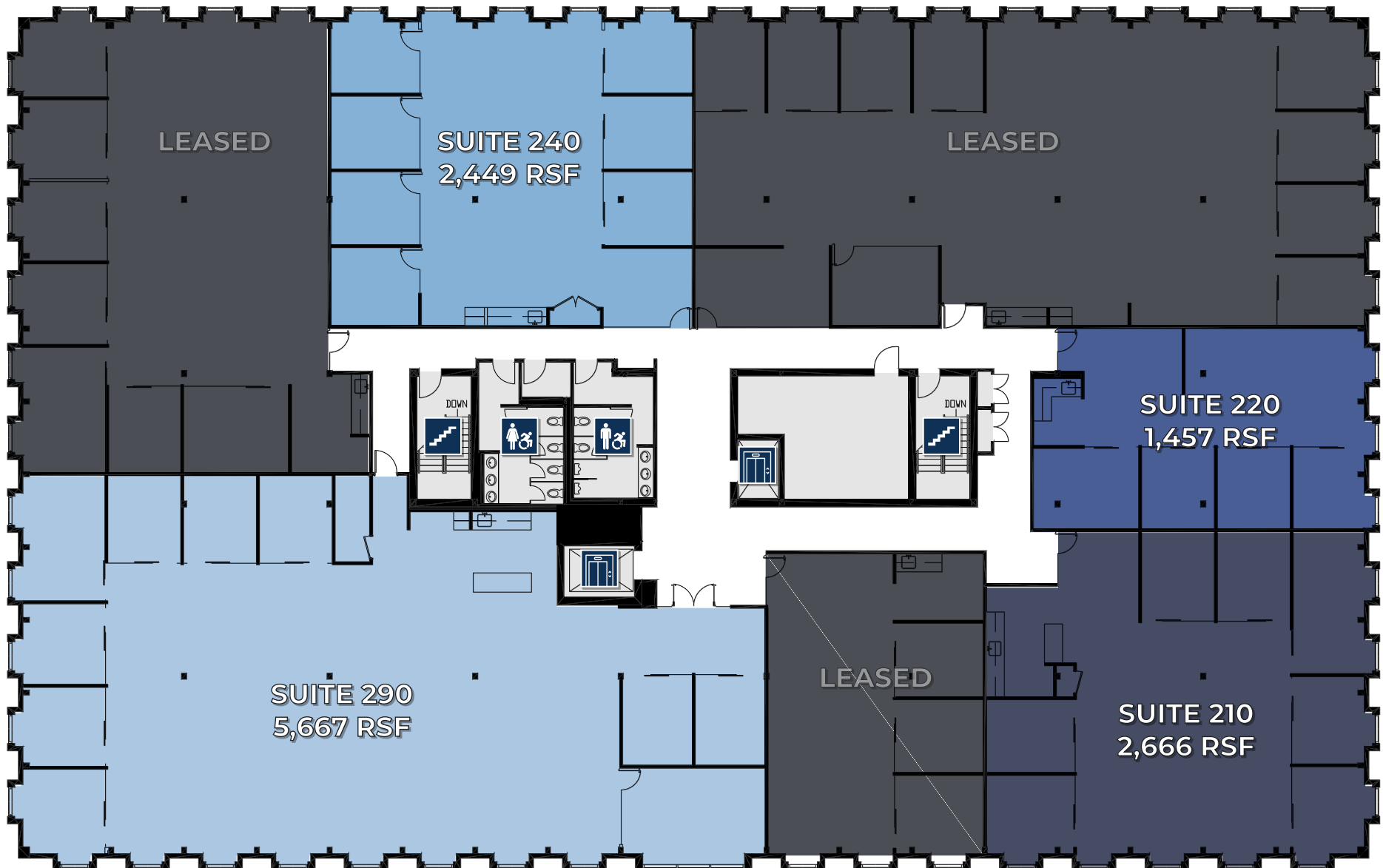
# Spec Places

**DESIGNED FOR:**

Ideal solution for small businesses,  
hybrid teams and Enterprise  
companies

**COMMITMENT:**

2-5 Year Term





worCPlaces AVAILABLE • FLEXIBILITY MASTERED™ • 40,000 SF OF PREMIUM FINISH

**WORCPACES**  
BY CP GROUP

---

**Learn More about worCPlaces:**

**ERIC ROSS**  
+1 404 923 1303  
eric.ross@cbre.com

**JESSICA DOYLE**  
+1 404 408 1264  
jessica.doyle@cbre.com

---

© 2024 CBRE, Inc. All rights reserved. This information has been obtained from sources believed reliable but has not been verified for accuracy or completeness. CBRE, Inc. makes no guarantee, representation or warranty and accepts no responsibility or liability as to the accuracy, completeness, or reliability of the information contained herein. You should conduct a careful, independent investigation of the property and verify all information. Any reliance on this information is solely at your own risk.

**CBRE**

CBRE, Inc.  
+1 404 504 7900  
cbre.com/atlanta