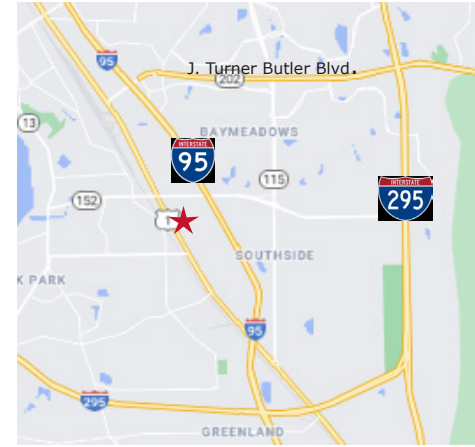


**OFFICE SPACE
FOR LEASE**

7563 Philips Hwy, Bldg 300, Jacksonville, FL 32256



- **Suite: #304: +/-1,150 RSF**
- **Lease Rate: : \$19.50/RSF Modified Gross**
-plus electric and janitorial
- Available immediately
- Zoning: PUD (Office/Professional/Medical)
- Highly efficient office layout featuring tray ceilings. Floor plan includes four offices, large reception, break area, ADA accessible restroom, and ample storage
- Parking available on a shared basis in surrounding surface lot
- Located in the aptly titled Treetops Office Center, this project boasts a serene backdrop with trees spread across the property. Situated just off Philips Highway near JT Butler Blvd, it is the perfect combination of setting and location.



2025 Demographics	1 Mile	3 Mile	5 Mile
Estimated Population	6,847	86,100	193,121
Average HH Income	\$98,818	\$103,994	\$105,959
Daytime Total Employees	13,183	78,468	157,461

For Additional
Information Contact:

JC Clifford
jcc@strategicsites.com

OR **Kate Clifford**
kate@strategicsites.com



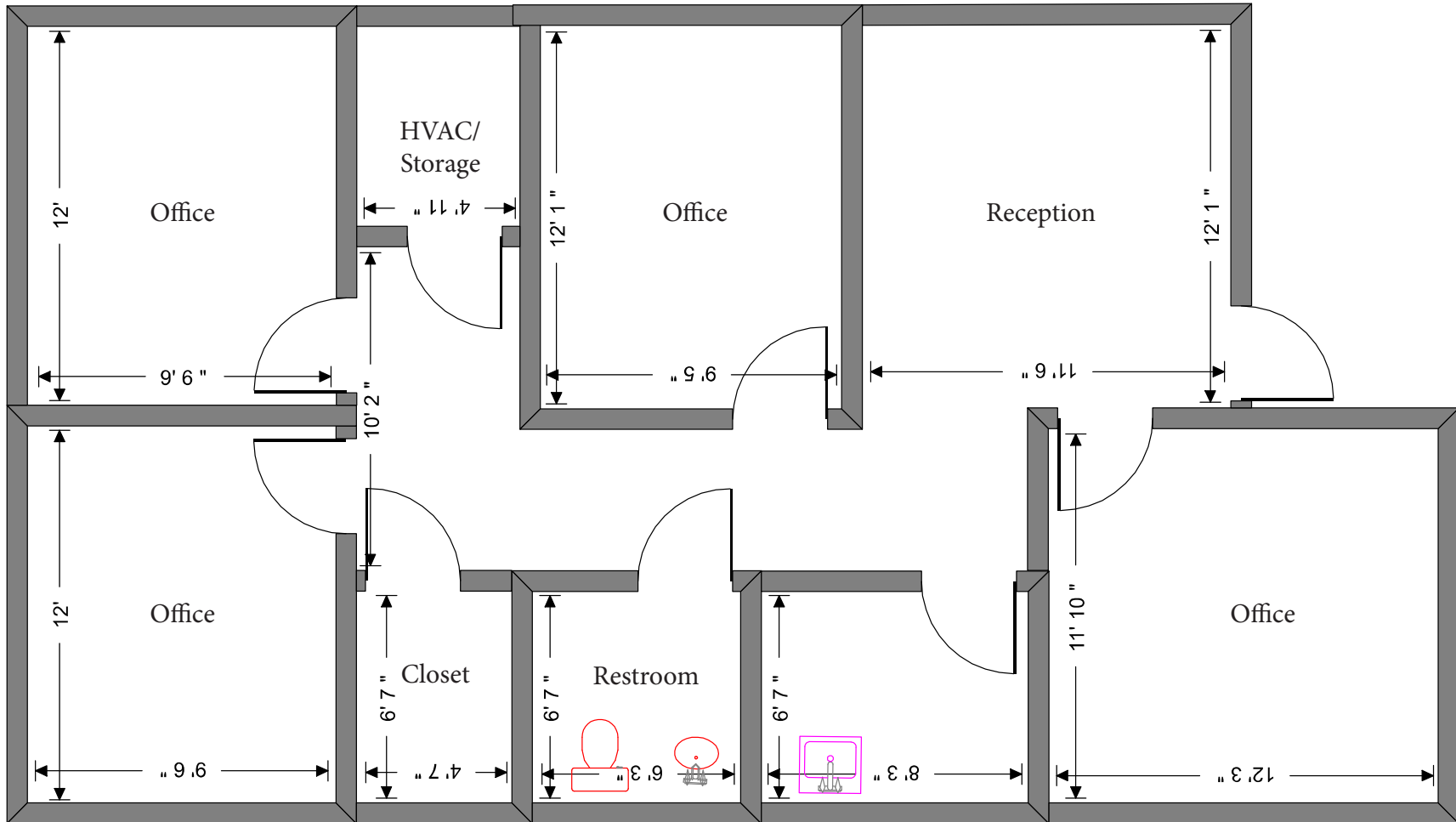
422 Jacksonville Drive, Jacksonville Beach, FL ~ 904-242-2828 ~ www.strategicsites.com

Client First through Service, Knowledge and Integrity

Notice of Disclaimer: Details contained herein are believed to be correct: the information is subject to errors, omissions, price changes, or withdrawal without notice

Floor Plan

Suite #304: +/-1,150 RSF

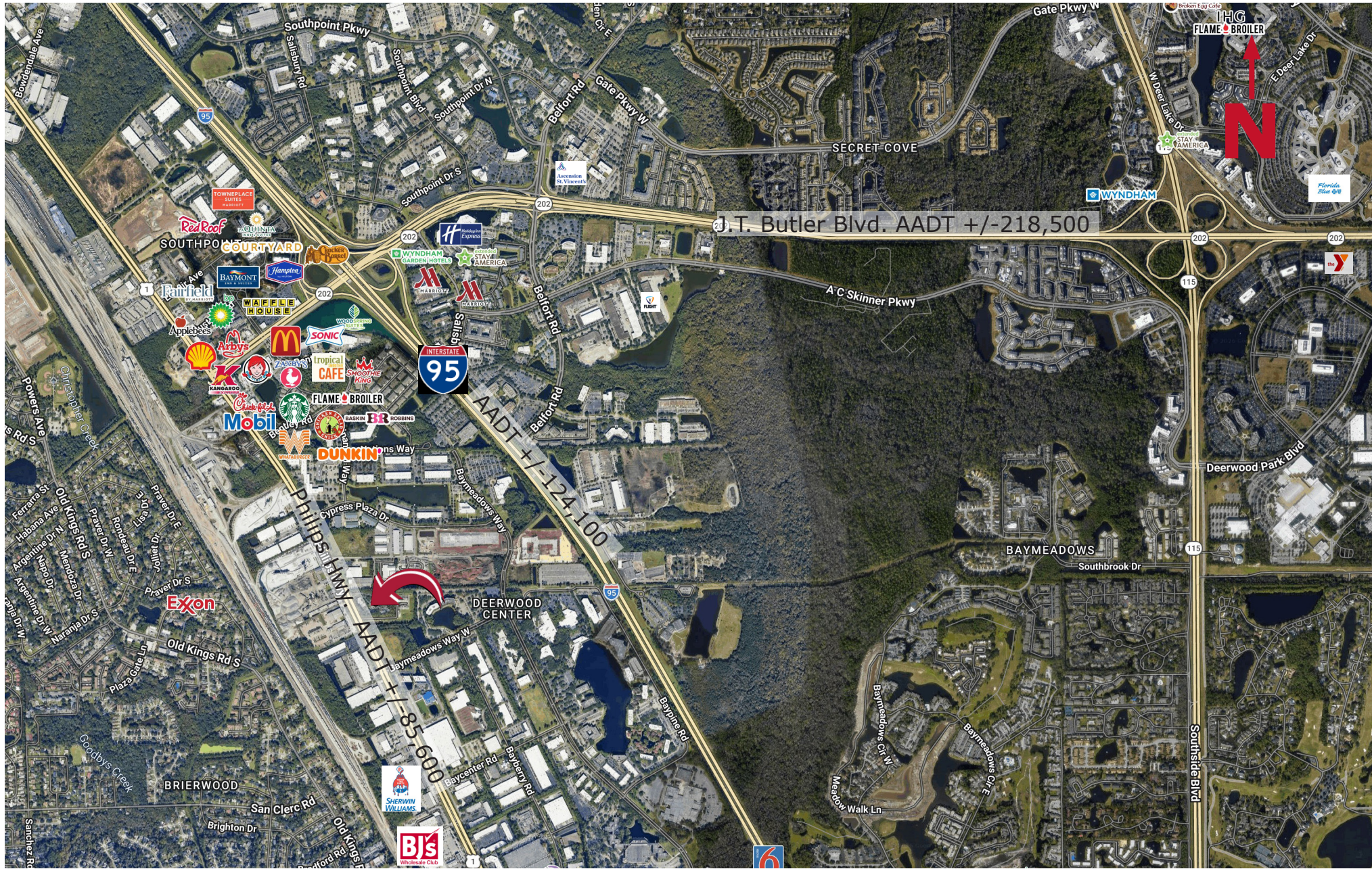


422 Jacksonville Drive, Jacksonville Beach, FL ~ 904-242-2828 ~ www.strategicsites.com

Client First through Service, Knowledge and Integrity

Notice of Disclaimer: Details contained herein are believed to be correct: the information is subject to errors, omissions, price changes, or withdrawal without notice

Aerial



422 Jacksonville Drive, Jacksonville Beach, FL ~ 904-242-2828 ~ www.strategicsites.com

Client First through Service, Knowledge and Integrity

Notice of Disclaimer: Details contained herein are believed to be correct: the information is subject to errors, omissions, price changes, or withdrawal without notice