



GARDEN CITY WAREHOUSE SPACE

502 E 43RD STREET, GARDEN CITY, ID



PROPERTY INFORMATION

PROPERTY TYPE:	Industrial
ADDRESS:	502 E 43rd St, Suite B, Garden City, ID 83714
AVAILABLE SPACE:	1,600 SF
ZONING:	C-2 - Garden City
LEASE RATE:	\$1,360/month NNN
LEASE TERM:	3 - 5 Years

HIGHLIGHTS

- Affordable warehouse space
- Space features roll-up door, small office, restroom
- Centrally-located in Garden City; Less than 10 minutes from Interstate 84

This information was obtained from sources believed reliable but cannot be guaranteed and is subject to change at any time. Any opinions or estimates are used for example only.

BEN FULCHER

P: 208.229.2020 | C: 208.859.7407 | bfulcher@naiselect.com

NAI SELECT | RALLENS REALTY CONSULTANTS | 5571 N. GLENWOOD ST., BOISE, ID 83714 | 208.229.2020

NAISelect

RALLENS REALTY
CONSULTANTS



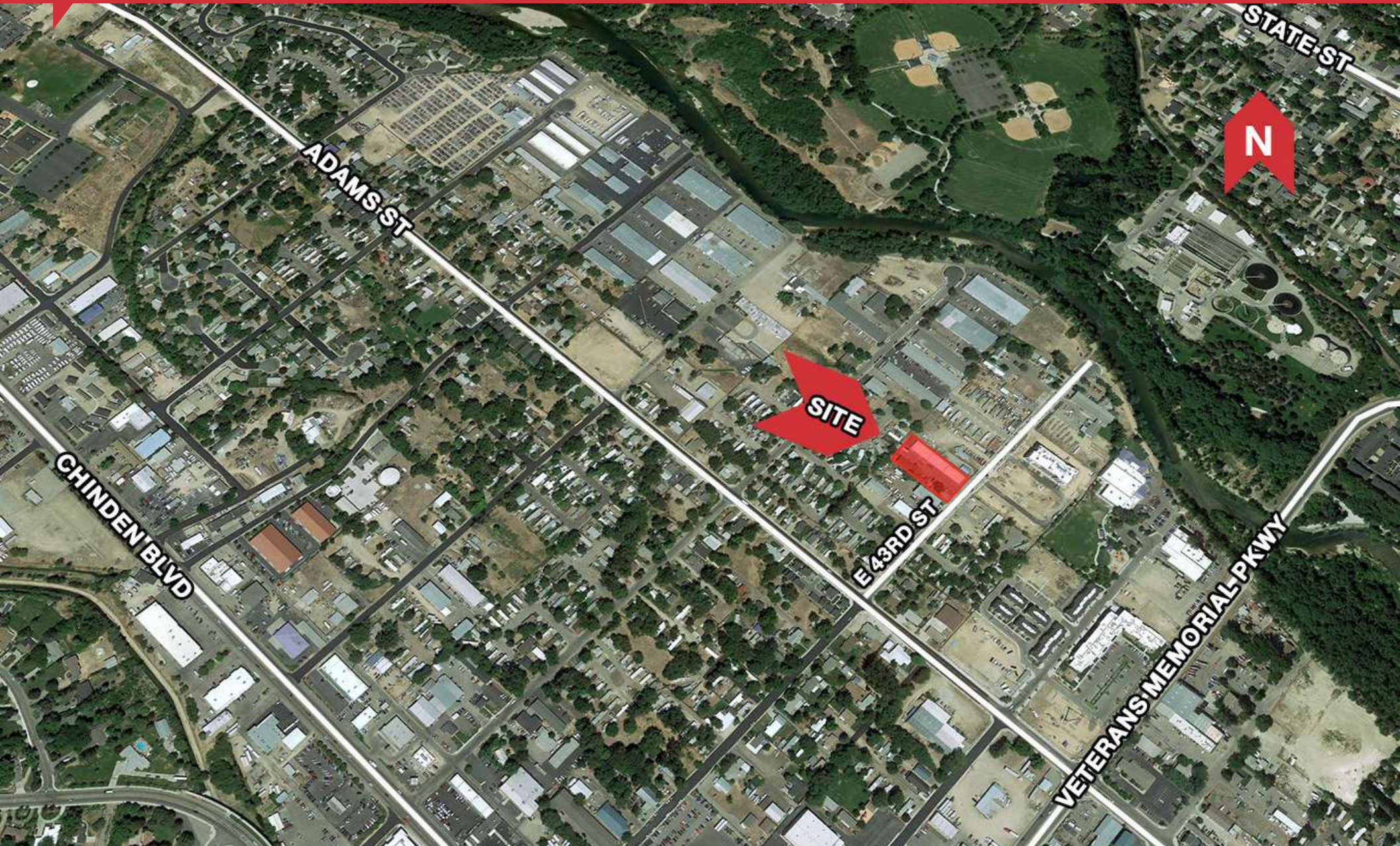
BEN FULCHER

P: 208.229.2020 | C: 208.859.7407 | bfulcher@naiselect.com

NAI SELECT | RALLENS REALTY CONSULTANTS | 5571 N. GLENWOOD ST., BOISE, ID 83714 | 208.229.2020

NAISelect

RALLENS REALTY
CONSULTANTS

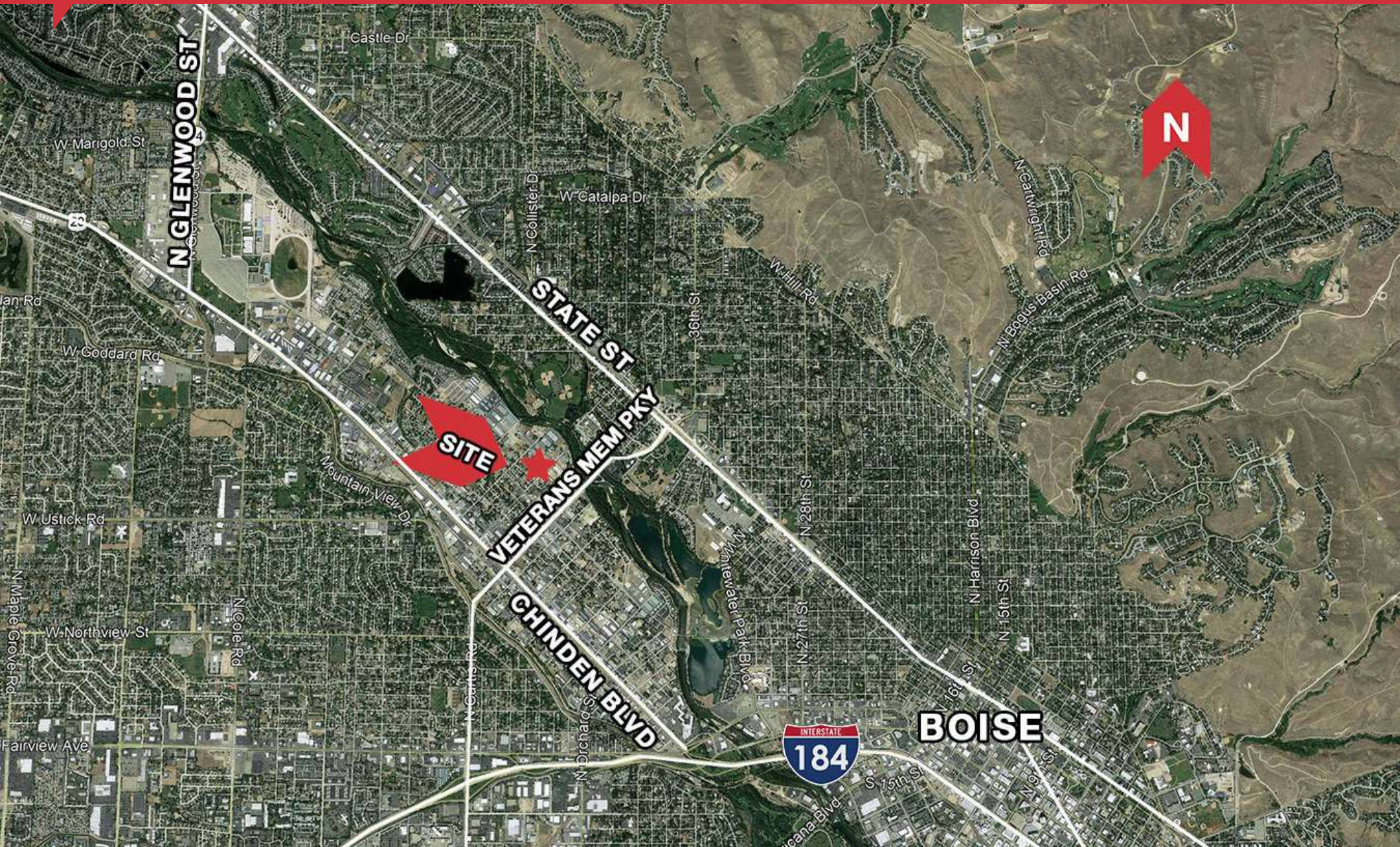


BEN FULCHER

P: 208.229.2020 | C: 208.859.7407 | bfulcher@naiselect.com

NAI SELECT | RALLENS REALTY CONSULTANTS | 5571 N. GLENWOOD ST., BOISE, ID 83714 | 208.229.2020





BEN FULCHER

P: 208.229.2020 | C: 208.859.7407 | bfulcher@naiselect.com

NAI SELECT | RALLENS REALTY CONSULTANTS | 5571 N. GLENWOOD ST., BOISE, ID 83714 | 208.229.2020

