



LAURINBERG ROAD

LAURINBURG ROAD, RAEFORD, NC 28376

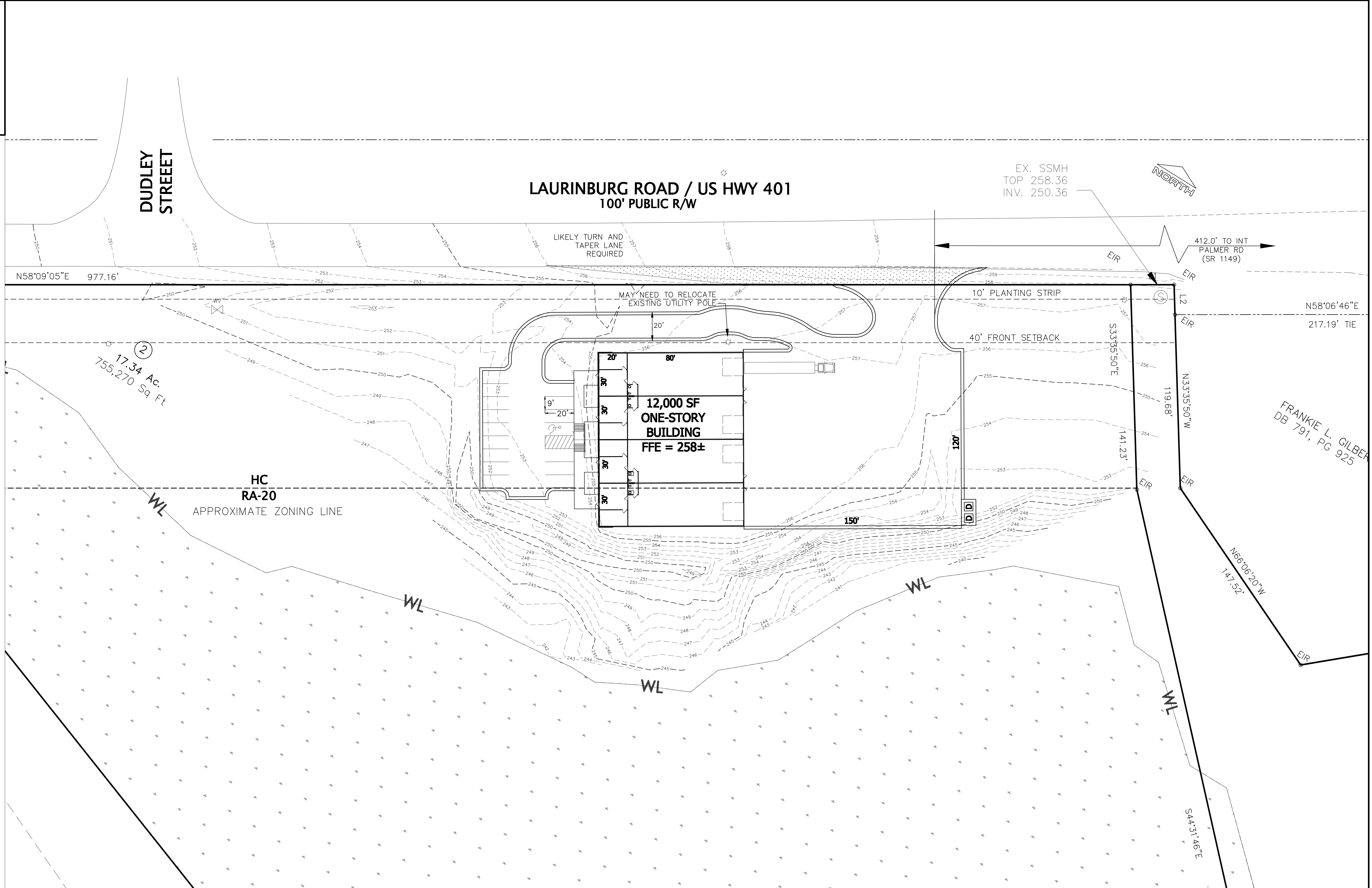
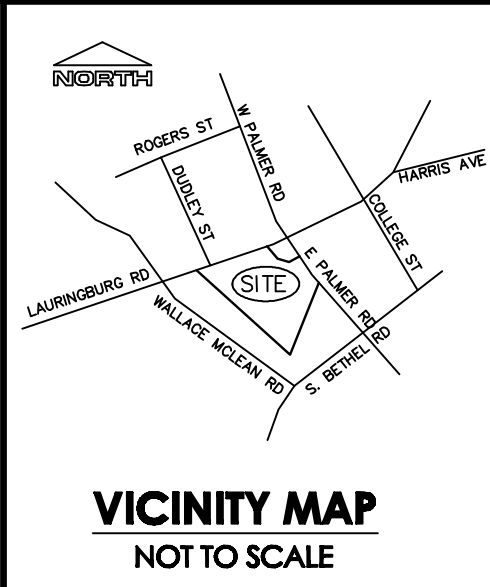
Acreage: 17.34

Zoning: HC - Highway Commercial & RA-20• Frontage: 1,000+ Ft on Laurinburg Road

Legal Description: Hoke County Deed Book 1243, Page 1034

Parcel ID: 694241501031

Description: 17 acres with 3.9 acres of uplands fronting Hwy 401. RA 20 or can be zoned for commercial or retail. Wetlands can be used for parking.

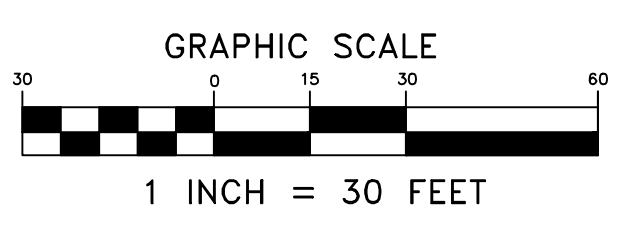


FRANKIE L. GILBERT
DB 791, PG 925

- ABBREVIATIONS**
- AC = ACRES
 - AG = ABOVE GROUND
 - BG = BELOW GROUND
 - EIP = EXISTING IRON PIPE
 - EIR = EXISTING IRON REBAR
 - FES = FLARED END SECTION
 - FWG = FLUSH WITH GROUND
 - INV = INVERT
 - N/F = NOW OR FORMERLY
 - RCP = REINFORCED CONCRETE PIPE
 - W/ = WITH

LEGEND

EXISTING	PROPOSED	DESCRIPTION
☐	☐	CATCH BASIN
☐	☐	CONCRETE MONUMENT
☐	☐	CONTOUR
☐	☐	DROP INLET
☐	☐	FIRE HYDRANT
☐	☐	GATE VALVE
☐	☐	IRON PIPE OR REBAR
☐	☐	SAWTOOTH BENDER LINE
☐	☐	STORM DRAIN PIPE
☐	☐	UTILITY POLE
☐	☐	WATER BLOW OFF
☐	☐	WATER LINE
☐	☐	WATER METER
☐	☐	WATER REDUCER
☐	☐	WATER TIE
☐	☐	WATER VALVE
☐	☐	WELDBOX
☐	☐	ELECTRIC PEDISTAL
☐	☐	UNDERGROUND ELECTRIC
☐	☐	UNDERGROUND GAS
☐	☐	TELEPHONE PEDISTAL
☐	☐	UNDERGROUND FIBER OPTIC



PRELIMINARY
DO NOT USE FOR
CONSTRUCTION

REVISIONS

NO.	DATE	DESCRIPTION

SKETCH PLAN
RAEFORD
COMMERCIAL SITE

TOWNSHIP: **RAEFORD** COUNTY: **HOKE**

STATE: **NORTH CAROLINA**

PROPERTY OF: **H&H INVESTMENTS, INC., D RALPH HUFF III**

ENGINEERING - SURVEYING - DESIGNING - DRAFTING
Larry King & Associates, R.L.S., P.A.

P.O. Box 53787
1333 Morganton Road, Suite 201
Fayetteville, North Carolina 28305
P. (910) 483-4300 F. (910) 483-4052
www.LKandA.com

NC Firm License C-0887

DATE: **7/13/2022** SURVEYED BY: **N/A** FIELD BOOK: **N/A**

SCALE: **AS NOTED** DRAWN BY: **LANCE** FILE REF: **PVP09-051**

CHECKED & CLOSURE BY: **N/A** DRAWING NO. **1 of 1**

P:\P22-040 RAEFORD FLEX SPACE\CAD\DWG\PL22-040\DWG\BASE SITE 7.dwg, 12/12/2022 1:00:05 PM, Layer: 11

