

FOR LEASE

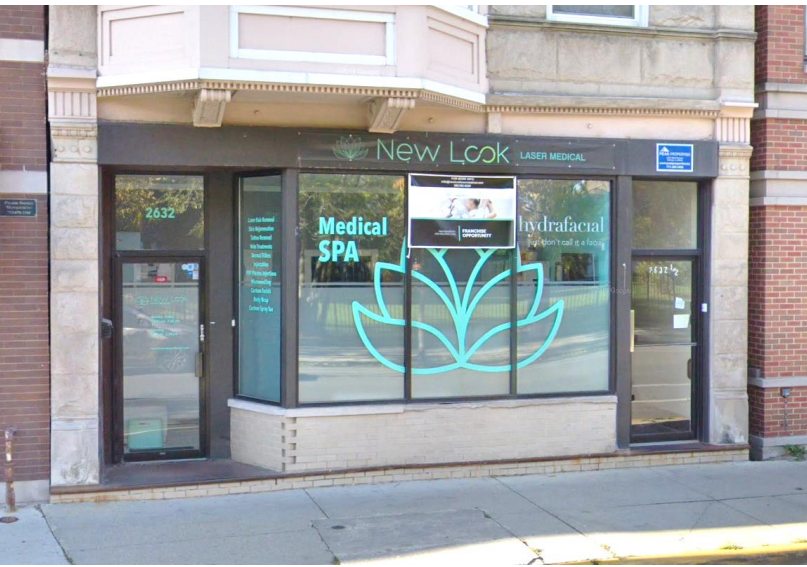
1,500 SF BUILT-OUT MEDSPA SPACE

- 1,500 sf Fully built-out med spa with 4-5 treatment rooms, reception/waiting area, restroom with shower, plus bonus lower-level space.
- This property is ideally located on Lincoln Avenue in Chicago's Lincoln Park neighborhood
- Great visibility, traffic and ease of parking
- Strong Lincoln Park demographics

**2632 N. Lincoln Ave.
Chicago, Illinois**



2632 N. Lincoln, Chicago, Illinois



JOE PADORR

312.316.2300

jpadorr@seneca-re.com

SENECA
REAL ESTATE GROUP

