

# FOR LEASE

599 ELEVENTH AVENUE



## Building Specifications

Typical Floor Plate: 8,654 SF  
 Ceiling Heights: 12' (FL 1), 10' (FL 2-7), 11'6" (FL 8)  
 Elevator Capacity: 1 Passenger, 1 Manual Freight

599 Eleventh Avenue	Floor
8,654 SF	8
8,654 SF	6
8,654 SF	3
<b>25,962 SF</b>	<b>TOTAL</b>



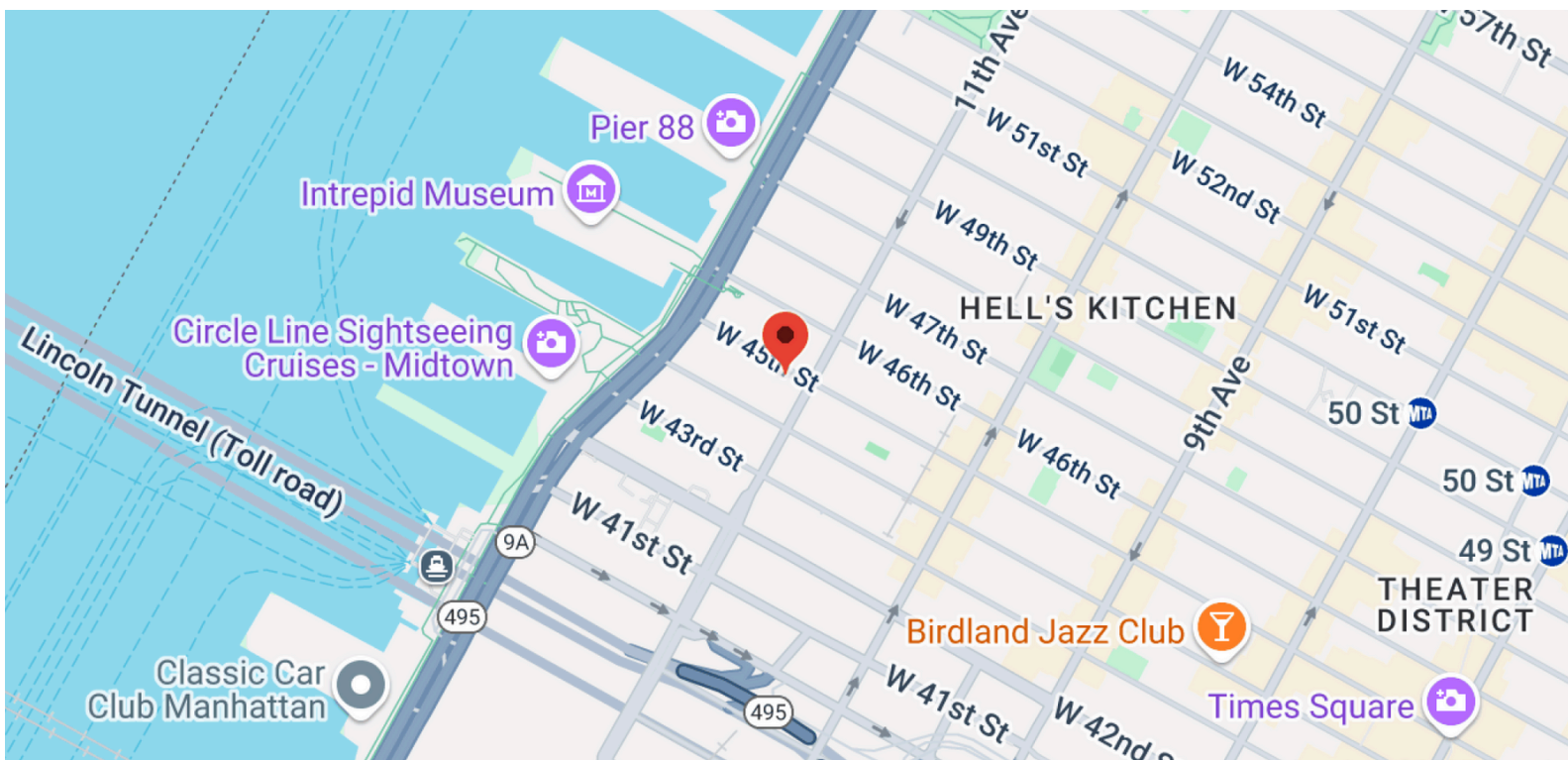
## TRANSPORTATION

### TRANSIT/SUBWAY

34 St-Hudson Yards	12 min walk	0.8 mi
42 Street-Port Authority Bus Terminal	12 min walk	1.0 mi
50 Street (A,C,E Line)	15 min walk	0.8 mi
49 St	16 min walk	1.3 mi
50 Street (1,2 Line)	17 min walk	1.1 mi

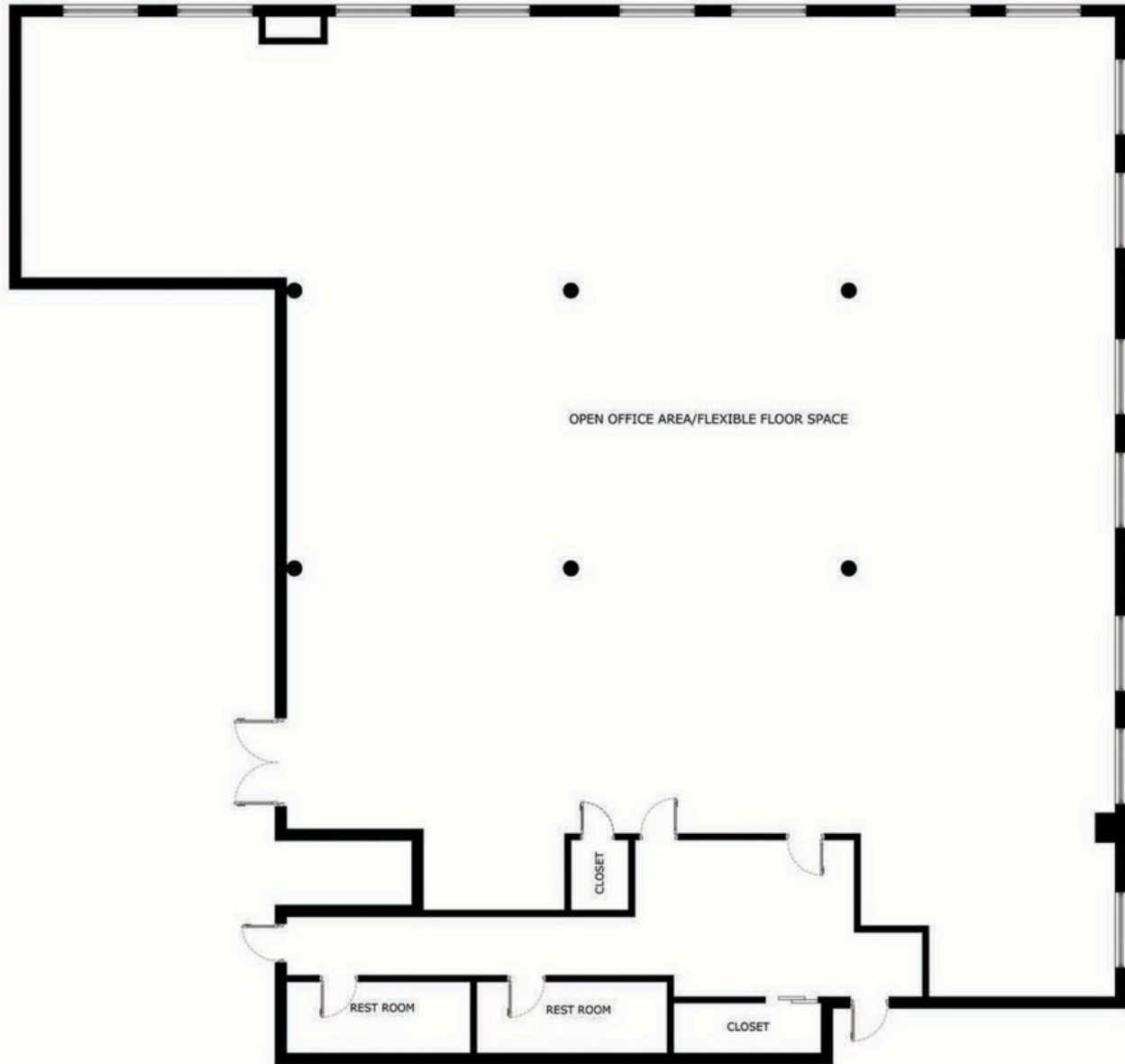
### COMMUTER RAIL

34 St-Hudson Yards	4 min drive	1.7 mi
42 Street-Port Authority Bus Terminal	4 min drive	1.5 mi
50 Street (A,C,E Line)	4 min drive	1.5 mi
49 St	5 min drive	1.7 mi
50 Street (1,2 Line)	3 min drive	1.4 mi



# Suite 0300

## Tour



# Suite 0300



# Suite 0300



# Floor 6

# Tour



# Floor 6



# Floor 6



# Floor 8

# Tour





# Floor 8



# Floor 8



# Floor 8



# Floor 8

